

Mouse TRAIL ELISA Kit ab253210

リコンビナント SimpleStep ELISA

画像数 5

製品の概要

製品名 Mouse TRAIL ELISA Kit

検出方法 Colorimetric

再現性 Intra-Assay (同時再現性)

サンプル	N	平均値	SD	CV%
Serum	5			4.8%

Inter-Assay (日差再現性)

サンプル	N	平均値	SD	CV%
Serum	3			3.2%

サンプルの種類 Serum, Tissue Extracts, Cell culture media, EDTA Plasma, Cit plasma

アッセイタイプ Sandwich (quantitative)

検出感度 33.79 pg/ml

検出範囲 78.125 pg/ml - 5000 pg/ml

添加回収試験 特定サンプルでの回収試験

サンプルの種類	平均 %	測定範囲
Serum	87	80% - 94%
Tissue Extracts	110	105% - 116%
Cell culture media	114	111% - 119%
EDTA Plasma	87	80% - 101%
Cit plasma	86	84% - 88%

全工程の試験時間 1h 30m

ステップ One step assay

種交差性

交差種: Mouse

製品の概要

Mouse TRAIL ELISA Kit (ab253210) is a single-wash 90 min sandwich ELISA designed for the quantitative measurement of TRAIL protein in cit plasma, edta plasma, serum, tissue extracts, and cell culture media. It uses our proprietary SimpleStep ELISA® technology. Quantitate Mouse TRAIL with 33.79 pg/ml sensitivity.

SimpleStep ELISA® technology employs capture antibodies conjugated to an affinity tag that is recognized by the monoclonal antibody used to coat our SimpleStep ELISA® plates. This approach to sandwich ELISA allows the formation of the antibody-analyte sandwich complex in a single step, significantly reducing assay time. See the SimpleStep ELISA® protocol summary in the image section for further details. Our SimpleStep ELISA® technology provides several benefits:

- Single-wash protocol reduces assay time to 90 minutes or less
- High sensitivity, specificity and reproducibility from superior antibodies
- Fully validated in biological samples
- 96-wells plate breakable into 12 x 8 wells strips

A 384-well SimpleStep ELISA® microplate ([ab203359](#)) is available to use as an alternative to the 96-well microplate provided with SimpleStep ELISA® kits.

特記事項

TRAIL (Tnfsf10) is a type II transmembrane protein that is a cytokine member of the TNFL superfamily. TRAIL activation leads to NFkappaB induction of apoptosis, making it an attractive target as a drug target for cancer. Chemical induction of TRAIL expression in mice was able to induce a partial reduction in the number of cancerous cells.

Abcam has not and does not intend to apply for the REACH Authorisation of customers' uses of products that contain European Authorisation list (Annex XIV) substances.

It is the responsibility of our customers to check the necessity of application of REACH Authorisation, and any other relevant authorisations, for their intended uses.

試験プラットフォーム

Pre-coated microplate (12 x 8 well strips)

製品の特性

保存方法

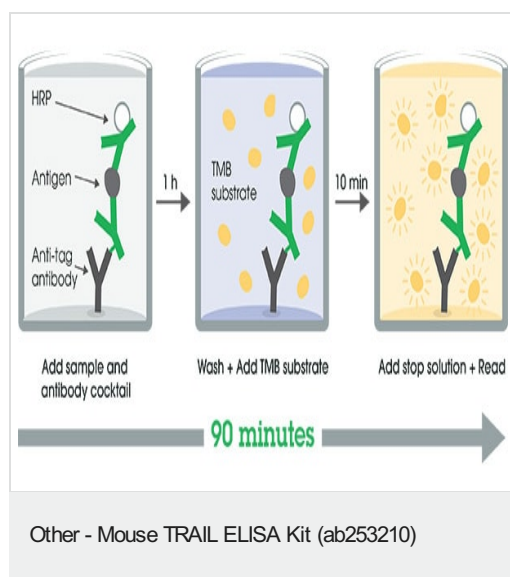
Store at +4°C. Please refer to protocols.

内容	1 x 96 tests
10X Mouse TRAIL Capture Antibody	1 x 600µl
10X Mouse TRAIL Detector Antibody	1 x 600µl
10X Wash Buffer PT (ab206977)	1 x 20ml
5X Cell Extraction Buffer PTR (ab193970)	1 x 10ml
Antibody Diluent 4BI	1 x 6ml
Mouse TRAIL Lyophilized recombinant Protein	2 vials

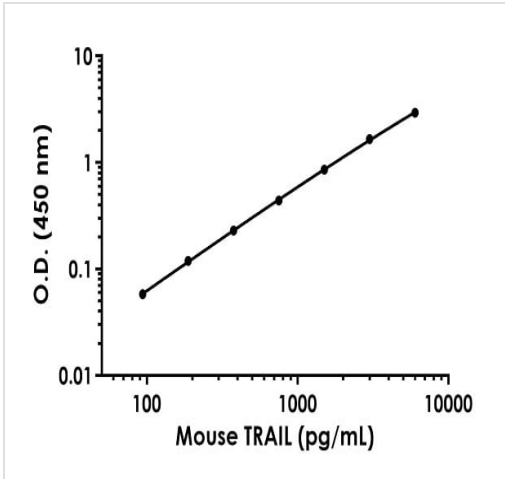
内容	1 x 96 tests
Plate Seals	1 unit
Sample Diluent 50BP	1 x 20ml
Sample Diluent NS (ab193972)	1 x 12ml
SimpleStep Pre-Coated 96-Well Microplate (ab206978)	1 unit
Stop Solution	1 x 12ml
TMB Development Solution	1 x 12ml

機能	Cytokine that binds to TNFRSF10A/TRAILR1, TNFRSF10B/TRAILR2, TNFRSF10C/TRAILR3, TNFRSF10D/TRAILR4 and possibly also to TNFRSF11B/OPG. Induces apoptosis. Its activity may be modulated by binding to the decoy receptors TNFRSF10C/TRAILR3, TNFRSF10D/TRAILR4 and TNFRSF11B/OPG that cannot induce apoptosis.
組織特異性	Widespread; most predominant in spleen, lung and prostate.
配列類似性	Belongs to the tumor necrosis factor family.
細胞内局在	Membrane.

画像

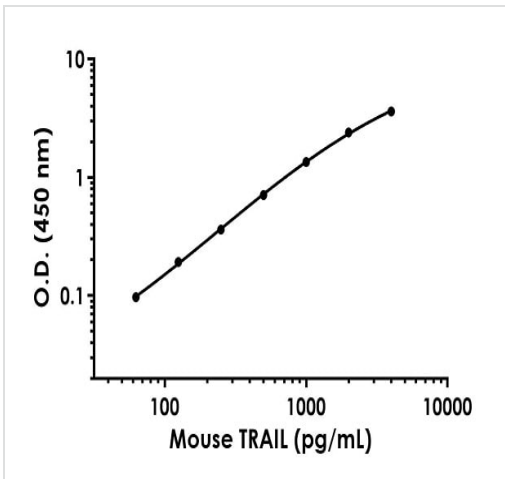


SimpleStep ELISA technology allows the formation of the antibody-antigen complex in one single step, reducing assay time to 90 minutes. Add samples or standards and antibody mix to wells all at once, incubate, wash, and add your final substrate. See protocol for a detailed step-by-step guide.



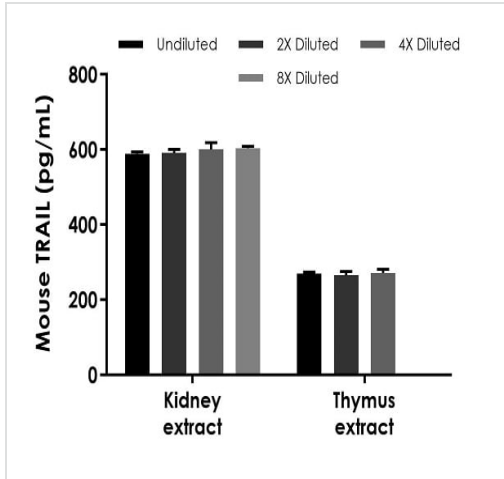
Example of mouse TRAIL standard curve in Sample Diluent 50BP.

The TRAIL standard curve was prepared as described in Section 10. Raw data values are shown in the table. Background-subtracted data values (mean +/- SD) are graphed.



Example of mouse TRAIL standard curve in 1X Cell Extraction Buffer PTR.

The TRAIL standard curve was prepared as described in Section 10. Raw data values are shown in the table. Background-subtracted data values (mean +/- SD) are graphed.



Interpolated concentrations of native TRAIL in mouse kidney and thymus homogenate extract samples based on a 1,000 µg/mL extract load.

The concentrations of TRAIL were measured in duplicate and interpolated from the TRAIL standard curve and corrected for sample dilution. The interpolated dilution factor corrected values are plotted (mean +/- SD, n=2). The mean TRAIL concentration was determined to be 595.83 pg/mL in kidney homogenate extract and 268.83 pg/mL in thymus homogenate extract.

Powered by recombinant antibodies

Research with confidence
Consistent and reproducible results

Long-term and scalable supply
Recombinant technology

Success from the first experiment
Confirmed specificity

Ethical standards compliant
Animal-free production

Sandwich ELISA - Mouse TRAIL ELISA Kit (ab253210)

To learn more about the advantages of recombinant antibodies see [here](#).

Please note: All products are "FOR RESEARCH USE ONLY. NOT FOR USE IN DIAGNOSTIC PROCEDURES"

Our Abpromise to you: Quality guaranteed and expert technical support

- Replacement or refund for products not performing as stated on the datasheet
- Valid for 12 months from date of delivery

- Response to your inquiry within 24 hours
- We provide support in Chinese, English, French, German, Japanese and Spanish
- Extensive multi-media technical resources to help you
- We investigate all quality concerns to ensure our products perform to the highest standards

If the product does not perform as described on this datasheet, we will offer a refund or replacement. For full details of the Abpromise, please visit <https://www.abcam.co.jp/abpromise> or contact our technical team.

Terms and conditions

- Guarantee only valid for products bought direct from Abcam or one of our authorized distributors