

Mouse Tissue Factor ELISA Kit ab214091

リコンビナント SimpleStep ELISA

5 References 画像数 6

製品の概要

製品名 Mouse Tissue Factor ELISA Kit

検出方法 Colorimetric

再現性 Intra-Assay (同時再現性)

サンプル	N	平均値	SD	CV%
Overall	3			3%

Inter-Assay (日差再現性)

サンプル	N	平均値	SD	CV%
Overall	5			3%

サンプルの種類 Cell culture supernatant, Urine, Cell culture extracts, Tissue Extracts

アッセイタイプ Sandwich (quantitative)

検出感度 3.7 pg/ml

検出範囲 25 pg/ml - 1600 pg/ml

添加回収試験 特定サンプルでの回収試験

サンプルの種類	平均 %	測定範囲
Cell culture supernatant	92	87% - 98%
Urine	99	97% - 99%
Cell culture extracts	119	117% - 122%
Mouse brain extract	109	107% - 110%

全工程の試験時間 1h 30m

ステップ One step assay

種交差性 交差種: Mouse

製品の概要

Mouse Tissue Factor ELISA Kit (ab214091) is a single-wash 90 min sandwich ELISA designed for the quantitative measurement of Tissue Factor protein in cell culture extracts, cell culture supernatant, tissue extracts, and urine. It uses our proprietary SimpleStep ELISA® technology. Quantitate Mouse Tissue Factor with 3.7 pg/ml sensitivity.

SimpleStep ELISA® technology employs capture antibodies conjugated to an affinity tag that is recognized by the monoclonal antibody used to coat our SimpleStep ELISA® plates. This approach to sandwich ELISA allows the formation of the antibody-analyte sandwich complex in a single step, significantly reducing assay time. See the SimpleStep ELISA® protocol summary in the image section for further details. Our SimpleStep ELISA® technology provides several benefits:

- Single-wash protocol reduces assay time to 90 minutes or less
- High sensitivity, specificity and reproducibility from superior antibodies
- Fully validated in biological samples
- 96-wells plate breakable into 12 x 8 wells strips

A 384-well SimpleStep ELISA® microplate (**ab203359**) is available to use as an alternative to the 96-well microplate provided with SimpleStep ELISA® kits.

特記事項

Tissue factor plays a role in normal hemostasis by initiating the cell-surface assembly and propagation of the coagulation protease cascade. Tissue Factor initiates blood coagulation by forming a complex with circulating factor VII or VIIa. The tissue factor-VIIa complex activates factors IX or X by specific limited proteolysis.

Abcam has not and does not intend to apply for the REACH Authorisation of customers' uses of products that contain European Authorisation list (Annex XIV) substances.

It is the responsibility of our customers to check the necessity of application of REACH Authorisation, and any other relevant authorisations, for their intended uses.

試験プラットフォーム

Pre-coated microplate (12 x 8 well strips)

製品の特性

保存方法

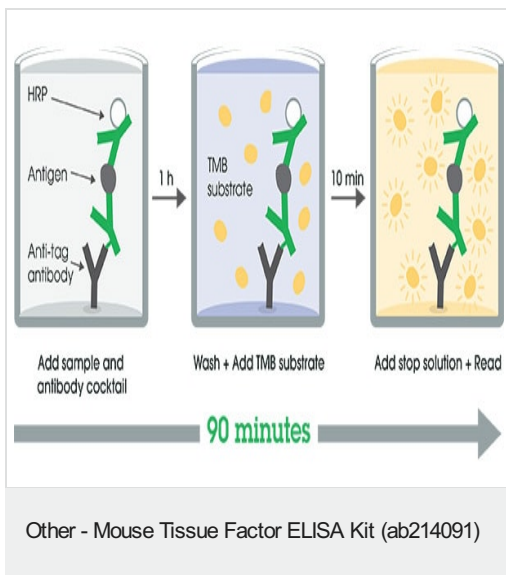
Store at +4°C. Please refer to protocols.

内容	1 x 96 tests
10X Mouse Tissue Factor Detector Antibody	1 x 600µl
10X Wash Buffer PT (ab206977)	1 x 20ml
50X Cell Extraction Enhancer Solution (ab193971)	1 x 1ml
5X Cell Extraction Buffer PTR (ab193970)	1 x 10ml
Antibody Diluent CPR	1 x 6ml
Mouse Tissue Factor Capture Antibody (Lyophilized)	1 vial
Mouse Tissue Factor Lyophilized Recombinant Protein	2 vials

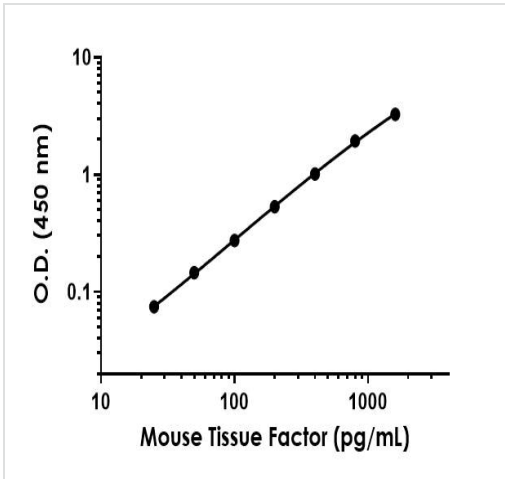
内容	1 x 96 tests
Plate Seals	1 unit
Sample Diluent NS (ab193972)	1 x 50ml
SimpleStep Pre-Coated 96-Well Microplate (ab206978)	1 unit
Stop Solution	1 x 12ml
TMB Development Solution	1 x 12ml

機能	Initiates blood coagulation by forming a complex with circulating factor VII or VIIa. The [TF:VIIa] complex activates factors IX or X by specific limited proteolysis. TF plays a role in normal hemostasis by initiating the cell-surface assembly and propagation of the coagulation protease cascade.
配列類似性	Belongs to the tissue factor family.
細胞内局在	Membrane.

画像

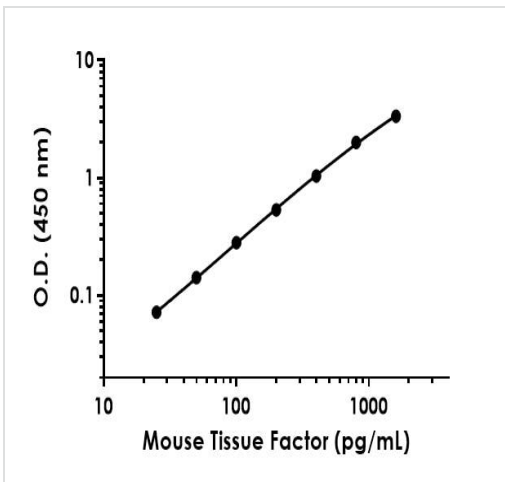


SimpleStep ELISA technology allows the formation of the antibody-antigen complex in one single step, reducing assay time to 90 minutes. Add samples or standards and antibody mix to wells all at once, incubate, wash, and add your final substrate. See protocol for a detailed step-by-step guide.



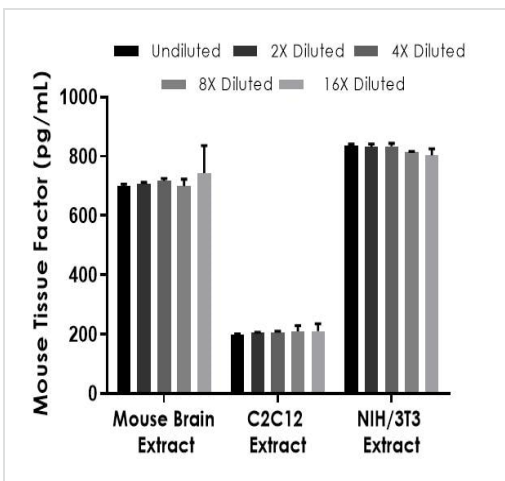
Example of mouse Tissue Factor standard curve in 1X Cell Extraction Buffer PTR.

Background-subtracted data values (mean +/- SD) are graphed.



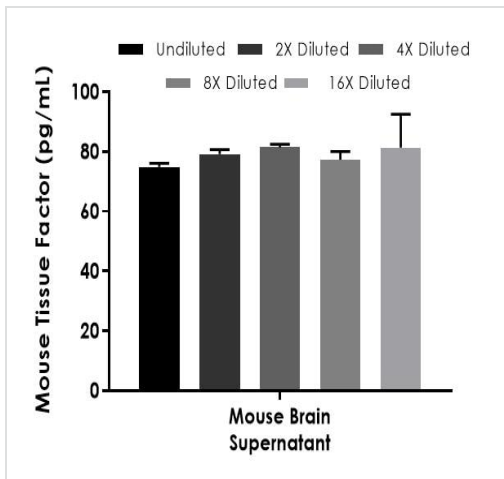
Example of mouse Tissue Factor standard curve Sample Diluent NS.

Background-subtracted data values (mean +/- SD) are graphed.



Interpolated concentrations of native Tissue Factor in mouse cell and tissue extract samples based on a 75 µg/mL extract load.

The concentrations of Tissue Factor were measured in duplicate and interpolated from the Tissue Factor standard curve and corrected for sample dilution. The interpolated dilution factor corrected values are plotted (mean +/- SD, n=2). The mean Tissue Factor concentration was determined to be 713 pg/mL in Mouse Brain Tissue Extract, 206 pg/mL in mouse C2C12 Cell Extract and 824 pg/mL in NIH/3T3 Cell Extract.



Interpolated concentrations of native Tissue Factor in mouse brain cell culture supernatant and mouse urine samples.

The concentrations of Tissue Factor were measured in duplicates, interpolated from the Tissue Factor standard curves and corrected for sample dilution. Undiluted samples are as follows: mouse brain cell culture supernatant 100%, mouse urine 100%. For mouse urine, dilutions beyond 2 fold were not analysed due to O.D. values below the O.D. values of the MDD. The interpolated dilution factor corrected values are plotted (mean +/- SD, n=2). The mean Tissue Factor concentration was determined to be 79 pg/mL in mouse brain cell culture supernatant and 11 pg/mL in mouse urine.

Powered by recombinant antibodies

Research with confidence
Consistent and reproducible results

Long-term and scalable supply
Recombinant technology

Success from the first experiment
Confirmed specificity

Ethical standards compliant
Animal-free production

Sandwich ELISA - Mouse Tissue Factor ELISA Kit (ab214091)

To learn more about the advantages of recombinant antibodies see [here](#).

Please note: All products are "FOR RESEARCH USE ONLY. NOT FOR USE IN DIAGNOSTIC PROCEDURES"

Our Abpromise to you: Quality guaranteed and expert technical support

- Replacement or refund for products not performing as stated on the datasheet
- Valid for 12 months from date of delivery
- Response to your inquiry within 24 hours
- We provide support in Chinese, English, French, German, Japanese and Spanish
- Extensive multi-media technical resources to help you
- We investigate all quality concerns to ensure our products perform to the highest standards

If the product does not perform as described on this datasheet, we will offer a refund or replacement. For full details of the Abpromise,

please visit <https://www.abcam.co.jp/abpromise> or contact our technical team.

Terms and conditions

- Guarantee only valid for products bought direct from Abcam or one of our authorized distributors