

Mouse Thrombin-Antithrombin Complexes ELISA Kit (TAT)
ab137994

16 References 画像数 2

製品の概要

製品名	Mouse Thrombin-Antithrombin Complexes ELISA Kit (TAT)			
検出方法	Colorimetric			
再現性	Intra-Assay (同時再現性)			
	サンプル	N	平均値	SD
	Overall			CV%
				4.1%
	Inter-Assay (日差再現性)			
	サンプル	N	平均値	SD
	Overall			CV%
				9.8%
サンプルの種類	Cell culture supernatant, Plasma			
アッセイタイプ	Sandwich (quantitative)			
検出感度	1.6 pg/ml			
検出範囲	7.8 pg/ml - 125 pg/ml			
添加回収試験	97 %			
全工程の試験時間	5h 00m			
ステップ	Multiple steps standard assay			
種交差性	交差種: Mouse			
製品の概要	TAT Complexes Mouse <i>in vitro</i> ELISA (Enzyme-Linked Immunosorbent Assay) kit is designed for the quantitative measurement of TAT Complexes levels in plasma and cell culture supernatants.			

A TAT Complexes specific antibody has been precoated onto 96-well plates and blocked. Standards or test samples are added to the wells and subsequently a TAT Complexes specific biotinylated detection antibody is added and then followed by washing with wash buffer. Streptavidin-Peroxidase Conjugate is added and unbound conjugates are washed away with wash buffer. TMB is then used to visualize Streptavidin-Peroxidase enzymatic reaction. TMB is catalyzed by Streptavidin-Peroxidase to produce a blue color product that changes into yellow after adding acidic stop solution. The density of yellow coloration is directly proportional to the

amount of TAT Complexes captured in plate.

The entire kit may be stored at -20°C for long term storage before reconstitution - Avoid repeated freeze-thaw cycles.

試験プラットフォーム

Microplate

製品の特性

保存方法

Store at -20°C. Please refer to protocols.

内容	1 x 96 tests
100X Streptavidin-Peroxidase Conjugate	1 x 80µl
10X Diluent M Concentrate	1 x 30ml
20X Wash Buffer Concentrate	2 x 30ml
50X Biotinylated Mouse TAT Complexes Antibody	1 x 120µl
Chromogen Substrate	1 x 7ml
Sealing Tapes	3 units
Stop Solution	1 x 11ml
TAT Complexes Microplate (12 x 8 well strips)	1 unit
TAT Complexes Standard	1 vial

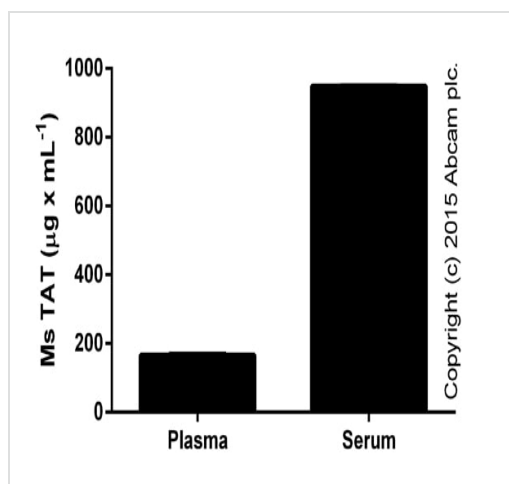
関連性

Thrombin, which cleaves bonds after Arg and Lys, converts fibrinogen to fibrin and activates factors V, VII, VIII, XIII, and, in complex with thrombomodulin, protein C. Functions in blood homeostasis, inflammation and wound healing. Antithrombin: Most important serine protease inhibitor in plasma that regulates the blood coagulation cascade. Antithrombin inhibits thrombin, matriptase-3/TMPRSS7, as well as factors IXa, Xa and XIa. Its inhibitory activity is greatly enhanced in the presence of heparin.

細胞内局在

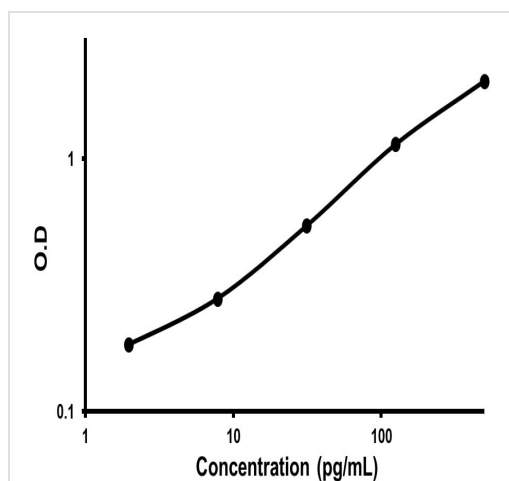
Secreted

画像



Mouse TAT measured in murine biological fluids (diluted 1/256; duplicates +/- SD).

ELISA: ab137994 Thrombin-Antithrombin Complexes (TAT) Mouse ELISA Kit



Representative Standard Curve using ab137994.

Typical Standard Curve

Please note: All products are "FOR RESEARCH USE ONLY. NOT FOR USE IN DIAGNOSTIC PROCEDURES"

Our Abpromise to you: Quality guaranteed and expert technical support

- Replacement or refund for products not performing as stated on the datasheet
- Valid for 12 months from date of delivery
- Response to your inquiry within 24 hours

- We provide support in Chinese, English, French, German, Japanese and Spanish
- Extensive multi-media technical resources to help you
- We investigate all quality concerns to ensure our products perform to the highest standards

If the product does not perform as described on this datasheet, we will offer a refund or replacement. For full details of the Abpromise, please visit <https://www.abcam.co.jp/abpromise> or contact our technical team.

Terms and conditions

- Guarantee only valid for products bought direct from Abcam or one of our authorized distributors