

Mouse Prolactin ELISA Kit ab100736

★★★★★ [1 Abreviews](#) [16 References](#) [画像数 3](#)

製品の概要

製品名	Mouse Prolactin ELISA Kit
検出方法	Colorimetric
サンプルの種類	Cell culture supernatant, Urine, Serum, Plasma
アッセイタイプ	Sandwich (quantitative)
検出感度	< 30 pg/ml
検出範囲	27.43 pg/ml - 20000 pg/ml
添加回収試験	81 %

特定サンプルでの回収試験

サンプルの種類	平均 %	測定範囲
Cell culture supernatant	76.85	68% - 87%
Serum	82.47	73% - 94%
Plasma	76.78	67% - 85%

ステップ Multiple steps standard assay

種交差性 交差種: Mouse

製品の概要 Abcam's Prolactin Mouse ELISA (Enzyme-Linked Immunosorbent Assay) kit is an *in vitro* enzyme-linked immunosorbent assay for the quantitative measurement of mouse Prolactin in serum, plasma and cell culture supernatants.

This assay employs an antibody specific for mouse Prolactin coated on a 96-well plate. Standards and samples are pipetted into the wells and Prolactin present in a sample is bound to the wells by the immobilized antibody. The wells are washed and biotinylated anti-mouse Prolactin antibody is added. After washing away unbound biotinylated antibody, HRP-conjugated streptavidin is pipetted to the wells. The wells are again washed, a TMB substrate solution is added to the wells and color develops in proportion to the amount of Prolactin bound. The Stop Solution changes the color from blue to yellow, and the intensity of the color is measured at 450 nm.

試験プラットフォーム Microplate

製品の特性

保存方法

Store at -20°C. Please refer to protocols.

内容	1 x 96 tests
200X HRP-Streptavidin Concentrate	1 x 200µl
20X Wash Buffer	1 x 25ml
5X Assay Diluent B	1 x 15ml
Assay Diluent A	1 x 30ml
Assay Diluent C	1 x 30ml
Biotinylated anti-Mouse Prolactin	2 vials
Prolactin Microplate (12 x 8 wells)	1 unit
Recombinant Mouse Prolactin Standard (lyophilized)	2 vials
Stop Solution	1 x 8ml
TMB One-Step Substrate Reagent	1 x 12ml

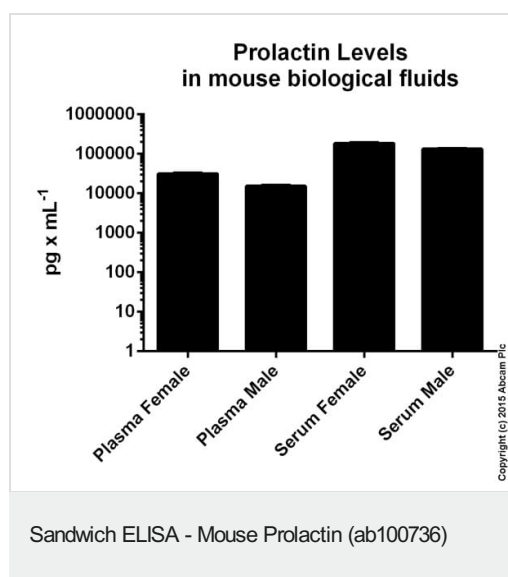
関連性

Various hormones are secreted from the anterior pituitary during development and growth. Prolactin is a growth factor secreted by the anterior pituitary that is necessary for the proliferation and differentiation of the mammary glands. Prolactin acts primarily on the mammary gland by promoting lactation.

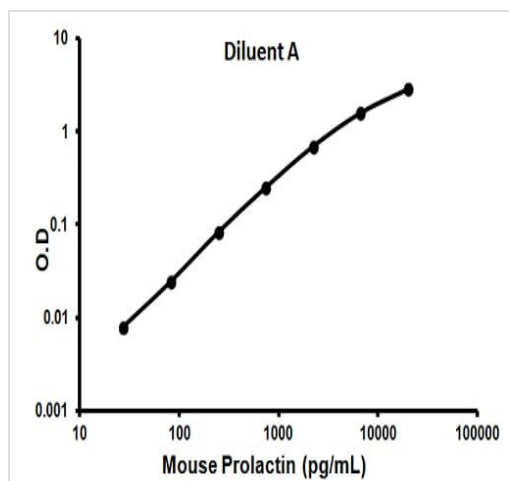
細胞内局在

Secreted

画像

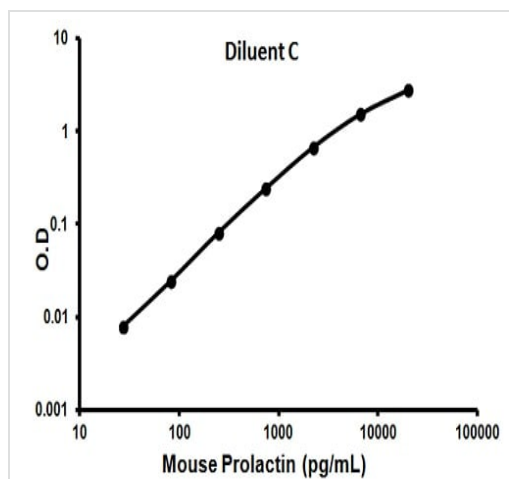


Prolactin measured in mouse biological fluids showing quantity (pg) per mL of tested sample. Samples diluted 10-270 fold.



Representative standard curve using ab100736

Typical standard curve



Representative standard curve using ab100736

Typical standard curve

Please note: All products are "FOR RESEARCH USE ONLY. NOT FOR USE IN DIAGNOSTIC PROCEDURES"

Our Abpromise to you: Quality guaranteed and expert technical support

- Replacement or refund for products not performing as stated on the datasheet
- Valid for 12 months from date of delivery
- Response to your inquiry within 24 hours
- We provide support in Chinese, English, French, German, Japanese and Spanish
- Extensive multi-media technical resources to help you
- We investigate all quality concerns to ensure our products perform to the highest standards

If the product does not perform as described on this datasheet, we will offer a refund or replacement. For full details of the Abpromise, please visit <https://www.abcam.co.jp/abpromise> or contact our technical team.

Terms and conditions

- Guarantee only valid for products bought direct from Abcam or one of our authorized distributors