

Mouse PAI1 ELISA Kit (SERPINE1) ab197752

リコンビナント SimpleStep ELISA

6 References 画像数 9

製品の概要

製品名 Mouse PAI1 ELISA Kit (SERPINE1)

検出方法 Colorimetric

再現性 Intra-Assay (同時再現性)

サンプル	N	平均値	SD	CV%
Serum	5			6.7%

Inter-Assay (日差再現性)

サンプル	N	平均値	SD	CV%
Serum	3			14.2%

サンプルの種類 Cell culture supernatant, Serum, Cit plasma

アッセイタイプ Sandwich (quantitative)

検出感度 200 pg/ml

検出範囲 298 pg/ml - 5000 pg/ml

添加回収試験 特定サンプルでの回収試験

サンプルの種類	平均 %	測定範囲
Serum	109	90% - 121%
Cell culture media	83	72% - 88%
Cit plasma	104	96% - 111%
serum free media	117	104% - 128%

全工程の試験時間 1h 30m

ステップ One step assay

種交差性 交差種: Mouse

製品の概要

Mouse PAI1 ELISA Kit (SERPINE1) (ab197752) is a single-wash 90 min sandwich ELISA designed for the quantitative measurement of PAI1 (SERPINE1) protein in cell culture supernatant, cit plasma, and serum. It uses our proprietary SimpleStep ELISA® technology. Quantitate Mouse PAI1 (SERPINE1) with 200 pg/ml sensitivity.

SimpleStep ELISA® technology employs capture antibodies conjugated to an affinity tag that is recognized by the monoclonal antibody used to coat our SimpleStep ELISA® plates. This approach to sandwich ELISA allows the formation of the antibody-analyte sandwich complex in a single step, significantly reducing assay time. See the SimpleStep ELISA® protocol summary in the image section for further details. Our SimpleStep ELISA® technology provides several benefits:

- Single-wash protocol reduces assay time to 90 minutes or less
- High sensitivity, specificity and reproducibility from superior antibodies
- Fully validated in biological samples
- 96-wells plate breakable into 12 x 8 wells strips

A 384-well SimpleStep ELISA® microplate (**ab203359**) is available to use as an alternative to the 96-well microplate provided with SimpleStep ELISA® kits.

特記事項

Plasminogen activator inhibitor-1 (PAI1 or Serpin E1) is encoded by the Serpine1 gene. PAI1 is a serine protease inhibitor with a major role in the regulation of fibrinolysis. PAI1 is the principal inhibitor of tissue plasminogen activator (tPA) and urokinase (uPA), both of which are activators of plasminogen. PAI1 is a secreted protein produced by the endothelium as well as adipose tissue.

試験プラットフォーム

Microplate (12 x 8 well strips)

製品の特性

保存方法

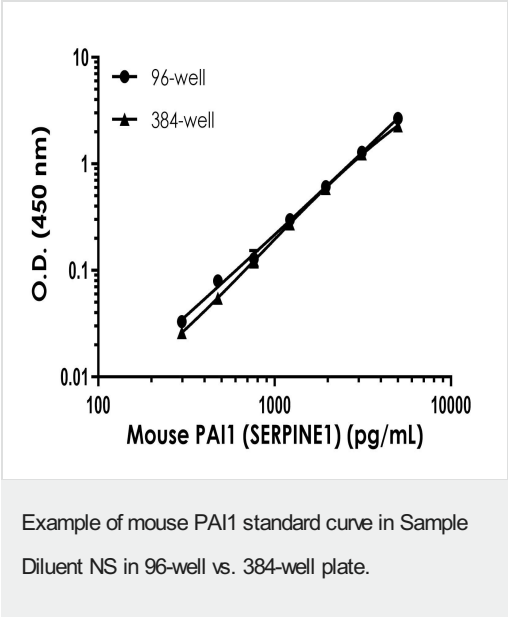
Store at +4°C. Please refer to protocols.

内容	1 x 96 tests	1 x 384 tests	1 x 96 tests
10X Mouse PAI1 Capture Antibody	1 x 600µl	1 x 600µl	1 x 600µl
10X Mouse PAI1 Detector Antibody	1 x 600µl	1 x 600µl	1 x 600µl
10X Wash Buffer PT (ab206977)	1 x 20ml	1 x 20ml	1 x 20ml
384 well CaptSure™ microplates	0 x 0 unit	1 unit	0 x 0 unit
Antibody Diluent CPI2	1 x 6ml	1 x 6ml	1 x 6ml
Mouse PAI1 Lyophilized Recombinant Protein (ab93068)	2 vials	2 vials	2 vials
Plate Seals	1 unit	1 unit	1 unit
Sample Diluent NS (ab193972)	1 x 50ml	1 x 250ml	1 x 50ml
SimpleStep Pre-Coated 96-Well Microplate (ab206978)	1 unit	0 x 0 unit	1 unit

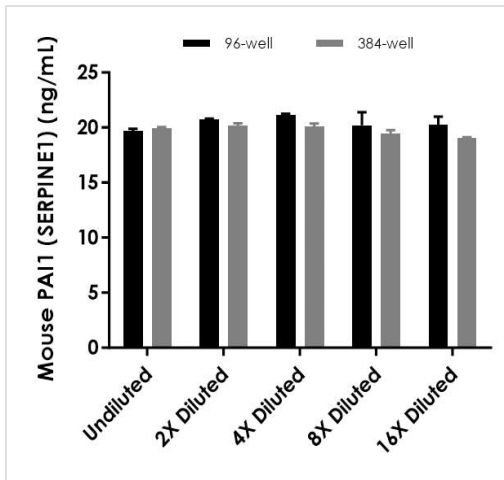
内容	1 x 96 tests	1 x 384 tests	1 x 96 tests
Stop Solution	1 x 12ml	2 x 12ml	1 x 12ml
TMB Development Solution	1 x 12ml	2 x 12ml	1 x 12ml

機能	This inhibitor acts as 'bait' for tissue plasminogen activator, urokinase, and protein C. Its rapid interaction with TPA may function as a major control point in the regulation of fibrinolysis.
組織特異性	Found in plasma and platelets and in endothelial, hepatoma and fibrosarcoma cells.
関連疾患	Defects in SERPINE1 are the cause of plasminogen activator inhibitor-1 deficiency (PAI-1D) [MIM:613329]. It is a hematologic disorder characterized by increased bleeding after trauma, injury, or surgery. Affected females have menorrhagia. The bleeding defect is due to increased fibrinolysis of fibrin blood clots due to deficiency of plasminogen activator inhibitor-1, which inhibits tissue and urinary activators of plasminogen. Note=High concentrations of SERPINE1 seem to contribute to the development of venous but not arterial occlusions.
配列類似性	Belongs to the serpin family.
翻訳後修飾	Inactivated by proteolytic attack of the urokinase-type (u-PA) and the tissue-type (TPA), cleaving the 369-Arg- -Met-370 bond.
細胞内局在	Secreted.

画像

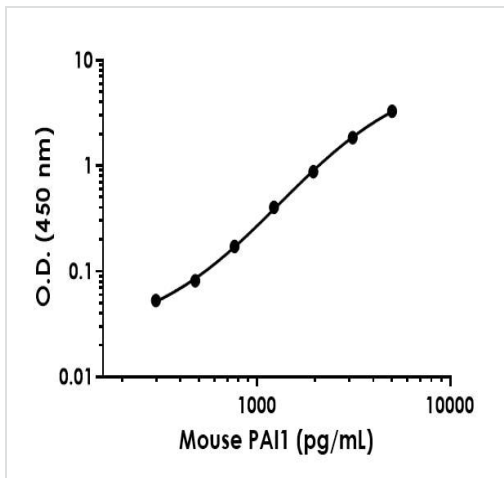


Example of mouse PAI1 standard curve in 96-well vs. 384-well plate. Background-subtracted data values (mean +/- SD) are graphed.



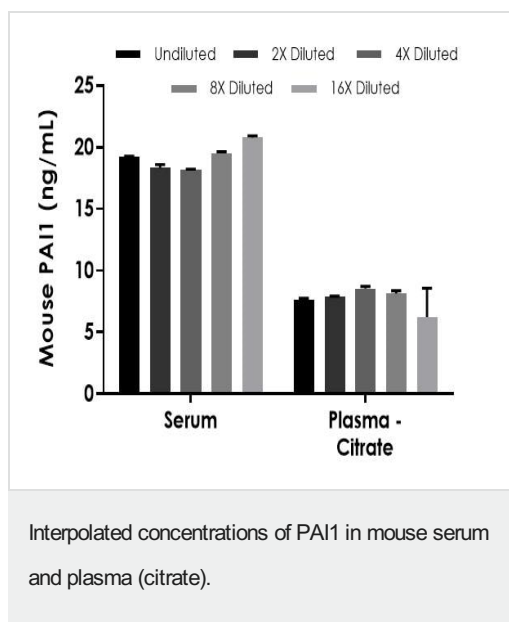
Interpolated concentrations of mouse PAI1 in serum in 96-well vs. 384-well plates.

Interpolated concentration of native PAI1 was measured in duplicate at different sample concentrations in 96-well vs. 384-well plates. Undiluted samples are 25% serum. The interpolated dilution factor corrected values are plotted (mean \pm SD, $n=2$). Sample dilutions are made in Sample Diluent NS.

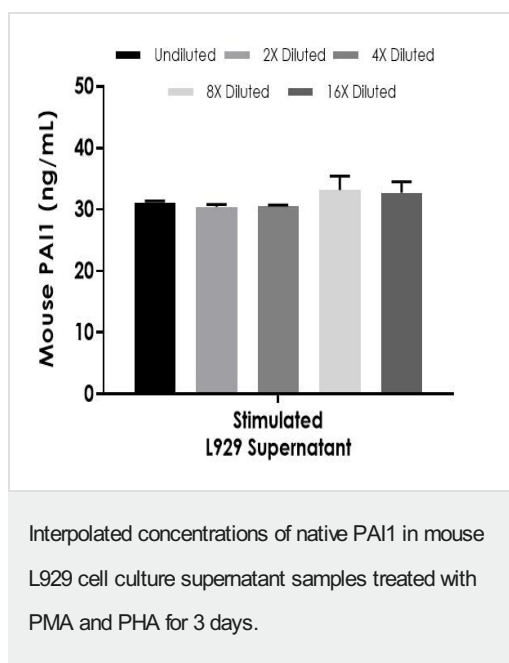


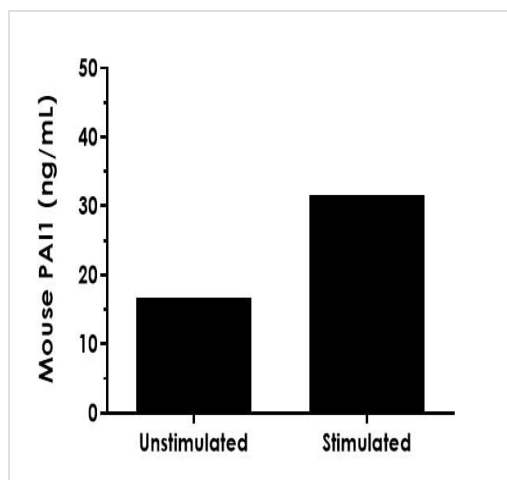
Example of PAI1 standard curve.

Background-subtracted data values (mean \pm SD) are graphed.



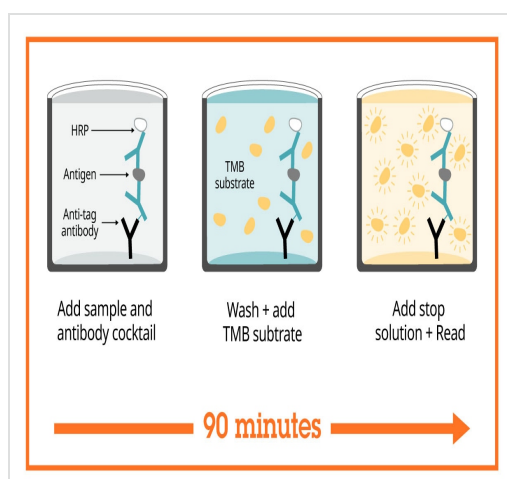
The concentrations of PAI1 were measured in duplicate and interpolated from the PAI1 standard curve and corrected for sample dilution. The interpolated dilution factor corrected values are plotted (mean \pm SD, n=2). The mean PAI1 concentration was determined to be 18.98 ng/mL in mouse serum and 7.69 ng/mL in mouse plasma (citrate).





Comparison of secreted PAI1 in unstimulated and PMA/PHA-stimulated L929 Cells.

L929 cells were grown in the absence (unstimulated) or presence of Phorbol Myristate Acetate (PMA) and phytohemagglutinin (PHA) (stimulated) for 3 days. PAI1 was measured in 10-fold diluted cell culture supernatants of unstimulated and PMA/PHA stimulated L929 and cell culture media. Measured values were interpolated from the PAI1 Standard Curve diluted in Sample Diluent NS and corrected for dilution factor. Mean of duplicate values \pm SD are graphed: 17.9 ng/mL unstimulated, 31.1 ng/mL stimulated, and undetectable in media.



Sandwich ELISA - Mouse PAI1 ELISA Kit
(SERPINE1) (ab197752)

SimpleStep ELISA technology allows the formation of the antibody-antigen complex in one single step, reducing assay time to 90 minutes. Add samples or standards and antibody mix to wells all at once, incubate, wash, and add your final substrate. See protocol for a detailed step-by-step guide.

Powered by
recombinant antibodies



Research with confidence
Consistent and reproducible results



Long-term and scalable supply
Recombinant technology



Success from the first experiment
Confirmed specificity



Ethical standards compliant
Animal-free production

Sandwich ELISA - Mouse PAI1 ELISA Kit
(SERPINE1) (ab197752)

To learn more about the advantages of recombinant antibodies see [here](#).

**Get more done with
SimpleStep ELISA**



Easy to use
Single-wash 90-minute protocol



Flexible
Matched antibody pairs available



Precision antibodies
High sensitivity, specificity and reproducibility



Scalable
Now in 10-pack and 384-well formats

Sandwich ELISA - Mouse PAI1 ELISA Kit
(SERPINE1) (ab197752)

To learn more about the advantages of SimpleStep ELISA® kits see [here](#).

Please note: All products are "FOR RESEARCH USE ONLY. NOT FOR USE IN DIAGNOSTIC PROCEDURES"

Our Abpromise to you: Quality guaranteed and expert technical support

- Replacement or refund for products not performing as stated on the datasheet
- Valid for 12 months from date of delivery
- Response to your inquiry within 24 hours
- We provide support in Chinese, English, French, German, Japanese and Spanish
- Extensive multi-media technical resources to help you
- We investigate all quality concerns to ensure our products perform to the highest standards

If the product does not perform as described on this datasheet, we will offer a refund or replacement. For full details of the Abpromise, please visit <https://www.abcam.co.jp/abpromise> or contact our technical team.

Terms and conditions

- Guarantee only valid for products bought direct from Abcam or one of our authorized distributors