

Mouse P-Selectin ELISA Kit (CD62P) ab200014

リコンビナント SimpleStep ELISA

1 References [画像数 8](#)

製品の概要

製品名 Mouse P-Selectin ELISA Kit (CD62P)

検出方法 Colorimetric

再現性 Intra-Assay (同時再現性)

サンプル	N	平均値	SD	CV%
Serum	8			5.6%

Inter-Assay (日差再現性)

サンプル	N	平均値	SD	CV%
Serum	3			3.21%

サンプルの種類 Cell culture supernatant, Serum, Cell culture extracts, Cit plasma

アッセイタイプ Sandwich (quantitative)

検出感度 4.16 pg/ml

検出範囲 23.4 pg/ml - 1500 pg/ml

添加回収試験 特定サンプルでの回収試験

サンプルの種類	平均 %	測定範囲
Serum	112	107% - 116%
Cell culture media	119	118% - 120%
Hep Plasma	127	119% - 139%
EDTA Plasma	122	119% - 126%
Cit plasma	114	103% - 120%

全工程の試験時間 1h 30m

ステップ One step assay

種交差性

交差種: Mouse

非交差種: Goat, Cow, Pig

製品の概要

Mouse P-Selectin ELISA Kit (CD62P) (ab200014) is a single-wash 90 min sandwich ELISA designed for the quantitative measurement of P-Selectin (CD62P) protein in cit plasma, serum, cell culture supernatant, and cell culture extracts. It uses our proprietary SimpleStep ELISA® technology. Quantitate Mouse P-Selectin (CD62P) with 4.16 pg/ml sensitivity.

SimpleStep ELISA® technology employs capture antibodies conjugated to an affinity tag that is recognized by the monoclonal antibody used to coat our SimpleStep ELISA® plates. This approach to sandwich ELISA allows the formation of the antibody-analyte sandwich complex in a single step, significantly reducing assay time. See the SimpleStep ELISA® protocol summary in the image section for further details. Our SimpleStep ELISA® technology provides several benefits:

- Single-wash protocol reduces assay time to 90 minutes or less
- High sensitivity, specificity and reproducibility from superior antibodies
- Fully validated in biological samples
- 96-wells plate breakable into 12 x 8 wells strips

A 384-well SimpleStep ELISA® microplate (**ab203359**) is available to use as an alternative to the 96-well microplate provided with SimpleStep ELISA® kits.

特記事項

P-Selectin is the largest member of the selectin family, which are adhesion molecules that ensure efficient recruitment of leukocytes to inflammation sites. It is stored in platelets and endothelial cells in Weibel-Palade bodies and α -granules, and is expressed by membrane translocation. P-Selectin's main function is to mediate the interaction of activated endothelial cells or platelets with leukocytes, and most importantly, leukocyte rolling after trauma. High soluble levels of P-Selectin are thought to be predictive of future cardiovascular events.

Abcam has not and does not intend to apply for the REACH Authorisation of customers' uses of products that contain European Authorisation list (Annex XIV) substances.

It is the responsibility of our customers to check the necessity of application of REACH Authorisation, and any other relevant authorisations, for their intended uses.

試験プラットフォーム

Microplate (12 x 8 well strips)

製品の特性

保存方法

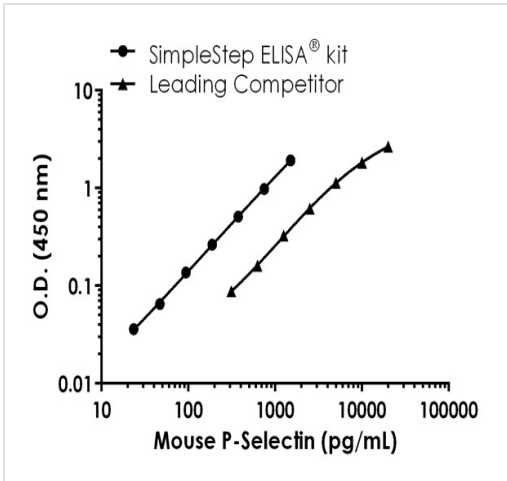
Store at +4°C. Please refer to protocols.

内容	1 x 96 tests
10X Mouse P-Selectin Capture Antibody	1 x 600µl
10X Mouse P-Selectin Detector Antibody	1 x 600µl
10X Wash Buffer PT (ab206977)	1 x 20ml
50X Cell Extraction Enhancer Solution (ab193971)	1 x 1ml
5X Cell Extraction Buffer PTR (ab193970)	1 x 10ml

内容	1 x 96 tests
Antibody Diluent CP	1 x 6ml
Mouse P-Selectin Lyophilized Recombinant Protein	2 vials
Plate Seals	1 unit
Sample Diluent NS (ab193972)	1 x 50ml
SimpleStep Pre-Coated 96-Well Microplate (ab206978)	1 unit
Stop Solution	1 x 12ml
TMB Development Solution	1 x 12ml

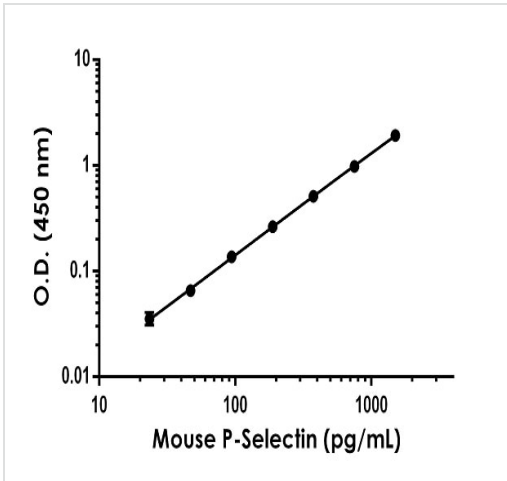
機能	Ca(2+)-dependent receptor for myeloid cells that binds to carbohydrates on neutrophils and monocytes. Mediates the interaction of activated endothelial cells or platelets with leukocytes. The ligand recognized is sialyl-Lewis X. Mediates rapid rolling of leukocyte rolling over vascular surfaces during the initial steps in inflammation through interaction with PSGL1.
組織特異性	Stored in the alpha-granules of platelets and Weibel-Palade bodies of endothelial cells. Upon cell activation by agonists, P-selectin is transported rapidly to the cell surface.
関連疾患	Defects in SELP may be a cause of susceptibility to ischemic stroke (ISCHSTR) [MIM:601367]; also known as cerebrovascular accident or cerebral infarction. A stroke is an acute neurologic event leading to death of neural tissue of the brain and resulting in loss of motor, sensory and/or cognitive function. Ischemic strokes, resulting from vascular occlusion, is considered to be a highly complex disease consisting of a group of heterogeneous disorders with multiple genetic and environmental risk factors.
配列類似性	Belongs to the selectin/LECAM family. Contains 1 C-type lectin domain. Contains 1 EGF-like domain. Contains 9 Sushi (CCP/SCR) domains.
細胞内局在	Membrane.

画像



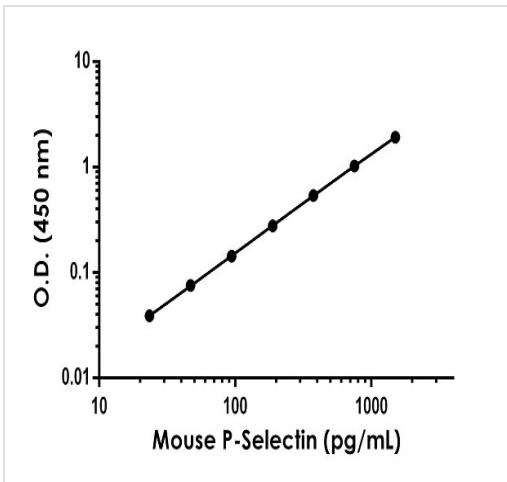
Standard curve comparison between mouse P-Selectin (CD62P) SimpleStep ELISA[®] kit and traditional ELISA kit from leading competitor. SimpleStep ELISA kit shows a 4-fold increase in sensitivity.

Mouse P-Selectin (CD62P) standard curve comparison data.



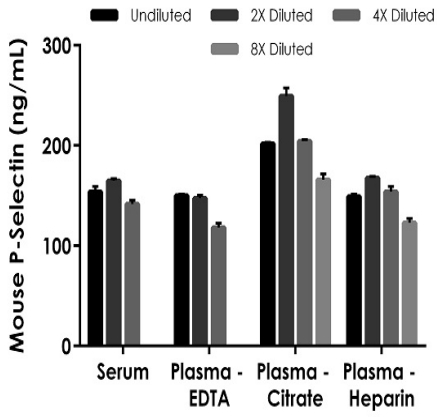
Background-subtracted data values (mean +/- SD) are graphed.

Example of P-Selectin standard curve in Sample Diluent NS.



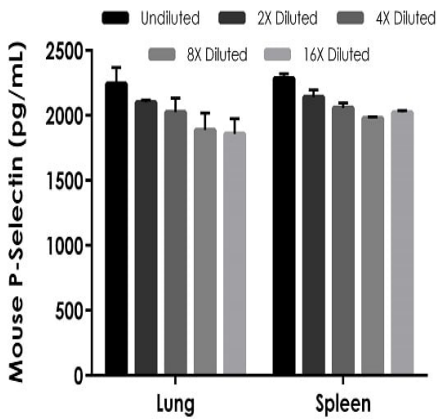
Background-subtracted data values (mean +/- SD) are graphed.

Example of P-Selectin standard curve in 1X Cell Extraction Buffer PTR.



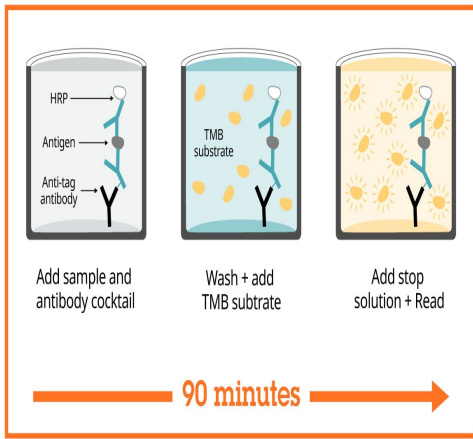
Titration of mouse serum, EDTA platelet poor plasma, citrate plasma, and heparin plasma within the working range of the assay.

The 1X dilution for serum and each plasma was at 2% matrix. The interpolated P-selectin concentrations multiplied by the total dilution factor are shown for each matrix (mean +/- SD, n = 2).



Titration of lung and spleen extracts in 1X Cell Extraction Buffer PTR within the working range of the assay.

The 1X dilution for the lung extracts was 500 µg/mL, and for the spleen extracts 125 µg/mL. The interpolated P-Selectin concentrations multiplied by the total dilution factor are shown for each supernatant (mean +/- SD, n = 2).



Sandwich ELISA - Mouse P-Selectin ELISA Kit
(CD62P) (ab200014)

SimpleStep ELISA technology allows the formation of the antibody-antigen complex in one single step, reducing assay time to 90 minutes. Add samples or standards and antibody mix to wells all at once, incubate, wash, and add your final substrate. See protocol for a detailed step-by-step guide.

Powered by
recombinant antibodies

- Research with confidence**
Consistent and reproducible results
- Long-term and scalable supply**
Recombinant technology
- Success from the first experiment**
Confirmed specificity
- Ethical standards compliant**
Animal-free production

Sandwich ELISA - Mouse P-Selectin ELISA Kit
(CD62P) (ab200014)

To learn more about the advantages of recombinant antibodies see [here](#).

Get more done with
SimpleStep ELISA

- Easy to use**
Single-wash 90-minute protocol
- Flexible**
Matched antibody pairs available
- Precision antibodies**
High sensitivity, specificity and reproducibility
- Scalable**
Now in 10-pack and 384-well formats

Sandwich ELISA - Mouse P-Selectin ELISA Kit
(CD62P) (ab200014)

To learn more about the advantages of SimpleStep ELISA[®] kits see [here](#).

Please note: All products are "FOR RESEARCH USE ONLY. NOT FOR USE IN DIAGNOSTIC PROCEDURES"

Our Abpromise to you: Quality guaranteed and expert technical support

- Replacement or refund for products not performing as stated on the datasheet
- Valid for 12 months from date of delivery
- Response to your inquiry within 24 hours

- We provide support in Chinese, English, French, German, Japanese and Spanish
- Extensive multi-media technical resources to help you
- We investigate all quality concerns to ensure our products perform to the highest standards

If the product does not perform as described on this datasheet, we will offer a refund or replacement. For full details of the Abpromise, please visit <https://www.abcam.co.jp/abpromise> or contact our technical team.

Terms and conditions

- Guarantee only valid for products bought direct from Abcam or one of our authorized distributors