



Product datasheet

Mouse MIP-1 gamma ELISA Kit (CCL9) ab155449

1 References 画像数 2

製品の概要

製品名 Mouse MIP-1 gamma ELISA Kit (CCL9)

検出方法 Colorimetric

再現性 Intra-Assay (同時再現性)

サンプル	N	平均値	SD	CV%
Overall				< 10%

Inter-Assay (日差再現性)

サンプル	N	平均値	SD	CV%
Overall				< 10%

サンプルの種類 Cell culture supernatant, Serum, Plasma

アッセイタイプ Sandwich (quantitative)

検出感度 < 1 pg/ml

検出範囲 1 pg/ml - 250 pg/ml

添加回収試験 特定サンプルでの回収試験

サンプルの種類	平均 %	測定範囲
Serum	= 83.5	75% - 91%
Plasma	= 90.1	81% - 101%
Cell culture media	= 99.02	95% - 103%

ステップ Multiple steps standard assay

種交差性 交差種: Mouse

製品の概要 Abcam's MIP-1 (CCL9) gamma Mouse ELISA (Enzyme-Linked Immunosorbent Assay) kit is an *in vitro* enzyme-linked immunosorbent assay designed for the quantitative measurement of mouse MIP-1 gamma in serum, plasma and cell culture supernatants.

This assay employs an antibody specific for mouse MIP-1 (CCL9 gamma coated on a 96-well plate. Standards and samples are pipetted into the wells and MIP-1 gamma present in a sample

is bound to the wells by the immobilized antibody. The wells are washed and biotinylated anti-mouse MIP-1 gamma antibody is added. After washing away unbound biotinylated antibody, HRP-conjugated streptavidin is pipetted to the wells. The wells are again washed, a TMB substrate solution is added to the wells and color develops in proportion to the amount of MIP-1 gamma bound. The Stop Solution changes the color from blue to yellow, and the intensity of the color is measured at 450 nm.

試験プラットフォーム

Microplate

製品の特性

保存方法

Store at -20°C. Please refer to protocols.

内容	1 x 96 tests
200X HRP-Streptavidin Concentrate	1 x 200µl
20X Wash Buffer	1 x 25ml
5X Assay Diluent B	1 x 15ml
Assay Diluent A	1 x 30ml
Biotinylated anti-mouse MIP-1 gamma	2 vials
MIP-1 gamma Microplate (12 x 8 wells)	1 unit
Recombinant Mouse MIP-1 gamma Standard (lyophilized)	2 vials
Stop Solution	1 x 8ml
TMB One-Step Substrate Reagent	1 x 12ml

機能

Monokine with inflammatory, pyrogenic and chemokinetic properties. Circulates at high concentrations in the blood of healthy animals. Binding to a high-affinity receptor activates calcium release in neutrophils. It also inhibits colony formation of bone marrow myeloid immature progenitors.

組織特異性

Expressed mainly in the liver, lung, and the thymus, although some expression has been detected in a wide variety of tissues except brain.

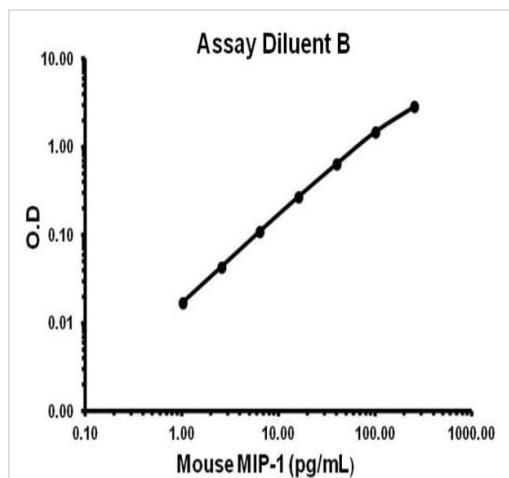
配列類似性

Belongs to the intercrine beta (chemokine CC) family.

細胞内局在

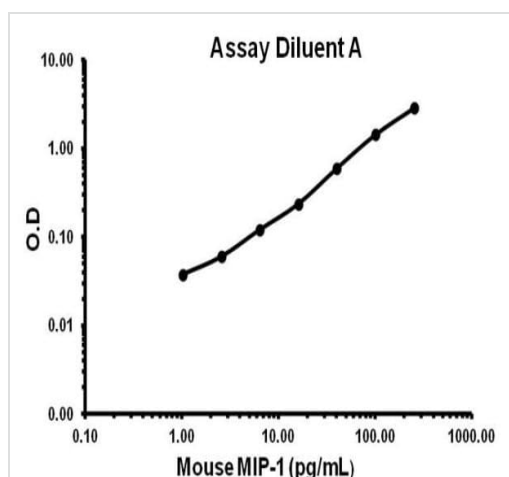
Secreted.

画像



Representative standard curve using ab155449 - Assay Diluent B.

Typical Standard Curve



Representative standard curve using ab155449 - Assay Diluent A.

Typical Standard Curve

Please note: All products are "FOR RESEARCH USE ONLY. NOT FOR USE IN DIAGNOSTIC PROCEDURES"

Our Abpromise to you: Quality guaranteed and expert technical support

- Replacement or refund for products not performing as stated on the datasheet
- Valid for 12 months from date of delivery
- Response to your inquiry within 24 hours
- We provide support in Chinese, English, French, German, Japanese and Spanish
- Extensive multi-media technical resources to help you
- We investigate all quality concerns to ensure our products perform to the highest standards

If the product does not perform as described on this datasheet, we will offer a refund or replacement. For full details of the Abpromise, please visit <https://www.abcam.co.jp/abpromise> or contact our technical team.

Terms and conditions

- Guarantee only valid for products bought direct from Abcam or one of our authorized distributors