

Mouse MCP1 ELISA Kit ab208979

リコンビナント SimpleStep ELISA

★★★★★ 2 Abreviews 14 References 画像数 6

製品の概要

製品名	Mouse MCP1 ELISA Kit
検出方法	Colorimetric
再現性	Intra-Assay (同時再現性)

サンプル	N	平均値	SD	CV%
Mouse serum	8			4.4%

サンプル	N	平均値	SD	CV%
Mouse serum	3			9.9%

サンプルの種類	Cell culture supernatant, Serum, EDTA Plasma, Cit plasma
アッセイタイプ	Sandwich (quantitative)
検出感度	0.487 pg/ml
検出範囲	1.56 pg/ml - 100 pg/ml
添加回収試験	特定サンプルでの回収試験

サンプルの種類	平均 %	測定範囲
Cell culture supernatant	98	91% - 107%
Serum	105	101% - 112%
Hep Plasma	105	103% - 108%
EDTA Plasma	106	104% - 110%
Cit plasma	104	100% - 111%

全工程の試験時間	1h 30m
ステップ	One step assay

種交差性

交差種: Mouse

非交差種: Goat, Cow, Pig

製品の概要

Mouse MCP1 ELISA Kit (ab208979) is a single-wash 90 min sandwich ELISA designed for the quantitative measurement of MCP1 protein in cell culture supernatant, cit plasma, edta plasma, hep plasma, and serum. It uses our proprietary SimpleStep ELISA® technology. Quantitate Mouse MCP1 with 0.487 pg/ml sensitivity.

SimpleStep ELISA® technology employs capture antibodies conjugated to an affinity tag that is recognized by the monoclonal antibody used to coat our SimpleStep ELISA® plates. This approach to sandwich ELISA allows the formation of the antibody-analyte sandwich complex in a single step, significantly reducing assay time. See the SimpleStep ELISA® protocol summary in the image section for further details. Our SimpleStep ELISA® technology provides several benefits:

- Single-wash protocol reduces assay time to 90 minutes or less
- High sensitivity, specificity and reproducibility from superior antibodies
- Fully validated in biological samples
- 96-wells plate breakable into 12 x 8 wells strips

A 384-well SimpleStep ELISA® microplate (**ab203359**) is available to use as an alternative to the 96-well microplate provided with SimpleStep ELISA® kits.

特記事項

MCP1 (CCL2) is a chemokine expressed by fibroblasts, macrophages, endothelial cells, mast cells, osteoblasts, ameloblasts, epithelial cells, and astrocytes after stimulation with inflammatory stimuli. MCP1 is involved in the recruitment of monocytes and lymphocytes and in the regulation of Th1/Th2 lymphocyte differentiation.

The standard is affinity purified.

試験プラットフォーム

Microplate (12 x 8 well strips)

製品の特性

保存方法

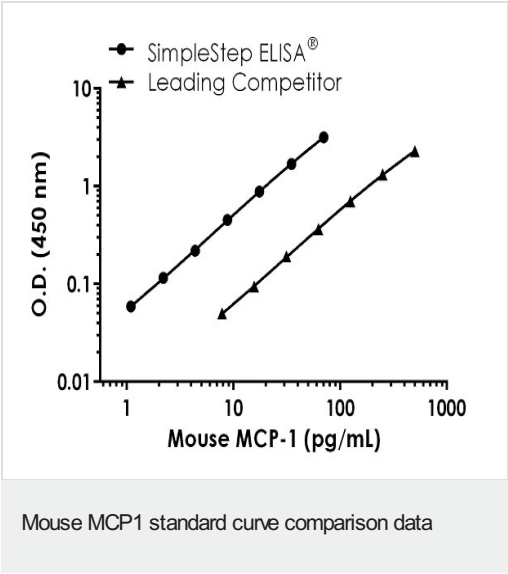
Store at +4°C. Please refer to protocols.

内容	1 x 96 tests	10 x 96 tests	1 x 384 tests
10X Mouse MCP1 Capture Antibody	1 x 600µl	1 x 6000µl	1 x 600µl
10X Mouse MCP1 Detector Antibody	1 x 600µl	1 x 6000µl	1 x 600µl
10X Wash Buffer PT (ab206977)	1 x 20ml	1 x 200ml	1 x 20ml
384 well CaptSure™ microplates	0 x 0 unit	0 x 0 unit	1 unit
Antibody Diluent 5BI	1 x 6ml	10 x 6ml	1 x 6ml
Mouse MCP1 Lyophilized Recombinant Protein (ab9901)	2 vials	10 vials	2 vials
Plate Seals	1 unit	10 units	1 unit

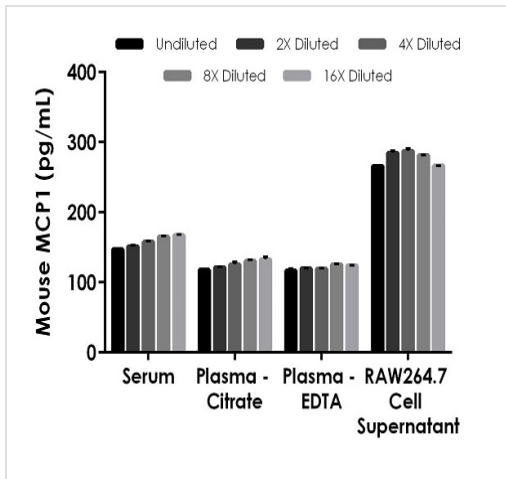
内容	1 x 96 tests	10 x 96 tests	1 x 384 tests
Sample Diluent NS (ab193972)	1 x 50ml	2 x 250ml	1 x 250ml
SimpleStep Pre-Coated 96-Well Microplate (ab206978)	1 unit	1 x 10 units	0 x 0 unit
Stop Solution	1 x 12ml	1 x 120ml	2 x 12ml
TMB Development Solution	1 x 12ml	1 x 120ml	2 x 12ml

機能	Chemotactic factor that attracts monocytes and basophils but not neutrophils or eosinophils. Augments monocyte anti-tumor activity. Has been implicated in the pathogenesis of diseases characterized by monocytic infiltrates, like psoriasis, rheumatoid arthritis or atherosclerosis. May be involved in the recruitment of monocytes into the arterial wall during the disease process of atherosclerosis.
配列類似性	Belongs to the intercrine beta (chemokine CC) family.
翻訳後修飾	Processing at the N-terminus can regulate receptor and target cell selectivity. Deletion of the N-terminal residue converts it from an activator of basophil to an eosinophil chemoattractant.
細胞内局在	Secreted.

画像

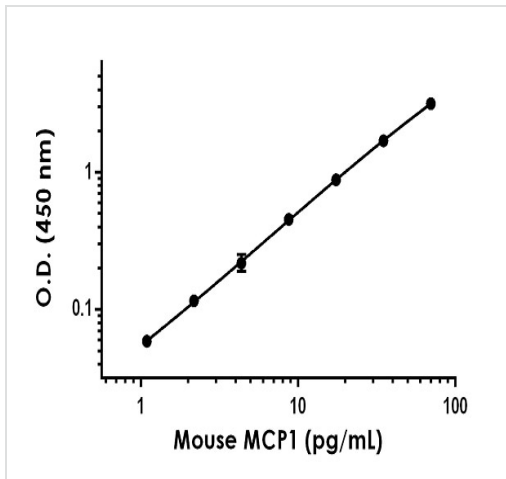


Standard curve comparison between mouse MCP1 SimpleStep ELISA[®] kit and traditional ELISA kit from leading competitor. SimpleStep ELISA kit shows a 3-fold increase in sensitivity.



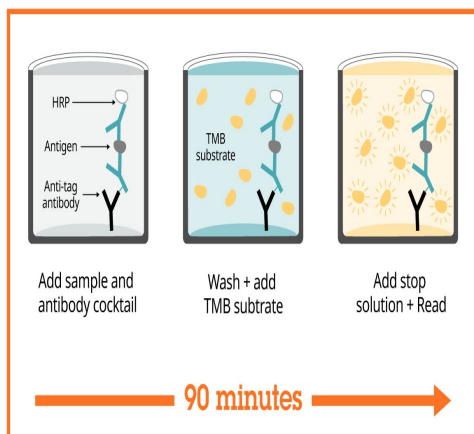
Interpolated concentrations of native MCP1 in mouse serum, plasma and cell culture supernatant samples.

The concentrations of MCP1 were measured in duplicates, interpolated from the MCP1 standard curves and corrected for sample dilution. Undiluted samples are as follows: serum 25%, plasma (citrate) 25%, plasma (EDTA) 25%, and RAW264.7 cell culture supernatant 10%. The interpolated dilution factor corrected values are plotted (mean \pm SD, $n=2$). The mean MCP1 concentration was determined to be 157.7 pg/mL in serum, 125.7 pg/mL in plasma (citrate), 121.1 pg/mL in plasma (EDTA), and 277.2 pg/mL in RAW264.7 cell culture supernatant.



Example of mouse MCP1 standard curve in Sample Diluent NS.

Background-subtracted data values (mean \pm SD) are graphed.



Sandwich ELISA - Mouse MCP1 ELISA Kit
(ab208979)

SimpleStep ELISA technology allows the formation of the antibody-antigen complex in one single step, reducing assay time to 90 minutes. Add samples or standards and antibody mix to wells all at once, incubate, wash, and add your final substrate. See protocol for a detailed step-by-step guide.

Powered by
recombinant antibodies



Research with confidence
Consistent and reproducible results



Long-term and scalable supply
Recombinant technology



Success from the first experiment
Confirmed specificity



Ethical standards compliant
Animal-free production

Sandwich ELISA - Mouse MCP1 ELISA Kit
(ab208979)

To learn more about the advantages of recombinant antibodies see [here](#).

**Get more done with
SimpleStep ELISA**



Easy to use
Single-wash 90-minute
protocol



Flexible
Matched antibody pairs
available



Precision antibodies
High sensitivity, specificity
and reproducibility



Scalable
Now in 10-pack and
384-well formats

Sandwich ELISA - Mouse MCP1 ELISA Kit
(ab208979)

To learn more about the advantages of SimpleStep ELISA® kits
see [here](#).

Please note: All products are "FOR RESEARCH USE ONLY. NOT FOR USE IN DIAGNOSTIC PROCEDURES"

Our Abpromise to you: Quality guaranteed and expert technical support

- Replacement or refund for products not performing as stated on the datasheet
- Valid for 12 months from date of delivery
- Response to your inquiry within 24 hours
- We provide support in Chinese, English, French, German, Japanese and Spanish
- Extensive multi-media technical resources to help you
- We investigate all quality concerns to ensure our products perform to the highest standards

If the product does not perform as described on this datasheet, we will offer a refund or replacement. For full details of the Abpromise, please visit <https://www.abcam.co.jp/abpromise> or contact our technical team.

Terms and conditions

- Guarantee only valid for products bought direct from Abcam or one of our authorized distributors