

Mouse IL-6 ELISA Kit ab100713

★★★★★ 1 Abreviews 66 References 画像数 5

製品の概要

| | |
|---------|--|
| 製品名 | Mouse IL-6 ELISA Kit |
| 検出方法 | Colorimetric |
| サンプルの種類 | Cell culture extracts, Tissue Extracts |
| アッセイタイプ | Sandwich (quantitative) |
| 検出感度 | < 2 pg/ml |
| 検出範囲 | 0.82 pg/ml - 600 pg/ml |
| 添加回収試験 | 93 % |

特定サンプルでの回収試験

| サンプルの種類 | 平均 % | 測定範囲 |
|-----------------------|-------|------------|
| Cell culture extracts | 94.53 | 84% - 104% |
| Tissue Extracts | 93.39 | 83% - 103% |

| | |
|------|-------------------------------|
| ステップ | Multiple steps standard assay |
| 種交差性 | 交差種: Mouse |

製品の概要

Abcam's IL-6 Mouse ELISA (Enzyme-Linked Immunosorbent Assay) kit is an *in vitro* enzyme-linked immunosorbent assay for the quantitative measurement of mouse IL-6 in cell lysates and tissue lysates.

This assay employs an antibody specific for mouse IL-6 coated on a 96-well plate. Standards and samples are pipetted into the wells and IL-6 present in a sample is bound to the wells by the immobilized antibody. The wells are washed and biotinylated anti-mouse IL-6 antibody is added. After washing away unbound biotinylated antibody, HRP-conjugated streptavidin is pipetted to the wells. The wells are again washed, a TMB substrate solution is added to the wells and color develops in proportion to the amount of IL-6 bound. The Stop Solution changes the color from blue to yellow, and the intensity of the color is measured at 450 nm.

特記事項

Abcam has not and does not intend to apply for the REACH Authorisation of customers' uses of products that contain European Authorisation list (Annex XIV) substances.

It is the responsibility of our customers to check the necessity of application of REACH Authorisation, and any other relevant authorisations, for their intended uses.

| | |
|------------|------------|
| 試験プラットフォーム | Microplate |
|------------|------------|

製品の特性

保存方法

Store at -20°C. Please refer to protocols.

| 内容 | 1 x 96 tests |
|---|--------------|
| 200X HRP-Streptavidin Concentrate | 1 x 200µl |
| 20X Wash Buffer | 1 x 25ml |
| 2X Cell Lysis Buffer | 1 x 5ml |
| 5X Assay Diluent | 1 x 15ml |
| 5X Sample Diluent Buffer | 1 x 10ml |
| Biotinylated anti-Mouse IL-6 | 2 vials |
| IL-6 Microplate (12 x 8 wells) | 1 unit |
| Recombinant mouse IL-6 Standard (lyophilized) | 2 vials |
| Stop Solution | 1 x 8ml |
| TMB One-Step Substrate Reagent | 1 x 12ml |

機能

Cytokine with a wide variety of biological functions. It is a potent inducer of the acute phase response. Plays an essential role in the final differentiation of B-cells into Ig-secreting cells. Involved in lymphocyte and monocyte differentiation. It induces myeloma and plasmacytoma growth and induces nerve cells differentiation. Acts on B-cells, T-cells, hepatocytes, hematopoietic progenitor cells and cells of the CNS. Also acts as a myokine. It is discharged into the bloodstream after muscle contraction and acts to increase the breakdown of fats and to improve insulin resistance.

関連疾患

Genetic variations in IL6 are associated with susceptibility to rheumatoid arthritis systemic juvenile (RASJ) [MIM:604302]. An inflammatory articular disorder with systemic-onset beginning before the age of 16. It represents a subgroup of juvenile arthritis associated with severe extraarticular features and occasionally fatal complications. During active phases of the disorder, patients display a typical daily spiking fever, an evanescent macular rash, lymphadenopathy, hepatosplenomegaly, serositis, myalgia and arthritis.
Note=A IL6 promoter polymorphism is associated with a lifetime risk of development of Kaposi sarcoma in HIV-infected men.

配列類似性

Belongs to the IL-6 superfamily.

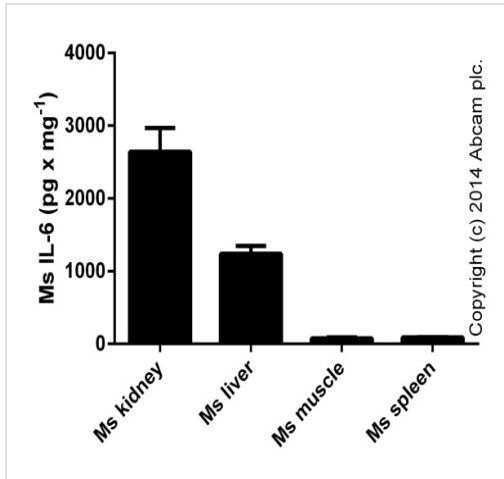
翻訳後修飾

N- and O-glycosylated.

細胞内局在

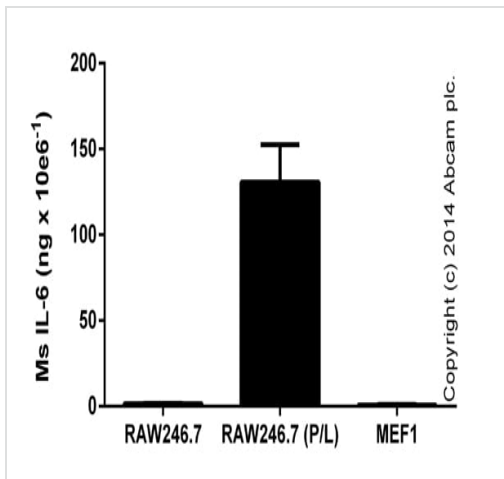
Secreted.

画像



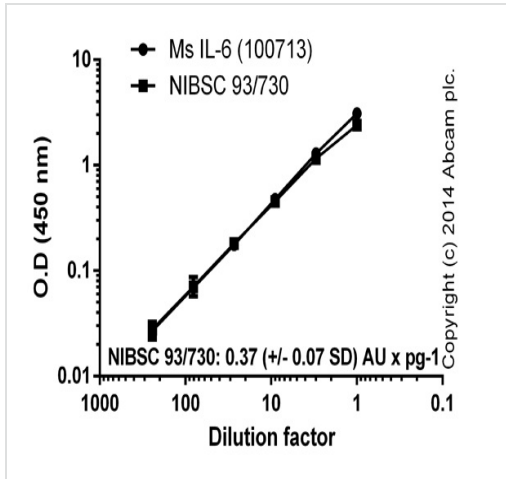
ELISA:IL-6 (Interleukin-6) Mouse ELISA Kit
(ab100713)

IL-6 measured in mouse tissue lysates prepared with RIPA buffer and sonicated in an ice-cold water bath for 12 intervals of a total of 3.5 minutes. 0.02-1 mg protein x mL⁻¹ were tested, results shown as IL-6 per mg of extracted protein (duplicates +/- SD).



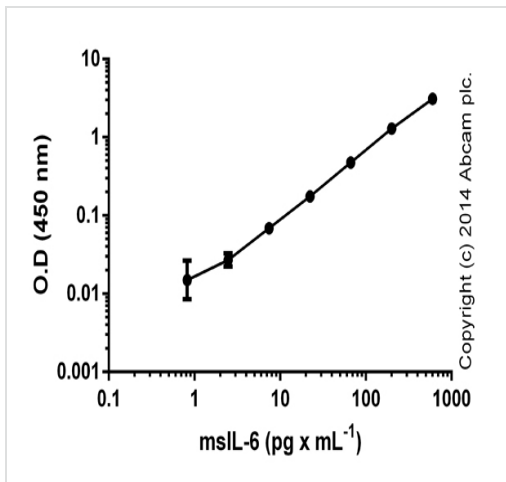
ELISA:IL-6 (Interleukin-6) Mouse ELISA Kit
(ab100713)

IL-6 measured in RIPA lysates from control cells, or cells stimulated for 24 hours with 50 ng x mL⁻¹ of PMA ([ab120297](#)), with the addition of 1 ug x mL⁻¹ of LPS (Sigma) (P/L) for the last 6 hours. Samples were diluted and tested in the range of 1e4-5e5 cells x mL⁻¹, results expressed per million cells; duplicates +/- SD).



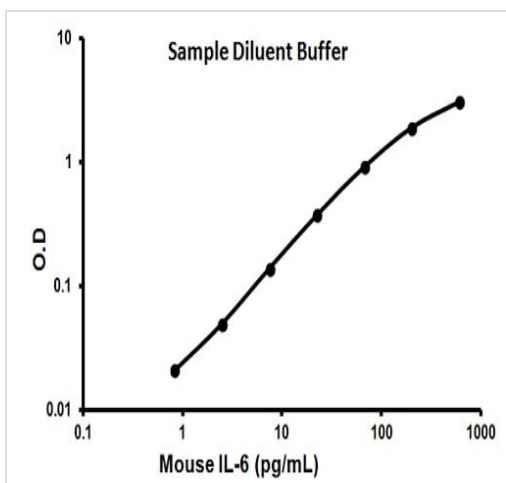
Dilution curves of mouse IL-6 (ab100713) and NIBSC standard (93/730). One pg of standard mouse IL-6 corresponds to 0.37 (+/- 0.07) AU. Background signal subtracted (duplicates; +/- SD).

ELISA:IL-6 (Interleukin-6) Mouse ELISA Kit
(ab100713)



Standard curve of mouse IL-6 with background signal subtracted (duplicates; +/- SD).

ELISA:IL-6 (Interleukin-6) Mouse ELISA Kit
(ab100713)



Representative standard curve using ab100713

Typical standard curve

Our Abpromise to you: Quality guaranteed and expert technical support

- Replacement or refund for products not performing as stated on the datasheet
- Valid for 12 months from date of delivery
- Response to your inquiry within 24 hours

- We provide support in Chinese, English, French, German, Japanese and Spanish
- Extensive multi-media technical resources to help you
- We investigate all quality concerns to ensure our products perform to the highest standards

If the product does not perform as described on this datasheet, we will offer a refund or replacement. For full details of the Abpromise, please visit <https://www.abcam.co.jp/abpromise> or contact our technical team.

Terms and conditions

- Guarantee only valid for products bought direct from Abcam or one of our authorized distributors