

Mouse IL-13 ELISA Kit ab219634

リコンビナント SimpleStep ELISA

★★★★☆ [1 Abreviews](#) [18 References](#) [画像数 6](#)

製品の概要

製品名 Mouse IL-13 ELISA Kit

検出方法 Colorimetric

再現性 Intra-Assay (同時再現性)

サンプル	N	平均値	SD	CV%
supernatant	5			2.2%

Inter-Assay (日差再現性)

サンプル	N	平均値	SD	CV%
supernatant	3			1.4%

サンプルの種類 Cell culture supernatant, Serum, Hep Plasma, EDTA Plasma, Cit plasma

アッセイタイプ Sandwich (quantitative)

検出感度 1.2 pg/ml

検出範囲 1.95 pg/ml - 125 pg/ml

添加回収試験 特定サンプルでの回収試験

サンプルの種類	平均 %	測定範囲
Cell culture supernatant	108	106% - 111%
Serum	97	95% - 98%
Hep Plasma	104	101% - 108%
EDTA Plasma	98	97% - 99%
Cit plasma	97	95% - 100%

全工程の試験時間 1h 30m

ステップ One step assay

種交差性

交差種: Mouse

製品の概要

Mouse IL-13 ELISA Kit (ab219634) is a single-wash 90 min sandwich ELISA designed for the quantitative measurement of IL-13 protein in cell culture supernatant, serum, cit plasma, edta plasma, and hep plasma. It uses our proprietary SimpleStep ELISA® technology. Quantitate Mouse IL-13 with 1.2 pg/ml sensitivity.

SimpleStep ELISA® technology employs capture antibodies conjugated to an affinity tag that is recognized by the monoclonal antibody used to coat our SimpleStep ELISA® plates. This approach to sandwich ELISA allows the formation of the antibody-analyte sandwich complex in a single step, significantly reducing assay time. See the SimpleStep ELISA® protocol summary in the image section for further details. Our SimpleStep ELISA® technology provides several benefits:

- Single-wash protocol reduces assay time to 90 minutes or less
- High sensitivity, specificity and reproducibility from superior antibodies
- Fully validated in biological samples
- 96-wells plate breakable into 12 x 8 wells strips

A 384-well SimpleStep ELISA® microplate (**ab203359**) is available to use as an alternative to the 96-well microplate provided with SimpleStep ELISA® kits.

特記事項

Interleukin-13 (IL-13) is a secreted immunoregulatory cytokine in the IL-4/IL-13 family that is linked to allergic reactions and cancer pathogenesis. IL-13 inhibits inflammatory cytokine production and promotes immunoglobulin class switching on B-cells. IL-13 synergizes with IL2 in regulating interferon-gamma synthesis. IL-13 is linked to allergic rhinitis, a common disease of complex inheritance characterized by mucosal inflammation caused by allergen exposure.

試験プラットフォーム

Microplate (12 x 8 well strips)

製品の特性

保存方法

Store at +4°C. Please refer to protocols.

内容	1 x 96 tests	1 x 96 tests
10X Mouse IL-13 Capture Antibody	1 x 600µl	1 x 600µl
10X Mouse IL-13 Detector Antibody	1 x 600µl	1 x 600µl
10X Wash Buffer PT (ab206977)	1 x 20ml	1 x 20ml
Antibody Diluent CPR2	1 x 6ml	1 x 6ml
Mouse IL-13 Lyophilized Recombinant Protein	2 vials	2 vials
Plate Seals	1 unit	1 unit
Sample Diluent NS (ab193972)	1 x 50ml	1 x 50ml
SimpleStep Pre-Coated 96-Well Microplate (ab206978)	1 unit	1 unit

内容	1 x 96 tests	1 x 96 tests
Stop Solution	1 x 12ml	1 x 12ml
TMB Development Solution	1 x 12ml	1 x 12ml

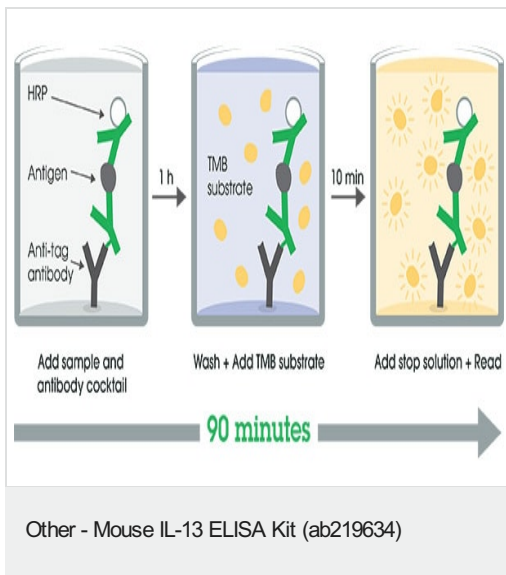
機能 Cytokine (PubMed:8096327, PubMed:8097324). Inhibits inflammatory cytokine production (PubMed:8096327). Synergizes with IL2 in regulating interferon-gamma synthesis (PubMed:8096327). May be critical in regulating inflammatory and immune responses (PubMed:8096327, PubMed:8097324). Positively regulates IL31RA expression in macrophages.

関連疾患 Allergic rhinitis

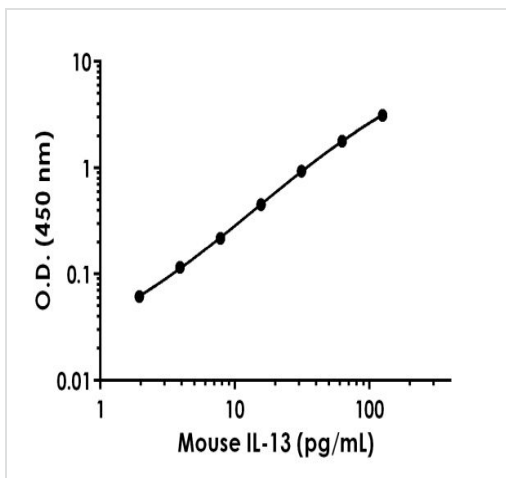
配列類似性 Belongs to the IL-4/IL-13 family.

細胞内局在 Secreted.

画像

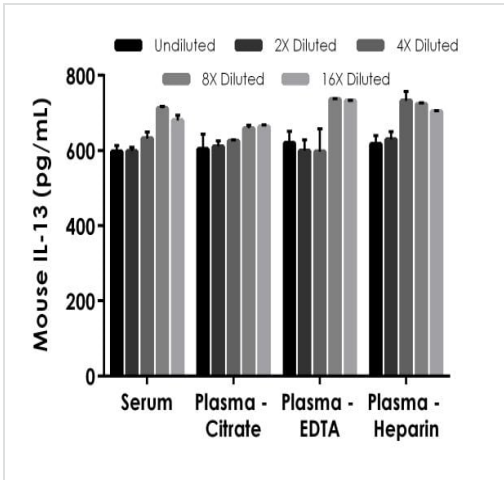


SimpleStep ELISA technology allows the formation of the antibody-antigen complex in one single step, reducing assay time to 90 minutes. Add samples or standards and antibody mix to wells all at once, incubate, wash, and add your final substrate. See protocol for a detailed step-by-step guide.



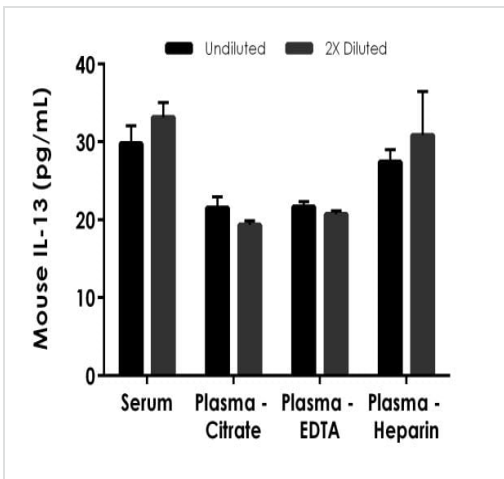
Background-subtracted data values (mean +/- SD) are graphed.

Example of mouse IL-13 standard curve.



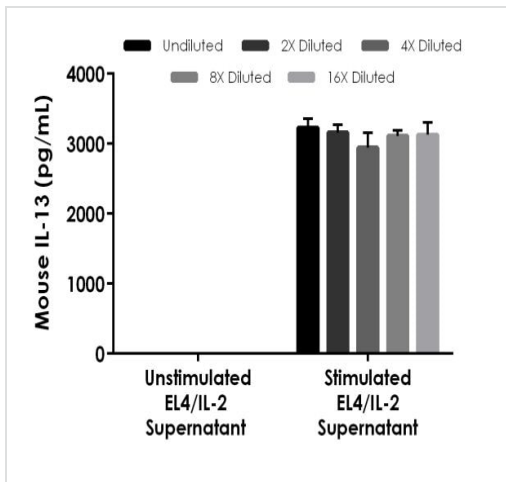
Interpolated concentrations of spike IL-13 in mouse serum and plasma samples.

The concentrations of IL-13 were measured in duplicates, interpolated from the IL-13 standard curves and corrected for sample dilution. Undiluted samples are as follows: serum 10%, plasma (citrate) 10%, plasma (EDTA) 10% and plasma (heparin) 5%. The interpolated dilution factor corrected values are plotted (mean +/- SD, n=2).



Interpolated concentrations of native IL-13 in mouse serum and plasma samples.

The concentrations of IL-13 were measured in duplicates, interpolated from the IL-13 standard curves and corrected for sample dilution. Undiluted samples are as follows: serum 10%, plasma (citrate) 10%, plasma (EDTA) 10% and plasma (heparin) 5%. The interpolated dilution factor corrected values are plotted (mean +/- SD, n=2). The mean IL-13 concentration was determined to be 31.5 pg/mL in serum, 21.1 pg/mL in plasma (citrate) and 20.4 pg/mL in plasma (EDTA) and 29.1 pg/mL in plasma (heparin).



Interpolated concentrations of native IL-13 in mouse EL4/IL-2 cell culture supernatant unstimulated and PHA/PMA stimulated samples.

The concentrations of IL-13 were measured in duplicates, interpolated from the IL-13 standard curves and corrected for sample dilution. Undiluted samples are 2%. The interpolated dilution factor corrected values are plotted (mean +/- SD, n=2). The mean IL-13 concentration was determined to be 3144 pg/mL in PHA/PMA stimulated EL4/IL-2 cell culture supernatant and undetermined in media and unstimulated cell culture supernatant.

Powered by recombinant antibodies

Research with confidence
Consistent and reproducible results

Long-term and scalable supply
Recombinant technology

Success from the first experiment
Confirmed specificity

Ethical standards compliant
Animal-free production

Sandwich ELISA - Mouse IL-13 ELISA Kit (ab219634)

To learn more about the advantages of recombinant antibodies see [here](#).

Please note: All products are "FOR RESEARCH USE ONLY. NOT FOR USE IN DIAGNOSTIC PROCEDURES"

Our Abpromise to you: Quality guaranteed and expert technical support

- Replacement or refund for products not performing as stated on the datasheet
- Valid for 12 months from date of delivery
- Response to your inquiry within 24 hours
- We provide support in Chinese, English, French, German, Japanese and Spanish
- Extensive multi-media technical resources to help you
- We investigate all quality concerns to ensure our products perform to the highest standards

If the product does not perform as described on this datasheet, we will offer a refund or replacement. For full details of the Abpromise, please visit <https://www.abcam.co.jp/abpromise> or contact our technical team.

Terms and conditions

- Guarantee only valid for products bought direct from Abcam or one of our authorized distributors