

Mouse IL-1 beta ELISA Kit ab197742

リコンビナント SimpleStep ELISA

★★★★☆ 3 Abreviews 141 References 画像数 13

製品の概要

製品名 Mouse IL-1 beta ELISA Kit

検出方法 Colorimetric

再現性 Intra-Assay (同時再現性)

サンプル	N	平均値	SD	CV%
Overall	5			6.1%

Inter-Assay (日差再現性)

サンプル	N	平均値	SD	CV%
Overall	3			7.7%

サンプルの種類 Cell culture supernatant, Urine, Serum, Cell culture extracts, Tissue Extracts, Cit plasma

アッセイタイプ Sandwich (quantitative)

検出感度 1 pg/ml

検出範囲 1.56 pg/ml - 100 pg/ml

添加回収試験 特定サンプルでの回収試験

サンプルの種類	平均 %	測定範囲
Cell culture supernatant	105	100% - 108%
Urine	94	91% - 95%
Serum	101	98% - 103%
Plasma	89	78% - 95%
Tissue Homogenate	97	95% - 100%

全工程の試験時間 1h 30m

ステップ One step assay

種交差性

交差種: Mouse

非交差種: Sheep, Cow

製品の概要

Mouse IL-1 beta ELISA Kit (ab197742) is a single-wash 90 min sandwich ELISA designed for the quantitative measurement of IL-1 beta protein in cell culture extracts, cell culture supernatant, cit plasma, serum, tissue extracts, and urine. It uses our proprietary SimpleStep ELISA® technology. Quantitate Mouse IL-1 beta with 1 pg/ml sensitivity.

SimpleStep ELISA® technology employs capture antibodies conjugated to an affinity tag that is recognized by the monoclonal antibody used to coat our SimpleStep ELISA® plates. This approach to sandwich ELISA allows the formation of the antibody-analyte sandwich complex in a single step, significantly reducing assay time. See the SimpleStep ELISA® protocol summary in the image section for further details. Our SimpleStep ELISA® technology provides several benefits:

- Single-wash protocol reduces assay time to 90 minutes or less
- High sensitivity, specificity and reproducibility from superior antibodies
- Fully validated in biological samples
- 96-wells plate breakable into 12 x 8 wells strips

A 384-well SimpleStep ELISA® microplate (**ab203359**) is available to use as an alternative to the 96-well microplate provided with SimpleStep ELISA® kits.

ASSAY SPECIFICITY

This kit recognizes both native and recombinant mouse IL-1 beta protein in serum, plasma, and cell culture supernatant, cell and tissue extract samples only.

Mouse brain, kidney, liver and lung homogenates were tested but no signal was detected.

Plasma (EDTA) and plasma (heparin) samples have not been tested with this kit.

CROSS REACTIVITY

Recombinant Human IL-1 beta, Mouse IL-1 alpha, and Mouse IL-1 receptor1 were prepared at 5 ng/mL and assayed for cross reactivity. No cross-reactivity was observed.

INTERFERENCE

Recombinant Human IL-1 beta, Mouse IL-1 alpha, and Mouse IL-1 receptor1 were prepared at 5 ng/mL and tested for interference. No interference with was observed.

SPECIES REACTIVITY

This kit recognizes mouse IL-1 beta protein.

No signal was observed in 25% serum samples from the following species: Human, Dog, Rabbit,

	Hamster
特記事項	<p>IL-1 beta (IL-1β) is a 17.5 kDa cytokine protein of the Interleukin 1 family. IL-1β is secreted by macrophages and other cell types in response to inflammatory agents or infection. IL-1β plays a role in a number of cellular processes, including immune responses, bone remodeling, apoptosis and inflammatory pain hypersensitivity.</p> <p>Abcam has not and does not intend to apply for the REACH Authorisation of customers' uses of products that contain European Authorisation list (Annex XIV) substances.</p> <p>It is the responsibility of our customers to check the necessity of application of REACH Authorisation, and any other relevant authorisations, for their intended uses.</p>
試験プラットフォーム	Microplate (12 x 8 well strips)

製品の特性

保存方法 Store at +4°C. Please refer to protocols.

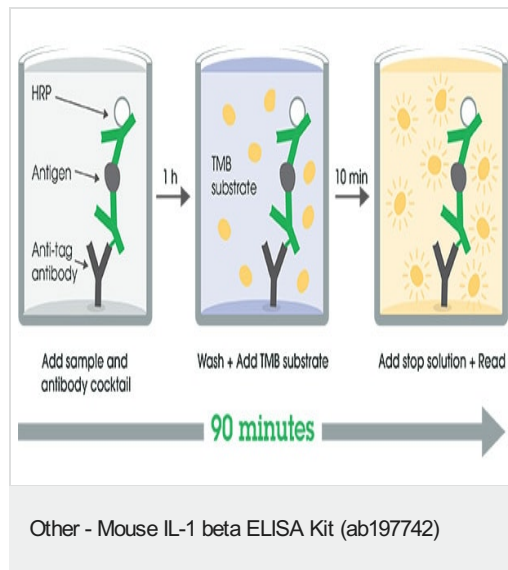
内容	1 x 96 tests
10X Mouse IL-1 beta Capture Antibody	1 x 600 μ l
10X Mouse IL-1 beta Detector Antibody	1 x 600 μ l
10X Wash Buffer PT (ab206977)	1 x 20ml
50X Cell Extraction Enhancer Solution (ab193971)	1 x 1ml
5X Cell Extraction Buffer PTR (ab193970)	1 x 10ml
Antibody Diluent 5BI	1 x 6ml
Mouse IL-1 beta Lyophilized Recombinant Protein	2 vials
Plate Seals	1 unit
Sample Diluent NS (ab193972)	1 x 50ml
SimpleStep Pre-Coated 96-Well Microplate (ab206978)	1 unit
Stop Solution	1 x 12ml
TMB Development Solution	1 x 12ml

機能	Potent proinflammatory cytokine. Initially discovered as the major endogenous pyrogen, induces prostaglandin synthesis, neutrophil influx and activation, T-cell activation and cytokine production, B-cell activation and antibody production, and fibroblast proliferation and collagen production. Promotes Th17 differentiation of T-cells.
組織特異性	Expressed in activated monocytes/macrophages (at protein level).
配列類似性	Belongs to the IL-1 family.
翻訳後修飾	Activation of the IL1B precursor involves a CASP1-catalyzed proteolytic cleavage. Processing and secretion are temporarily associated.

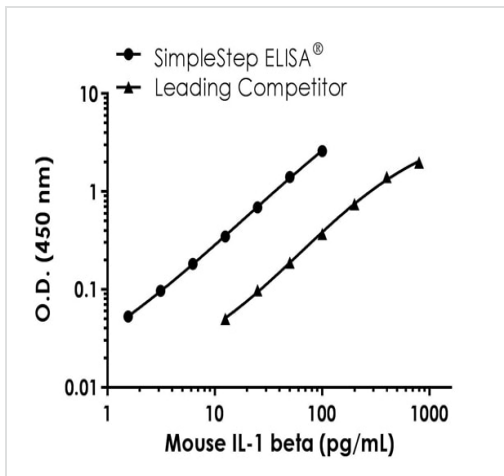
細胞内局在

Cytoplasm, cytosol. Lysosome. Secreted, exosome. Cytoplasmic vesicle, autophagosome. Secreted. The precursor is cytosolic. In response to inflammasome-activating signals, such as ATP for NLRP3 inflammasome or bacterial flagellin for NLRC4 inflammasome, cleaved and secreted. IL1B lacks any known signal sequence and the pathway(s) of its secretion is(are) not yet fully understood (PubMed:24201029). On the basis of experimental results, several unconventional secretion mechanisms have been proposed. 1. Secretion via secretory lysosomes: a fraction of CASP1 and IL1B precursor may be incorporated, by a yet undefined mechanism, into secretory lysosomes that undergo Ca^{2+} -dependent exocytosis with release of mature IL1B (PubMed:15192144). 2. Secretory autophagy: IL1B-containing autophagosomes may fuse with endosomes or multivesicular bodies (MVBs) and then merge with the plasma membrane releasing soluble IL1B or IL1B-containing exosomes (PubMed:24201029). However, autophagy impacts IL1B production at several levels and its role in secretion is still controversial. 3. Secretion via exosomes: ATP-activation of P2RX7 leads to the formation of MVBs containing exosomes with entrapped IL1B, CASP1 and other inflammasome components. These MVBs undergo exocytosis with the release of exosomes. The release of soluble IL1B occurs after the lysis of exosome membranes (By similarity). 4. Secretion by microvesicle shedding: activation of the ATP receptor P2RX7 may induce an immediate shedding of membrane-derived microvesicles containing IL1B and possibly inflammasome components. The cytokine is then released in the extracellular compartment after microvesicle lysis (PubMed:11728343). 5. Release by translocation through permeabilized plasma membrane. This may occur in cells undergoing pyroptosis due to sustained activation of the inflammasome (By similarity). These mechanisms may not be mutually exclusive.

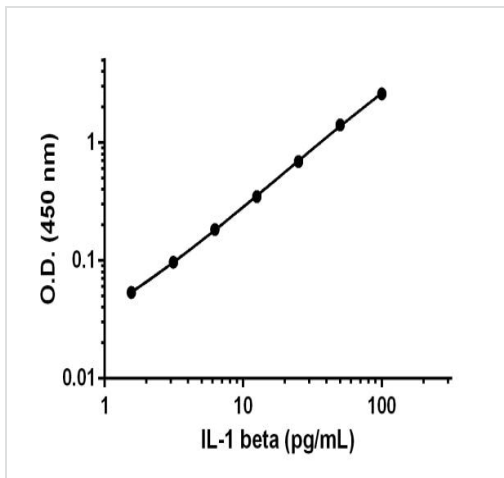
画像



SimpleStep ELISA technology allows the formation of the antibody-antigen complex in one single step, reducing assay time to 90 minutes. Add samples or standards and antibody mix to wells all at once, incubate, wash, and add your final substrate. See protocol for a detailed step-by-step guide.



Mouse IL-1 beta standard curve comparison data



Example of IL-1 beta standard curve in Sample Diluent NS.

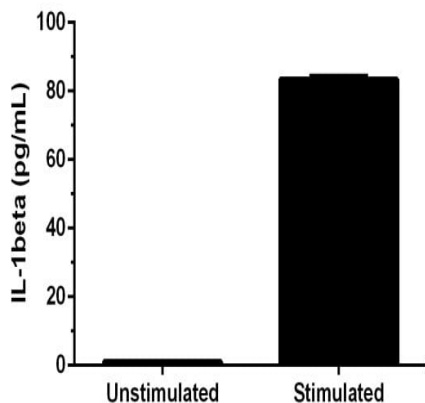
Standard curve comparison between mouse IL-1 beta SimpleStep ELISA® kit and traditional ELISA kit from leading competitor. SimpleStep ELISA kit shows a 4-fold increase in sensitivity.

Background-subtracted data values (mean \pm SD) are graphed.

Standard Curve Measurements			
Concentration (pg/mL)	O.D 450 nm		Mean O.D
	1	2	
0	0.047	0.048	0.048
1.56	0.103	0.100	0.101
3.13	0.147	0.142	0.145
6.25	0.232	0.231	0.231
12.5	0.396	0.395	0.396
25	0.738	0.740	0.739
50	1.461	1.453	1.457
100	2.647	2.629	2.638

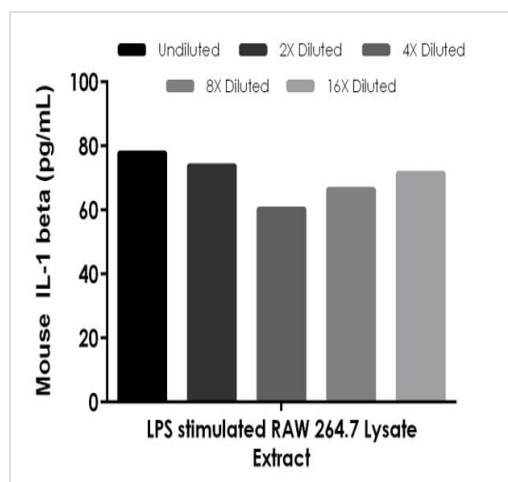
Example of mouse IL-1 beta standard curve in Sample Diluent NS.

The IL-1 beta standard curve was prepared as described. Raw data values are shown in the table. Background-subtracted data values (mean +/- SD) are graphed.



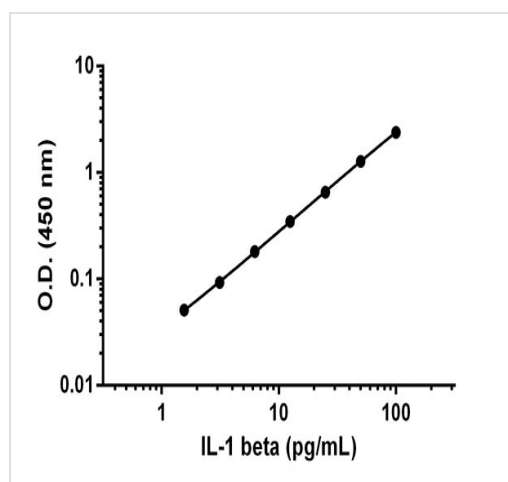
Comparison of secreted IL-1 beta in unstimulated and LPS stimulated RAW264.7 cells.

RAW264.7 cells were grown in the absence (unstimulated) or presence of 5 µg/mL Lipopolysaccharide (LPS) (stimulated) for 48 hours. IL-1 beta was measured in 2-fold diluted cell culture supernatants of unstimulated and LPS stimulated RAW264.7 and cell culture media. Measured values were interpolated from the IL-1 beta Standard Curve diluted in Sample Diluent NS and corrected for dilution factor. Mean of duplicate values +/-SD are graphed: 1.1 pg/mL unstimulated, 83.5 pg/mL stimulated. There was no detectable signal in media.



Interpolated concentrations of native IL-1 beta in mouse LPS-stimulated RAW 264.7 extract based on a 50 µg/mL extract load.

The concentrations of IL-1 beta were measured in duplicate and interpolated from the IL-1 beta standard curve and corrected for sample dilution. The interpolated dilution factor corrected values are plotted (mean +/- SD, n=2). The mean IL-1 beta concentration was determined to be 70 pg/mL in LPS stimulated RAW 264.7 Lysate.



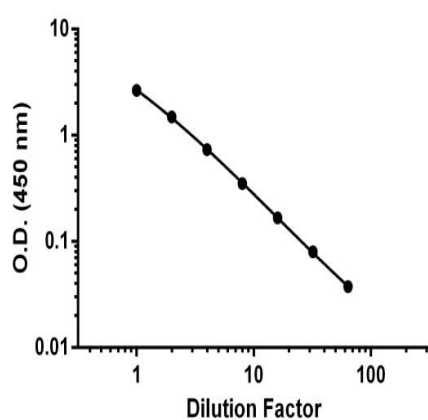
Example of IL-1 beta standard curve in 1X Cell Extraction Buffer PTR.

Background-subtracted data values (mean +/- SD) are graphed.

Standard Curve Measurements			
Concentration (pg/mL)	O.D 450 nm		Mean O.D
	1	2	
0	0.051	0.049	0.050
1.56	0.102	0.099	0.100
3.13	0.147	0.138	0.142
6.25	0.244	0.217	0.230
12.5	0.421	0.371	0.396
25	0.748	0.660	0.704
50	1.386	1.260	1.323
100	2.463	2.403	2.433

Example of mouse IL-1 beta standard curve in 1X
Cell Extraction Buffer PTR.

The IL-1 beta standard curve was prepared as described. Raw data values are shown in the table. Background-subtracted data values (mean +/- SD) are graphed.



Demonstration of the linearity of dilution by the
titration of RAW264.7 stimulated for 48 hours with
LPS undiluted to 32-fold dilution in Sample Diluent
NS.

Background-subtracted data values (mean +/- SD, n = 2) are
graphed.

Dilution Factor	Interpolated value	100% Stimulated RAW 264.7 Supernatant
Undiluted	pg/mL	78.5
	% Expected value	100
2	pg/mL	41.9
	% Expected value	115
4	pg/mL	20.2
	% Expected value	123
8	pg/mL	9.5
	% Expected value	117
16	pg/mL	4.3
	% Expected value	111

Linearity of dilution in Sample Diluent NS.

Linearity of dilution is determined based on interpolated values from the standard curve. Linearity of dilution defines a sample concentration interval in which interpolated target concentrations are directly proportional to sample dilution.

Native IL-1 beta was measured in the following biological samples in a 2-fold dilution series. Sample dilutions are made in Sample Diluent NS.

Dilution Factor	Interpolated value	50 µg/mL Stimulated RAW 264.7 Lysate
Undiluted	pg/mL	77.9
	% Expected value	100
2	pg/mL	36.9
	% Expected value	95
4	pg/mL	15.1
	% Expected value	77
8	pg/mL	8.3
	% Expected value	85
16	pg/mL	4.5
	% Expected value	92

Linearity of dilution in 1X Cell Extraction Buffer PTR.

Linearity of dilution is determined based on interpolated values from the standard curve. Linearity of dilution defines a sample concentration interval in which interpolated target concentrations are directly proportional to sample dilution.

Native IL-1 beta was measured in the following biological samples in a 2-fold dilution series. Sample dilutions are made in 1X Cell Extraction Buffer PTR.

Dilution Factor	Interpolated value	25% Mouse Serum	25% Mouse Plasma (Citrate)	25% Mouse Urine
Undiluted	pg/mL	84.9	68.9	45.8
	% Expected value	100	100	100
2	pg/mL	43.4	32.2	22.1
	% Expected value	102	93	97
4	pg/mL	23.2	17.3	11.6
	% Expected value	110	100	101
8	pg/mL	11.1	8.5	6.0
	% Expected value	105	99	105
16	pg/mL	5.2	5.0	2.8
	% Expected value	98	116	98

Linearity of dilution in Sample Diluent NS (spiked samples)

Linearity of dilution is determined based on interpolated values from the standard curve. Linearity of dilution defines a sample concentration interval in which interpolated target concentrations are directly proportional to sample dilution.

Recombinant IL-1 beta was spiked into the following biological samples and diluted in a 2-fold dilution series in Sample Diluent NS.

25% pooled serum, plasma (Citrate), and urine samples from healthy donors was measured in duplicate. All values were below the detectable range of the assay.

Powered by
recombinant antibodies



Research with confidence
Consistent and reproducible results



Long-term and scalable supply
Recombinant technology



Success from the first experiment
Confirmed specificity



Ethical standards compliant
Animal-free production

Sandwich ELISA - Mouse IL-1 beta ELISA Kit
(ab197742)

To learn more about the advantages of recombinant antibodies see [here](#).

Please note: All products are "FOR RESEARCH USE ONLY. NOT FOR USE IN DIAGNOSTIC PROCEDURES"

Our Abpromise to you: Quality guaranteed and expert technical support

- Replacement or refund for products not performing as stated on the datasheet
- Valid for 12 months from date of delivery
- Response to your inquiry within 24 hours
- We provide support in Chinese, English, French, German, Japanese and Spanish
- Extensive multi-media technical resources to help you
- We investigate all quality concerns to ensure our products perform to the highest standards

If the product does not perform as described on this datasheet, we will offer a refund or replacement. For full details of the Abpromise, please visit <https://www.abcam.co.jp/abpromise> or contact our technical team.

Terms and conditions

- Guarantee only valid for products bought direct from Abcam or one of our authorized distributors