

Mouse GRO gamma ELISA Kit (CXCL3) ab272191

リコンビナント SimpleStep ELISA

画像数 7

製品の概要

製品名 Mouse GRO gamma ELISA Kit (CXCL3)

検出方法 Colorimetric

再現性 Intra-Assay (同時再現性)

サンプル	N	平均値	SD	CV%
Serum	8			9.3%

Inter-Assay (日差再現性)

サンプル	N	平均値	SD	CV%
Serum	3			1.8%

サンプルの種類 Cell culture supernatant, Serum, Hep Plasma, EDTA Plasma, Cit plasma

アッセイタイプ Sandwich (quantitative)

検出感度 1.3 pg/ml

検出範囲 6.25 pg/ml - 400 pg/ml

添加回収試験 特定サンプルでの回収試験

サンプルの種類	平均 %	測定範囲
Cell culture supernatant	100	97% - 103%
Serum	101	93% - 108%
Hep Plasma	94	88% - 101%
EDTA Plasma	94	86% - 93%
Cit plasma	87	84% - 90%

全工程の試験時間 1h 30m

ステップ One step assay

種交差性

交差種: Mouse

製品の概要

Mouse GRO gamma ELISA kit (ab272191) is a single-wash 90 min sandwich ELISA designed for the quantitative measurement of GRO gamma protein in serum, plasmas and tissue culture supernatants. It uses our proprietary SimpleStep ELISA® technology. Quantitate Mouse GRO gamma with 1.3 pg/mL sensitivity.

SimpleStep ELISA® technology employs capture antibodies conjugated to an affinity tag that is recognized by the monoclonal antibody used to coat our SimpleStep ELISA® plates. This approach to sandwich ELISA allows the formation of the antibody-analyte sandwich complex in a single step, significantly reducing assay time. See the SimpleStep ELISA® protocol summary in the image section for further details. Our SimpleStep ELISA® technology provides several benefits:

- Single-wash protocol reduces assay time to 90 minutes or less
- High sensitivity, specificity and reproducibility from superior antibodies
- Fully validated in biological samples
- 96-wells plate breakable into 12 x 8 wells strips

A 384-well SimpleStep ELISA® microplate (**ab203359**) is available to use as an alternative to the 96-well microplate provided with SimpleStep ELISA® kits.

特記事項

Chemokines are a group of small structurally related molecules that play fundamental roles in the development, homeostasis, and function of the immune system. GRO gamma (CXCL3) is an 8 kDa proinflammatory member of the chemokine heparin-binding CXC subfamily, or alpha chemokines, and is a ligand for CXCR2. GRO gamma has chemotactic activity for neutrophils and may play a role in inflammation and exert its effects on endothelial cells in an autocrine fashion. Mouse GRO gamma shares 62%, 90% and 63% sequence homology with human, rat and cow, respectively.

試験プラットフォーム

Pre-coated microplate (12 x 8 well strips)

製品の特性

保存方法

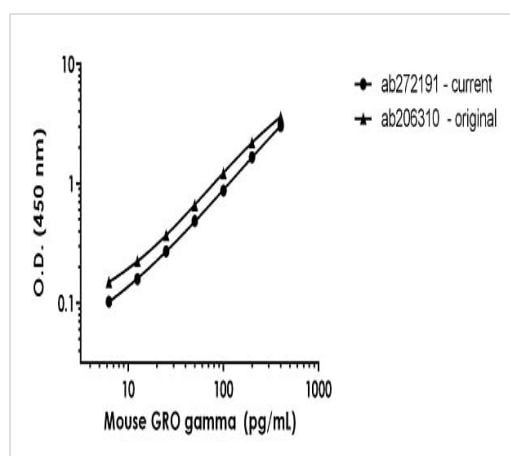
Store at +4°C. Please refer to protocols.

内容	1 x 96 tests
10X Mouse GRO gamma (CXCL3) Capture Antibody	1 x 600µl
10X Mouse GRO gamma (CXCL3) Detector Antibody	1 x 600µl
10X Wash Buffer PT (ab206977)	1 x 20ml
Antibody Diluent 5BR	1 x 6ml
Mouse GRO gamma (CXCL3) Lyophilized Recombinant Protein	2 vials

内容	1 x 96 tests
Plate Seals	1 unit
Sample Diluent NS (ab193972)	1 x 50ml
SimpleStep Pre-Coated 96-Well Microplate (ab206978)	1 unit
Stop Solution	1 x 12ml
TMB Development Solution	1 x 12ml

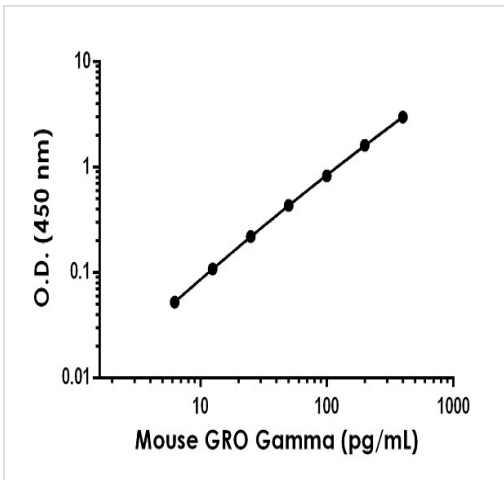
機能	Ligand for CXCR2 (By similarity). Has chemotactic activity for neutrophils. May play a role in inflammation and exert its effects on endothelial cells in an autocrine fashion. In vitro, the processed form GRO-gamma(5-73) shows a fivefold higher chemotactic activity for neutrophilic granulocytes.
配列類似性	Belongs to the intercrine alpha (chemokine CxC) family.
翻訳後修飾	N-terminal processed form GRO-gamma(5-73) is produced by proteolytic cleavage after secretion from peripheral blood monocytes.
細胞内局在	Secreted.

画像



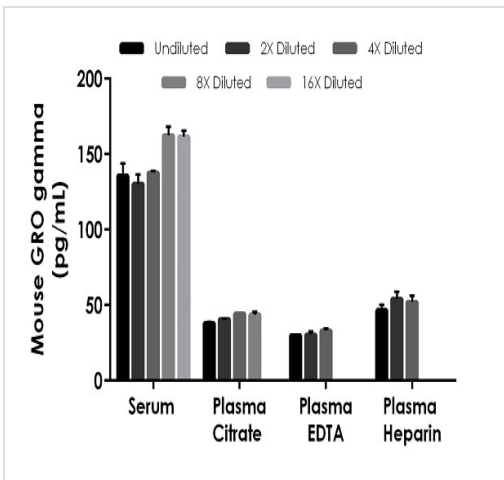
Mouse GRO gamma standard curve comparison

Standard Curve comparison between the original Mouse GRO gamma SimpleStep ELISA kit ([ab206310](#)) and current Mouse GRO gamma SimpleStep ELISA kit ([ab272191](#)).



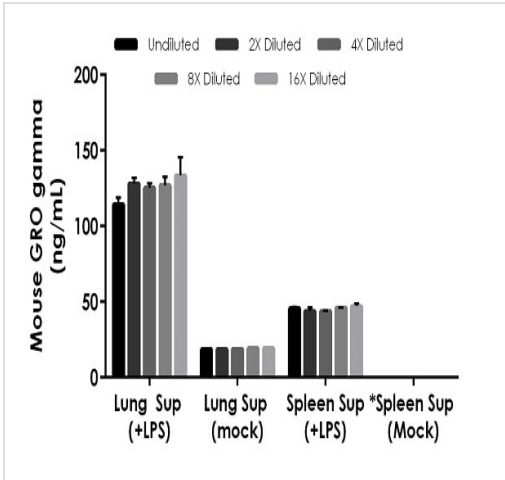
Example of mouse GRO gamma standard curve in Sample Diluent NS.

The GRO gamma standard curve was prepared as described in Section 10. Raw data values are shown in the table. Background-subtracted data values (mean +/- SD) are graphed.



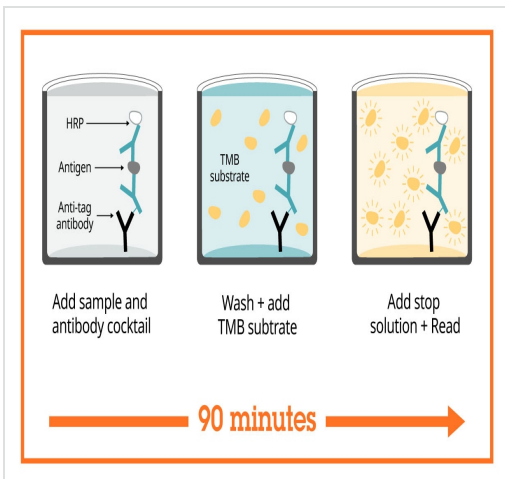
Interpolated concentrations of native GRO gamma in mouse serum, plasma and cell culture supernatant samples.

The concentrations of GRO gamma were measured in duplicates, interpolated from the GRO gamma standard curves and corrected for sample dilution. Undiluted samples are as follows: serum 100%, plasma (citrate) 50%, plasma EDTA (100%) and plasma (heparin) 25%. The interpolated dilution factor corrected values are plotted (mean +/- SD, n=2). The mean GRO gamma concentration was determined to be 145.55 pg/mL in serum, 41.66 pg/mL in plasma (citrate), 31.17 pg/ml in plasma (EDTA) and 50.92 pg/mL in plasma (heparin).



Interpolated concentrations of native GRO gamma in mouse lung culture supernatant and spleen culture supernatant.

The concentrations of GRO gamma were measured in duplicate and interpolated from the GRO gamma standard curve and corrected for sample dilution. The interpolated dilution factor corrected values are plotted (mean +/- SD, n=2). The mean GRO gamma concentration was determined to be 125 ng/mL in mouse lung supernatant treated with 5mg/ml LPS for 5 days and 18 ng/mL in mouse lung supernatants, mock treatment and 45.25 ng/ml in mouse spleen supernatant treated with 5mg/ml LPS for 5 days. *GRO gamma levels were assayed two times and found to be below the level of detection in mock treated mouse spleen supernatant.



SimpleStep ELISA technology allows the formation of the antibody-antigen complex in one single step, reducing assay time to 90 minutes. Add samples or standards and antibody mix to wells all at once, incubate, wash, and add your final substrate. See protocol for a detailed step-by-step guide.

Sandwich ELISA - Mouse GRO gamma ELISA Kit (CXCL3) (ab272191)

Powered by
recombinant antibodies



Research with confidence
Consistent and reproducible results



Long-term and scalable supply
Recombinant technology



Success from the first experiment
Confirmed specificity



Ethical standards compliant
Animal-free production

Sandwich ELISA - Mouse GRO gamma ELISA
Kit (CXCL3) (ab272191)

To learn more about the advantages of recombinant antibodies see [here](#).

**Get more done with
SimpleStep ELISA**



Easy to use
Single-wash 90-minute protocol



Flexible
Matched antibody pairs available



Precision antibodies
High sensitivity, specificity and reproducibility



Scalable
Now in 10-pack and 384-well formats

Sandwich ELISA - Mouse GRO gamma ELISA Kit
(CXCL3) (ab272191)

To learn more about the advantages of SimpleStep ELISA[®] kits see [here](#).

Please note: All products are "FOR RESEARCH USE ONLY. NOT FOR USE IN DIAGNOSTIC PROCEDURES"

Our Abpromise to you: Quality guaranteed and expert technical support

- Replacement or refund for products not performing as stated on the datasheet
- Valid for 12 months from date of delivery
- Response to your inquiry within 24 hours

- We provide support in Chinese, English, French, German, Japanese and Spanish
- Extensive multi-media technical resources to help you
- We investigate all quality concerns to ensure our products perform to the highest standards

If the product does not perform as described on this datasheet, we will offer a refund or replacement. For full details of the Abpromise, please visit <https://www.abcam.co.jp/abpromise> or contact our technical team.

Terms and conditions

- Guarantee only valid for products bought direct from Abcam or one of our authorized distributors