

Mouse DKK1 ELISA Kit ab197746

リコンビナント SimpleStep ELISA

★★★★★ 1 Abreviews 2 References 画像数 7

製品の概要

製品名	Mouse DKK1 ELISA Kit				
検出方法	Colorimetric				
再現性	Intra-Assay (同時再現性)				
	サンプル	N	平均値	SD	CV%
	Overall	8			5.2%
	Inter-Assay (日差再現性)				
	サンプル	N	平均値	SD	CV%
	Overall	3			5.26%
サンプルの種類	Cell culture supernatant, Serum, Cit plasma				
アッセイタイプ	Sandwich (quantitative)				
検出感度	6.66 pg/ml				
検出範囲	39.1 pg/ml - 2500 pg/ml				
添加回収試験	特定サンプルでの回収試験				
	サンプルの種類		平均 %	測定範囲	
	Serum		114	109% - 120%	
	Cell culture media		99	93% - 105%	
	Cit plasma		112	99% - 121%	
全工程の試験時間	1h 30m				
ステップ	One step assay				
種交差性	交差種: Mouse				
製品の概要	Mouse DKK1 ELISA Kit (ab197746) is a single-wash 90 min sandwich ELISA designed for the quantitative measurement of DKK1 protein in cell culture supernatant, cit plasma, and serum. It				

uses our proprietary SimpleStep ELISA® technology. Quantitate Mouse DKK1 with 6.66 pg/ml sensitivity.

SimpleStep ELISA® technology employs capture antibodies conjugated to an affinity tag that is recognized by the monoclonal antibody used to coat our SimpleStep ELISA® plates. This approach to sandwich ELISA allows the formation of the antibody-analyte sandwich complex in a single step, significantly reducing assay time. See the SimpleStep ELISA® protocol summary in the image section for further details. Our SimpleStep ELISA® technology provides several benefits:

- Single-wash protocol reduces assay time to 90 minutes or less
- High sensitivity, specificity and reproducibility from superior antibodies
- Fully validated in biological samples
- 96-wells plate breakable into 12 x 8 wells strips

A 384-well SimpleStep ELISA® microplate ([ab203359](#)) is available to use as an alternative to the 96-well microplate provided with SimpleStep ELISA® kits.

特記事項

Dickkopf-related proteins are secreted proteins with two cysteine-rich domains. They are important in early vertebrate development due to their antagonistic relationship to Wnt signaling, which is involved in embryonic development, limb development, somitogenesis, and eye formation. In adults Dickkopf-related proteins are important to bone formation and bone related diseases, as well as certain cancers and Alzheimer disease. Dickkopf-related protein 1 (DKK1) is one of two secreted inhibitors of canonical Wnt signaling. DKK1 decreases Wnt signaling by inhibiting the interaction between LRP5/6 and Wnt-frizzled complexes. Elevated DKK1 levels are associated with the presence of osteolytic bone lesions in multiple myeloma patients, and may also contribute to the osteopenia and hypercalcemia often associated with myeloma. The inhibition of DKK1 has shown the reversal of the bone deteriorating patterns associated with osteoarthritis.

試験プラットフォーム

Microplate (12 x 8 well strips)

製品の特性

保存方法

Store at +4°C. Please refer to protocols.

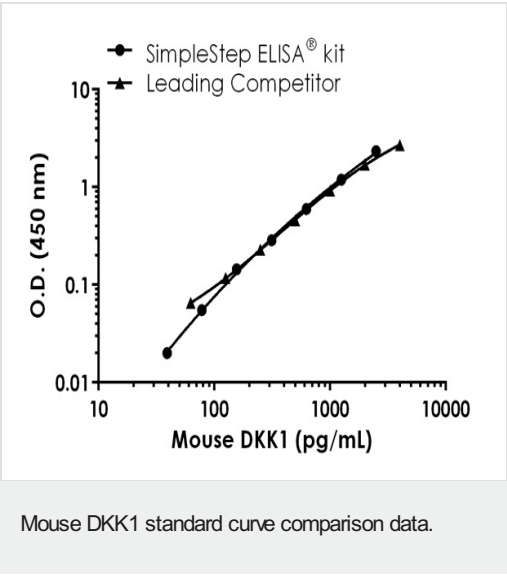
内容	1 x 96 tests
10X Mouse DKK1 Capture Antibody	1 x 600µl
10X Mouse DKK1 Detector Antibody	1 x 600µl
10X Wash Buffer PT (ab206977)	1 x 20ml
Antibody Diluent 5BI	1 x 6ml
Mouse DKK1 Lyophilized Recombinant Protein	2 vials
Plate Seals	1 unit
Sample Diluent NS (ab193972)	1 x 50ml

内容	1 x 96 tests
SimpleStep Pre-Coated 96-Well Microplate (ab206978)	1 unit
Stop Solution	1 x 12ml
TMB Development Solution	1 x 12ml

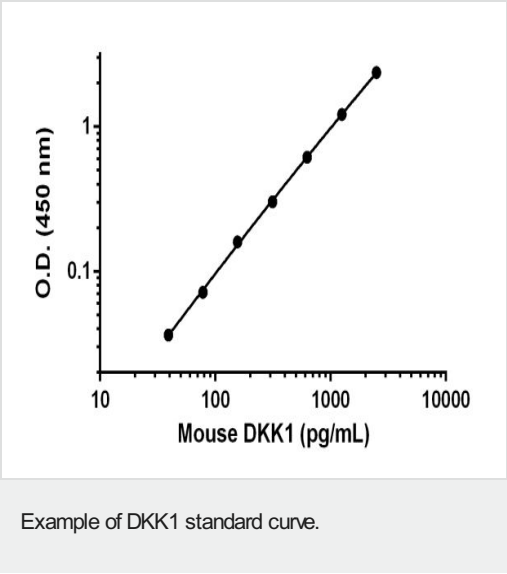
関連性

DKK1 is an inhibitor of the Wnt signaling pathway. Elevated levels of DKK1 in bone marrow plasma and peripheral blood is associated with the presence of osteolytic bone lesions in patients with multiple myeloma.

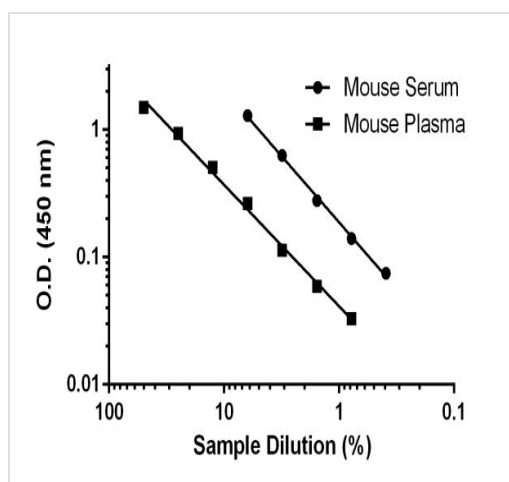
画像



Standard curve comparison between mouse DKK1 SimpleStep ELISA® kit and traditional ELISA kit from leading competitor. SimpleStep ELISA kit shows a 3-fold increase in sensitivity.

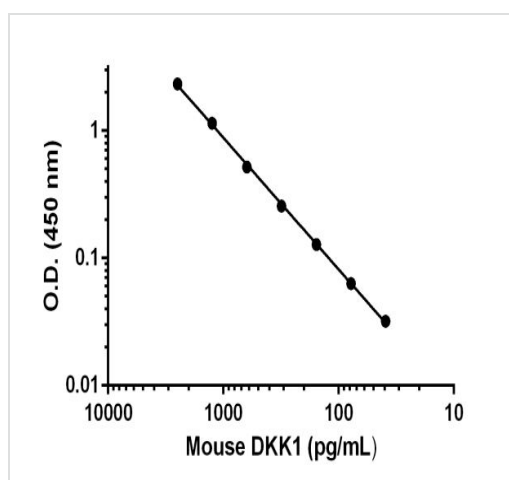


Background-subtracted data values (mean +/- SD) are graphed.



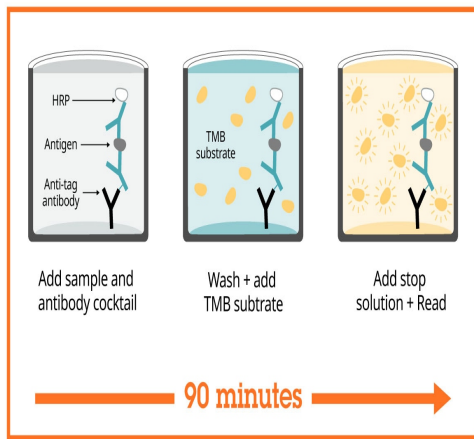
Background-subtracted data values (mean \pm SD, $n = 2$) are graphed.

Titration of mouse Serum and mouse plasma within the working range of the assay.



Background-subtracted data values (mean \pm SD, $n = 2$) are graphed.

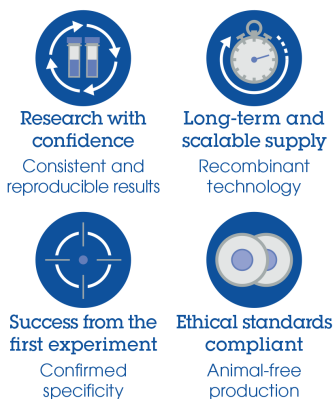
Titration of protein spiked cell culture media within the working range of the assay.



Sandwich ELISA - Mouse DKK1 ELISA Kit
(ab197746)

SimpleStep ELISA technology allows the formation of the antibody-antigen complex in one single step, reducing assay time to 90 minutes. Add samples or standards and antibody mix to wells all at once, incubate, wash, and add your final substrate. See protocol for a detailed step-by-step guide.

Powered by
recombinant antibodies



Sandwich ELISA - Mouse DKK1 ELISA Kit
(ab197746)

To learn more about the advantages of recombinant antibodies see [here](#).

Get more done with
SimpleStep ELISA



Sandwich ELISA - Mouse DKK1 ELISA Kit
(ab197746)

To learn more about the advantages of SimpleStep ELISA[®] kits see [here](#).

Please note: All products are "FOR RESEARCH USE ONLY. NOT FOR USE IN DIAGNOSTIC PROCEDURES"

Our Abpromise to you: Quality guaranteed and expert technical support

- Replacement or refund for products not performing as stated on the datasheet
- Valid for 12 months from date of delivery
- Response to your inquiry within 24 hours

- We provide support in Chinese, English, French, German, Japanese and Spanish
- Extensive multi-media technical resources to help you
- We investigate all quality concerns to ensure our products perform to the highest standards

If the product does not perform as described on this datasheet, we will offer a refund or replacement. For full details of the Abpromise, please visit <https://www.abcam.co.jp/abpromise> or contact our technical team.

Terms and conditions

- Guarantee only valid for products bought direct from Abcam or one of our authorized distributors