

## Mouse Cystatin C ELISA Kit ab201280

リコンビナント SimpleStep ELISA

**5 References** [画像数 8](#)

### 製品の概要

**製品名** Mouse Cystatin C ELISA Kit

**検出方法** Colorimetric

**再現性** Intra-Assay (同時再現性)

サンプル	N	平均値	SD	CV%
Overall	8			2.95%

Inter-Assay (日差再現性)

サンプル	N	平均値	SD	CV%
Overall	3			3.52%

**サンプルの種類** Cell culture supernatant, Urine, Serum, Tissue Extracts, Cit plasma

**アッセイタイプ** Sandwich (quantitative)

**検出感度** 5.25 pg/ml

**検出範囲** 23.4 pg/ml - 1500 pg/ml

**添加回収試験** 特定サンプルでの回収試験

サンプルの種類	平均 %	測定範囲
Urine	111	100% - 130%
Serum	97	95% - 100%
Cell culture media	93	88% - 97%
Cit plasma	102	102% - 102%

**全工程の試験時間** 1h 30m

**ステップ** One step assay

**種交差性** 交差種: Mouse

非交差種: Cow, Pig

## 製品の概要

Mouse Cystatin C ELISA Kit (ab201280) is a single-wash 90 min sandwich ELISA designed for the quantitative measurement of Cystatin C protein in cit plasma, serum, tissue extracts, urine, and cell culture supernatant. It uses our proprietary SimpleStep ELISA® technology. Quantitate Mouse Cystatin C with 5.25 pg/ml sensitivity.

SimpleStep ELISA® technology employs capture antibodies conjugated to an affinity tag that is recognized by the monoclonal antibody used to coat our SimpleStep ELISA® plates. This approach to sandwich ELISA allows the formation of the antibody-analyte sandwich complex in a single step, significantly reducing assay time. See the SimpleStep ELISA® protocol summary in the image section for further details. Our SimpleStep ELISA® technology provides several benefits:

- Single-wash protocol reduces assay time to 90 minutes or less
- High sensitivity, specificity and reproducibility from superior antibodies
- Fully validated in biological samples
- 96-wells plate breakable into 12 x 8 wells strips

A 384-well SimpleStep ELISA® microplate (**ab203359**) is available to use as an alternative to the 96-well microplate provided with SimpleStep ELISA® kits.

## 特記事項

Cystatin C, which belongs to the type II cystatin gene family, is a potent inhibitor of lysosomal proteinases. It is expressed in many organs of the body, and is an important extracellular inhibitor of cysteine proteases. As an inhibitor of cysteine proteinases, Cystatin C is thought to serve an important physiological role as a local regulator of this enzyme activity.

Abcam has not and does not intend to apply for the REACH Authorisation of customers' uses of products that contain European Authorisation list (Annex XIV) substances.

It is the responsibility of our customers to check the necessity of application of REACH Authorisation, and any other relevant authorisations, for their intended uses.

## 試験プラットフォーム

Microplate (12 x 8 well strips)

## 製品の特性

### 保存方法

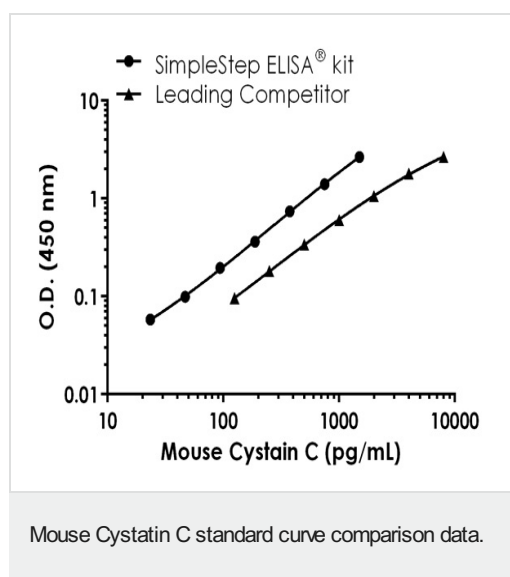
Store at +4°C. Please refer to protocols.

内容	1 x 96 tests	1 x 96 tests
10X Mouse Cystatin C Detector Antibody	1 x 600µl	1 x 600µl
10X Wash Buffer PT (ab206977)	1 x 20ml	1 x 20ml
50X Cell Extraction Enhancer Solution (ab193971)	1 x 1ml	1 x 1ml
5X Cell Extraction Buffer PTR (ab193970)	1 x 10ml	1 x 10ml
Antibody Diluent CP2	1 x 6ml	1 x 6ml
Mouse Cystatin C Capture Antibody (lyophilized)	1 vial	1 vial

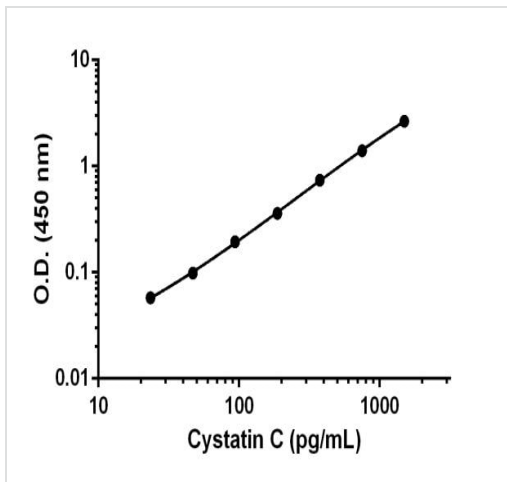
内容	1 x 96 tests	1 x 96 tests
Mouse Cystatin C Lyophilized Recombinant Protein	2 vials	2 vials
Plate Seals	1 unit	1 unit
Sample Diluent NS (ab193972)	1 x 50ml	1 x 50ml
SimpleStep Pre-Coated 96-Well Microplate (ab206978)	1 unit	1 unit
Stop Solution	1 x 12ml	1 x 12ml
TMB Development Solution	1 x 12ml	1 x 12ml

<b>機能</b>	As an inhibitor of cysteine proteinases, this protein is thought to serve an important physiological role as a local regulator of this enzyme activity.
<b>組織特異性</b>	Expressed in submandibular and sublingual saliva but not in parotid saliva (at protein level). Expressed in various body fluids, such as the cerebrospinal fluid and plasma. Expressed in highest levels in the epididymis, vas deferens, brain, thymus, and ovary and the lowest in the submandibular gland.
<b>関連疾患</b>	Amyloidosis 6 Macular degeneration, age-related, 11
<b>配列類似性</b>	Belongs to the cystatin family.
<b>翻訳後修飾</b>	The Thr-25 variant is O-glycosylated with a core 1 or possibly core 8 glycan. The signal peptide of the O-glycosylated Thr-25 variant is cleaved between Ala-20 and Val-21.
<b>細胞内局在</b>	Secreted.

## 画像

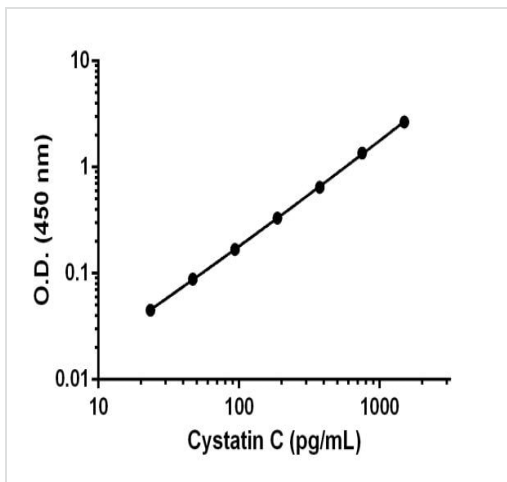


Standard curve comparison between mouse Cystatin C SimpleStep ELISA<sup>®</sup> kit and traditional ELISA kit from leading competitor. SimpleStep ELISA kit shows comparable sensitivity.



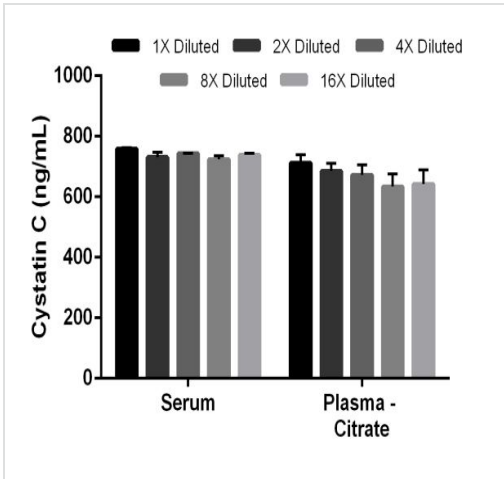
Background-subtracted data values (mean +/- SD) are graphed.

Example of Cystatin C standard curve in Sample Diluent NS.



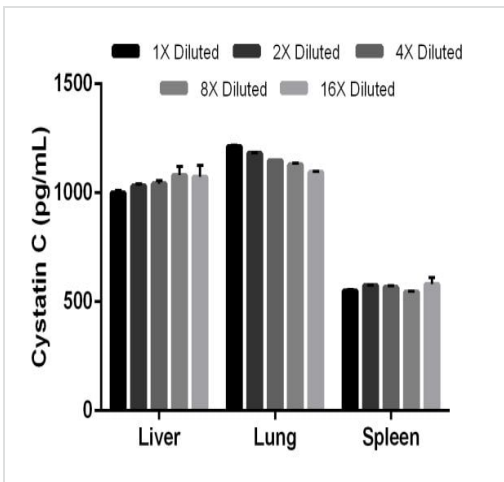
Background-subtracted data values (mean +/- SD) are graphed.

Example of Cystatin C standard curve in 1X Cell Extraction Buffer PTR.



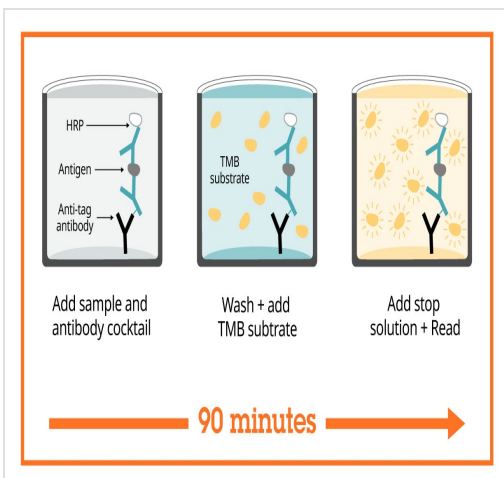
Titration of mouse serum and citrate plasma within the working range of the assay.

The initial 1X dilution was 0.1%. Interpolated data values (mean +/- SD, n = 2) are graphed.



Titration of mouse Cystatin C expression in liver, lung, and spleen tissue extracts.

The 1X dilution for liver was an extract load of 500 µg/mL, and an extract load of 100 µg/mL for the lung and spleen extracts.



SimpleStep ELISA technology allows the formation of the antibody-antigen complex in one single step, reducing assay time to 90 minutes. Add samples or standards and antibody mix to wells all at once, incubate, wash, and add your final substrate. See protocol for a detailed step-by-step guide.

Sandwich ELISA - Mouse Cystatin C ELISA Kit (ab201280)

Powered by  
recombinant antibodies



**Research with confidence**  
Consistent and reproducible results



**Long-term and scalable supply**  
Recombinant technology



**Success from the first experiment**  
Confirmed specificity



**Ethical standards compliant**  
Animal-free production

Sandwich ELISA - Mouse Cystatin C ELISA Kit  
(ab201280)

To learn more about the advantages of recombinant antibodies see [here](#).

Get more done with  
SimpleStep ELISA



**Easy to use**  
Single-wash 90-minute protocol



**Flexible**  
Matched antibody pairs available



**Precision antibodies**  
High sensitivity, specificity and reproducibility



**Scalable**  
Now in 10-pack and 384-well formats

Sandwich ELISA - Mouse Cystatin C ELISA Kit  
(ab201280)

To learn more about the advantages of SimpleStep ELISA<sup>®</sup> kits see [here](#).

**Please note:** All products are "FOR RESEARCH USE ONLY. NOT FOR USE IN DIAGNOSTIC PROCEDURES"

### Our Abpromise to you: Quality guaranteed and expert technical support

- Replacement or refund for products not performing as stated on the datasheet
- Valid for 12 months from date of delivery
- Response to your inquiry within 24 hours
- We provide support in Chinese, English, French, German, Japanese and Spanish
- Extensive multi-media technical resources to help you
- We investigate all quality concerns to ensure our products perform to the highest standards

If the product does not perform as described on this datasheet, we will offer a refund or replacement. For full details of the Abpromise, please visit <https://www.abcam.co.jp/abpromise> or contact our technical team.

## Terms and conditions

---

- Guarantee only valid for products bought direct from Abcam or one of our authorized distributors