

Mouse CXCL16 ELISA Kit ab197744

リコンビナント SimpleStep ELISA

1 References 画像数 8

製品の概要

製品名	Mouse CXCL16 ELISA Kit				
検出方法	Colorimetric				
再現性	Intra-Assay (同時再現性)				
サンプル		N	平均値	SD	CV%
RAW 264.7		5			6.3%
					Inter-Assay (日差再現性)
サンプル		N	平均値	SD	CV%
RAW 264.7		3			3.2%
サンプルの種類	Cell culture supernatant, Serum, Cit plasma				
アッセイタイプ	Sandwich (quantitative)				
検出感度	7.6 pg/ml				
検出範囲	31.25 pg/ml - 2000 pg/ml				
添加回収試験	特定サンプルでの回収試験				
サンプルの種類		平均 %		測定範囲	
Serum		99.9		84.8% - 112.5%	
Cell culture media		96.7		86% - 108.3%	
Cit plasma		90.5		84.2% - 95.8%	
全工程の試験時間	1h 30m				
ステップ	One step assay				
種交差性	交差種: Mouse 非交差種: Goat, Cow, Pig				
製品の概要	Mouse CXCL16 ELISA Kit (ab197744) is a single-wash 90 min sandwich ELISA designed for the				

quantitative measurement of CXCL16 protein in cell culture supernatant, cit plasma, and serum. It uses our proprietary SimpleStep ELISA® technology. Quantitate Mouse CXCL16 with 7.6 pg/ml sensitivity.

SimpleStep ELISA® technology employs capture antibodies conjugated to an affinity tag that is recognized by the monoclonal antibody used to coat our SimpleStep ELISA® plates. This approach to sandwich ELISA allows the formation of the antibody-analyte sandwich complex in a single step, significantly reducing assay time. See the SimpleStep ELISA® protocol summary in the image section for further details. Our SimpleStep ELISA® technology provides several benefits:

- Single-wash protocol reduces assay time to 90 minutes or less
- High sensitivity, specificity and reproducibility from superior antibodies
- Fully validated in biological samples
- 96-wells plate breakable into 12 x 8 wells strips

A 384-well SimpleStep ELISA® microplate (**ab203359**) is available to use as an alternative to the 96-well microplate provided with SimpleStep ELISA® kits.

#### 特記事項

CXCL16 is a chemokine. It induces a strong chemotactic response. It induces calcium mobilization. CXCL16 binds to CXCR6/Bonzo. CXCL16 also acts as a scavenger receptor on macrophages, which specifically binds to oxidized low density lipoprotein, suggesting that it may be involved in pathophysiology such as atherogenesis. CXCL16 is a plasma membrane protein.

#### 試験プラットフォーム

Microplate (12 x 8 well strips)

#### 製品の特性

#### 保存方法

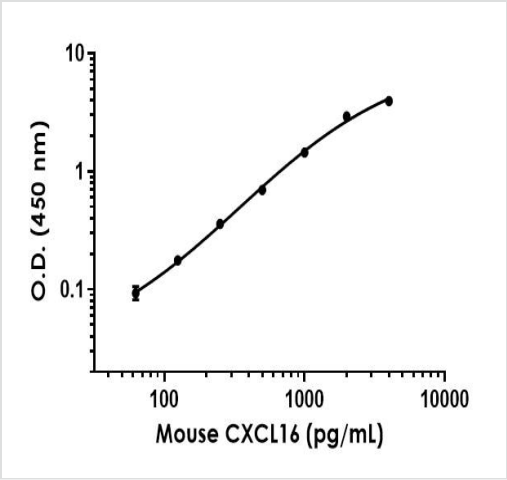
Store at +4°C. Please refer to protocols.

内容	1 x 96 tests
10X Mouse CXCL16 Capture Antibody	1 x 600µl
10X Mouse CXCL16 Detector Antibody	1 x 600µl
10X Wash Buffer PT (ab206977)	1 x 20ml
Antibody Diluent 4BI	1 x 6ml
Mouse CXCL16 Lyophilized Recombinant Protein	2 vials
Plate Seals	1 unit
Sample Diluent 25BS	1 x 20ml
Sample Diluent NS (ab193972)	1 x 50ml
SimpleStep Pre-Coated 96-Well Microplate (ab206978)	1 unit
Stop Solution	1 x 12ml

内容	1 x 96 tests
TMB Development Solution	1 x 12ml

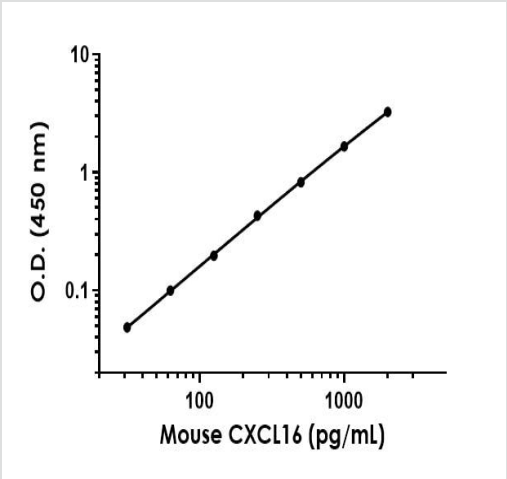
関連性	CXCL16 acts as a scavenger receptor on macrophages, which specifically binds to OxLDL (oxidized low density lipoprotein), suggesting that it may be involved in pathophysiology such as atherogenesis. It induces a strong chemotactic response and calcium mobilization. It binds to CXCR6/Bonzo.
細胞内局在	Cell Membrane and Secreted

画像



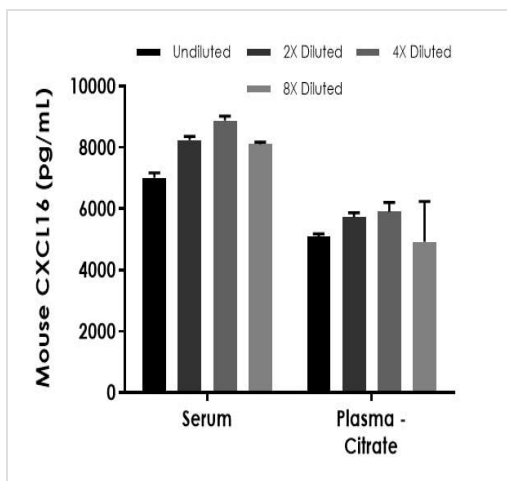
Example of CXCL16 standard curve prepared in Sample Diluent 25BS.

Background-subtracted data values (mean +/- SD) are graphed.



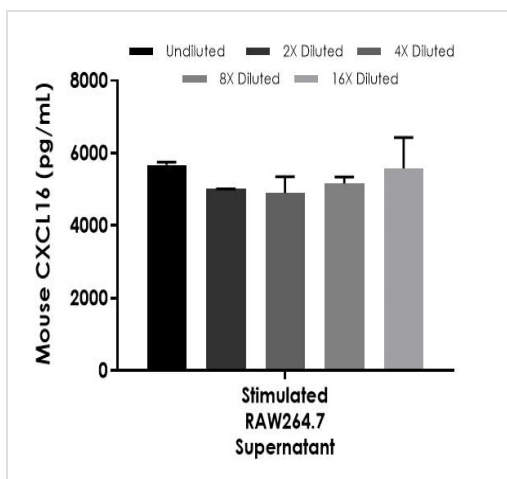
Example of CXCL16 standard curve prepared in Sample Diluent NS.

Background-subtracted data values (mean +/- SD) are graphed.



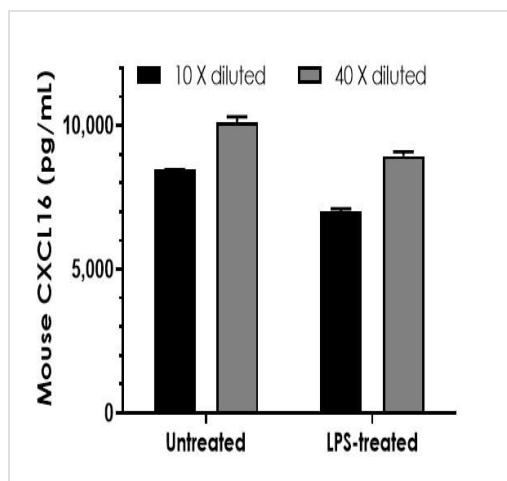
Interpolated concentrations of native CXCL16 in mouse serum and plasma (citrate) samples.

The concentrations of CXCL16 were measured in duplicates, interpolated from the CXCL16 standard curves and corrected for sample dilution. Undiluted samples are as follows: serum 10% and plasma (citrate) 10%. The interpolated dilution factor corrected values are plotted (mean  $\pm$  SD,  $n=2$ ).



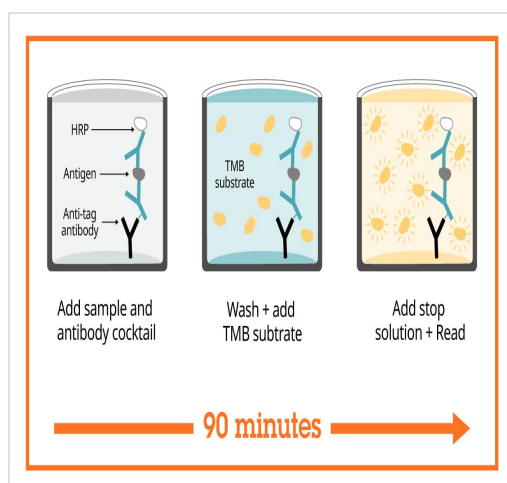
Interpolated concentrations of native CXCL16 in mouse LPS-treated RAW264.7 supernatant samples.

RAW 264.7 cells were 24 hour serum starved and continued to culture in the presence of 5  $\mu$ g/mL lipopolysaccharides (LPS) for 48 hours. The concentrations of CXCL16 were measured in duplicates, interpolated from the CXCL16 standard curves and corrected for sample dilution. Undiluted samples are as follows: RAW264.7 supernatant 20%. The interpolated dilution factor corrected values are plotted (mean  $\pm$  SD,  $n=2$ ).



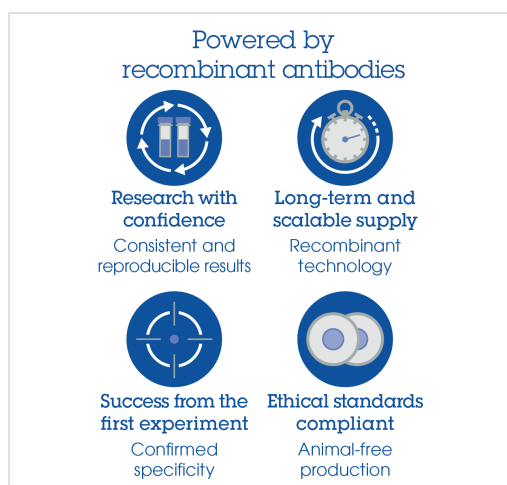
CXCL16 concentrations in unstimulated and LPS-stimulated RAW 264.7 cell culture supernatants.

RAW 264.7 cells were 24 hour serum starved and continued to culture either in the absence or in the presence of 5 µg/mL lipopolysaccharides (LPS) for 48 hours. Two dilutions (as indicated) of the cell culture supernatant samples were analyzed with this kit. Interpolated concentrations of CXCL16 adjusted for sample dilution are graphed in pg of CXCL16 per mL of supernatant (mean +/- SD, n = 2).



SimpleStep ELISA technology allows the formation of the antibody-antigen complex in one single step, reducing assay time to 90 minutes. Add samples or standards and antibody mix to wells all at once, incubate, wash, and add your final substrate. See protocol for a detailed step-by-step guide.

Sandwich ELISA - Mouse CXCL16 ELISA Kit  
(ab197744)



Sandwich ELISA - Mouse CXCL16 ELISA Kit  
(ab197744)

To learn more about the advantages of recombinant antibodies see [here](#).

**Get more done with  
SimpleStep ELISA**



**Easy to use**

Single-wash 90-minute  
protocol



**Flexible**

Matched antibody pairs  
available



**Precision antibodies**

High sensitivity, specificity  
and reproducibility



**Scalable**

Now in 10-pack and  
384-well formats

Sandwich ELISA - Mouse CXCL16 ELISA Kit  
(ab197744)

To learn more about the advantages of SimpleStep ELISA® kits  
see [here](#).

**Please note:** All products are "FOR RESEARCH USE ONLY. NOT FOR USE IN DIAGNOSTIC PROCEDURES"

### Our Abpromise to you: Quality guaranteed and expert technical support

---

- Replacement or refund for products not performing as stated on the datasheet
- Valid for 12 months from date of delivery
- Response to your inquiry within 24 hours
- We provide support in Chinese, English, French, German, Japanese and Spanish
- Extensive multi-media technical resources to help you
- We investigate all quality concerns to ensure our products perform to the highest standards

If the product does not perform as described on this datasheet, we will offer a refund or replacement. For full details of the Abpromise, please visit <https://www.abcam.co.jp/abpromise> or contact our technical team.

### Terms and conditions

---

- Guarantee only valid for products bought direct from Abcam or one of our authorized distributors