

Mouse alpha 1 acid Glycoprotein ELISA Kit ab264605

リコンビナント SimpleStep ELISA

画像数 7

製品の概要

製品名 Mouse alpha 1 acid Glycoprotein ELISA Kit

検出方法 Colorimetric

再現性 Intra-Assay (同時再現性)

サンプル	N	平均値	SD	CV%
Serum	8			3.2%

Inter-Assay (日差再現性)

サンプル	N	平均値	SD	CV%
Serum	3			3.4%

サンプルの種類 Cell culture supernatant, Urine, Serum, Hep Plasma, EDTA Plasma, Cit plasma

アッセイタイプ Sandwich (quantitative)

検出感度 111.4 pg/ml

検出範囲 156.25 pg/ml - 10000 pg/ml

添加回収試験 特定サンプルでの回収試験

サンプルの種類	平均 %	測定範囲
Cell culture supernatant	103	98% - 112%
Serum	104	99% - 108%
Hep Plasma	108	100% - 116%
EDTA Plasma	111	108% - 114%
Cit plasma	103	94% - 112%

全工程の試験時間 1h 30m

ステップ One step assay

種交差性

交差種: Mouse

製品の概要

Mouse alpha 1 acid Glycoprotein ELISA Kit (ab264605) is a single-wash 90 min sandwich ELISA designed for the quantitative measurement of alpha 1 acid Glycoprotein protein in cell culture supernatant, cit plasma, edta plasma, hep plasma, serum, and urine. It uses our proprietary SimpleStep ELISA® technology. Quantitate Mouse alpha 1 acid Glycoprotein with 111.4 pg/ml sensitivity.

SimpleStep ELISA® technology employs capture antibodies conjugated to an affinity tag that is recognized by the monoclonal antibody used to coat our SimpleStep ELISA® plates. This approach to sandwich ELISA allows the formation of the antibody-analyte sandwich complex in a single step, significantly reducing assay time. See the SimpleStep ELISA® protocol summary in the image section for further details. Our SimpleStep ELISA® technology provides several benefits:

- Single-wash protocol reduces assay time to 90 minutes or less
- High sensitivity, specificity and reproducibility from superior antibodies
- Fully validated in biological samples
- 96-wells plate breakable into 12 x 8 wells strips

A 384-well SimpleStep ELISA® microplate (**ab203359**) is available to use as an alternative to the 96-well microplate provided with SimpleStep ELISA® kits.

特記事項

Alpha 1 acid glycoprotein 1 (ORM1) is a plasma protein involved in acute inflammation. Alpha 1 acid glycoprotein is a transport protein for various cellular ligands and synthetic drugs. Alpha 1 acid glycoprotein is expressed by the liver and is induced by glucocorticoids, IL-1 and IL-6.

試験プラットフォーム

Pre-coated microplate (12 x 8 well strips)

製品の特性

保存方法

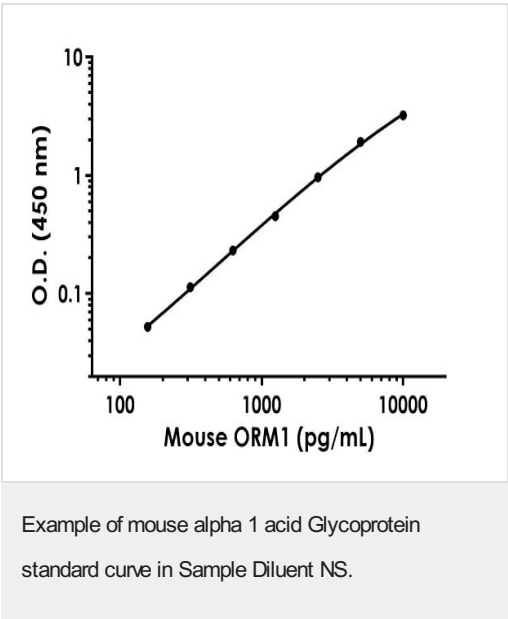
Store at +4°C. Please refer to protocols.

内容	1 x 96 tests
10X Mouse alpha 1 acid Glycoprotein Capture Antibody	1 x 600µl
10X Mouse alpha 1 acid Glycoprotein Detector Antibody	1 x 600µl
10X Wash Buffer PT (ab206977)	1 x 20ml
Antibody Diluent 4BR	1 x 6ml
Mouse alpha 1 acid Glycoprotein Lyophilized Recombinant Protein	2 vials
Plate Seals	1 unit
Sample Diluent NS (ab193972)	1 x 50ml
SimpleStep Pre-Coated 96-Well Microplate (ab206978)	1 unit
Stop Solution	1 x 12ml

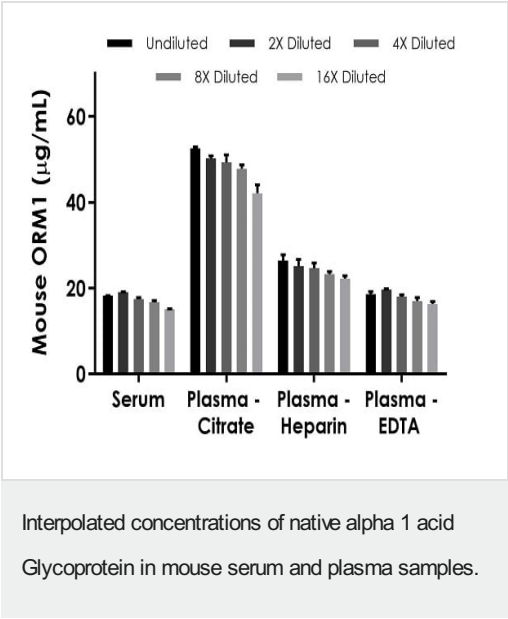
内容	1 x 96 tests
TMB Development Solution	1 x 12ml

機能	Appears to function in modulating the activity of the immune system during the acute-phase reaction.
組織特異性	Expressed by the liver and secreted in plasma.
配列類似性	Belongs to the calycin superfamily. Lipocalin family.
細胞内局在	Secreted.

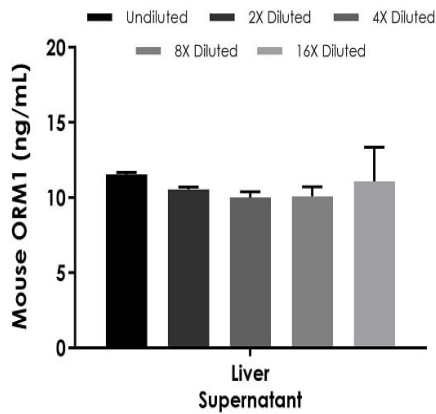
画像



The alpha 1 acid Glycoprotein standard curve was prepared as described in Section 10. Raw data values are shown in the table. Background-subtracted data values (mean +/- SD) are graphed.

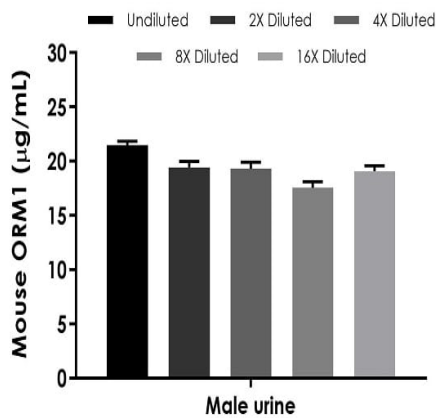


The concentrations of alpha 1 acid Glycoprotein were measured in duplicates, interpolated from the alpha 1 acid Glycoprotein standard curves and corrected for sample dilution. Undiluted samples are as follows: serum 1: 2,000, plasma (citrate) 1: 8,000, plasma (heparin) 1: 4,000, and plasma (EDTA) 1: 2,000. The interpolated dilution factor corrected values are plotted (mean +/- SD, n=2). The mean alpha 1 acid Glycoprotein concentration was determined to be 16.84 µg/mL in serum, 47.40 µg/mL in plasma (citrate), 24.08 µg/ml in plasma (heparin), and 17.47 µg/ml in plasma (EDTA).



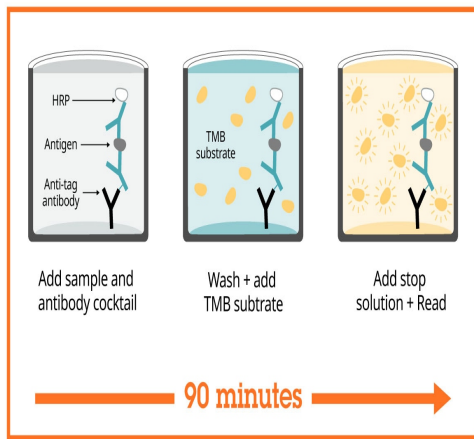
Interpolated concentrations of native alpha 1 acid Glycoprotein in mouse liver tissue culture supernatant samples.

The concentrations of alpha 1 acid Glycoprotein were measured in duplicates, interpolated from the alpha 1 acid Glycoprotein standard curves and corrected for sample dilution. Undiluted samples are as follows: mouse liver supernatant 50%. The interpolated dilution factor corrected values are plotted (mean \pm SD, n=2). The mean alpha 1 acid Glycoprotein concentration was determined to be 10.66 ng/mL in liver supernatant.



Interpolated concentrations of native alpha 1 acid Glycoprotein in male mouse urine samples.

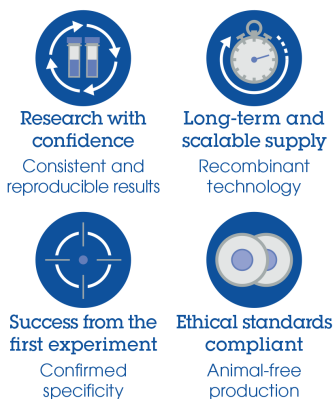
The concentrations of alpha 1 acid Glycoprotein were measured in duplicates, interpolated from the alpha 1 acid Glycoprotein standard curves and corrected for sample dilution. Undiluted samples are as follows: male mouse urine 1: 256. The interpolated dilution factor corrected values are plotted (mean \pm SD, n=2). The mean alpha 1 acid Glycoprotein concentration was determined to be 1.94 µg/mL in male mouse urine.



Sandwich ELISA - Mouse alpha 1 acid Glycoprotein
ELISA Kit (ab264605)

SimpleStep ELISA technology allows the formation of the antibody-antigen complex in one single step, reducing assay time to 90 minutes. Add samples or standards and antibody mix to wells all at once, incubate, wash, and add your final substrate. See protocol for a detailed step-by-step guide.

Powered by
recombinant antibodies



Sandwich ELISA - Mouse alpha 1 acid Glycoprotein
ELISA Kit (ab264605)

To learn more about the advantages of recombinant antibodies see [here](#).

Get more done with
SimpleStep ELISA



Sandwich ELISA - Mouse alpha 1 acid Glycoprotein
ELISA Kit (ab264605)

To learn more about the advantages of SimpleStep ELISA[®] kits see [here](#).

Please note: All products are "FOR RESEARCH USE ONLY. NOT FOR USE IN DIAGNOSTIC PROCEDURES"

Our Abpromise to you: Quality guaranteed and expert technical support

- Replacement or refund for products not performing as stated on the datasheet
- Valid for 12 months from date of delivery
- Response to your inquiry within 24 hours

- We provide support in Chinese, English, French, German, Japanese and Spanish
- Extensive multi-media technical resources to help you
- We investigate all quality concerns to ensure our products perform to the highest standards

If the product does not perform as described on this datasheet, we will offer a refund or replacement. For full details of the Abpromise, please visit <https://www.abcam.co.jp/abpromise> or contact our technical team.

Terms and conditions

- Guarantee only valid for products bought direct from Abcam or one of our authorized distributors