

Human Von Willebrand Factor ELISA Kit (VWF) ab108918

[23 References](#) [画像数 2](#)

製品の概要

製品名 Human Von Willebrand Factor ELISA Kit (VWF)

検出方法 Colorimetric

再現性 Intra-Assay (同時再現性)

サンプル	N	平均値	SD	CV%
Overall				5.6%

Inter-Assay (日差再現性)

サンプル	N	平均値	SD	CV%
Overall				9.6%

サンプルの種類 Cell culture supernatant, Serum, Plasma

アッセイタイプ Sandwich (quantitative)

検出感度 = 0.38 mIU/ml

検出範囲 0.625 mIU/ml - 40 mIU/ml

添加回収試験 98 %

全工程の試験時間 5h 00m

ステップ Multiple steps standard assay

種交差性 交差種: Human

製品の概要

Human Von Willebrand Factor (VWF) *in vitro* ELISA (Enzyme-Linked Immunosorbent Assay) kit is designed for the quantitative measurement of Human Von Willebrand Factor in plasma, serum, and cell culture supernatants.

A Von Willebrand Factor specific antibody has been precoated onto 96-well plates and blocked. Standards or test samples are added to the wells and subsequently a Von Willebrand Factor specific biotinylated detection antibody is added and then followed by washing with wash buffer. Streptavidin-Peroxidase Conjugate is added and unbound conjugates are washed away with wash buffer. TMB is then used to visualize Streptavidin-Peroxidase enzymatic reaction. TMB is catalyzed by Streptavidin-Peroxidase to produce a blue color product that changes into yellow after adding acidic stop solution. The density of yellow coloration is directly proportional to the amount of Von Willebrand Factor captured in plate.

The entire kit may be stored at -20°C for long term storage before reconstitution - Avoid repeated freeze-thaw cycles.

試験プラットフォーム

Microplate

製品の特性

保存方法

Store at -20°C. Please refer to protocols.

内容	1 x 96 tests
100X Streptavidin-Peroxidase Conjugate	1 x 80µl
10X Diluent N Concentrate	1 x 30ml
20X Wash Buffer Concentrate	2 x 30ml
100X Biotinylated Human Von Willebrand Factor Antibody	1 x 60µl
Chromogen Substrate	1 x 7ml
Sealing Tapes	3 units
Stop Solution	1 x 11ml
Von Willebrand Factor Microplate (12 x 8 well strips)	1 unit
Von Willebrand Factor Standard	1 vial

機能

Important in the maintenance of hemostasis, it promotes adhesion of platelets to the sites of vascular injury by forming a molecular bridge between sub-endothelial collagen matrix and platelet-surface receptor complex GPIb-IX-V. Also acts as a chaperone for coagulation factor VIII, delivering it to the site of injury, stabilizing its heterodimeric structure and protecting it from premature clearance from plasma.

組織特異性

Plasma.

関連疾患

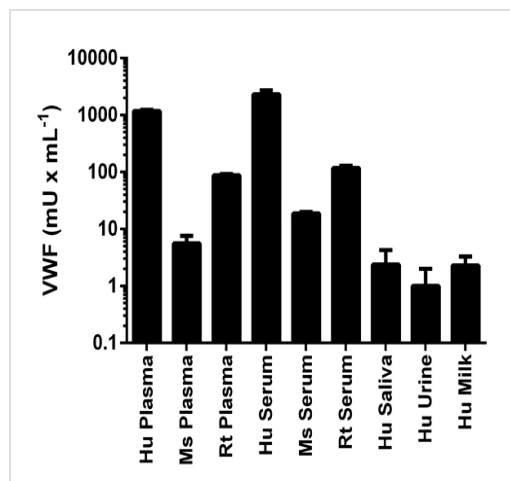
Defects in VWF are the cause of von Willebrand disease (VWD) [MIM:277480]. VWD defines a group of hemorrhagic disorders in which the von Willebrand factor is either quantitatively or qualitatively abnormal resulting in altered platelet function. Symptoms vary depending on severity and disease type but may include prolonged bleeding time, deficiency of factor VIII and impaired platelet adhesion. Type I von Willebrand disease is the most common form and is characterized by partial quantitative plasmatic deficiency of an otherwise structurally and functionally normal Willebrand factor; type II is associated with a qualitative deficiency and functional anomalies of the Willebrand factor; type III is the most severe form and is characterized by total or near-total absence of Willebrand factor in the plasma and cellular compartments, also leading to a profound deficiency of plasmatic factor VIII.

配列類似性

Contains 1 CTCK (C-terminal cystine knot-like) domain.
Contains 4 TIL (trypsin inhibitory-like) domains.
Contains 3 VWFA domains.
Contains 3 VWFC domains.
Contains 4 VWFD domains.

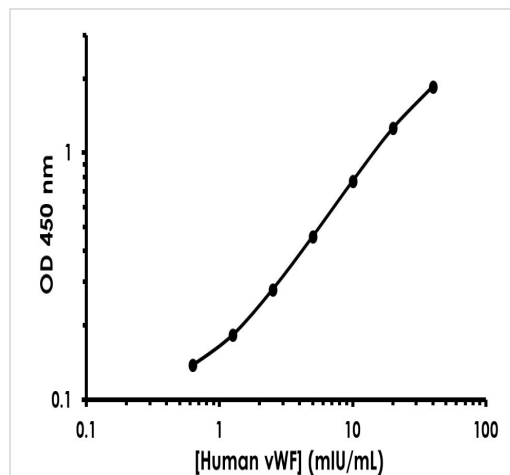
ドメイン	The von Willebrand antigen 2 is required for multimerization of VWF and for its targeting to storage granules.
翻訳後修飾	All cysteine residues are involved in intrachain or interchain disulfide bonds. N- and O-glycosylated.
細胞内局在	Secreted. Secreted > extracellular space > extracellular matrix. Localized to storage granules.

画像



VWF measured in biological fluids with background signal subtracted (duplicates +/- SD). There is limited cross-reactivity in mouse (< 2%) and rat samples (< 15%).

Sandwich ELISA - Von Willebrand Factor (VWF)
Human ELISA Kit (ab108918)



Example von Willebrand Factor standard curve – data provided for demonstration purposes only.

Human von Willebrand Factor ELISA Kit example
standard curve

Please note: All products are "FOR RESEARCH USE ONLY. NOT FOR USE IN DIAGNOSTIC PROCEDURES"

Our Promise to you: Quality guaranteed and expert technical support

- Replacement or refund for products not performing as stated on the datasheet

- Valid for 12 months from date of delivery
- Response to your inquiry within 24 hours

- We provide support in Chinese, English, French, German, Japanese and Spanish
- Extensive multi-media technical resources to help you
- We investigate all quality concerns to ensure our products perform to the highest standards

If the product does not perform as described on this datasheet, we will offer a refund or replacement. For full details of the Abpromise, please visit <https://www.abcam.co.jp/abpromise> or contact our technical team.

Terms and conditions

- Guarantee only valid for products bought direct from Abcam or one of our authorized distributors