

Human Vitronectin/S-Protein ELISA Kit ab234577

リコンビナント SimpleStep ELISA®

画像数 5

製品の概要

製品名	Human Vitronectin/S-Protein ELISA Kit
検出方法	Colorimetric
再現性	Intra-Assay (同時再現性)

サンプル	N	平均値	SD	CV%
Rec protein	6			3%

サンプルの種類	Serum
アッセイタイプ	Sandwich (quantitative)
検出感度	19.9 pg/ml
検出範囲	0.06 ng/ml - 4 ng/ml
添加回収試験	特定サンプルでの回収試験

サンプルの種類	平均 %	測定範囲
Serum	114.9	107% - 119.2%

全工程の試験時間	1h 30m
ステップ	One step assay
種交差性	交差種: Human

製品の概要

Human Vitronectin/S-Protein ELISA Kit (ab234577) is a single-wash 90 min sandwich ELISA designed for the quantitative measurement of Vitronectin/S-Protein protein in serum. It uses our proprietary SimpleStep ELISA® technology. Quantitate Human Vitronectin/S-Protein with 19.9 pg/ml sensitivity.

SimpleStep ELISA® technology employs capture antibodies conjugated to an affinity tag that is recognized by the monoclonal antibody used to coat our SimpleStep ELISA® plates. This approach to sandwich ELISA allows the formation of the antibody-analyte sandwich complex in a single step, significantly reducing assay time. See the SimpleStep ELISA® protocol summary in the image section for further details. Our SimpleStep ELISA® technology provides several benefits:

- Single-wash protocol reduces assay time to 90 minutes or less
- High sensitivity, specificity and reproducibility from superior antibodies
- Fully validated in biological samples
- 96-wells plate breakable into 12 x 8 wells strips

A 384-well SimpleStep ELISA® microplate (**ab203359**) is available to use as an alternative to the 96-well microplate provided with SimpleStep ELISA® kits.

特記事項

Abcam has not and does not intend to apply for the REACH Authorisation of customers' uses of products that contain European Authorisation list (Annex XIV) substances. It is the responsibility of our customers to check the necessity of application of REACH Authorisation, and any other relevant authorisations, for their intended uses.

試験プラットフォーム

Pre-coated microplate (12 x 8 well strips)

製品の特性

保存方法

Store at +4°C. Please refer to protocols.

内容	1 x 96 tests
10X Human Vitronectin/S-Protein Capture Antibody	1 x 600µl
10X Human Vitronectin/S-Protein Detector Antibody	1 x 600µl
10X Wash Buffer PT (ab206977)	1 x 20ml
50X Cell Extraction Enhancer Solution (ab193971)	1 x 1ml
5X Cell Extraction Buffer PTR (ab193970)	1 x 10ml
Antibody Diluent 4BI	1 x 6ml
Human Vitronectin/S-Protein Lyophilized Recombinant Protein	2 vials
Plate Seals	1 unit
Sample Diluent NS (ab193972)	1 x 12ml
SimpleStep Pre-Coated 96-Well Microplate (ab206978)	1 unit
Stop Solution	1 x 12ml
TMB Development Solution	1 x 12ml

機能

Vitronectin is a cell adhesion and spreading factor found in serum and tissues. Vitronectin interact with glycosaminoglycans and proteoglycans. Is recognized by certain members of the integrin family and serves as a cell-to-substrate adhesion molecule. Inhibitor of the membrane-damaging effect of the terminal cytolytic complement pathway.

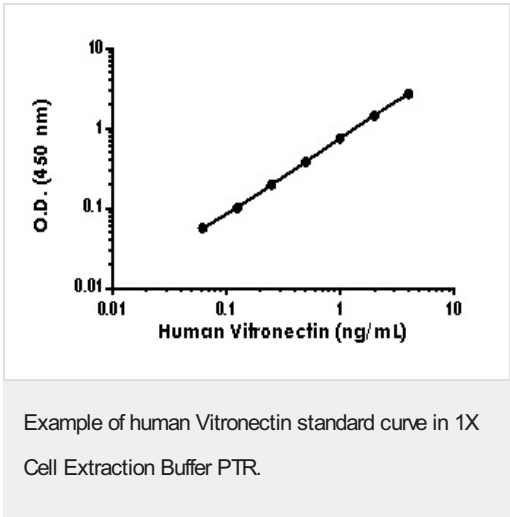
Somatomedin-B is a growth hormone-dependent serum factor with protease-inhibiting activity.

組織特異性

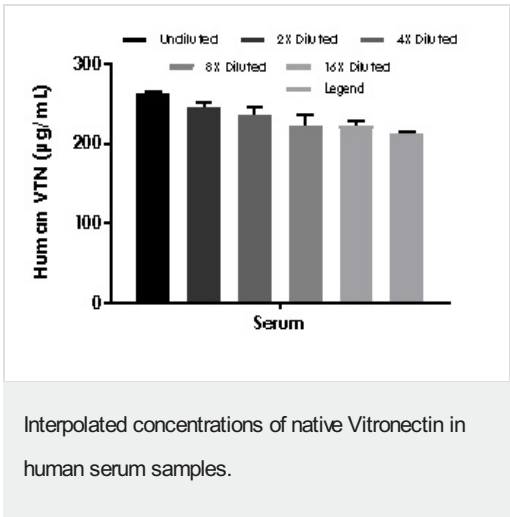
Plasma.

配列類似性	<p>Contains 4 hemopexin repeats.</p> <p>Contains 1 SMB (somatomedin-B) domain.</p>
ドメイン	<p>The SMB domain mediates interaction with SERPINE1/PAI1. The heparin-binding domain mediates interaction with insulin.</p>
翻訳後修飾	<p>Sulfated on 2 tyrosine residues.</p> <p>N- and O-glycosylated.</p> <p>Phosphorylation on Thr-69 and Thr-76 favors cell adhesion and spreading.</p> <p>It has been suggested that the active SMB domain may be permitted considerable disulfide bond heterogeneity or variability, thus two alternate disulfide patterns based on 3D structures are described with 1 disulfide bond conserved in both.</p> <p>Phosphorylation sites are present in the extracellular medium.</p>
細胞内局在	<p>Secreted, extracellular space.</p>

画像



The Vitronectin standard curve was prepared as described in Section 10.



The concentrations of Vitronectin were measured in duplicates, interpolated from the Vitronectin standard curves and corrected for sample dilution. The interpolated dilution factor corrected values are plotted (mean +/- SD, n=2). The mean Vitronectin concentration was determined to be 234.2 µg/mL in serum.

Powered by
recombinant antibodies



Research with confidence
Consistent and reproducible results



Long-term and scalable supply
Recombinant technology



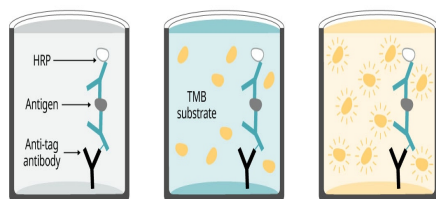
Success from the first experiment
Confirmed specificity



Ethical standards compliant
Animal-free production

Sandwich ELISA - Human Vitronectin/S-Protein
ELISA Kit (ab234577)

To learn more about the advantages of recombinant antibodies see [here](#).



Add sample and
antibody cocktail

Wash + add
TMB substrate

Add stop
solution + Read

90 minutes

SimpleStep ELISA technology allows the formation of the antibody-antigen complex in one single step, reducing assay time to 90 minutes. Add samples or standards and antibody mix to wells all at once, incubate, wash, and add your final substrate. See protocol for a detailed step-by-step guide.

Sandwich ELISA - Human Vitronectin/S-Protein
ELISA Kit (ab234577)

**Get more done with
SimpleStep ELISA**



Easy to use
Single-wash 90-minute
protocol



Flexible
Matched antibody pairs
available



Precision antibodies
High sensitivity, specificity
and reproducibility



Scalable
Now in 10-pack and
384-well formats

Sandwich ELISA - Human Vitronectin/S-Protein
ELISA Kit (ab234577)

To learn more about the advantages of SimpleStep ELISA® kits
see [here](#).

Please note: All products are "FOR RESEARCH USE ONLY. NOT FOR USE IN DIAGNOSTIC PROCEDURES"

Our Abpromise to you: Quality guaranteed and expert technical support

- Replacement or refund for products not performing as stated on the datasheet
- Valid for 12 months from date of delivery
- Response to your inquiry within 24 hours
- We provide support in Chinese, English, French, German, Japanese and Spanish
- Extensive multi-media technical resources to help you
- We investigate all quality concerns to ensure our products perform to the highest standards

If the product does not perform as described on this datasheet, we will offer a refund or replacement. For full details of the Abpromise, please visit <https://www.abcam.co.jp/abpromise> or contact our technical team.

Terms and conditions

- Guarantee only valid for products bought direct from Abcam or one of our authorized distributors