

### Human VEGF R3 ELISA Kit ab252350

リコンビナント SimpleStep ELISA

画像数 6

#### 製品の概要

製品名 Human VEGF R3 ELISA Kit

検出方法 Colorimetric

再現性 Intra-Assay (同時再現性)

サンプル	N	平均値	SD	CV%
Serum	8			2.3%

Inter-Assay (日差再現性)

サンプル	N	平均値	SD	CV%
Serum	3			3%

サンプルの種類 Serum, Cell culture media, Hep Plasma, EDTA Plasma, Cit plasma

アッセイタイプ Sandwich (quantitative)

検出感度 89.6 pg/ml

検出範囲 218.8 pg/ml - 14000 pg/ml

添加回収試験 特定サンプルでの回収試験

サンプルの種類	平均 %	測定範囲
Serum	96	88% - 101%
Cell culture media	103	98% - 105%
Hep Plasma	106	104% - 107%
EDTA Plasma	96	80% - 106%
Cit plasma	91	82% - 106%

全工程の試験時間 1h 30m

ステップ One step assay

**種交差性**

交差種: Human

非交差種: Cow

**製品の概要**

Human VEGF R3 ELISA Kit (ab252350) is a single-wash 90 min sandwich ELISA designed for the quantitative measurement of VEGF R3 protein in cell culture media, cit plasma, edta plasma, hep plasma, and serum. It uses our proprietary SimpleStep ELISA® technology. Quantitate Human VEGF R3 with 89.6 pg/ml sensitivity.

SimpleStep ELISA® technology employs capture antibodies conjugated to an affinity tag that is recognized by the monoclonal antibody used to coat our SimpleStep ELISA® plates. This approach to sandwich ELISA allows the formation of the antibody-analyte sandwich complex in a single step, significantly reducing assay time. See the SimpleStep ELISA® protocol summary in the image section for further details. Our SimpleStep ELISA® technology provides several benefits:

- Single-wash protocol reduces assay time to 90 minutes or less
- High sensitivity, specificity and reproducibility from superior antibodies
- Fully validated in biological samples
- 96-wells plate breakable into 12 x 8 wells strips

A 384-well SimpleStep ELISA® microplate (**ab203359**) is available to use as an alternative to the 96-well microplate provided with SimpleStep ELISA® kits.

**試験プラットフォーム**

Pre-coated microplate (12 x 8 well strips)

**製品の特性****保存方法**

Store at +4°C. Please refer to protocols.

内容	1 x 96 tests
10X Human VEGF R3 Capture Antibody	1 x 600µl
10X Human VEGF R3 Detector Antibody	1 x 600µl
10X Wash Buffer PT (ab206977)	1 x 20ml
Antibody Diluent 4BI	1 x 6ml
Human VEGF R3 Lyophilized Recombinant Protein	2 vials
Plate Seals	1 unit
Sample Diluent NS (ab193972)	1 x 50ml
SimpleStep Pre-Coated 96-Well Microplate (ab206978)	1 unit
Stop Solution	1 x 12ml
TMB Development Solution	1 x 12ml

**機能**

Receptor for VEGFC. Has a tyrosine-protein kinase activity.

**組織特異性**

Placenta, lung, heart, and kidney, does not seem to be expressed in pancreas and brain.

**関連疾患**

Defects in FLT4 are the cause of lymphedema hereditary type 1A (LMPH1A) [MIM:153100]; also known as Nonne-Milroy lymphedema or Milroy disease. Hereditary lymphedema is a chronic disabling condition which results in swelling of the extremities due to altered lymphatic flow. Patients with lymphedema suffer from recurrent local infections and physical impairment. Note=Defects in FLT4 are found in juvenile hemangioma. Juvenile hemangiomas are the most common tumors of infancy, occurring as many as 10% of all births. These benign vascular lesions enlarge rapidly during the first year of life by hyperplasia of endothelial cells and attendant pericytes, and then spontaneously involute over a period of years, leaving loose fibrofatty tissue.

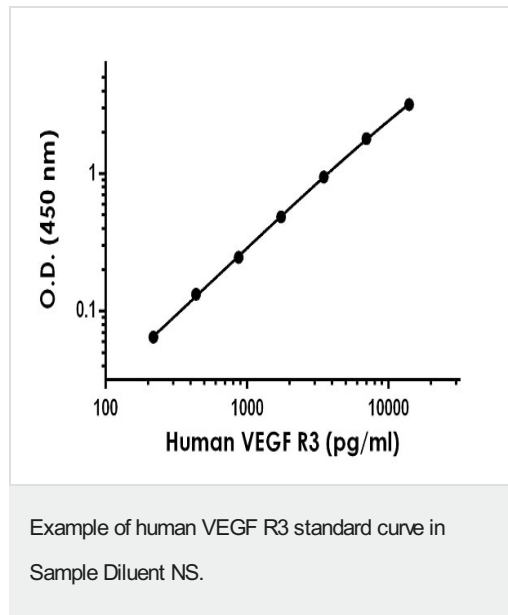
**配列類似性**

Belongs to the protein kinase superfamily. Tyr protein kinase family. CSF-1/PDGF receptor subfamily.  
Contains 7 Ig-like C2-type (immunoglobulin-like) domains.  
Contains 1 protein kinase domain.

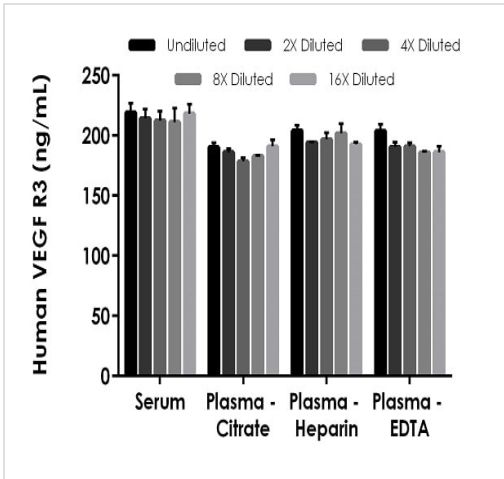
**細胞内局在**

Membrane.

**画像**

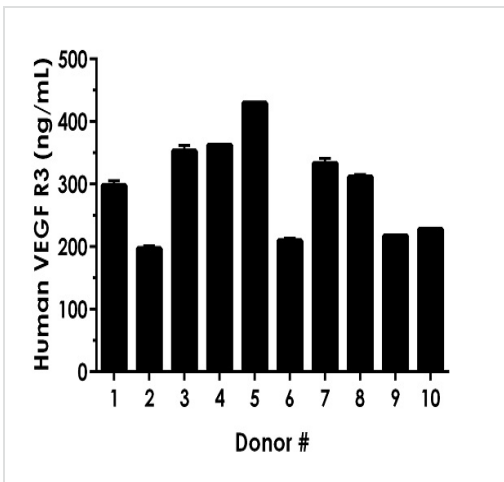


The VEGF R3 standard curve was prepared as described in Section 10. Raw data values are shown in the table. Background-subtracted data values (mean +/- SD) are graphed.



Interpolated concentrations of native VEGF R3 in human serum and plasma samples.


The concentrations of VEGF R3 were measured in duplicates, interpolated from the VEGF R3 standard curves and corrected for sample dilution. Undiluted samples are as follows: serum 5%, plasma (citrate) 5%, plasma (heparin) 5%, and plasma (EDTA) 5%. The interpolated dilution factor corrected values are plotted (mean +/- SD, n=2). The mean VEGF R3 concentration was determined to be 215.0 ng/mL in neat serum, 185.8 ng/mL in neat plasma (citrate), 197.9 ng/mL in neat plasma (heparin), and 191.5 ng/mL in neat plasma (EDTA).




Serum from ten individual healthy human female donors was measured in duplicate.

Interpolated dilution factor corrected values are plotted (mean +/- SD, n=2). The mean VEGF R3 concentration was determined to be 294.2 ng/mL with a range of 197.4 – 429.6 ng/mL.


Powered by recombinant antibodies




**Research with confidence**  
Consistent and reproducible results



**Long-term and scalable supply**  
Recombinant technology



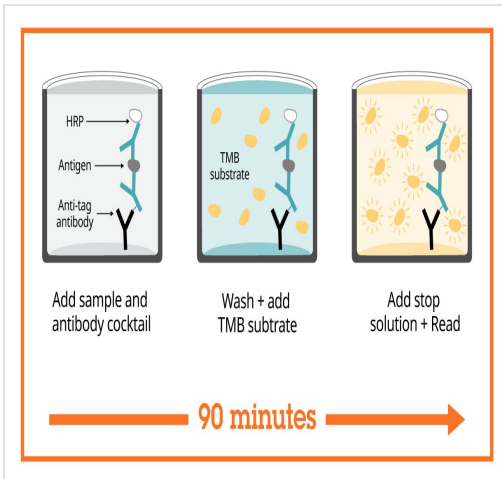
**Success from the first experiment**  
Confirmed specificity



**Ethical standards compliant**  
Animal-free production

To learn more about the advantages of recombinant antibodies see [here](#).

Sandwich ELISA - Human VEGF R3 ELISA Kit (ab252350)



Sandwich ELISA - Human VEGF R3 ELISA Kit  
(ab252350)

SimpleStep ELISA technology allows the formation of the antibody-antigen complex in one single step, reducing assay time to 90 minutes. Add samples or standards and antibody mix to wells all at once, incubate, wash, and add your final substrate. See protocol for a detailed step-by-step guide.

**Get more done with SimpleStep ELISA**

- Easy to use**  
Single-wash 90-minute protocol
- Flexible**  
Matched antibody pairs available
- Precision antibodies**  
High sensitivity, specificity and reproducibility
- Scalable**  
Now in 10-pack and 384-well formats

Sandwich ELISA - Human VEGF R3 ELISA Kit  
(ab252350)

To learn more about the advantages of SimpleStep ELISA® kits see [here](#).

**Please note:** All products are "FOR RESEARCH USE ONLY. NOT FOR USE IN DIAGNOSTIC PROCEDURES"

### Our Abpromise to you: Quality guaranteed and expert technical support

- Replacement or refund for products not performing as stated on the datasheet
- Valid for 12 months from date of delivery
- Response to your inquiry within 24 hours
- We provide support in Chinese, English, French, German, Japanese and Spanish
- Extensive multi-media technical resources to help you
- We investigate all quality concerns to ensure our products perform to the highest standards

If the product does not perform as described on this datasheet, we will offer a refund or replacement. For full details of the Abpromise, please visit <https://www.abcam.co.jp/abpromise> or contact our technical team.

## Terms and conditions

---

- Guarantee only valid for products bought direct from Abcam or one of our authorized distributors