

### Human TREM-1 ELISA Kit ab270884

リコンビナント SimpleStep ELISA

画像数 7

#### 製品の概要

製品名 Human TREM-1 ELISA Kit

検出方法 Colorimetric

再現性 Intra-Assay (同時再現性)

サンプル	N	平均値	SD	CV%
Serum	8			5.1%

Inter-Assay (日差再現性)

サンプル	N	平均値	SD	CV%
Serum	4			7.8%

サンプルの種類 Saliva, Serum, Cell culture media, Hep Plasma, EDTA Plasma, Cit plasma

アッセイタイプ Sandwich (quantitative)

検出感度 7.1 pg/ml

検出範囲 31 pg/ml - 2000 pg/ml

添加回収試験 特定サンプルでの回収試験

サンプルの種類	平均 %	測定範囲
Saliva	110	106% - 110%
Serum	100	97% - 101%
Hep Plasma	95	95% - 96%
EDTA Plasma	90	88% - 94%
Cit plasma	92	86% - 96%

全工程の試験時間 1h 30m

ステップ One step assay

## 種交差性

交差種: Human

## 製品の概要

Human TREM-1 ELISA kit (ab270884) is a single-wash 90 min sandwich ELISA designed for the quantitative measurement of TREM-1 protein in human serum, plasmas, saliva, and cell culture supernatant. It uses our proprietary SimpleStep ELISA® technology. Quantitate human TREM-1 with 7.1 pg/mL sensitivity.

SimpleStep ELISA® technology employs capture antibodies conjugated to an affinity tag that is recognized by the monoclonal antibody used to coat our SimpleStep ELISA® plates. This approach to sandwich ELISA allows the formation of the antibody-analyte sandwich complex in a single step, significantly reducing assay time. See the SimpleStep ELISA® protocol summary in the image section for further details. Our SimpleStep ELISA® technology provides several benefits:

- Single-wash protocol reduces assay time to 90 minutes or less
- High sensitivity, specificity and reproducibility from superior antibodies
- Fully validated in biological samples
- 96-wells plate breakable into 12 x 8 wells strips

A 384-well SimpleStep ELISA® microplate ([ab203359](#)) is available to use as an alternative to the 96-well microplate provided with SimpleStep ELISA® kits.

## 特記事項

The triggering receptor expressed on myeloid cells (TREM), modulate the innate response either by amplifying or dampening Toll-Like Receptor (TLR) induced signals, and act to fine-tuning the inflammatory response. Trem-1 is a member of the TREM family of receptors encoded by a cluster of genes localized to the Human chromosome 6p21.1. The presence of TREM and TREM-like receptors are expressed on a variety of innate cells of the myeloid lineage including neutrophils, monocytes, macrophages, microglia, dendritic cells, among others. Soluble Trem-1 is thought to arise through the cleavage of the Trem-1 receptor by metalloproteinases, where it acts to negatively regulate TREM receptor signaling through neutralization of the respective ligands and minimize tissue damage due to prolonged inflammatory response.

## 試験プラットフォーム

Pre-coated microplate (12 x 8 well strips)

## 製品の特性

### 保存方法

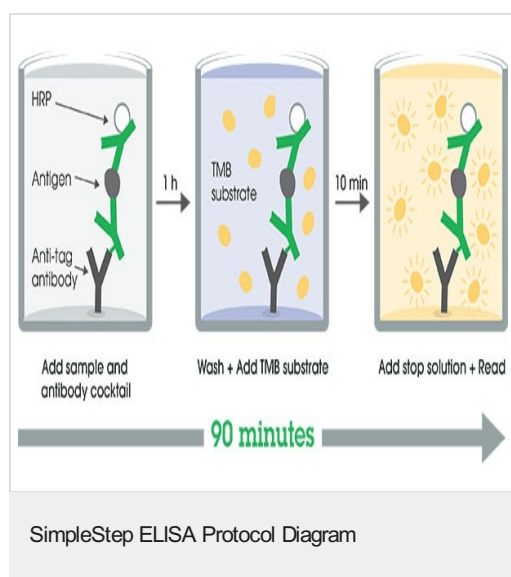
Store at +4°C. Please refer to protocols.

内容	1 x 96 tests
10X Human TREM-1 Capture Antibody	1 x 600µl
10X Human TREM-1 Detector Antibody	1 x 600µl
10X Wash Buffer PT (ab206977)	1 x 20ml
Antibody Diluent 5BI	1 x 6ml
Human TREM-1 Lyophilized Recombinant Protein	2 vials
Plate Seals	1 unit

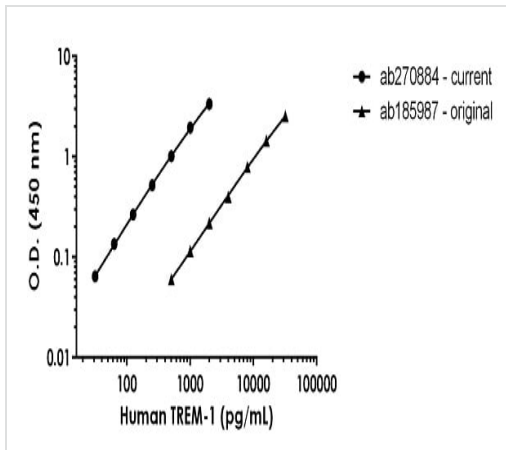
内容	1 x 96 tests
Sample Diluent 25BS	1 x 20ml
Sample Diluent NS (ab193972)	1 x 12ml
SimpleStep Pre-Coated 96-Well Microplate (ab206978)	1 unit
Stop Solution	1 x 12ml
TMB Development Solution	1 x 12ml

<b>機能</b>	Stimulates neutrophil and monocyte-mediated inflammatory responses. Triggers release of pro-inflammatory chemokines and cytokines, as well as increased surface expression of cell activation markers. Amplifier of inflammatory responses that are triggered by bacterial and fungal infections and is a crucial mediator of septic shock.
<b>組織特異性</b>	Highly expressed in adult liver, lung and spleen than in corresponding fetal tissue. Also expressed in the lymph node, placenta, spinal cord and heart tissues. Expression is more elevated in peripheral blood leukocytes than in the bone marrow and in normal cells than malignant cells. Expressed at low levels in the early development of the hematopoietic system and in the promonocytic stage and at high levels in mature monocytes. Strongly expressed in acute inflammatory lesions caused by bacteria and fungi. Isoform 2 was detected in the lung, liver and mature monocytes.
<b>配列類似性</b>	Contains 1 Ig-like V-type (immunoglobulin-like) domain.
<b>翻訳後修飾</b>	Glycosylated.
<b>細胞内局在</b>	Secreted and Cell membrane.

## 画像

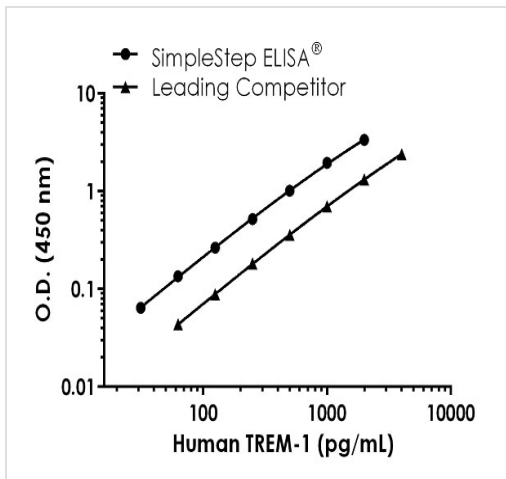


SimpleStep ELISA technology allows the formation of the antibody-antigen complex in one single step, reducing assay time to 90 minutes. Add samples or standards and antibody mix to wells all at once, incubate, wash, and add your final substrate. See protocol for a detailed step-by-step guide.



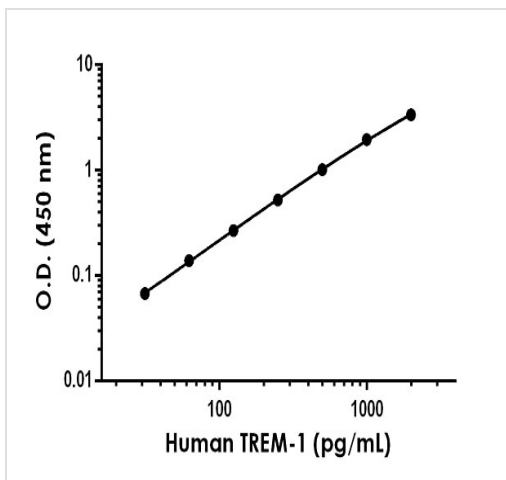
Standard Curve comparison between the original Human TREM-1 SimpleStep ELISA kit (**ab185987**) and current Human TREM-1 SimpleStep ELISA kit (ab270884).

Human TREM-1 standard curve comparison



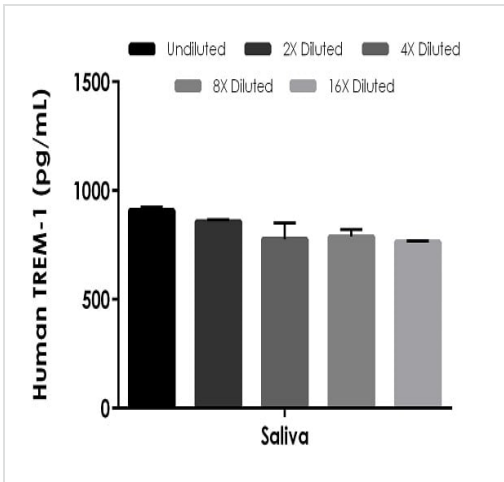
Standard Curve comparison between Human TREM-1 SimpleStep ELISA kit and traditional ELISA kit from leading competitor. SimpleStep ELISA kit shows increased sensitivity.

Human TREM-1 competitor curve comparison



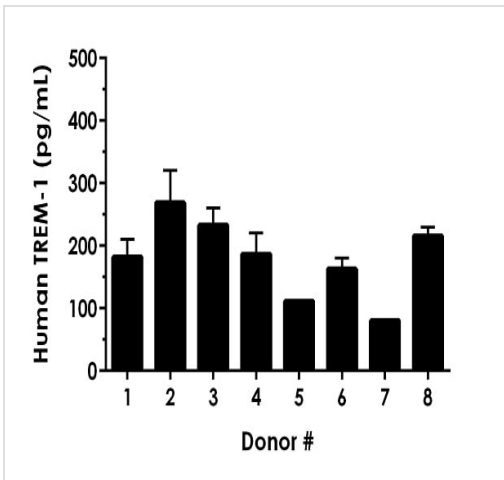
The TREM-1 standard curve was prepared as described in Section 10. Raw data values are shown in the table. Background-subtracted data values (mean +/- SD) are graphed.

Example of human TREM-1 standard curve in Sample Diluent NS.



Interpolated concentrations of native TREM-1 in human saliva.

The concentrations of TREM-1 were measured in duplicates, interpolated from the target standard curves and corrected for sample dilution. Undiluted samples are as follows: saliva 100%. The interpolated dilution factor corrected values are plotted (mean +/- SD, n=2). The mean target concentration was determined to be 820 pg/mL in saliva.



Serum from eight individual healthy TREM-1 gender donors was measured in duplicate.

Interpolated dilution factor corrected values are plotted (mean +/- SD, n=2). The mean TREM-1 concentration was determined to be 180 pg/mL with a range of 80 – 269 pg/mL.

Powered by recombinant antibodies

- Research with confidence**  
Consistent and reproducible results
- Long-term and scalable supply**  
Recombinant technology
- Success from the first experiment**  
Confirmed specificity
- Ethical standards compliant**  
Animal-free production

Sandwich ELISA - Human TREM-1 ELISA Kit (ab270884)

To learn more about the advantages of recombinant antibodies see [here](#).

**Please note:** All products are "FOR RESEARCH USE ONLY. NOT FOR USE IN DIAGNOSTIC PROCEDURES"

### **Our Abpromise to you: Quality guaranteed and expert technical support**

---

- Replacement or refund for products not performing as stated on the datasheet
- Valid for 12 months from date of delivery
- Response to your inquiry within 24 hours
  
- We provide support in Chinese, English, French, German, Japanese and Spanish
- Extensive multi-media technical resources to help you
- We investigate all quality concerns to ensure our products perform to the highest standards

If the product does not perform as described on this datasheet, we will offer a refund or replacement. For full details of the Abpromise, please visit <https://www.abcam.co.jp/abpromise> or contact our technical team.

### **Terms and conditions**

---

- Guarantee only valid for products bought direct from Abcam or one of our authorized distributors