

Human TIMP2 ELISA Kit ab100653

4 References 画像数 2

製品の概要

製品名	Human TIMP2 ELISA Kit
検出方法	Colorimetric
サンプルの種類	Cell culture supernatant, Serum, Plasma
アッセイタイプ	Sandwich (quantitative)
検出感度	< 2 pg/ml
検出範囲	1.6 pg/ml - 1200 pg/ml
添加回収試験	94 %

特定サンプルでの回収試験

サンプルの種類	平均 %	測定範囲
Cell culture supernatant	94.53	84% - 103%
Serum	94.28	83% - 103%
Plasma	93.69	82% - 102%

ステップ Multiple steps standard assay

種交差性 交差種: Human

製品の概要 Abcam's Human TIMP-2 ELISA (Enzyme-Linked Immunosorbent Assay) kit is an *in vitro* enzyme-linked immunosorbent assay for the quantitative measurement of Human TIMP-2 in serum, plasma and cell culture supernatants.

This assay employs an antibody specific for Human TIMP-2 coated on a 96-well plate. Standards and samples are pipetted into the wells and TIMP-2 present in a sample is bound to the wells by the immobilized antibody. The wells are washed and biotinylated anti-Human TIMP-2 antibody is added. After washing away unbound biotinylated antibody, HRP-conjugated streptavidin is pipetted to the wells. The wells are again washed, a TMB substrate solution is added to the wells and color develops in proportion to the amount of TIMP-2 bound. The Stop Solution changes the color from blue to yellow, and the intensity of the color is measured at 450 nm.

Get results in 90 minutes with Human TIMP2 ELISA Kit ([ab188395](#)) from our SimpleStep ELISA® range.

**特記事項** Optimization may be required with urine samples.

**試験プラットフォーム** Microplate

## 製品の特性

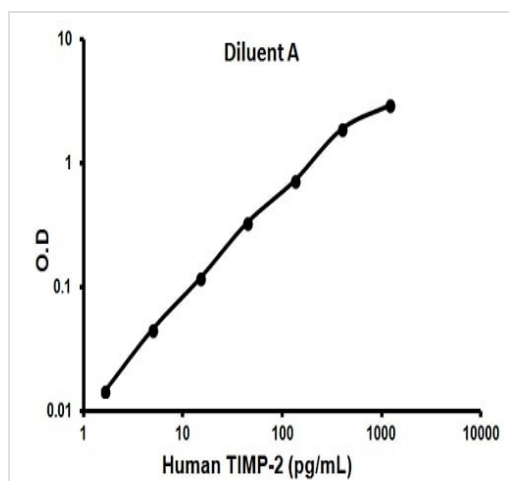
**保存方法** Store at -20°C. Please refer to protocols.

内容	1 x 96 tests
20X Wash Buffer	1 x 25ml
5X Assay Diluent B	1 x 15ml
500X HRP-Streptavidin Concentrate	1 x 200µl
Assay Diluent A	1 x 30ml
Biotinylated anti-Human TIMP-2	2 vials
Recombinant Human TIMP-2 Standard (lyophilized)	2 vials
Stop Solution	1 x 8ml
TIMP-2 Microplate (12 x 8 wells)	1 unit
TMB One-Step Substrate Reagent	1 x 12ml

**関連性** Matrix metalloproteinases (MMPs) are a family of enzymes that are responsible for the degradation of extracellular matrix components such as collagen, laminin and proteoglycans. These enzymes are involved in normal physiological processes such as embryogenesis and tissue remodeling and may play an important role in arthritis, periodontitis, and metastasis. The activation and activity of MMPs are regulated by a family of endogenous inhibitors, tissue inhibitors of metalloproteinase (TIMP). TIMP2 (also called CSC-21K) is a 24 kDa glycoprotein that is expressed by a variety of cell types. It forms a non covalent, stoichiometric complex with both latent and active MMPs. TIMP2 shows a preference for MMP2. TIMPs are capable of altering the metastatic potential of cancer cells and have been shown to inhibit invasion and metastasis in animal models. TIMP2 is constitutively produced in low (pg/ml) levels by most cell types in tissue culture. The low protein levels produced often require concentration of cell culture media to visualize the bands by Western Blotting.

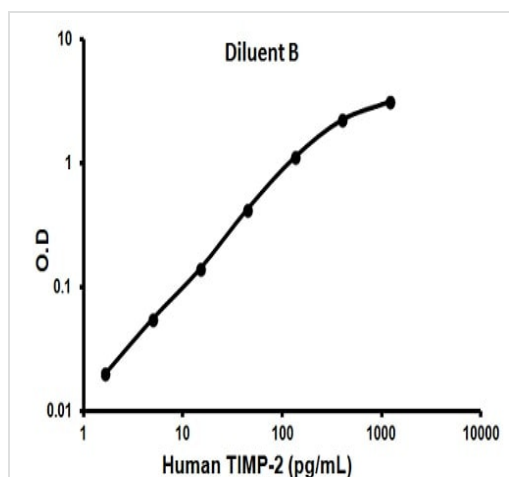
**細胞内局在** Secreted

## 画像



Representative standard curve using ab100653

Typical standard curve



Representative standard curve using ab100653

Typical standard curve

**Please note:** All products are "FOR RESEARCH USE ONLY. NOT FOR USE IN DIAGNOSTIC PROCEDURES"

### Our Abpromise to you: Quality guaranteed and expert technical support

- Replacement or refund for products not performing as stated on the datasheet
- Valid for 12 months from date of delivery
- Response to your inquiry within 24 hours
- We provide support in Chinese, English, French, German, Japanese and Spanish
- Extensive multi-media technical resources to help you
- We investigate all quality concerns to ensure our products perform to the highest standards

If the product does not perform as described on this datasheet, we will offer a refund or replacement. For full details of the Abpromise, please visit <https://www.abcam.co.jp/abpromise> or contact our technical team.

#### **Terms and conditions**

---

- Guarantee only valid for products bought direct from Abcam or one of our authorized distributors