

Human TARC ELISA Kit (CCL17) ab183366

SimpleStep ELISA

1 References [画像数 5](#)

製品の概要

製品名 Human TARC ELISA Kit (CCL17)

検出方法 Colorimetric

再現性 Intra-Assay (同時再現性)

サンプル	N	平均値	SD	CV%
Supernatant	5			4.4%

Inter-Assay (日差再現性)

サンプル	N	平均値	SD	CV%
Supernatant	3			3.3%

サンプルの種類 Cell culture supernatant, Serum, Hep Plasma, EDTA Plasma, Cit plasma

アッセイタイプ Sandwich (quantitative)

検出感度 78.5 pg/ml

検出範囲 176 pg/ml - 2000 pg/ml

添加回収試験 特定サンプルでの回収試験

サンプルの種類	平均 %	測定範囲
Serum	= 112	98% - 126%
Cell culture media	= 93	91% - 95%
Hep Plasma	= 123	117% - 130%
EDTA Plasma	= 108	104% - 111%
Cit plasma	= 97	97% - 98%

全工程の試験時間 1h 30m

ステップ One step assay

種交差性

交差種: Human

製品の概要

Human TARC ELISA Kit (CCL17) (ab183366) is a single-wash 90 min sandwich ELISA designed for the quantitative measurement of TARC protein in human cell culture supernatants, serum and plasma samples. It uses our proprietary SimpleStep ELISA® technology. Quantitate human TARC with 78.5 pg/mL sensitivity.

SimpleStep ELISA® technology employs capture antibodies conjugated to an affinity tag that is recognized by the monoclonal antibody used to coat our SimpleStep ELISA® plates. This approach to sandwich ELISA allows the formation of the antibody-analyte sandwich complex in a single step, significantly reducing assay time. See the SimpleStep ELISA® protocol summary in the image section for further details. Our SimpleStep ELISA® technology provides several benefits:

- Single-wash protocol reduces assay time to 90 minutes or less
- High sensitivity, specificity and reproducibility from superior antibodies
- Fully validated in biological samples
- 96-wells plate breakable into 12 x 8 wells strips

A 384-well SimpleStep ELISA® microplate ([ab203359](#)) is available to use as an alternative to the 96-well microplate provided with SimpleStep ELISA® kits.

特記事項

TARC is a member of the CC chemokine group that is constitutively expressed in the thymus and is transiently produced by a variety of cell types: dendritic cells (DC), endothelial cells, keratinocytes (KC), bronchial epithelial cells and fibroblasts. TARC is a ligand for chemokine receptor CCR4, expressed on Th2 lymphocytes, basophils and natural killer cells. CCL17 binds to CCR4 to induce chemotaxis in T cells.

TARC production appears to be upregulated by TNF- α and IFN- γ synergistically through NF κ B and p38 signaling pathways in Human keratinocytes. Cytokines IL-4 and TGF- β 1 act to downregulate TNF- α and IFN- γ induced TARC production in Human keratinocytes. TARC (CCL17) and its receptor CCR4 are believed to play important roles in the pathogenesis of the skin diseases Atopic Dermatitis (AD), Bullous pemphigoid (BP) and Mycosis fungoides (MF).

試験プラットフォーム

Microplate

製品の特性

保存方法

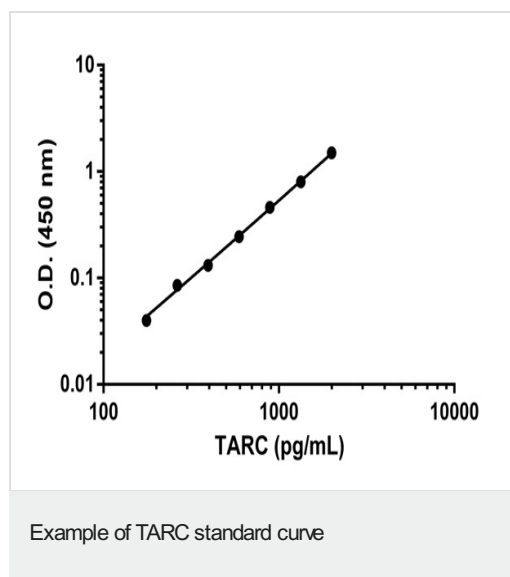
Store at +4°C. Please refer to protocols.

内容	1 x 96 tests	1 x 96 tests
10X Human TARC Capture Antibody	1 x 600 μ l	1 x 600 μ l
10X Human TARC Detector Antibody	1 x 600 μ l	1 x 600 μ l
10X Wash Buffer PT (ab206977)	1 x 20ml	1 x 20ml
Antibody Diluent CPI - HAMA Blocker (ab193969)	1 x 6ml	1 x 6ml
Plate Seals	1 unit	1 unit
Sample Diluent 50BP	1 x 20ml	1 x 20ml

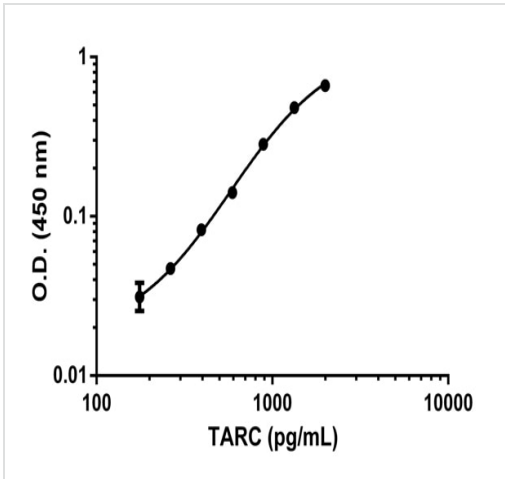
内容	1 x 96 tests	1 x 96 tests
Sample Diluent NS (ab193972)	1 x 50ml	1 x 50ml
SimpleStep Pre-Coated 96-Well Microplate (ab206978)	1 unit	1 unit
Stop Solution	1 x 12ml	1 x 12ml
TARC Human Lyophilized Recombinant Protein	2 vials	2 vials
TMB Development Solution	1 x 12ml	1 x 12ml

機能	Chemotactic factor for T-lymphocytes but not monocytes or granulocytes. May play a role in T-cell development in thymus and in trafficking and activation of mature T-cells. Binds to CCR4.
組織特異性	Expressed at high levels in thymus and at low levels in the lung, colon and small intestine.
配列類似性	Belongs to the intercrine beta (chemokine CC) family.
細胞内局在	Secreted.

画像

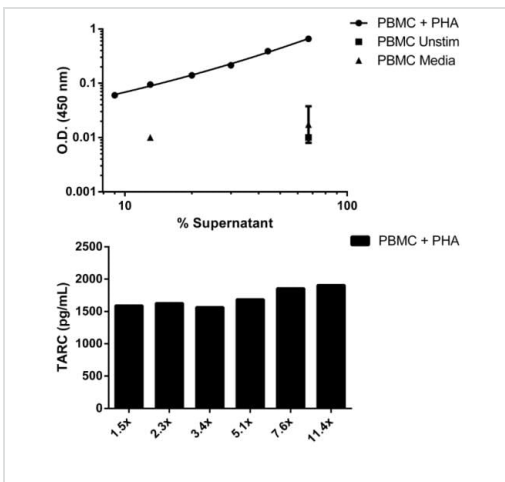


The TARC standard curve was prepared using Sample Diluent.
Background-subtracted data values (mean +/- SD) are graphed.



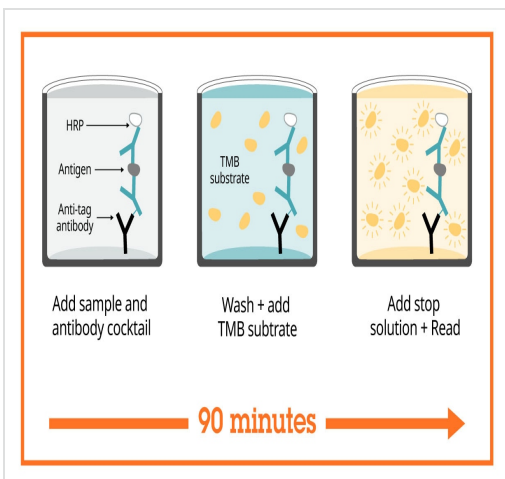
Example of TARC standard curve

The TARC standard curve was prepared using Sample Diluent. Background-subtracted data values (mean +/- SD) are graphed.



Titration of PBMC Cell Culture Supernatants diluted within the working range of the assay

Background subtracted data from duplicate measurements are plotted. Bar graph denotes quantification of TARC interpolated from standard curve and multiplied by dilution factor.



SimpleStep ELISA technology allows the formation of the antibody-antigen complex in one single step, reducing assay time to 90 minutes. Add samples or standards and antibody mix to wells all at once, incubate, wash, and add your final substrate. See protocol for a detailed step-by-step guide.

Sandwich ELISA - Human TARC ELISA Kit (CCL17) (ab183366)

Get more done with SimpleStep ELISA



Easy to use
Single-wash 90-minute protocol



Flexible
Matched antibody pairs available



Precision antibodies
High sensitivity, specificity and reproducibility



Scalable
Now in 10-pack and 384-well formats

To learn more about the advantages of SimpleStep ELISA[®] kits see [here](#).

Sandwich ELISA - Human TARC ELISA Kit (CCL17)
(ab183366)

Please note: All products are "FOR RESEARCH USE ONLY. NOT FOR USE IN DIAGNOSTIC PROCEDURES"

Our Abpromise to you: Quality guaranteed and expert technical support

- Replacement or refund for products not performing as stated on the datasheet
- Valid for 12 months from date of delivery
- Response to your inquiry within 24 hours
- We provide support in Chinese, English, French, German, Japanese and Spanish
- Extensive multi-media technical resources to help you
- We investigate all quality concerns to ensure our products perform to the highest standards

If the product does not perform as described on this datasheet, we will offer a refund or replacement. For full details of the Abpromise, please visit <https://www.abcam.co.jp/abpromise> or contact our technical team.

Terms and conditions

- Guarantee only valid for products bought direct from Abcam or one of our authorized distributors