

Human SPARCL1 ELISA Kit (SPARC-like protein 1) ab272478

リコンビナント SimpleStep ELISA

画像数 5

製品の概要

製品名	Human SPARCL1 ELISA Kit (SPARC-like protein 1)
検出方法	Colorimetric
再現性	Intra-Assay (同時再現性)

サンプル	N	平均値	SD	CV%
Serum	8			3.3%

サンプル	N	平均値	SD	CV%
Serum	3			3.27%

サンプルの種類 Serum, Tissue Extracts, Hep Plasma, EDTA Plasma, Cit plasma

アッセイタイプ Sandwich (quantitative)

検出感度 7.89 pg/ml

検出範囲 39.06 pg/ml - 2500 pg/ml

添加回収試験 特定サンプルでの回収試験

サンプルの種類	平均 %	測定範囲
Serum	92	89% - 95%
Tissue Extracts	105	104% - 106%
Hep Plasma	99	93% - 108%
EDTA Plasma	99	96% - 104%
Cit plasma	102	92% - 116%

全工程の試験時間 1h 30m

ステップ One step assay

種交差性

交差種: Human

製品の概要

Human SPARCL1 ELISA kit (ab272478) is a single-wash 90 min sandwich ELISA designed for the quantitative measurement of Human SPARCL1 protein in serum, plasma and cell and tissue culture extract. It uses our proprietary SimpleStep ELISA® technology. Quantitate Human SPARCL1 with 7.89 pg/mL sensitivity.

SimpleStep ELISA® technology employs capture antibodies conjugated to an affinity tag that is recognized by the monoclonal antibody used to coat our SimpleStep ELISA® plates. This approach to sandwich ELISA allows the formation of the antibody-analyte sandwich complex in a single step, significantly reducing assay time. See the SimpleStep ELISA® protocol summary in the image section for further details. Our SimpleStep ELISA® technology provides several benefits:

- Single-wash protocol reduces assay time to 90 minutes or less
- High sensitivity, specificity and reproducibility from superior antibodies
- Fully validated in biological samples
- 96-wells plate breakable into 12 x 8 wells strips

A 384-well SimpleStep ELISA® microplate (**ab203359**) is available to use as an alternative to the 96-well microplate provided with SimpleStep ELISA® kits.

特記事項

SPARCL1 (SPARC-Like Protein 1), also known as HEVIN, is a 75 kD protein that is encoded by the *SPARCL1* gene. SPARCL1 is highly expressed in high endothelial venules (HEVs) and is thought to contribute to the induction or maintenance of features of the HEV endothelium that facilitate lymphocyte migration. SPARCL1 is also highly expressed in heart, lung, brain, skeletal muscle, ovary, colon, and small intestine tissues. SPARCL1 may have implications in the regulation of cell adhesion, migration and proliferation. The antibody pair was designed against the mature full-length extracellular fragment of SPARCL1. SPARCL1 shares 64%, 64%, 72%, and 93% sequence homology in mouse, rat, cow, and monkey, respectively.

Abcam has not and does not intend to apply for the REACH Authorisation of customers' uses of products that contain European Authorisation list (Annex XIV) substances.

It is the responsibility of our customers to check the necessity of application of REACH Authorisation, and any other relevant authorisations, for their intended uses.

試験プラットフォーム

Pre-coated microplate (12 x 8 well strips)

製品の特性

保存方法

Store at +4°C. Please refer to protocols.

内容	1 x 96 tests
10X Human SPARCL1 (SPARC-like protein 1) Capture Antibody	1 x 600µl
10X Human SPARCL1 (SPARC-like protein 1) Detector Antibody	1 x 600µl

内容	1 x 96 tests
10X Wash Buffer PT (ab206977)	1 x 20ml
50X Cell Extraction Enhancer Solution (ab193971)	1 x 1ml
5X Cell Extraction Buffer PTR (ab193970)	1 x 10ml
Antibody Diluent CPI - HAMA Blocker (ab193969)	1 x 6ml
Human SPARCL1 (SPARC-like protein 1) Lyophilized Recombinant Protein	2 vials
Plate Seals	1 unit
Sample Diluent NS (ab193972)	1 x 50ml
SimpleStep Pre-Coated 96-Well Microplate (ab206978)	1 unit
Stop Solution	1 x 12ml
TMB Development Solution	1 x 12ml

組織特異性

Highly expressed in lymph node, brain, heart, lung, skeletal muscle, ovary, small intestine, and colon, with lower levels in placenta, pancreas, testis, spleen, and thymus, and no expression in kidney, liver, and peripheral blood leukocytes.

配列類似性

Belongs to the SPARC family.
Contains 1 EF-hand domain.
Contains 1 follistatin-like domain.
Contains 1 Kazal-like domain.

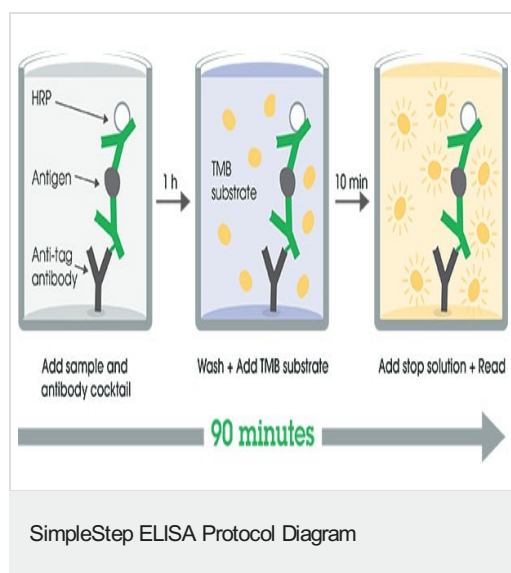
翻訳後修飾

N- and O-glycosylated. O-glycosylated with a core 1 or possibly core 8 glycan. Thr-398 is the preferred site to Thr-399.

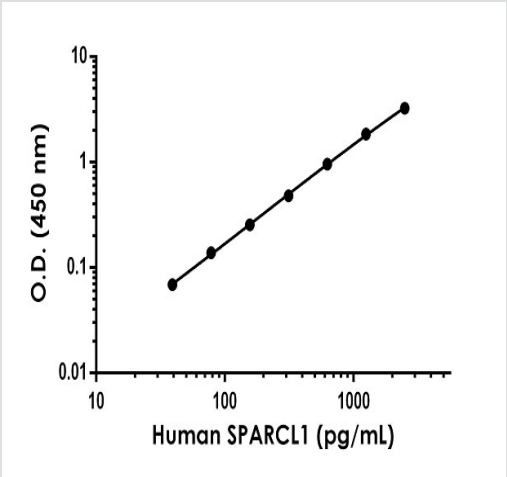
細胞内局在

Secreted > extracellular space > extracellular matrix.

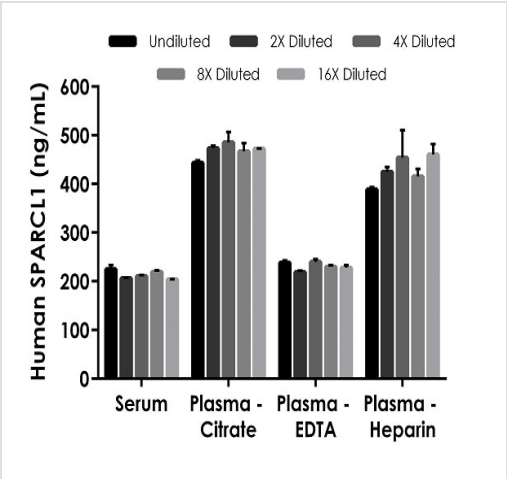
画像



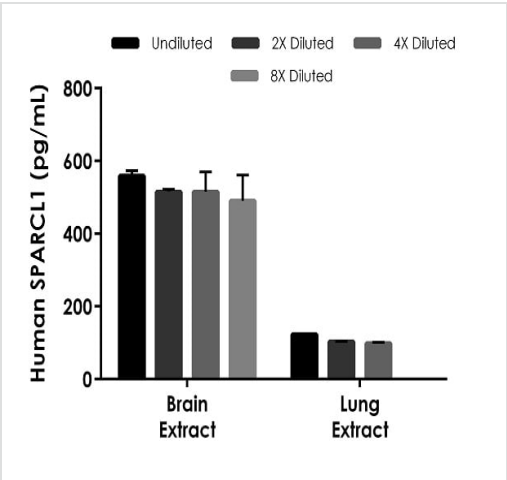
SimpleStep ELISA technology allows the formation of the antibody-antigen complex in one single step, reducing assay time to 90 minutes. Add samples or standards and antibody mix to wells all at once, incubate, wash, and add your final substrate. See protocol for a detailed step-by-step guide.



Example of human SPARCL1 standard curve in Sample Diluent NS.



Interpolated concentrations of native SPARCL1 in human serum and plasma samples.



Interpolated concentrations of native SPARCL1 in human brain tissue

The concentrations of SPARCL1 were measured in duplicates, interpolated from the SPARCL1 standard curves and corrected for sample dilution. Undiluted samples are as follows: serum 1:100, plasma (citrate) 1:200, plasma (EDTA) 1:100, and plasma (heparin) 1:200. The interpolated dilution factor corrected values are plotted (mean \pm SD, $n=2$). The mean SPARCL1 concentration was determined to be 215.28 ng/mL in serum, 468.22 ng/mL in plasma (citrate), 231.62 ng/mL in plasma (EDTA), and 428.58 ng/mL in plasma (heparin).

based on a 25 μ g/mL extract load and human lung based on a 250 μ g/mL extract load. The concentrations of SPARCL1 were measured in duplicate and interpolated from the SPARCL1 standard curve and corrected for sample dilution. The interpolated dilution factor corrected values are plotted (mean \pm SD, $n=2$). The mean SPARCL1 concentration was determined to be 519.79 pg/mL in brain extract and 108.09 pg/mL in lung extract.

Powered by
recombinant antibodies



Research with confidence
Consistent and reproducible results



Long-term and scalable supply
Recombinant technology



Success from the first experiment
Confirmed specificity



Ethical standards compliant
Animal-free production

Sandwich ELISA - Human SPARCL1 ELISA

Kit (SPARC-like protein 1) (ab272478)

To learn more about the advantages of recombinant antibodies see [here](#).

Please note: All products are "FOR RESEARCH USE ONLY. NOT FOR USE IN DIAGNOSTIC PROCEDURES"

Our Abpromise to you: Quality guaranteed and expert technical support

- Replacement or refund for products not performing as stated on the datasheet
- Valid for 12 months from date of delivery
- Response to your inquiry within 24 hours
- We provide support in Chinese, English, French, German, Japanese and Spanish
- Extensive multi-media technical resources to help you
- We investigate all quality concerns to ensure our products perform to the highest standards

If the product does not perform as described on this datasheet, we will offer a refund or replacement. For full details of the Abpromise, please visit <https://www.abcam.co.jp/abpromise> or contact our technical team.

Terms and conditions

- Guarantee only valid for products bought direct from Abcam or one of our authorized distributors