

Human SOX2 ELISA Kit ab245707

リコンビナント SimpleStep ELISA®

画像数 5

製品の概要

製品名	Human SOX2 ELISA Kit
検出方法	Colorimetric
再現性	Intra-Assay (同時再現性)

サンプル	N	平均値	SD	CV%
cell extract	24			2.7%

サンプル	N	平均値	SD	CV%
cell extract	3			4.1%

サンプルの種類	Cell culture extracts
アッセイタイプ	Sandwich (quantitative)
検出感度	31 pg/ml
検出範囲	0.469 ng/ml - 30 ng/ml
添加回収試験	特定サンプルでの回収試験

サンプルの種類	平均 %	測定範囲
Cell culture extracts	88	79% - 98%

全工程の試験時間	1h 30m
ステップ	One step assay
種交差性	交差種: Human

製品の概要

Human SOX2 ELISA Kit (ab245707) is a single-wash 90 min sandwich ELISA designed for the quantitative measurement of SOX2 protein in cell culture extracts. It uses our proprietary SimpleStep ELISA® technology. Quantitate Human SOX2 with 31 pg/ml sensitivity.

SimpleStep ELISA® technology employs capture antibodies conjugated to an affinity tag that is recognized by the monoclonal antibody used to coat our SimpleStep ELISA® plates. This

approach to sandwich ELISA allows the formation of the antibody-analyte sandwich complex in a single step, significantly reducing assay time. See the SimpleStep ELISA® protocol summary in the image section for further details. Our SimpleStep ELISA® technology provides several benefits:

- Single-wash protocol reduces assay time to 90 minutes or less
- High sensitivity, specificity and reproducibility from superior antibodies
- Fully validated in biological samples
- 96-wells plate breakable into 12 x 8 wells strips

A 384-well SimpleStep ELISA® microplate (**ab203359**) is available to use as an alternative to the 96-well microplate provided with SimpleStep ELISA® kits.

特記事項

Abcam has not and does not intend to apply for the REACH Authorisation of customers' uses of products that contain European Authorisation list (Annex XIV) substances. It is the responsibility of our customers to check the necessity of application of REACH Authorisation, and any other relevant authorisations, for their intended uses.

試験プラットフォーム

Pre-coated microplate (12 x 8 well strips)

製品の特性

保存方法

Store at +4°C. Please refer to protocols.

内容	1 x 96 tests
10X Human SOX2 Capture Antibody	1 x 600µl
10X Human SOX2 Detector Antibody	1 x 600µl
10X Wash Buffer PT (ab206977)	1 x 20ml
5X Cell Extraction Buffer PTR (ab193970)	1 x 10ml
Antibody Diluent CPI - HAMA Blocker (ab193969)	1 x 6ml
Human SOX2 Lyophilized Recombinant Protein	2 vials
Plate Seals	1 unit
Sample Diluent NS (ab193972)	1 x 12ml
SimpleStep Pre-Coated 96-Well Microplate (ab206978)	1 unit
Stop Solution	1 x 12ml
TMB Development Solution	1 x 12ml

機能

Transcription factor that forms a trimeric complex with OCT4 on DNA and controls the expression of a number of genes involved in embryonic development such as YES1, FGF4, UTF1 and ZFP206 (By similarity). Critical for early embryogenesis and for embryonic stem cell pluripotency.

関連疾患

Defects in SOX2 are the cause of microphthalmia syndromic type 3 (MCOPS3) [MIM:206900].

Microphthalmia is a clinically heterogeneous disorder of eye formation, ranging from small size of a single eye to complete bilateral absence of ocular tissues (anophthalmia). In many cases, microphthalmia/anophthalmia occurs in association with syndromes that include non-ocular abnormalities. MCOPS3 is characterized by the rare association of malformations including uni- or bilateral anophthalmia or microphthalmia, and esophageal atresia with trachoesophageal fistula.

配列類似性

Contains 1 HMG box DNA-binding domain.

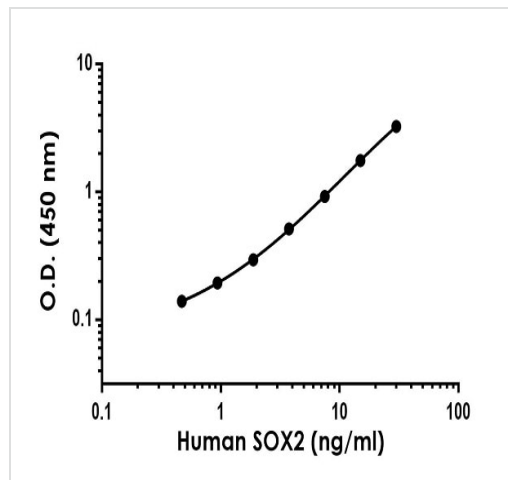
翻訳後修飾

Sumoylation inhibits binding on DNA and negatively regulates the FGF4 transactivation.

細胞内局在

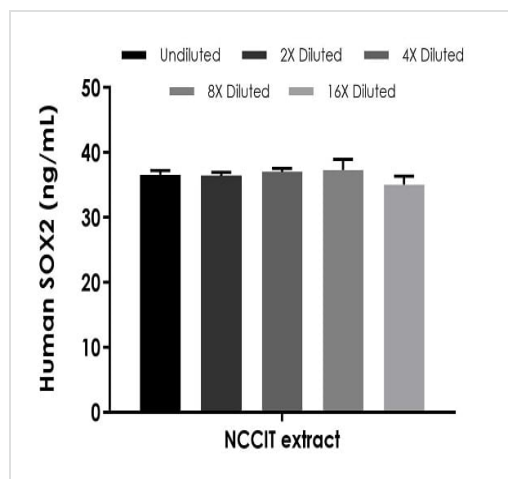
Nucleus.

画像



The SOX2 standard curve was prepared as described in Section 10. Raw data values are shown in the table. Background-subtracted data values (mean \pm SD) are graphed.

Example of human SOX2 standard curve in 1X Cell Extraction Buffer PTR.



The concentrations of SOX2 were measured in duplicate and interpolated from the SOX2 standard curve and corrected for sample dilution. The interpolated dilution factor corrected values are plotted (mean \pm SD, $n=2$). The mean SOX2 concentration was determined to be 36.48 ng/mL.

Interpolated concentrations of native SOX2 in human NCCIT cell extracts based on a 50 μ g/mL extract load.

Powered by
recombinant antibodies



Research with confidence
Consistent and reproducible results



Long-term and scalable supply
Recombinant technology



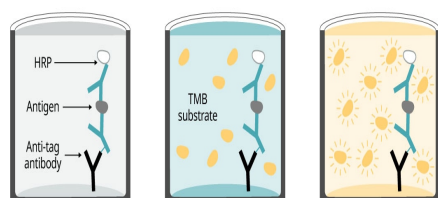
Success from the first experiment
Confirmed specificity



Ethical standards compliant
Animal-free production

Sandwich ELISA - Human SOX2 ELISA Kit
(ab245707)

To learn more about the advantages of recombinant antibodies see [here](#).



Add sample and
antibody cocktail

Wash + add
TMB substrate

Add stop
solution + Read

90 minutes

SimpleStep ELISA technology allows the formation of the antibody-antigen complex in one single step, reducing assay time to 90 minutes. Add samples or standards and antibody mix to wells all at once, incubate, wash, and add your final substrate. See protocol for a detailed step-by-step guide.

Sandwich ELISA - Human SOX2 ELISA Kit
(ab245707)

**Get more done with
SimpleStep ELISA**



Easy to use
Single-wash 90-minute
protocol



Flexible
Matched antibody pairs
available



Precision antibodies
High sensitivity, specificity
and reproducibility



Scalable
Now in 10-pack and
384-well formats

Sandwich ELISA - Human SOX2 ELISA Kit
(ab245707)

To learn more about the advantages of SimpleStep ELISA® kits
see [here](#).

Please note: All products are "FOR RESEARCH USE ONLY. NOT FOR USE IN DIAGNOSTIC PROCEDURES"

Our Abpromise to you: Quality guaranteed and expert technical support

- Replacement or refund for products not performing as stated on the datasheet
- Valid for 12 months from date of delivery
- Response to your inquiry within 24 hours
- We provide support in Chinese, English, French, German, Japanese and Spanish
- Extensive multi-media technical resources to help you
- We investigate all quality concerns to ensure our products perform to the highest standards

If the product does not perform as described on this datasheet, we will offer a refund or replacement. For full details of the Abpromise, please visit <https://www.abcam.co.jp/abpromise> or contact our technical team.

Terms and conditions

- Guarantee only valid for products bought direct from Abcam or one of our authorized distributors