

Human Resistin ELISA Kit ab100634

2 References 画像数 2

製品の概要

製品名	Human Resistin ELISA Kit
検出方法	Colorimetric
サンプルの種類	Cell culture supernatant, Serum, Plasma
アッセイタイプ	Sandwich (quantitative)
検出感度	< 2 pg/ml
検出範囲	1.4 pg/ml - 400 pg/ml
添加回収試験	95 %

特定サンプルでの回収試験

サンプルの種類	平均 %	測定範囲
Cell culture supernatant	98.42	89% - 108%
Serum	93.59	78% - 102%
Plasma	94.31	79% - 103%

ステップ Multiple steps standard assay

種交差性 交差種: Human

製品の概要 Abcam's Resistin Human ELISA (Enzyme-Linked Immunosorbent Assay) kit is an *in vitro* enzyme-linked immunosorbent assay for the quantitative measurement of Human Resistin in serum, plasma, and cell culture supernatants.

This assay employs an antibody specific for Human Resistin coated on a 96-well plate. Standards and samples are pipetted into the wells and Resistin present in a sample is bound to the wells by the immobilized antibody. The wells are washed and biotinylated anti-Human Resistin antibody is added. After washing away unbound biotinylated antibody, HRP-conjugated streptavidin is pipetted to the wells. The wells are again washed, a TMB substrate solution is added to the wells and color develops in proportion to the amount of Resistin bound. The Stop Solution changes the color from blue to yellow, and the intensity of the color is measured at 450 nm.

Get results in 90 minutes with Human Resistin ELISA Kit ([ab183364](#)) from our SimpleStep ELISA® range.

特記事項 Optimization may be required with urine samples.

試験プラットフォーム Microplate

製品の特性

保存方法 Store at -20°C. Please refer to protocols.

内容	1 x 96 tests
20X Wash Buffer	1 x 25ml
100X HRP-Streptavidin Concentrate	1 x 200µl
5X Assay Diluent B	1 x 15ml
Assay Diluent A	1 x 30ml
Biotinylated anti-Human Resistin	2 vials
Recombinant Human Resistin Standard (lyophilized)	2 vials
Resistin Microplate (12 x 8 wells)	1 unit
Stop Solution	1 x 8ml
TMB One-Step Substrate Reagent	1 x 12ml

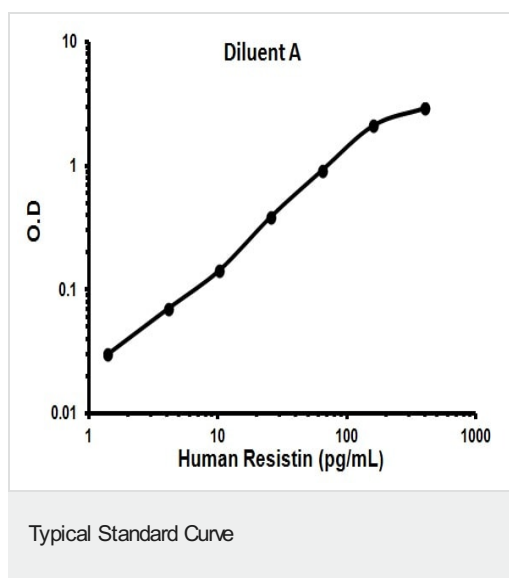
機能 Hormone that seems to suppress insulin ability to stimulate glucose uptake into adipose cells.
Potentially links obesity to diabetes.

組織特異性 Expressed only in fatty tissues.

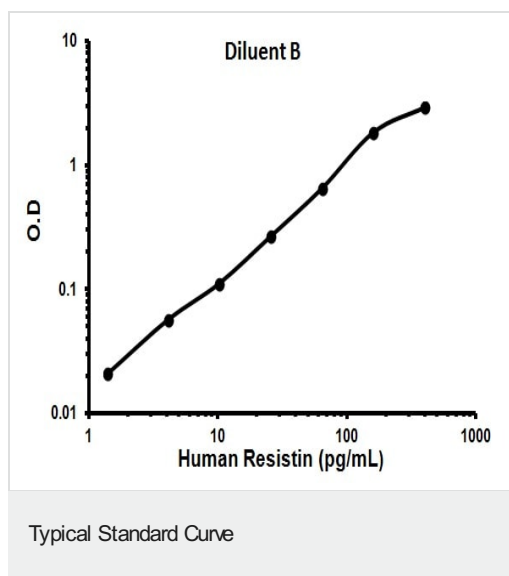
配列類似性 Belongs to the resistin/FIZZ family.

細胞内局在 Secreted.

画像



Representative Standard Curve using ab100634.



Representative Standard Curve using ab100634.

Please note: All products are "FOR RESEARCH USE ONLY. NOT FOR USE IN DIAGNOSTIC PROCEDURES"

Our Abpromise to you: Quality guaranteed and expert technical support

- Replacement or refund for products not performing as stated on the datasheet
- Valid for 12 months from date of delivery

- Response to your inquiry within 24 hours
- We provide support in Chinese, English, French, German, Japanese and Spanish
- Extensive multi-media technical resources to help you
- We investigate all quality concerns to ensure our products perform to the highest standards

If the product does not perform as described on this datasheet, we will offer a refund or replacement. For full details of the Abpromise, please visit <https://www.abcam.co.jp/abpromise> or contact our technical team.

Terms and conditions

- Guarantee only valid for products bought direct from Abcam or one of our authorized distributors