

Human PreAlbumin ELISA Kit (Transthyretin) ab108895

7 References 画像数 3

製品の概要

製品名	Human PreAlbumin ELISA Kit (Transthyretin)			
検出方法	Colorimetric			
再現性	Intra-Assay (同時再現性)			
	サンプル	N	平均値	SD
	Overall			CV%
				5.7%
	Inter-Assay (日差再現性)			
	サンプル	N	平均値	SD
	Overall			CV%
				9.4%
サンプルの種類	Saliva, Milk, Urine, Serum, Plasma, Cerebral Spinal Fluid			
アッセイタイプ	Sandwich (quantitative)			
検出感度	= 75 pg/ml			
検出範囲	0.122 ng/ml - 31.25 ng/ml			
添加回収試験	= 98 %			
全工程の試験時間	4h 00m			
ステップ	Multiple steps standard assay			
種交差性	交差種: Human			
製品の概要	Human PreAlbumin ELISA kit ((Transthyretin) is designed for the quantitative measurement of PreAlbumin concentrations in plasma, serum, milk, urine, saliva, CSF, cell culture, cell lysate, and tissue samples.			

A PreAlbumin specific antibody has been precoated onto 96-well plates and blocked. Standards or test samples are added to the wells and subsequently a PreAlbumin specific biotinylated detection antibody is added and then followed by washing with wash buffer. Streptavidin-Peroxidase Conjugate is added and unbound conjugates are washed away with wash buffer. TMB is then used to visualize Streptavidin-Peroxidase enzymatic reaction. TMB is catalyzed by Streptavidin-Peroxidase to produce a blue color product that changes into yellow after adding acidic stop solution. The density of yellow coloration is directly proportional to the amount of PreAlbumin captured in plate.

The entire kit may be stored at -20°C for long term storage before reconstitution - Avoid repeated freeze-thaw cycles.

試験プラットフォーム

Microplate

製品の特性

保存方法

Store at -20°C. Please refer to protocols.

内容	1 x 96 tests
100X Streptavidin-Peroxidase Conjugate	1 x 80µl
10X Diluent N Concentrate	1 x 30ml
20X Wash Buffer Concentrate	2 x 30ml
50X Biotinylated Human PreAlbumin Antibody	1 x 120µl
Chromogen Substrate	1 x 7ml
PreAlbumin Microplate (12 x 8 well strips)	1 unit
PreAlbumin Standard	1 vial
Sealing Tapes	3 units
Stop Solution	1 x 11ml

機能

Thyroid hormone-binding protein. Probably transports thyroxine from the bloodstream to the brain.

組織特異性

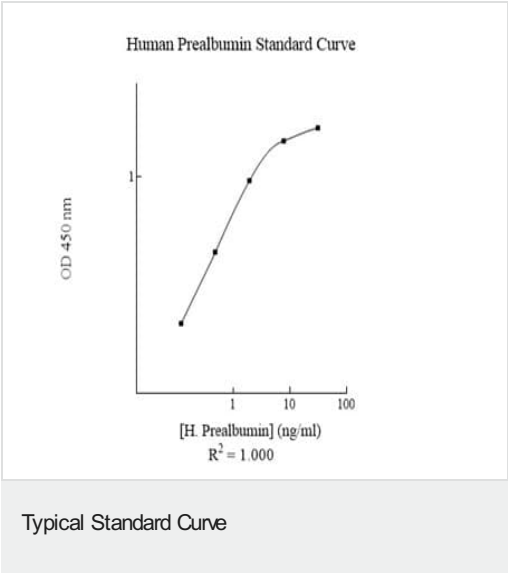
Detected in serum and cerebrospinal fluid (at protein level). Highly expressed in choroid plexus epithelial cells. Detected in retina pigment epithelium and liver.

関連疾患

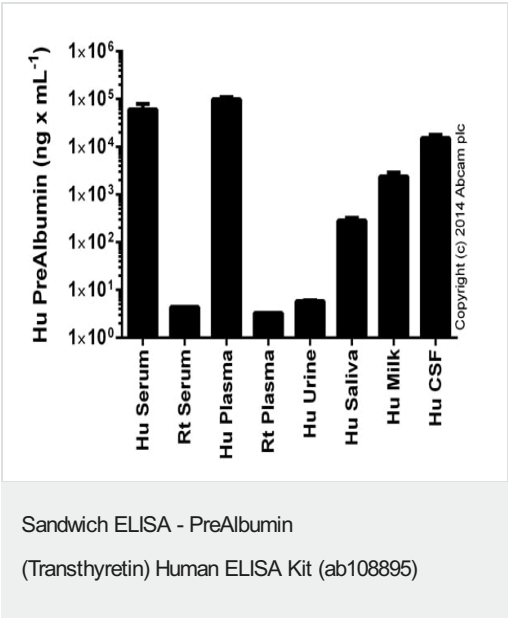
Defects in TTR are the cause of amyloidosis transthyretin-related (AMYL-TTR) [MIM:105210]. A hereditary generalized amyloidosis due to transthyretin amyloid deposition. Protein fibrils can form in different tissues leading to amyloid polyneuropathies, amyloidotic cardiomyopathy, carpal tunnel syndrome, systemic senile amyloidosis. The disease includes leptomeningeal amyloidosis that is characterized by primary involvement of the central nervous system. Neuropathologic examination shows amyloid in the walls of leptomeningeal vessels, in pia arachnoid, and subpial deposits. Some patients also develop vitreous amyloid deposition that leads to visual impairment (oculoleptomeningeal amyloidosis). Clinical features include seizures, stroke-like episodes, dementia, psychomotor deterioration, variable amyloid deposition in the vitreous humor. Defects in TTR are a cause of hyperthyroxinemia dysransthyretinemic euthyroidal (HTDE) [MIM:145680]. It is a condition characterized by elevation of total and free thyroxine in healthy, euthyroid persons without detectable binding protein abnormalities. Defects in TTR are a cause of carpal tunnel syndrome type 1 (CTS1) [MIM:115430]. It is a condition characterized by entrapment of the median nerve within the carpal tunnel. Symptoms include burning pain and paresthesias involving the ventral surface of the hand and fingers which may radiate proximally. Impairment of sensation in the distribution of the median nerve and thenar muscle atrophy may occur. This condition may be associated with repetitive occupational trauma, wrist injuries, amyloid neuropathies, rheumatoid arthritis.

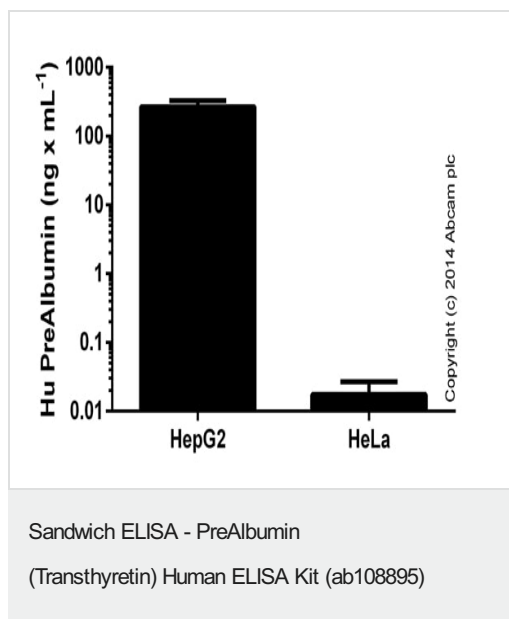
配列類似性	Belongs to the transthyretin family.
ドメイン	Each monomer has two 4-stranded beta sheets and the shape of a prolate ellipsoid. Antiparallel beta-sheet interactions link monomers into dimers. A short loop from each monomer forms the main dimer-dimer interaction. These two pairs of loops separate the opposed, convex beta-sheets of the dimers to form an internal channel.
細胞内局在	Secreted. Cytoplasm.

画像



Human PreAlbumin standard curve.





PreAlbumin detected in cell supernatants, results shown after background signal was subtracted (duplicates +/- SD).

Please note: All products are "FOR RESEARCH USE ONLY. NOT FOR USE IN DIAGNOSTIC PROCEDURES"

Our Abpromise to you: Quality guaranteed and expert technical support

- Replacement or refund for products not performing as stated on the datasheet
- Valid for 12 months from date of delivery
- Response to your inquiry within 24 hours
- We provide support in Chinese, English, French, German, Japanese and Spanish
- Extensive multi-media technical resources to help you
- We investigate all quality concerns to ensure our products perform to the highest standards

If the product does not perform as described on this datasheet, we will offer a refund or replacement. For full details of the Abpromise, please visit <https://www.abcam.co.jp/abpromise> or contact our technical team.

Terms and conditions

- Guarantee only valid for products bought direct from Abcam or one of our authorized distributors