

Human PMN Elastase ELISA Kit ab119553

★★★★★ [2 Abreviews](#) [28 References](#) [画像数 3](#)

製品の概要

製品名	Human PMN Elastase ELISA Kit				
検出方法	Colorimetric				
再現性	Intra-Assay (同時再現性)				
	サンプル	N	平均値	SD	CV%
	Overall				4.8%
	Inter-Assay (日差再現性)				
	サンプル	N	平均値	SD	CV%
	Overall				5.6%
サンプルの種類	Cell culture supernatant, Serum, Plasma				
アッセイタイプ	Sandwich (quantitative)				
検出感度	1.98 pg/ml				
検出範囲	0.16 ng/ml - 10 ng/ml				
添加回収試験	104 %				
	特定サンプルでの回収試験				
	サンプルの種類		平均 %	測定範囲	
	Plasma		104	96% - 110%	
ステップ	Multiple steps standard assay				
種交差性	交差種: Human				
製品の概要	Abcam's PMN Elastase Human <i>in vitro</i> ELISA (Enzyme-Linked Immunosorbent Assay) kit is designed for accurate quantitative measurement of Human PMN Elastase concentrations in Cell culture supernatants, plasma, exudate, bronchoalveolar lavage fluid, cerebrospinal fluid and seminal plasma.				

PMN Elastase specific antibodies have been precoated onto 96-well plates. Standards and test samples are added to the wells and along with an HRP-conjugated PMN Elastase detection antibody and the microplate is then incubated at room temperature. After the removal of unbound

proteins by washing, TMB is used to visualize the HRP enzymatic reaction. TMB is catalyzed by HRP to produce a blue color product that changes into yellow after adding acidic stop solution. The density of yellow coloration is directly proportional to the PMN Elastase amount of sample captured in plate.

The capture antibody in the Human PMN-Elastase ELISA kit is specific to PMN elastase, while the detection antibody is specific to alpha1-PI, hence the kit is specific to the PMN Elastase/alpha1-PI complex.

試験プラットフォーム

Microplate

製品の特長

保存方法

Please refer to protocols.

内容	1 x 96 tests
Adhesive Films	2 units
Control high	1 vial
Control low	1 vial
HRP-Conjugate anti-alpha1-PI polyclonal antibody	1 x 16ml
Human PMN Elastase - alpha1-PI complex Standard, lyophilized, (10 ng/mL upon reconstitution)	1 vial
Microplate coated with polyclonal antibody to Human PMN Elastase (12 x 8 wells)	1 unit
Sample Diluent	1 x 50ml
Stop Solution	1 x 7ml
TMB Substrate Solution	1 x 22ml
Wash Buffer Concentrate (10x)	1 x 50ml

機能

Modifies the functions of natural killer cells, monocytes and granulocytes. Inhibits C5a-dependent neutrophil enzyme release and chemotaxis.

組織特異性

Bone marrow cells.

関連疾患

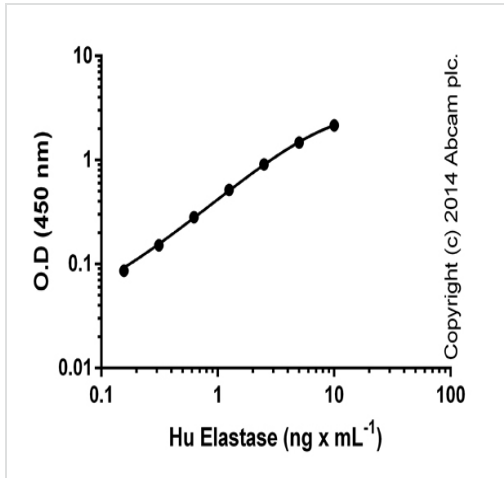
Defects in ELANE are a cause of cyclic haematopoiesis (CH) [MIM:162800]; also known as cyclic neutropenia. CH is an autosomal dominant disease in which blood-cell production from the bone marrow oscillates with 21-day periodicity. Circulating neutrophils vary between almost normal numbers and zero. During intervals of neutropenia, affected individuals are at risk for opportunistic infection. Monocytes, platelets, lymphocytes and reticulocytes also cycle with the same frequency.

Defects in ELANE are the cause of neutropenia severe congenital autosomal dominant type 1 (SCN1) [MIM:202700]. SCN1 is a disorder of hematopoiesis characterized by a maturation arrest of granulopoiesis at the level of promyelocytes with peripheral blood absolute neutrophil counts below $0.5 \times 10^9/l$ and early onset of severe bacterial infections.

配列類似性

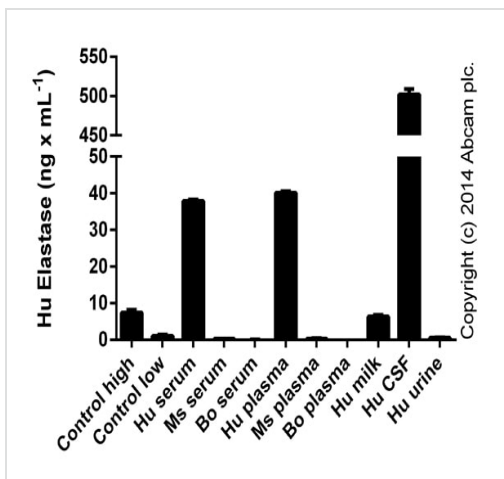
Belongs to the peptidase S1 family. Elastase subfamily.

画像



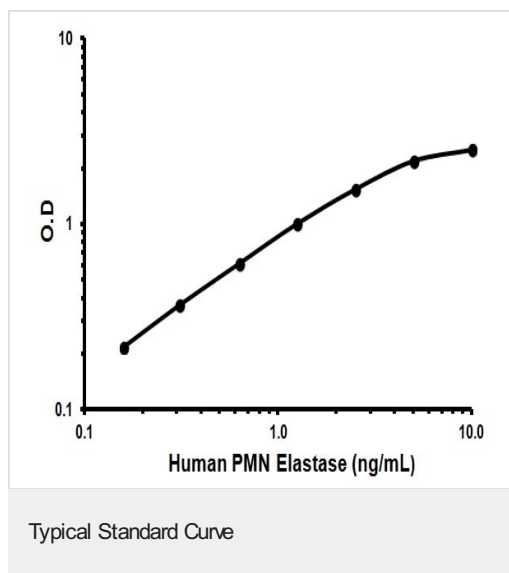
Standard curve with background signal subtracted (duplicates; +/- SD).

ELISA: PMN Elastase Human ELISA Kit (ab119553)



PMN elastase measured in the high control and low control (ab119553) and in biological fluids (dilution range 1/1-1/1000; duplicates +/- SD).

ELISA: PMN Elastase Human ELISA Kit (ab119553)



Representative Standard Curve using ab119553.

Please note: All products are "FOR RESEARCH USE ONLY. NOT FOR USE IN DIAGNOSTIC PROCEDURES"

Our Abpromise to you: Quality guaranteed and expert technical support

- Replacement or refund for products not performing as stated on the datasheet
- Valid for 12 months from date of delivery
- Response to your inquiry within 24 hours
- We provide support in Chinese, English, French, German, Japanese and Spanish
- Extensive multi-media technical resources to help you
- We investigate all quality concerns to ensure our products perform to the highest standards

If the product does not perform as described on this datasheet, we will offer a refund or replacement. For full details of the Abpromise, please visit <https://www.abcam.co.jp/abpromise> or contact our technical team.

Terms and conditions

- Guarantee only valid for products bought direct from Abcam or one of our authorized distributors