

Human OX40 ELISA Kit (TNFRSF4) ab231926

リコンビナント SimpleStep ELISA

1 References 画像数 8

製品の概要

製品名	Human OX40 ELISA Kit (TNFRSF4)			
検出方法	Colorimetric			
再現性	Intra-Assay (同時再現性)			
	サンプル	N	平均値	SD
	Cell medium	5		CV%
				3.6%
	Inter-Assay (日差再現性)			
	サンプル	N	平均値	SD
	Cell medium	3		CV%
				4.9%
サンプルの種類	Cell culture supernatant, Serum, Cell culture extracts, Hep Plasma, EDTA Plasma, Cit plasma			
アッセイタイプ	Sandwich (quantitative)			
検出感度	23 pg/ml			
検出範囲	46.9 pg/ml - 3000 pg/ml			
添加回収試験	特定サンプルでの回収試験			

サンプルの種類	平均 %	測定範囲
Serum	120	116% - 122%
Cell culture extracts	106	102% - 111%
Cell culture media	113	112% - 114%
Hep Plasma	120	116% - 121%
EDTA Plasma	115	112% - 117%
Cit plasma	116	113% - 117%

全工程の試験時間	1h 30m
ステップ	One step assay
種交差性	交差種: Human
製品の概要	<p>Human OX40 ELISA Kit (TNFRSF4) (ab231926) is a single-wash 90 min sandwich ELISA designed for the quantitative measurement of OX40 protein in cit plasma, edta plasma, hep plasma, serum, cell culture supernatant, and cell culture extracts. It uses our proprietary SimpleStep ELISA® technology. Quantitate Human OX40 with 23 pg/ml sensitivity.</p> <p>SimpleStep ELISA® technology employs capture antibodies conjugated to an affinity tag that is recognized by the monoclonal antibody used to coat our SimpleStep ELISA® plates. This approach to sandwich ELISA allows the formation of the antibody-analyte sandwich complex in a single step, significantly reducing assay time. See the SimpleStep ELISA® protocol summary in the image section for further details. Our SimpleStep ELISA® technology provides several benefits:</p> <ul style="list-style-type: none"> - Single-wash protocol reduces assay time to 90 minutes or less - High sensitivity, specificity and reproducibility from superior antibodies - Fully validated in biological samples - 96-wells plate breakable into 12 x 8 wells strips <p>A 384-well SimpleStep ELISA® microplate (ab203359) is available to use as an alternative to the 96-well microplate provided with SimpleStep ELISA® kits.</p>
特記事項	<p>Abcam has not and does not intend to apply for the REACH Authorisation of customers' uses of products that contain European Authorisation list (Annex XIV) substances.</p> <p>It is the responsibility of our customers to check the necessity of application of REACH Authorisation, and any other relevant authorisations, for their intended uses.</p>
試験プラットフォーム	Pre-coated microplate (12 x 8 well strips)

製品の特性

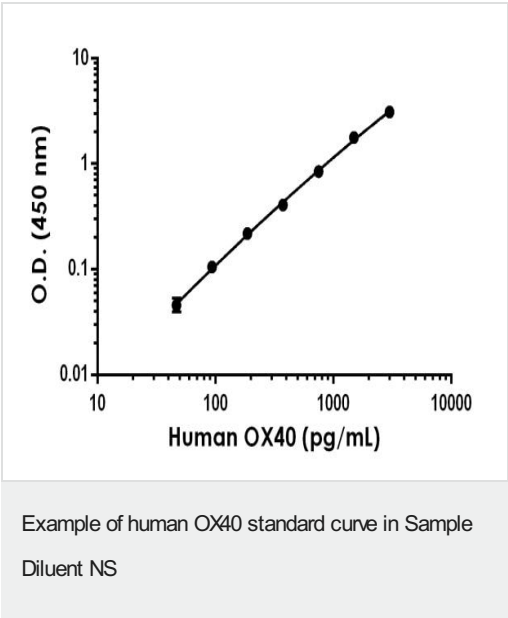
保存方法 Store at +4°C. Please refer to protocols.

内容	1 x 96 tests
10X Human OX40 Capture Antibody	1 x 600µl
10X Human OX40 Detector Antibody	1 x 600µl
10X Wash Buffer PT (ab206977)	1 x 20ml
5X Cell Extraction Buffer PTR (ab193970)	1 x 10ml
Antibody Diluent 4BI	1 x 6ml
Human OX40 Lyophilized Recombinant Protein	2 vials
Plate Seals	1 unit

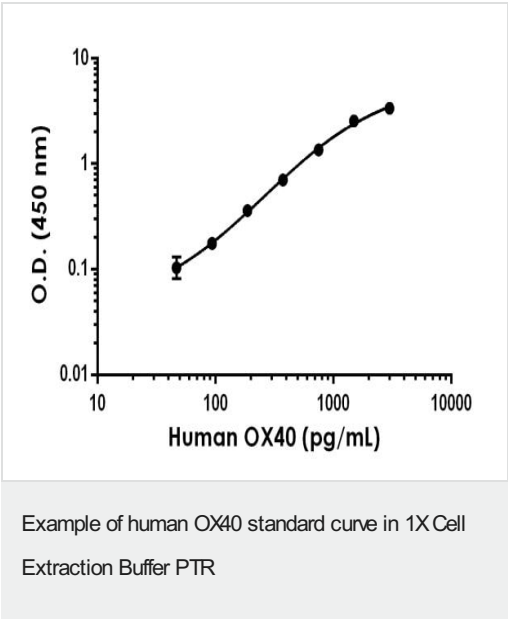
内容	1 x 96 tests
Sample Diluent NS (ab193972)	1 x 12ml
SimpleStep Pre-Coated 96-Well Microplate (ab206978)	1 unit
Stop Solution	1 x 12ml
TMB Development Solution	1 x 12ml

機能	Receptor for TNFSF4/OX40L/GP34.
配列類似性	Contains 4 TNFR-Cys repeats.
細胞内局在	Membrane.

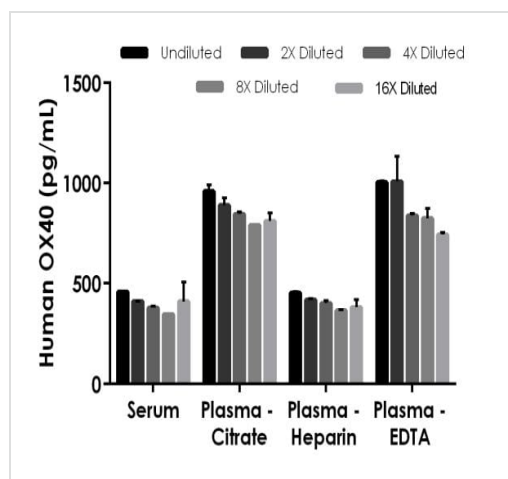
画像



Background-subtracted data values (mean +/- SD) are graphed.



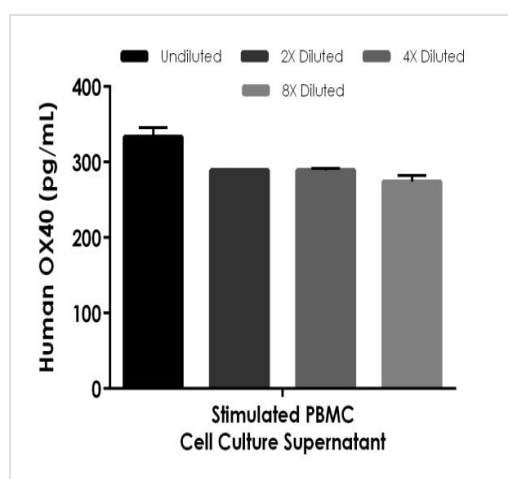
Background-subtracted data values (mean +/- SD) are graphed.



Interpolated concentrations of spiked OX40 in human serum and plasma samples

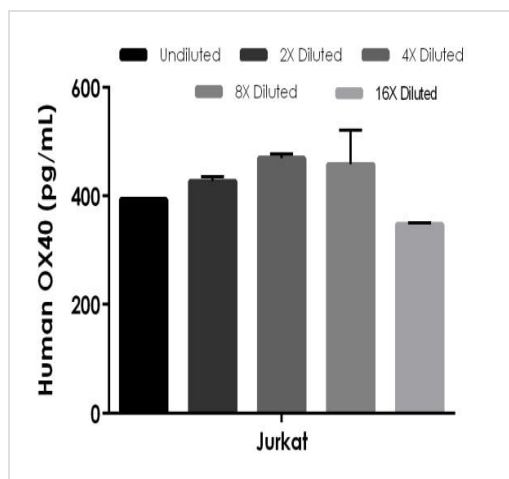
The concentrations of OX40 were measured in duplicates, interpolated from the OX40 standard curves and corrected for sample dilution. Undiluted samples are as follows: serum 12.5%, plasma (citrate) 25%, plasma (heparin) 12.5% and plasma (EDTA) 25%. The interpolated dilution factor corrected values are plotted (mean \pm SD, n=2).

Serum from ten individual healthy human female donors was measured in duplicate. No detectable levels of OX40 were measured.



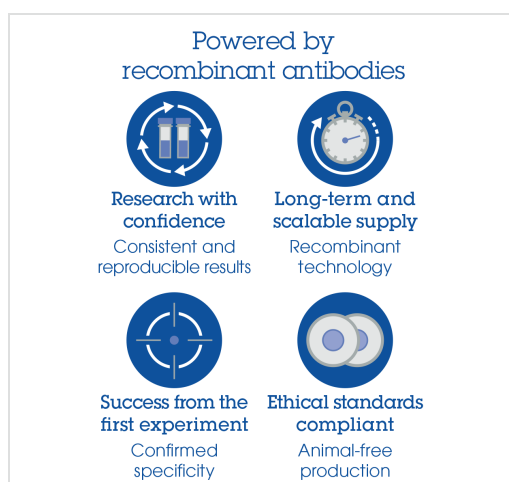
Interpolated concentrations of native OX40 in human cell culture supernatant sample

The concentrations of OX40 were measured in duplicates, interpolated from the OX40 standard curves and corrected for sample dilution. Undiluted samples are as follows: Stimulated PBMC cell culture supernatant 100%. The interpolated dilution factor corrected values are plotted (mean \pm SD, n=2). The mean OX40 concentration was determined to be 296 pg/mL in Stimulated PBMC cell culture supernatant, and undetectable in unstimulated and media controls.



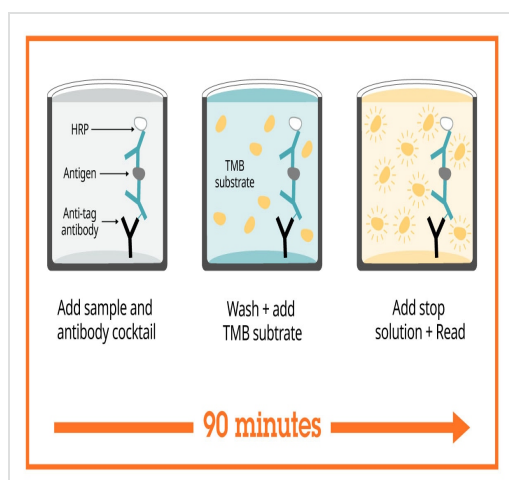
Interpolated concentrations of native OX40 in human Jurkat Cell Extract, sample based on a 4,000 µg/mL extract load

The concentrations of OX40 were measured in duplicate and interpolated from the OX40 standard curve and corrected for sample dilution. The interpolated dilution factor corrected values are plotted (mean +/- SD, n=2). The mean OX40 concentration was determined to be 419 pg/mL in Jurkat Cell Extract.



Sandwich ELISA - Human OX40 ELISA Kit
(TNFRSF4) (ab231926)

To learn more about the advantages of recombinant antibodies see [here](#).



Sandwich ELISA - Human OX40 ELISA Kit
(TNFRSF4) (ab231926)

SimpleStep ELISA technology allows the formation of the antibody-antigen complex in one single step, reducing assay time to 90 minutes. Add samples or standards and antibody mix to wells all at once, incubate, wash, and add your final substrate. See protocol for a detailed step-by-step guide.

**Get more done with
SimpleStep ELISA**



Easy to use
Single-wash 90-minute
protocol



Flexible
Matched antibody pairs
available



Precision antibodies
High sensitivity, specificity
and reproducibility



Scalable
Now in 10-pack and
384-well formats

To learn more about the advantages of SimpleStep ELISA® kits
see [here](#).

Sandwich ELISA - Human OX40 ELISA Kit
(TNFRSF4) (ab231926)

Please note: All products are "FOR RESEARCH USE ONLY. NOT FOR USE IN DIAGNOSTIC PROCEDURES"

Our Abpromise to you: Quality guaranteed and expert technical support

- Replacement or refund for products not performing as stated on the datasheet
- Valid for 12 months from date of delivery
- Response to your inquiry within 24 hours
- We provide support in Chinese, English, French, German, Japanese and Spanish
- Extensive multi-media technical resources to help you
- We investigate all quality concerns to ensure our products perform to the highest standards

If the product does not perform as described on this datasheet, we will offer a refund or replacement. For full details of the Abpromise, please visit <https://www.abcam.co.jp/abpromise> or contact our technical team.

Terms and conditions

- Guarantee only valid for products bought direct from Abcam or one of our authorized distributors