

Human NFAT2 ELISA Kit (NFATC1) ab277704

リコンビナント SimpleStep ELISA

画像数 5

製品の概要

製品名	Human NFAT2 ELISA Kit (NFATC1)				
検出方法	Colorimetric				
再現性	Intra-Assay (同時再現性)				
	サンプル	N	平均値	SD	CV%
	Extract	8			5.9%
	Inter-Assay (日差再現性)				
	サンプル	N	平均値	SD	CV%
	Extract	3			6.87%
サンプルの種類	Cell Lysate				
アッセイタイプ	Sandwich (quantitative)				
検出感度	4 pg/ml				
検出範囲	19.53 pg/ml - 1250 pg/ml				
添加回収試験	特定サンプルでの回収試験				
	サンプルの種類		平均 %	測定範囲	
	Cell Lysate		91	80% - 96%	
全工程の試験時間	1h 30m				
ステップ	One step assay				
種交差性	交差種: Human				
製品の概要	Human NFAT2 ELISA kit (ab277704) is a single-wash 90 min sandwich ELISA designed for the				

SimpleStep ELISA® technology employs capture antibodies conjugated to an affinity tag that is

recognized by the monoclonal antibody used to coat our SimpleStep ELISA® plates. This approach to sandwich ELISA allows the formation of the antibody-analyte sandwich complex in a single step, significantly reducing assay time. See the SimpleStep ELISA® protocol summary in the image section for further details. Our SimpleStep ELISA® technology provides several benefits:

- Single-wash protocol reduces assay time to 90 minutes or less
- High sensitivity, specificity and reproducibility from superior antibodies
- Fully validated in biological samples
- 96-wells plate breakable into 12 x 8 wells strips

A 384-well SimpleStep ELISA® microplate ([ab203359](#)) is available to use as an alternative to the 96-well microplate provided with SimpleStep ELISA® kits.

特記事項

Nuclear factor of activated T-cells, cytoplasmic 1, also known as NFATC1 or NFAT2, is a transcription factor that plays a key role in regulating the immune response. With its complex partners, NFAT2 regulates the expression of cytokines and differentiation of T-lymphocytes. This protein is upregulated in certain type of cancers including chronic lymphocytic leukemia. The immunogen with which the antibodies for this kit were raised share high sequence identity with mouse and rat, and are therefore, expected to cross-react.

Abcam has not and does not intend to apply for the REACH Authorisation of customers' uses of products that contain European Authorisation list (Annex XIV) substances.

It is the responsibility of our customers to check the necessity of application of REACH Authorisation, and any other relevant authorisations, for their intended uses.

試験プラットフォーム

Pre-coated microplate (12 x 8 well strips)

製品の特性

保存方法

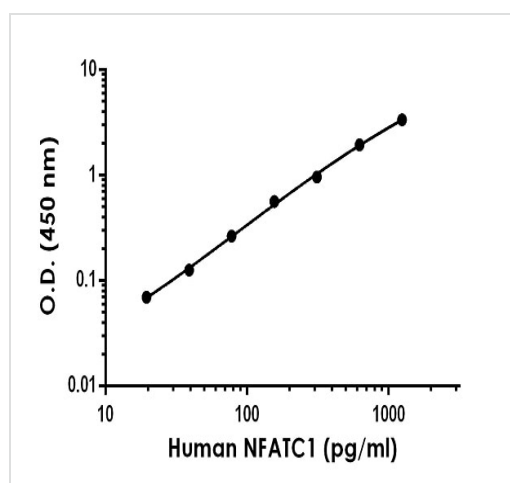
Store at +4°C. Please refer to protocols.

内容	1 x 96 tests
10X Human NFAT2 (NFATC1) Capture Antibody	1 x 600µl
10X Human NFAT2 (NFATC1) Detector Antibody	1 x 600µl
10X Wash Buffer PT (ab206977)	1 x 20ml
5X Cell Extraction Buffer PTR (ab193970)	1 x 10ml
Antibody Diluent 4BI	1 x 6ml
Human NFAT2 (NFATC1) Lyophilized Recombinant Protein	2 vials
Plate Seals	1 unit
Sample Diluent NS (ab193972)	1 x 12ml
SimpleStep Pre-Coated 96-Well Microplate (ab206978)	1 unit

内容	1 x 96 tests
Stop Solution	1 x 12ml
TMB Development Solution	1 x 12ml

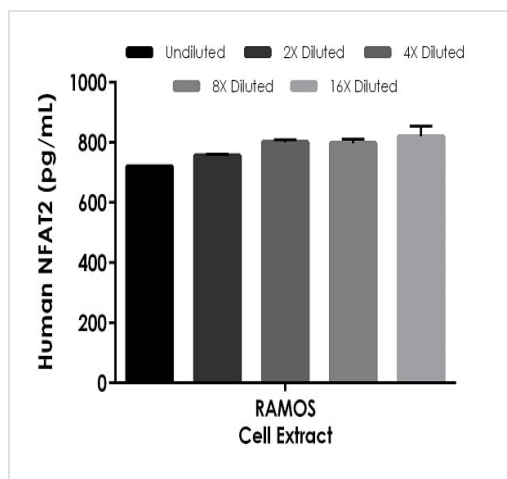
機能	Plays a role in the inducible expression of cytokine genes in T-cells, especially in the induction of the IL-2 or IL-4 gene transcription. Also controls gene expression in embryonic cardiac cells. Could regulate not only the activation and proliferation but also the differentiation and programmed death of T-lymphocytes as well as lymphoid and non-lymphoid cells.
組織特異性	Expressed in thymus, peripheral leukocytes as T-cells and spleen. Isoforms A are preferentially expressed in effector T-cells (thymus and peripheral leukocytes) whereas isoforms B and isoforms C are preferentially expressed in naive T-cells (spleen). Isoforms B are expressed in naive T-cells after first antigen exposure and isoforms A are expressed in effector T-cells after second antigen exposure.
配列類似性	Contains 1 RHD (Rel-like) domain.
ドメイン	Rel Similarity Domain (RSD) allows DNA-binding and cooperative interactions with AP1 factors. The N-terminal transactivation domain (TAD-A) binds to and is activated by Cbp/p300. The dephosphorylated form contains two unmasked nuclear localization signals (NLS), which allow translocation of the protein to the nucleus. Isoforms C have a C-terminal part with an additional trans-activation domain, TAD-B, which acts as a transcriptional activator. Isoforms B have a shorter C-terminal part without complete TAD-B which acts as a transcriptional repressor.
翻訳後修飾	Phosphorylated by NFATC-kinase; dephosphorylated by calcineurin.
細胞内局在	Cytoplasm. Nucleus. Cytoplasmic for the phosphorylated form and nuclear after activation that is controlled by calcineurin-mediated dephosphorylation. Rapid nuclear exit of NFATC is thought to be one mechanism by which cells distinguish between sustained and transient calcium signals. The subcellular localization of NFATC plays a key role in the regulation of gene transcription.

画像



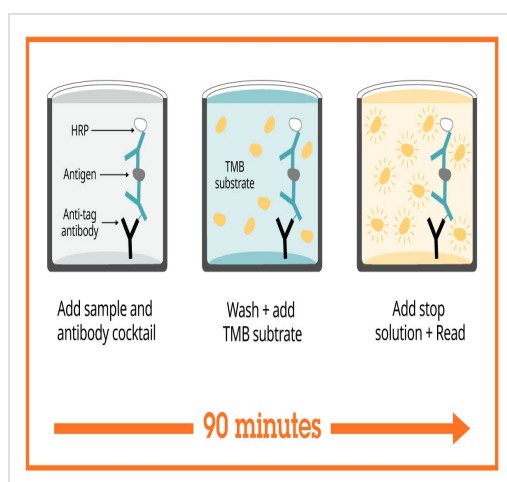
Example of human NFAT2 standard curve in 1X Cell Extraction Buffer PTR.

The NFAT2 standard curve was prepared as described in Section 10. Raw data values are shown in the table. Background-subtracted data values (mean \pm SD) are graphed.



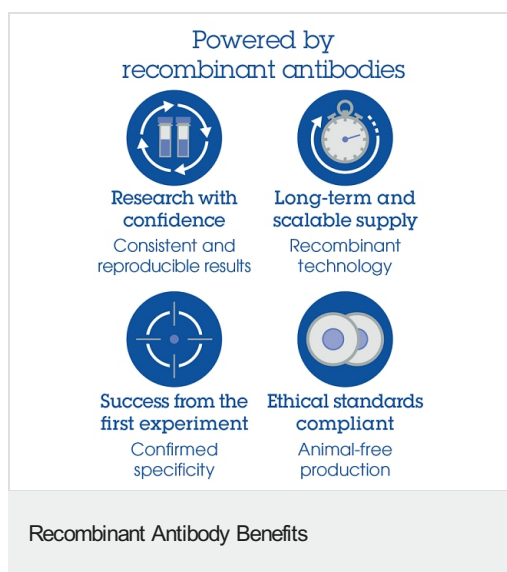
Interpolated concentrations of native NFAT2 in human RAMOS Cell Extract based on a 1,000 µg/mL extract load.

The concentrations of NFAT2 were measured in duplicate and interpolated from the NFAT2 standard curve and corrected for sample dilution. The interpolated dilution factor corrected values are plotted (mean \pm SD, n=2). The mean NFAT2 concentration was determined to be 779 pg/mL.



Sandwich ELISA - Human NFAT2 ELISA Kit
(NFATC1) (ab277704)

SimpleStep ELISA technology allows the formation of the antibody-antigen complex in one single step, reducing assay time to 90 minutes. Add samples or standards and antibody mix to wells all at once, incubate, wash, and add your final substrate. See protocol for a detailed step-by-step guide.



To learn more about the advantages of recombinant antibodies see [here](#).

**Get more done with
SimpleStep ELISA**



Easy to use

Single-wash 90-minute
protocol



Flexible

Matched antibody pairs
available



Precision antibodies

High sensitivity, specificity
and reproducibility



Scalable

Now in 10-pack and
384-well formats

Sandwich ELISA - Human NFAT2 ELISA Kit
(NFATC1) (ab277704)

To learn more about the advantages of SimpleStep ELISA® kits
see [here](#).

Please note: All products are "FOR RESEARCH USE ONLY. NOT FOR USE IN DIAGNOSTIC PROCEDURES"

Our Abpromise to you: Quality guaranteed and expert technical support

- Replacement or refund for products not performing as stated on the datasheet
- Valid for 12 months from date of delivery
- Response to your inquiry within 24 hours
- We provide support in Chinese, English, French, German, Japanese and Spanish
- Extensive multi-media technical resources to help you
- We investigate all quality concerns to ensure our products perform to the highest standards

If the product does not perform as described on this datasheet, we will offer a refund or replacement. For full details of the Abpromise, please visit <https://www.abcam.co.jp/abpromise> or contact our technical team.

Terms and conditions

- Guarantee only valid for products bought direct from Abcam or one of our authorized distributors