

Human N-Cadherin ELISA Kit ab254512

リコンビナント SimpleStep ELISA

5 References 画像数 6

製品の概要

製品名	Human N-Cadherin ELISA Kit			
検出方法	Colorimetric			
再現性	Intra-Assay (同時再現性)			
	サンプル	N	平均値	SD
	Serum	8		CV%
				4.4%
	Inter-Assay (日差再現性)			
	サンプル	N	平均値	SD
	Serum	3		CV%
				9.8%
サンプルの種類	Cell culture supernatant, Serum, Cell culture extracts, Hep Plasma, EDTA Plasma			
アッセイタイプ	Sandwich (quantitative)			
検出感度	41 pg/ml			
検出範囲	156.25 pg/ml - 10000 pg/ml			
添加回収試験	特定サンプルでの回収試験			

サンプルの種類	平均 %	測定範囲
Cell culture supernatant	92	81% - 102%
Serum	114	113% - 115%
Cell culture extracts	97	84% - 108%
Hep Plasma	92	89% - 95%
EDTA Plasma	108	106% - 109%

全工程の試験時間	1h 30m
ステップ	One step assay

## 種交差性

交差種: Cow, Human

## 製品の概要

Human N-Cadherin ELISA Kit (ab254512) is a single-wash 90 min sandwich ELISA designed for the quantitative measurement of N-Cadherin protein in edta plasma, hep plasma, cell culture extracts, serum, and cell culture supernatant. It uses our proprietary SimpleStep ELISA® technology. Quantitate Human N-Cadherin with 41 pg/ml sensitivity.

SimpleStep ELISA® technology employs capture antibodies conjugated to an affinity tag that is recognized by the monoclonal antibody used to coat our SimpleStep ELISA® plates. This approach to sandwich ELISA allows the formation of the antibody-analyte sandwich complex in a single step, significantly reducing assay time. See the SimpleStep ELISA® protocol summary in the image section for further details. Our SimpleStep ELISA® technology provides several benefits:

- Single-wash protocol reduces assay time to 90 minutes or less
- High sensitivity, specificity and reproducibility from superior antibodies
- Fully validated in biological samples
- 96-wells plate breakable into 12 x 8 wells strips

A 384-well SimpleStep ELISA® microplate ([ab203359](#)) is available to use as an alternative to the 96-well microplate provided with SimpleStep ELISA® kits.

## 特記事項

N-Cadherin is a member of the calcium-dependent adhesion molecule family of classical cadherins encoded by the *CDH2* gene. This transmembrane, homophilic glycoprotein often can be found concentrated at adherens junctions in most cell types. The function of N-Cadherin depends much on the cellular contents such as cancer metastasis, interactions with catenins in neural tissues, and maintaining the structural integrity of the heart by mediating strong adhesion between cardiomyocytes. This kit is raised as an extracellular fragment of N-Cadherin.

Abcam has not and does not intend to apply for the REACH Authorisation of customers' uses of products that contain European Authorisation list (Annex XIV) substances.

It is the responsibility of our customers to check the necessity of application of REACH Authorisation, and any other relevant authorisations, for their intended uses.

## 試験プラットフォーム

Pre-coated microplate (12 x 8 well strips)

## 製品の特性

### 保存方法

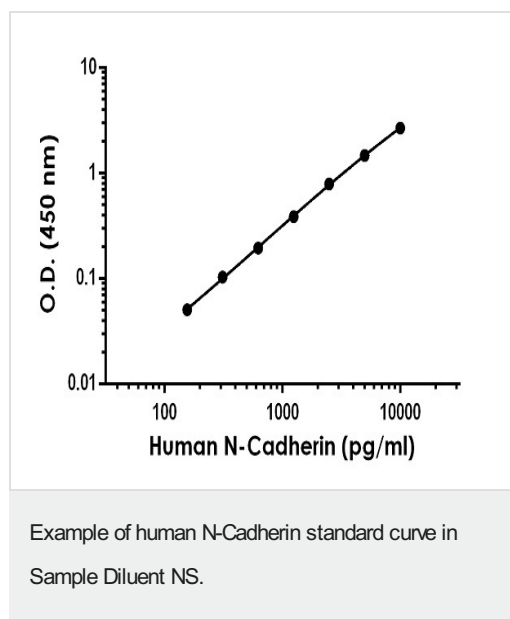
Store at +4°C. Please refer to protocols.

内容	1 x 96 tests
10X Human N-Cadherin Capture Antibody	1 x 600µl
10X Human N-Cadherin Detector Antibody	2 vials
10X Wash Buffer PT (ab206977)	1 x 20ml
5X Cell Extraction Buffer PTR (ab193970)	1 x 10ml
Antibody Diluent 5BI	1 x 6ml

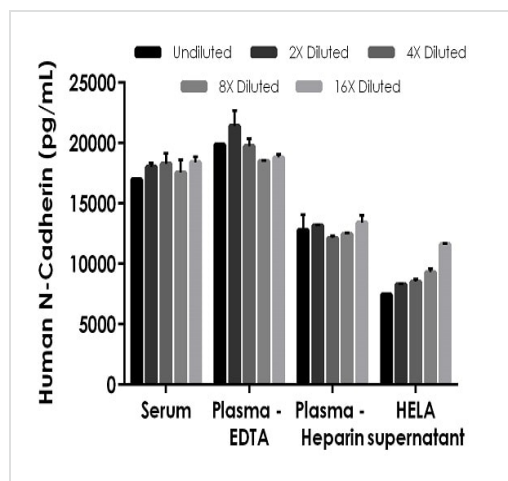
内容	1 x 96 tests
Human N-Cadherin Lyophilized Recombinant Protein	2 vials
Plate Seals	1 unit
Sample Diluent NS (ab193972)	1 x 50ml
SimpleStep Pre-Coated 96-Well Microplate (ab206978)	1 unit
Stop Solution	1 x 12ml
TMB Development Solution	1 x 12ml

<b>機能</b>	Cadherins are calcium dependent cell adhesion proteins. They preferentially interact with themselves in a homophilic manner in connecting cells; cadherins may thus contribute to the sorting of heterogeneous cell types. CDH2 may be involved in neuronal recognition mechanism. In hippocampal neurons, may regulate dendritic spine density.
<b>配列類似性</b>	Contains 5 cadherin domains.
<b>細胞内局在</b>	Cell membrane.

## 画像

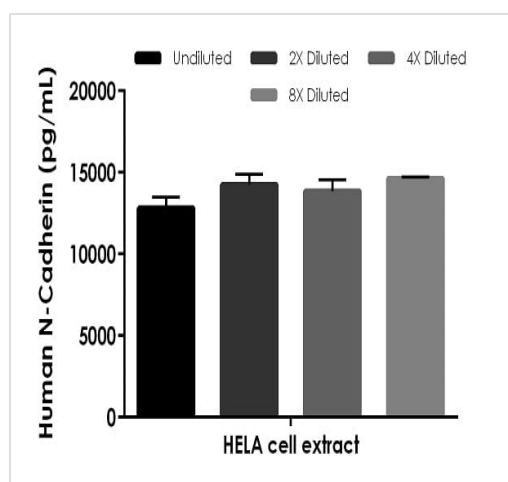


The N-Cadherin standard curve was prepared as described in Section 10. Raw data values are shown in the table. Background-subtracted data values (mean  $\pm$  SD) are graphed.



Interpolated concentrations of native N-Cadherin in human serum, plasma and cell culture supernatant samples.

The concentrations of N-Cadherin were measured in duplicates, interpolated from the N-Cadherin standard curves and corrected for sample dilution. Undiluted samples are as follows: serum 50%, plasma (EDTA) 50%, plasma (heparin) 50% and HeLa cell culture supernatant 50%. The interpolated dilution factor corrected values are plotted (mean  $\pm$  SD,  $n=2$ ). The mean N-Cadherin concentration was determined to be 17,850 pg/mL in serum, 19,670 pg/mL in plasma (EDTA) and 12,801 pg/mL in plasma (heparin) and 8391 pg/mL in HeLa cell culture supernatant.



Interpolated concentrations of native N-Cadherin in human HeLa cell extract based on a 500  $\mu$ g/mL extract load.

The concentrations of N-Cadherin were measured in duplicate and interpolated from the N-Cadherin standard curve and corrected for sample dilution. The interpolated dilution factor corrected values are plotted (mean  $\pm$  SD,  $n=2$ ). The mean N-Cadherin concentration was determined to be 13,895 pg/mL in HeLa cell extract.

Powered by  
recombinant antibodies



**Research with confidence**  
Consistent and reproducible results



**Long-term and scalable supply**  
Recombinant technology



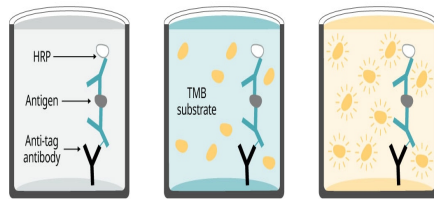
**Success from the first experiment**  
Confirmed specificity



**Ethical standards compliant**  
Animal-free production

Sandwich ELISA - Human N-Cadherin ELISA Kit  
(ab254512)

To learn more about the advantages of recombinant antibodies see [here](#).



Add sample and antibody cocktail      Wash + add TMB substrate      Add stop solution + Read

90 minutes

Sandwich ELISA - Human N-Cadherin ELISA Kit  
(ab254512)

SimpleStep ELISA technology allows the formation of the antibody-antigen complex in one single step, reducing assay time to 90 minutes. Add samples or standards and antibody mix to wells all at once, incubate, wash, and add your final substrate. See protocol for a detailed step-by-step guide.

**Get more done with  
SimpleStep ELISA**



**Easy to use**

Single-wash 90-minute  
protocol



**Flexible**

Matched antibody pairs  
available



**Precision antibodies**

High sensitivity, specificity  
and reproducibility



**Scalable**

Now in 10-pack and  
384-well formats

To learn more about the advantages of SimpleStep ELISA® kits  
see [here](#).

Sandwich ELISA - Human N-Cadherin ELISA Kit  
(ab254512)

**Please note:** All products are "FOR RESEARCH USE ONLY. NOT FOR USE IN DIAGNOSTIC PROCEDURES"

### Our Abpromise to you: Quality guaranteed and expert technical support

---

- Replacement or refund for products not performing as stated on the datasheet
- Valid for 12 months from date of delivery
- Response to your inquiry within 24 hours
- We provide support in Chinese, English, French, German, Japanese and Spanish
- Extensive multi-media technical resources to help you
- We investigate all quality concerns to ensure our products perform to the highest standards

If the product does not perform as described on this datasheet, we will offer a refund or replacement. For full details of the Abpromise, please visit <https://www.abcam.co.jp/abpromise> or contact our technical team.

### Terms and conditions

---

- Guarantee only valid for products bought direct from Abcam or one of our authorized distributors