

Human MMP9 ELISA Kit (lyophilized) ab100610

★★★★★ [2 Abreviews](#) [42 References](#) [画像数 2](#)

製品の概要

製品名	Human MMP9 ELISA Kit (lyophilized)
検出方法	Colorimetric
サンプルの種類	Cell culture supernatant, Serum, Plasma
アッセイタイプ	Sandwich (quantitative)
検出感度	< 10 pg/ml
検出範囲	8.23 pg/ml - 6000 pg/ml
添加回収試験	95 %

特定サンプルでの回収試験

サンプルの種類	平均 %	測定範囲
Cell culture supernatant	95.38	84% - 104%
Serum	96.23	84% - 103%
Plasma	94.64	83% - 102%

ステップ Multiple steps standard assay

種交差性 交差種: Human

製品の概要 Abcam's MMP9 Human ELISA (Enzyme-Linked Immunosorbent Assay) kit is an *in vitro* enzyme-linked immunosorbent assay for the quantitative measurement of Human MMP9 pro and active forms in serum, plasma (Collect plasma using heparin as an anticoagulant. EDTA and Citrate are not recommended), and cell culture supernatants.

This assay employs an antibody specific for Human MMP9 coated on a 96- well plate. Standards and samples are pipetted into the wells and MMP9 present in a sample is bound to the wells by the immobilized antibody. The wells are washed and biotinylated anti-Human MMP9 antibody is added. After washing away unbound biotinylated antibody, HRP-conjugated streptavidin is pipetted to the wells. The wells are again washed, a TMB substrate solution is added to the wells and color develops in proportion to the amount of MMP9 bound. The Stop Solution changes the color from blue to yellow, and the intensity of the color is measured at 450 nm.

特記事項 Optimisation may be required with urine samples.

試験プラットフォーム Microplate

製品の特性

保存方法

Store at -20°C. Please refer to protocols.

内容	1 x 96 tests
20X Wash Buffer	1 x 25ml
400X HRP-Streptavidin Concentrate	1 x 200µl
5X Assay Diluent	1 x 15ml
Biotinylated anti-Human MMP9	2 vials
MMP9 Microplate (12 x 8 wells)	1 unit
Recombinant Human MMP9 Standard (lyophilized)	2 vials
Stop Solution	1 x 8ml
TMB One-Step Substrate Reagent	1 x 12ml

機能

May play an essential role in local proteolysis of the extracellular matrix and in leukocyte migration. Could play a role in bone osteoclastic resorption. Cleaves KiSS1 at a Gly-Leu bond. Cleaves type IV and type V collagen into large C-terminal three quarter fragments and shorter N-terminal one quarter fragments. Degrades fibronectin but not laminin or Pz-peptide.

組織特異性

Produced by normal alveolar macrophages and granulocytes.

関連疾患

Intervertebral disc disease
Metaphyseal anadysplasia 2

配列類似性

Belongs to the peptidase M10A family.
Contains 3 fibronectin type-II domains.
Contains 4 hemopexin repeats.

ドメイン

The conserved cysteine present in the cysteine-switch motif binds the catalytic zinc ion, thus inhibiting the enzyme. The dissociation of the cysteine from the zinc ion upon the activation-peptide release activates the enzyme.

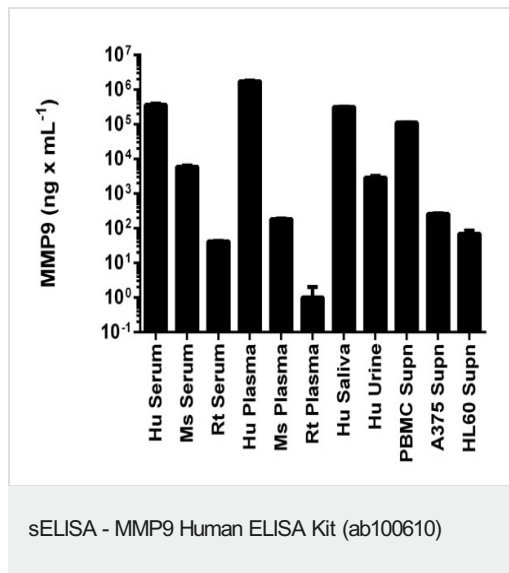
翻訳後修飾

Processing of the precursor yields different active forms of 64, 67 and 82 kDa. Sequentially processing by MMP3 yields the 82 kDa matrix metalloproteinase-9.
N- and O-glycosylated.

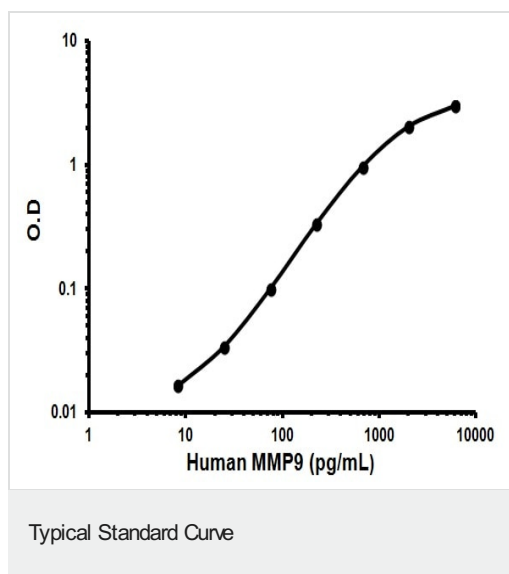
細胞内局在

Secreted, extracellular space, extracellular matrix.

画像



MMP9 measured in biological fluids and cell culture medium with background signal subtracted (duplicates +/- SD).



Representative Standard Curve using ab100610.

Please note: All products are "FOR RESEARCH USE ONLY. NOT FOR USE IN DIAGNOSTIC PROCEDURES"

Our Abpromise to you: Quality guaranteed and expert technical support

- Replacement or refund for products not performing as stated on the datasheet
- Valid for 12 months from date of delivery
- Response to your inquiry within 24 hours
- We provide support in Chinese, English, French, German, Japanese and Spanish
- Extensive multi-media technical resources to help you

- We investigate all quality concerns to ensure our products perform to the highest standards

If the product does not perform as described on this datasheet, we will offer a refund or replacement. For full details of the Abpromise, please visit <https://www.abcam.co.jp/abpromise> or contact our technical team.

Terms and conditions

- Guarantee only valid for products bought direct from Abcam or one of our authorized distributors