

Human MIP1a ELISA Kit ab214569

リコンビナント SimpleStep ELISA

1 References 画像数 7

製品の概要

製品名	Human MIP1a ELISA Kit				
検出方法	Colorimetric				
再現性	Intra-Assay (同時再現性)				
	サンプル	N	平均値	SD	CV%
	Overall	5			1.9%
	Inter-Assay (日差再現性)				
	サンプル	N	平均値	SD	CV%
	Overall	3			7.2%
サンプルの種類	Cell culture supernatant, Serum, Hep Plasma, EDTA Plasma, Cit plasma				
アッセイタイプ	Sandwich (quantitative)				
検出感度	0.4 pg/ml				
検出範囲	1.56 pg/ml - 100 pg/ml				
添加回収試験	特定サンプルでの回収試験				
	サンプルの種類	平均 %		測定範囲	
	Cell culture supernatant	101		100% - 102%	
	Serum	99		96% - 101%	
	Hep Plasma	97		94% - 100%	
	EDTA Plasma	100		92% - 105%	
	Cit plasma	95		91% - 101%	
全工程の試験時間	1h 30m				
ステップ	One step assay				

種交差性

交差種: Human

非交差種: Cow

製品の概要

Human MIP1a ELISA Kit (ab214569) is a single-wash 90 min sandwich ELISA designed for the quantitative measurement of MIP1a protein in cell culture supernatant, serum, cit plasma, edta plasma, and hep plasma. It uses our proprietary SimpleStep ELISA® technology. Quantitate Human MIP1a with 0.4 pg/ml sensitivity.

SimpleStep ELISA® technology employs capture antibodies conjugated to an affinity tag that is recognized by the monoclonal antibody used to coat our SimpleStep ELISA® plates. This approach to sandwich ELISA allows the formation of the antibody-analyte sandwich complex in a single step, significantly reducing assay time. See the SimpleStep ELISA® protocol summary in the image section for further details. Our SimpleStep ELISA® technology provides several benefits:

- Single-wash protocol reduces assay time to 90 minutes or less
- High sensitivity, specificity and reproducibility from superior antibodies
- Fully validated in biological samples
- 96-wells plate breakable into 12 x 8 wells strips

A 384-well SimpleStep ELISA® microplate (**ab203359**) is available to use as an alternative to the 96-well microplate provided with SimpleStep ELISA® kits.

特記事項

Macrophage Inflammatory Protein 1-alpha (MIP1a, also known as CCL3) is a monokine with both inflammatory and chemokine properties. MIP-1-alpha can bind to CCR1, CCR4 and CCR5. In addition, it is one of the major HIV-suppressive factors produced by CD8+ T-cells. Recombinant MIP-1-alpha induces a dose-dependent inhibition of different strains of HIV-1, HIV-2, and simian immunodeficiency virus (SIV).

試験プラットフォーム

Pre-coated microplate (12 x 8 well strips)

製品の特性

保存方法

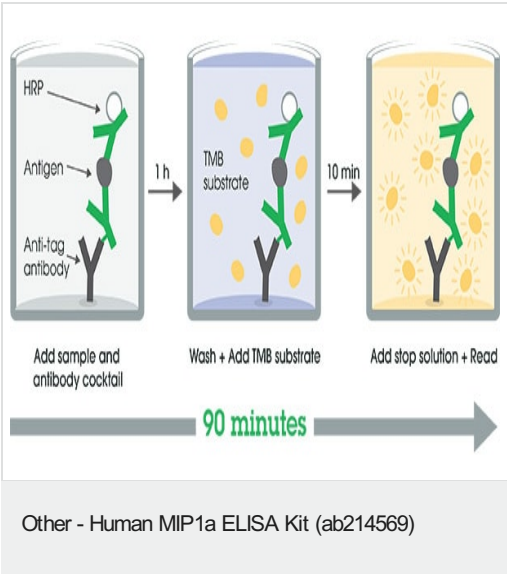
Store at +4°C. Please refer to protocols.

内容	1 x 96 tests
10X Wash Buffer PT (ab206977)	1 x 20ml
Antibody Diluent CPI - HAMA Blocker (ab193969)	1 x 6ml
10X Human MIP1a Capture Antibody	1 x 600µl
10X Human MIP1a Detector Antibody	1 x 600µl
Human MIP1a Lyophilized Recombinant Protein	2 vials
Plate Seals	1 unit
SimpleStep Pre-Coated 96-Well Microplate (ab206978)	1 unit
Sample Diluent NS (ab193972)	1 x 50ml

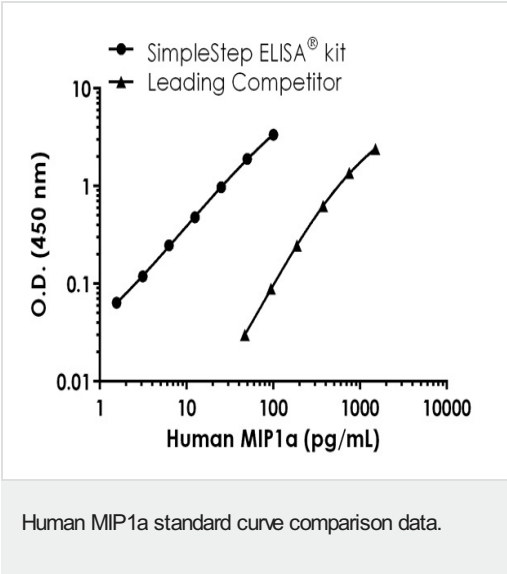
内容	1 x 96 tests
Stop Solution	1 x 12ml
TMB Development Solution	1 x 12ml

機能	Monokine with inflammatory and chemokinetic properties. Binds to CCR1, CCR4 and CCR5. One of the major HIV-suppressive factors produced by CD8+ T-cells. Recombinant MIP-1-alpha induces a dose-dependent inhibition of different strains of HIV-1, HIV-2, and simian immunodeficiency virus (SV).
配列類似性	Belongs to the intercrine beta (chemokine CC) family.
翻訳後修飾	N-terminal processed form LD78-alpha(4-69) is produced by proteolytic cleavage after secretion from HTLV1-transformed T-cells.
細胞内局在	Secreted.

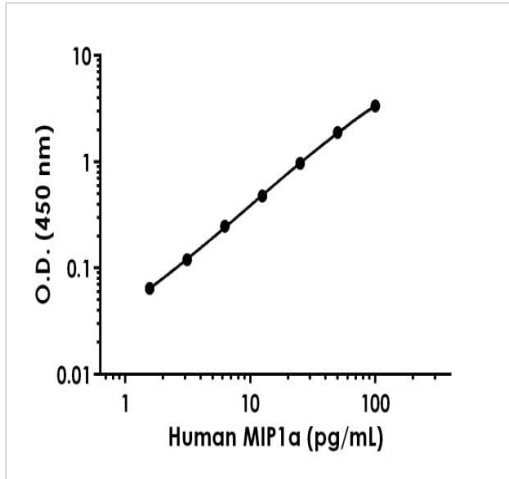
画像



SimpleStep ELISA technology allows the formation of the antibody-antigen complex in one single step, reducing assay time to 90 minutes. Add samples or standards and antibody mix to wells all at once, incubate, wash, and add your final substrate. See protocol for a detailed step-by-step guide.

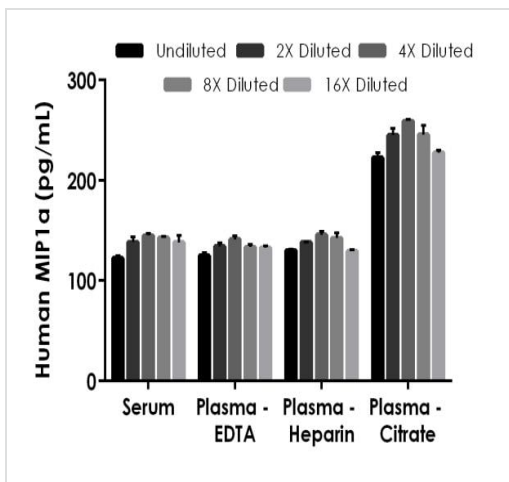


Standard curve comparison between human MIP1a SimpleStep ELISA[®] kit and traditional ELISA kit from leading competitor. SimpleStep ELISA kit shows a 24-fold increase in sensitivity.



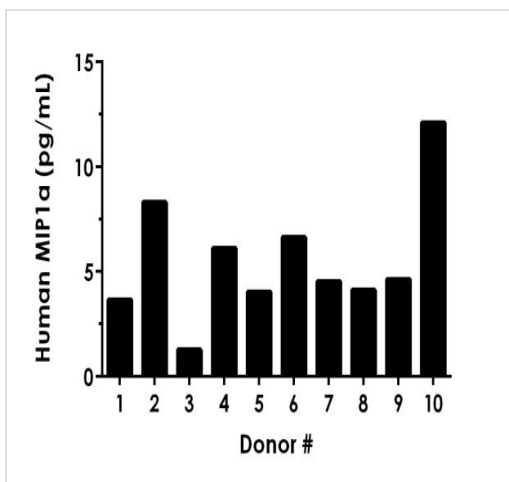
Example of MIP1a standard curve.

Background-subtracted data values (mean \pm SD) are graphed.



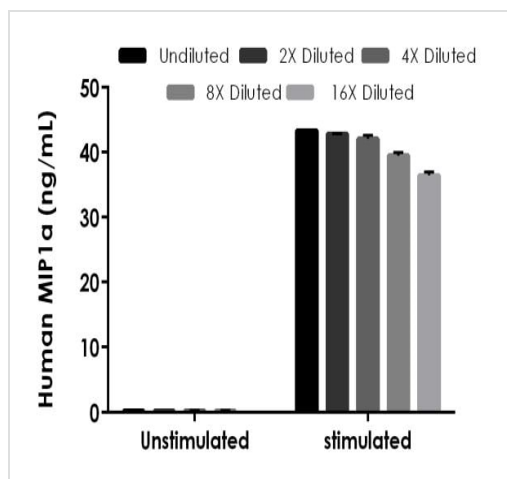
Interpolated concentrations of spiked MIP1a in human serum and plasma samples.

The concentrations of MIP1a were measured in duplicates, interpolated from the MIP1a standard curves and corrected for sample dilution. Undiluted samples are as follows: serum 50%, plasma (EDTA) 50%, plasma (heparin) 50% and plasma (citrate) 25%. The interpolated dilution factor corrected values are plotted (mean \pm SD, $n=2$).



Serum from ten individual healthy human female donors was measured in duplicate.

Interpolated dilution factor corrected values are plotted (mean \pm SD, $n=2$). The mean MIP1a concentration was determined to be 5.5 pg/mL with a range of 1.3 – 12.1 pg/mL.



Interpolated concentrations of native MIP1α in human peripheral blood monocyte (PBMC) cell culture supernatant samples.

The concentrations of MIP1α were measured in duplicates, interpolated from the MIP1α standard curves and corrected for sample dilution. Undiluted samples are as follows: unstimulated 6.35% and stimulated 0.2%. The interpolated dilution factor corrected values are plotted (mean \pm SD, n=2). The mean MIP1α concentration was determined to be 0.241 ng/mL in unstimulated PBMC cell culture supernatant and 40.8 ng/mL in stimulated.

Powered by
recombinant antibodies

Research with confidence
Consistent and reproducible results

Long-term and scalable supply
Recombinant technology

Success from the first experiment
Confirmed specificity

Ethical standards compliant
Animal-free production

Sandwich ELISA - Human MIP1α ELISA Kit
(ab214569)

To learn more about the advantages of recombinant antibodies see [here](#).

Please note: All products are "FOR RESEARCH USE ONLY. NOT FOR USE IN DIAGNOSTIC PROCEDURES"

Our Abpromise to you: Quality guaranteed and expert technical support

- Replacement or refund for products not performing as stated on the datasheet
- Valid for 12 months from date of delivery
- Response to your inquiry within 24 hours
- We provide support in Chinese, English, French, German, Japanese and Spanish
- Extensive multi-media technical resources to help you
- We investigate all quality concerns to ensure our products perform to the highest standards

If the product does not perform as described on this datasheet, we will offer a refund or replacement. For full details of the Abpromise, please visit <https://www.abcam.co.jp/abpromise> or contact our technical team.

Terms and conditions

- Guarantee only valid for products bought direct from Abcam or one of our authorized distributors