

Human LYVE1 ELISA Kit ab238263

リコンビナント SimpleStep ELISA

1 References 画像数 5

製品の概要

製品名	Human LYVE1 ELISA Kit				
検出方法	Colorimetric				
再現性	Intra-Assay (同時再現性)				
	サンプル	N	平均値	SD	CV%
	Serum	8			3.4%
	Inter-Assay (日差再現性)				
	サンプル	N	平均値	SD	CV%
	Serum	3			8%
サンプルの種類	Urine, Serum, Hep Plasma, EDTA Plasma, Cit plasma				
アッセイタイプ	Sandwich (quantitative)				
検出感度	4 pg/ml				
検出範囲	23.44 pg/ml - 1500 pg/ml				
添加回収試験	特定サンプルでの回収試験				
	サンプルの種類	平均 %		測定範囲	
	Urine	105		101% - 108%	
	Serum	108		103% - 115%	
	Hep Plasma	110		106% - 115%	
	EDTA Plasma	110		105% - 117%	
	Cit plasma	113		107% - 117%	
全工程の試験時間	1h 30m				
ステップ	One step assay				

種交差性

交差種: Human

製品の概要

Human LYVE1 ELISA Kit (ab238263) is a single-wash 90 min sandwich ELISA designed for the quantitative measurement of LYVE1 protein in cit plasma, edta plasma, hep plasma, serum, and urine. It uses our proprietary SimpleStep ELISA® technology. Quantitate Human LYVE1 with 4 pg/ml sensitivity.

SimpleStep ELISA® technology employs capture antibodies conjugated to an affinity tag that is recognized by the monoclonal antibody used to coat our SimpleStep ELISA® plates. This approach to sandwich ELISA allows the formation of the antibody-analyte sandwich complex in a single step, significantly reducing assay time. See the SimpleStep ELISA® protocol summary in the image section for further details. Our SimpleStep ELISA® technology provides several benefits:

- Single-wash protocol reduces assay time to 90 minutes or less
- High sensitivity, specificity and reproducibility from superior antibodies
- Fully validated in biological samples
- 96-wells plate breakable into 12 x 8 wells strips

A 384-well SimpleStep ELISA® microplate ([ab203359](#)) is available to use as an alternative to the 96-well microplate provided with SimpleStep ELISA® kits.

試験プラットフォーム

Pre-coated microplate (12 x 8 well strips)

製品の特性

保存方法

Store at +4°C. Please refer to protocols.

内容	1 x 96 tests
10X Human LYVE1 Capture Antibody	1 x 600µl
10X Human LYVE1 Detector Antibody	1 x 600µl
10X Wash Buffer PT (ab206977)	1 x 20ml
Antibody Diluent 4BR	1 x 6ml
Human LYVE1 Lyophilized Recombinant Protein	2 vials
Plate Seals	1 unit
Sample Diluent NS (ab193972)	1 x 12ml
SimpleStep Pre-Coated 96-Well Microplate (ab206978)	1 unit
Stop Solution	1 x 12ml
TMB Development Solution	1 x 12ml

機能

Ligand-specific transporter trafficking between intracellular organelles (TGN) and the plasma membrane. Plays a role in autocrine regulation of cell growth mediated by growth regulators

組織特異性
配列類似性
翻訳後修飾
細胞内局在

containing cell surface retention sequence binding (CRS). May act as a hyaluronan (HA) transporter, either mediating its uptake for catabolism within lymphatic endothelial cells themselves, or its transport into the lumen of afferent lymphatic vessels for subsequent re-uptake and degradation in lymph nodes.

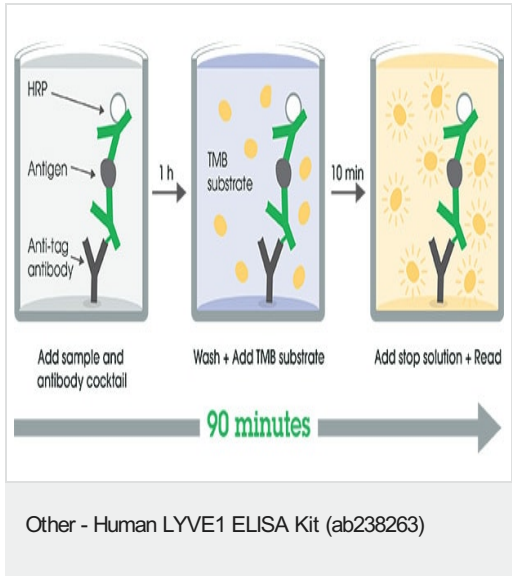
Mainly expressed in endothelial cells lining lymphatic vessels.

Contains 1 Link domain.

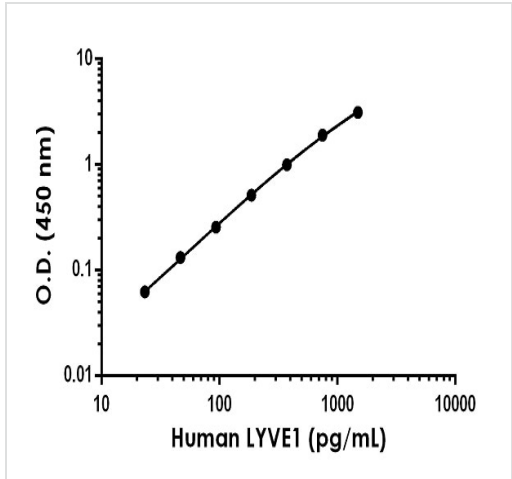
O-glycosylated.

Membrane. Localized to the plasma membrane and in vesicles near extranuclear membranes which may represent trans-Golgi network (TGN) and endosomes/prelysosomal compartments. Undergoes ligand-dependent internalization and recycling at the cell surface.

画像

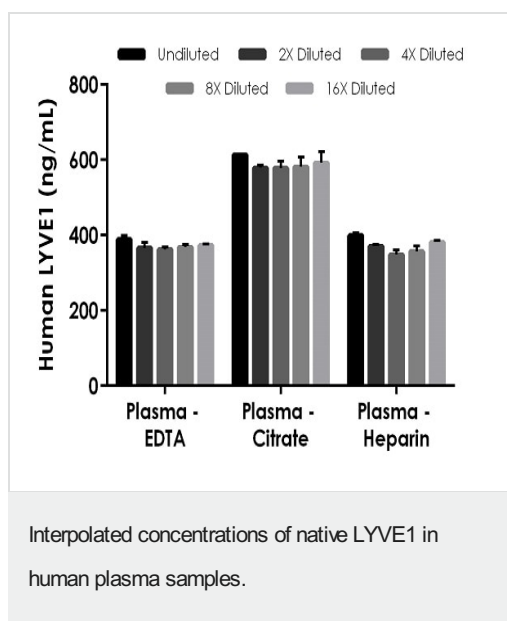


SimpleStep ELISA technology allows the formation of the antibody-antigen complex in one single step, reducing assay time to 90 minutes. Add samples or standards and antibody mix to wells all at once, incubate, wash, and add your final substrate. See protocol for a detailed step-by-step guide.

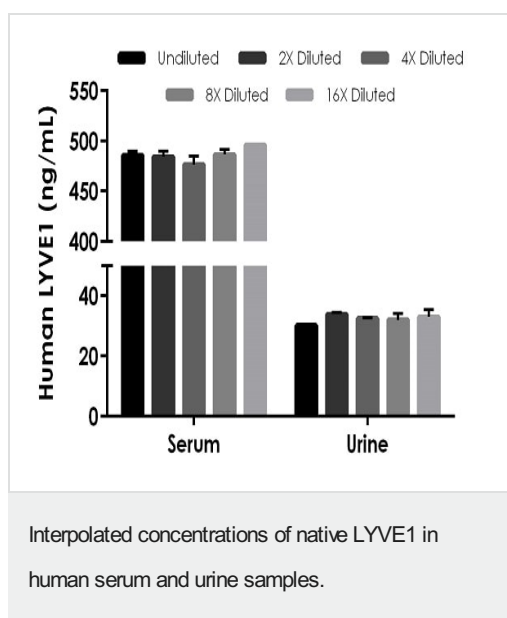


Example of human LYVE1 standard curve in Sample Diluent NS.

The LYVE1 standard curve was prepared as described in Section 10. Raw data values are shown in the table. Background-subtracted data values (mean +/- SD) are graphed.



The concentrations of LYVE1 were measured in duplicates, interpolated from the LYVE1 standard curves and corrected for sample dilution. Undiluted samples are as follows: plasma (EDTA) 1:500, plasma (citrate) 1:500, and plasma (heparin) 1:500. The interpolated dilution factor corrected values are plotted (mean \pm SD, $n=2$). The mean LYVE1 concentration was determined to be 375 ng/mL in plasma (EDTA), 591 ng/mL in plasma (citrate) and 372 ng/mL in plasma (Heparin).



The concentrations of LYVE1 were measured in duplicates, interpolated from the LYVE1 standard curves and corrected for sample dilution. Undiluted samples are as follows: serum 1:500, urine 1:20. The interpolated dilution factor corrected values are plotted (mean \pm SD, $n=2$). The mean LYVE1 concentration was determined to be 486 ng/mL in serum and 33 ng/mL in urine.

Powered by
recombinant antibodies



Research with confidence
Consistent and reproducible results



Long-term and scalable supply
Recombinant technology



Success from the first experiment
Confirmed specificity



Ethical standards compliant
Animal-free production

Sandwich ELISA - Human LYVE1 ELISA Kit
(ab238263)

To learn more about the advantages of recombinant antibodies see [here](#).

Please note: All products are "FOR RESEARCH USE ONLY. NOT FOR USE IN DIAGNOSTIC PROCEDURES"

Our Abpromise to you: Quality guaranteed and expert technical support

- Replacement or refund for products not performing as stated on the datasheet
- Valid for 12 months from date of delivery
- Response to your inquiry within 24 hours
- We provide support in Chinese, English, French, German, Japanese and Spanish
- Extensive multi-media technical resources to help you
- We investigate all quality concerns to ensure our products perform to the highest standards

If the product does not perform as described on this datasheet, we will offer a refund or replacement. For full details of the Abpromise, please visit <https://www.abcam.co.jp/abpromise> or contact our technical team.

Terms and conditions

- Guarantee only valid for products bought direct from Abcam or one of our authorized distributors