

Human Lysozyme ELISA Kit ab267798

リコンビナント SimpleStep ELISA

画像数 8

製品の概要

製品名 Human Lysozyme ELISA Kit

検出方法 Colorimetric

再現性 Intra-Assay (同時再現性)

サンプル	N	平均値	SD	CV%
Serum	8			1.7%

Inter-Assay (日差再現性)

サンプル	N	平均値	SD	CV%
Serum	3			2.2%

サンプルの種類 Cell culture supernatant, Saliva, Milk, Urine, Serum, Hep Plasma, EDTA Plasma

アッセイタイプ Sandwich (quantitative)

検出感度 7.31 pg/ml

検出範囲 31.25 pg/ml - 2000 pg/ml

添加回収試験 特定サンプルでの回収試験

サンプルの種類	平均 %	測定範囲
Urine	111	107% - 116%
Serum	103	99% - 107%
Hep Plasma	110	107% - 115%
EDTA Plasma	105	107% - 112%
Cit plasma	115	113% - 117%

全工程の試験時間 1h 30m

ステップ One step assay

種交差性

交差種: Human

製品の概要

Human Lysozyme ELISA Kit (ab267798) is a single-wash 90 min sandwich ELISA designed for the quantitative measurement of Lysozyme protein in edta plasma, hep plasma, milk, saliva, serum, urine, and cell culture supernatant. It uses our proprietary SimpleStep ELISA® technology. Quantitate Human Lysozyme with 7.31 pg/ml sensitivity.

SimpleStep ELISA® technology employs capture antibodies conjugated to an affinity tag that is recognized by the monoclonal antibody used to coat our SimpleStep ELISA® plates. This approach to sandwich ELISA allows the formation of the antibody-analyte sandwich complex in a single step, significantly reducing assay time. See the SimpleStep ELISA® protocol summary in the image section for further details. Our SimpleStep ELISA® technology provides several benefits:

- Single-wash protocol reduces assay time to 90 minutes or less
- High sensitivity, specificity and reproducibility from superior antibodies
- Fully validated in biological samples
- 96-wells plate breakable into 12 x 8 wells strips

A 384-well SimpleStep ELISA® microplate ([ab203359](#)) is available to use as an alternative to the 96-well microplate provided with SimpleStep ELISA® kits.

特記事項

Lysozyme is an integral part of the innate immune system where it serves to hydrolyze the 1,4-beta linkages of N-acetylmuramic acid and N-acetyl-D-glucosamine. This hydrolysis helps weaken the cell membrane of gram-positive bacteria. It is found in high abundance in secretory fluids, i.e. tears, saliva, milk.

試験プラットフォーム

Pre-coated microplate (12 x 8 well strips)

製品の特性

保存方法

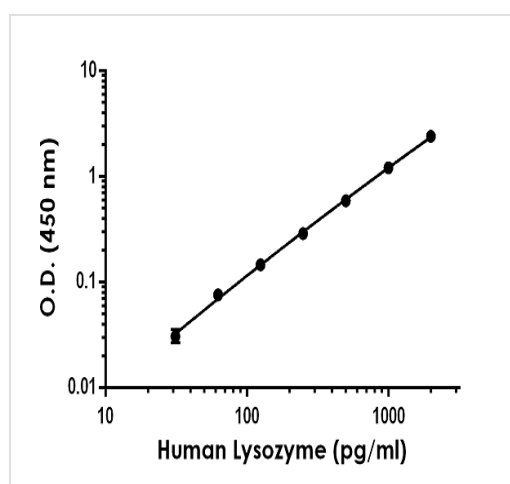
Store at +4°C. Please refer to protocols.

内容	1 x 96 tests
10X Human Lysozyme Capture Antibody	1 x 600µl
10X Human Lysozyme Detector Antibody	1 x 600µl
10X Wash Buffer PT (ab206977)	1 x 20ml
Antibody Diluent 4BI	1 x 6ml
Human Lysozyme Lyophilized Recombinant Protein	2 vials
Plate Seals	1 unit
Sample Diluent NS (ab193972)	1 x 12ml
SimpleStep Pre-Coated 96-Well Microplate (ab206978)	1 unit

内容	1 x 96 tests
Stop Solution	1 x 12ml
TMB Development Solution	1 x 12ml

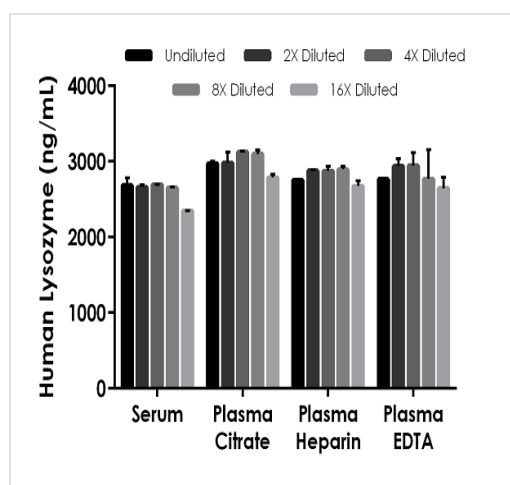
機能	Lysozymes have primarily a bacteriolytic function; those in tissues and body fluids are associated with the monocyte-macrophage system and enhance the activity of immunoagents.
関連疾患	Amyloidosis 8
配列類似性	Belongs to the glycosyl hydrolase 22 family.
細胞内局在	Secreted.

画像



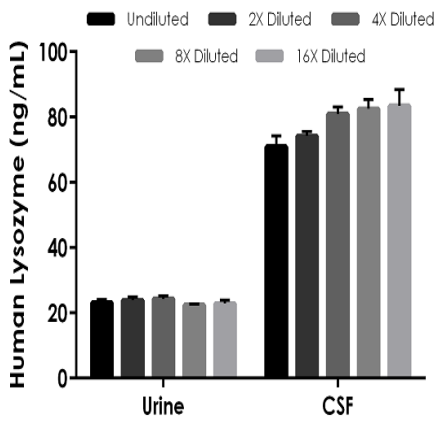
Example of human Lysozyme standard curve in Sample Diluent.

The Lysozyme standard curve was prepared as described in Section 10. Raw data values are shown in the table. Background-subtracted data values (mean +/- SD) are graphed.



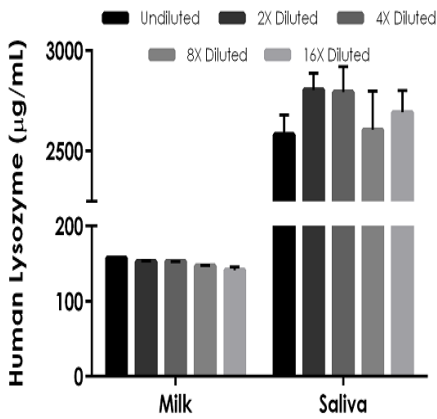
Interpolated concentrations of native Lysozyme in human serum, and plasma samples.

The concentrations of Lysozyme were measured in duplicates, interpolated from the Lysozyme standard curves and corrected for sample dilution. Undiluted samples are as follows: 1:2,000 serum, 1:2,000 plasma (citrate), 1:2,000 plasma (heparin) and 1:2,000 plasma (edta). The interpolated dilution factor corrected values are plotted (mean +/- SD, n=2). The mean Lysozyme concentration was determined to be 2608.00 ng/mL in serum, 2993.07 ng/mL in plasma (citrate) and 2814.88 ng/mL in plasma (heparin) and 2811.86 ng/mL in plasma (edta).



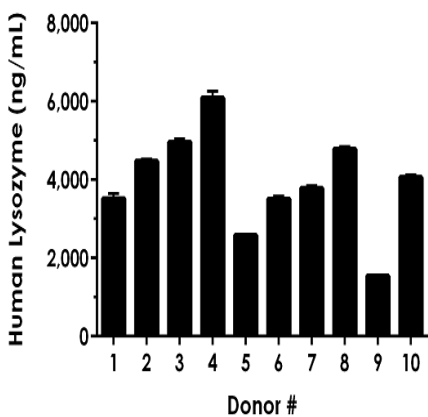
Interpolated concentrations of native Lysozyme in human urine, and CSF samples.

The concentrations of Lysozyme were measured in duplicates, interpolated from the Lysozyme standard curves and corrected for sample dilution. Undiluted samples are as follows: 1:20 urine, 1;100 CSF. The interpolated dilution factor corrected values are plotted (mean +/- SD, n=2). The mean Lysozyme concentration was determined to be 23.33 ng/mL in urine, 78.43 ng/mL in CSF.



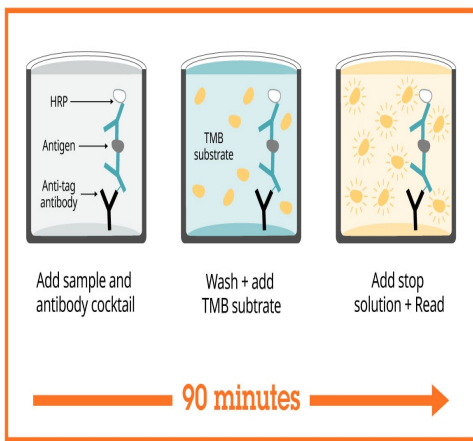
Interpolated concentrations of native Lysozyme in human milk, and saliva samples.

The concentrations of Lysozyme were measured in duplicates, interpolated from the Lysozyme standard curves and corrected for sample dilution. Undiluted samples are as follows: 1:100,000 milk, and 1:2,000,000 saliva. The interpolated dilution factor corrected values are plotted (mean +/- SD, n=2). The mean Lysozyme concentration was determined to be 150.03 µg/mL in milk, 2,696.20 µg/mL in saliva.



Serum from ten individual healthy human female donors were measured in duplicate.




Interpolated dilution factor corrected values are plotted (mean +/- SD, n=2). The mean Lysozyme concentration was determined to be 3,932.39 ng/mL with a range of 1,520.16–6,208.68 ng/mL.



Sandwich ELISA - Human Lysozyme ELISA Kit
(ab267798)

SimpleStep ELISA technology allows the formation of the antibody-antigen complex in one single step, reducing assay time to 90 minutes. Add samples or standards and antibody mix to wells all at once, incubate, wash, and add your final substrate. See protocol for a detailed step-by-step guide.

**Powered by
recombinant antibodies**

 <p>Research with confidence Consistent and reproducible results</p>	 <p>Long-term and scalable supply Recombinant technology</p>
 <p>Success from the first experiment Confirmed specificity</p>	 <p>Ethical standards compliant Animal-free production</p>

Sandwich ELISA -
Human Lysozyme ELISA Kit
(ab267798)

To learn more about the advantages of recombinant antibodies see [here](#).

Get more done with SimpleStep ELISA



Easy to use
Single-wash 90-minute protocol



Flexible
Matched antibody pairs available



Precision antibodies
High sensitivity, specificity and reproducibility



Scalable
Now in 10-pack and 384-well formats

Sandwich ELISA - Human Lysozyme ELISA Kit
(ab267798)

To learn more about the advantages of SimpleStep ELISA[®] kits see [here](#).

Please note: All products are "FOR RESEARCH USE ONLY. NOT FOR USE IN DIAGNOSTIC PROCEDURES"

Our Abpromise to you: Quality guaranteed and expert technical support

- Replacement or refund for products not performing as stated on the datasheet
- Valid for 12 months from date of delivery
- Response to your inquiry within 24 hours
- We provide support in Chinese, English, French, German, Japanese and Spanish
- Extensive multi-media technical resources to help you
- We investigate all quality concerns to ensure our products perform to the highest standards

If the product does not perform as described on this datasheet, we will offer a refund or replacement. For full details of the Abpromise, please visit <https://www.abcam.co.jp/abpromise> or contact our technical team.

Terms and conditions

- Guarantee only valid for products bought direct from Abcam or one of our authorized distributors