

Human KGF ELISA Kit ab183362

SimpleStep ELISA

★★★★★ 1 Abreviews 1 References 画像数 3

製品の概要

製品名	Human KGF ELISA Kit			
検出方法	Colorimetric			
再現性	Intra-Assay (同時再現性)			
	サンプル	N	平均値	SD
	Cell media	8		CV%
				3.2%
	Inter-Assay (日差再現性)			
	サンプル	N	平均値	SD
	Cell media	3		CV%
				2.5%
サンプルの種類	Serum, Cell culture media, Hep Plasma, EDTA Plasma, Cit plasma			
アッセイタイプ	Sandwich (quantitative)			
検出感度	7.2 pg/ml			
検出範囲	31.25 pg/ml - 2000 pg/ml			
添加回収試験	103.54 %			

特定サンプルでの回収試験

サンプルの種類	平均 %	測定範囲
Serum	103.5	93.5% - 109.8%
Cell culture media	114.5	105% - 117.3%
Hep Plasma	108.4	105.2% - 115.2%
EDTA Plasma	104.6	86.1% - 109.6%
Cit plasma	110.6	94.5% - 114.5%

全工程の試験時間 1h 30m

ステップ	One step assay
種交差性	交差種: Human
製品の概要	<p>Human KGF (FGF7) ELISA kit (ab183362) is a single-wash 90 min sandwich ELISA designed for the quantitative measurement of KGF protein in serum, plasma and cell culture supernatants. It uses our proprietary SimpleStep ELISA® technology. Quantitate human KGF with 7.2 pg/mL sensitivity.</p> <p>SimpleStep ELISA® technology employs capture antibodies conjugated to an affinity tag that is recognized by the monoclonal antibody used to coat our SimpleStep ELISA® plates. This approach to sandwich ELISA allows the formation of the antibody-analyte sandwich complex in a single step, significantly reducing assay time. See the SimpleStep ELISA® protocol summary in the image section for further details. Our SimpleStep ELISA® technology provides several benefits:</p> <ul style="list-style-type: none"> -Single-wash protocol reduces assay time to 90 minutes or less -High sensitivity, specificity and reproducibility from superior antibodies -Fully validated in biological samples -96-wells plate breakable into 12 x 8 wells strips <p>A 384-well SimpleStep ELISA® microplate (ab203359) is available to use as an alternative to the 96-well microplate provided with SimpleStep ELISA® kits.</p>
特記事項	<p>Human Keratinocyte Growth Factor (KGF) is a 28 kDa glycoprotein and the seventh discovered member of the FGF family (FGF-7). It is primarily secreted by cells of mesenchymal origin and it acts in a paracrine fashion on cells expressing the tyrosine kinase receptor FGFR2b. Binding to the receptor occurs in the presence of heparin sulphate glycosaminoglycans leading to the formation of KGF-FGFR2b-HS dimmers which allow trans-phosphorylation of specific cytoplasmic kinases.</p> <p>Signaling through FGFR2b has a dual effect, whereby it phosphorylates proteins that promote growth stimulation (FRS2-alpha, IRS4, IGF-1, ERK2, SHP2), as well as proteins that attenuate cell growth and promote cell differentiation (Lamina-associated polypeptide 2, SAP102 and Dlg family of tumor suppressor proteins). Furthermore, KGF also induces anti-apoptotic pathways through AKT and p21-activated protein kinase 4 (PAK4) and up-regulates multiple genes involved in proliferation, migration, angiogenesis, differentiation, survival, nucleotide biosynthesis, tissue remodeling, cell cycle progression, DNA repair and detoxification of reactive oxygen species. All these molecular processes lead to tissue protection and regeneration.</p>
試験プラットフォーム	Microplate

製品の特性

保存方法 Store at +4°C. Please refer to protocols.

内容	1 x 96 tests
10X Human KGF Capture Antibody	1 x 600µl
10X Human KGF Detector Antibody	1 x 600µl
10X Wash Buffer PT (ab206977)	1 x 20ml

内容	1 x 96 tests
Antibody Diluent CPI - HAMA Blocker (ab193969)	1 x 6ml
Human KGF Lyophilized Recombinant Protein	2 vials
Plate Seals	1 unit
Sample Diluent 25BS	1 x 20ml
Sample Diluent NS (ab193972)	1 x 12ml
SimpleStep Pre-Coated 96-Well Microplate (ab206978)	1 unit
Stop Solution	1 x 12ml
TMB Development Solution	1 x 12ml

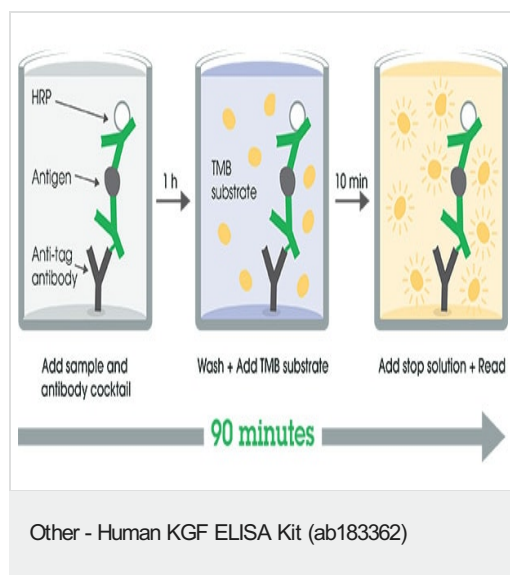
関連性

Fibroblast growth factors (FGFs) can stimulate the proliferation of mesenchymal, epithelial and neuroectodermal cells. Members of the family include Acidic FGF (also known as aFGF or FGF 1), basic FGF (bFGF or FGF 2), FGF3 (also known as Int2) and FGF4 (also known as hst or Kaposi FGF). FGF4 was first revealed to be an oncoprotein in Kaposi's sarcoma cells. Other family members include FGF5, FGF6, FGF7 (keratinocyte growth factor, KGF), FGF8 (AIGF), FGF9 (GAF) and FGF10.

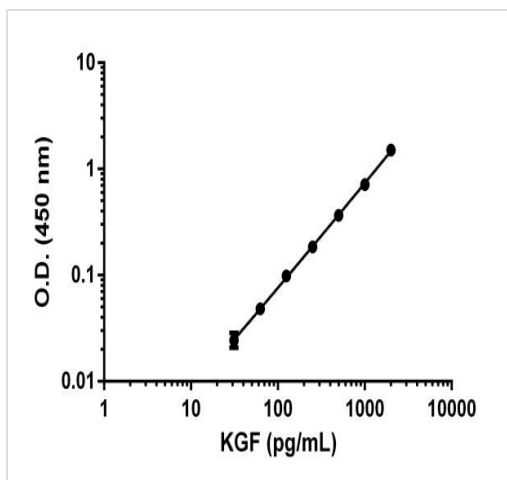
細胞内局在

Secreted

画像

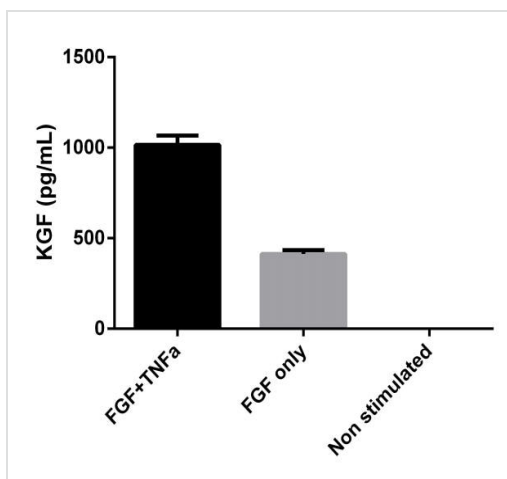


SimpleStep ELISA technology allows the formation of the antibody-antigen complex in one single step, reducing assay time to 90 minutes. Add samples or standards and antibody mix to wells all at once, incubate, wash, and add your final substrate. See protocol for a detailed step-by-step guide.



Example of KGF standard curve in sample diluent 25BS.

Figure 1. Example of KGF standard curve in sample diluent 25BS. The KGF standard curve was prepared as described in Section 10. Background-subtracted data values (mean \pm SD) are graphed.



Specificity of KGF signal on stimulated and non stimulated media supernatants.

Figure 2. Specificity of KGF signal on stimulated and non stimulated media supernatants. Human Dermal Neonatal Fibroblasts cells were cultured in HGDMEM supplemented with 10% fetal calf serum, 2 mM L-glutamine, 100 U/mL penicillin and 100 μ g/mL streptomycin. Cells were cultured for 2 days at 37°C in the presence or absence of 1 μ g/mL of FGF-basic with or without 10 ng/mL of TNF- α . The concentrations of KGF were measured after loading neat media on the plate and were then interpolated from a KGF calibration curve on sample diluent 25BS. The mean concentration of KGF (FGF-7) was determined to be undetectable in non stimulated media, 413 pg/mL in FGF-basic stimulated media and 1,016 pg/mL in FGF-basic+TNF- α stimulated media.

Please note: All products are "FOR RESEARCH USE ONLY. NOT FOR USE IN DIAGNOSTIC PROCEDURES"

Our Promise to you: Quality guaranteed and expert technical support

- Replacement or refund for products not performing as stated on the datasheet
- Valid for 12 months from date of delivery
- Response to your inquiry within 24 hours
- We provide support in Chinese, English, French, German, Japanese and Spanish

- Extensive multi-media technical resources to help you
- We investigate all quality concerns to ensure our products perform to the highest standards

If the product does not perform as described on this datasheet, we will offer a refund or replacement. For full details of the Abpromise, please visit <https://www.abcam.co.jp/abpromise> or contact our technical team.

Terms and conditions

- Guarantee only valid for products bought direct from Abcam or one of our authorized distributors