

Human Insulin ELISA Kit ab100578

★★★★★ 3 Abreviews 39 References 画像数 5

製品の概要

製品名	Human Insulin ELISA Kit
検出方法	Colorimetric
サンプルの種類	Cell culture supernatant, Serum, Plasma
アッセイタイプ	Sandwich (quantitative)
検出感度	< 4 µIU/ml
検出範囲	4.69 µIU/ml - 300 µIU/ml
添加回収試験	89 %

特定サンプルでの回収試験

サンプルの種類	平均 %	測定範囲
Cell culture supernatant	76.16	68% - 88%
Serum	91.4	83% - 102%
Plasma	99.03	73% - 128%

ステップ Multiple steps standard assay

種交差性 交差種: Human

交差が予測される動物種: Mouse, Rat, Cow, Pig ⓘ

製品の概要 Abcam's Human Insulin ELISA (Enzyme-Linked Immunosorbent Assay) kit is an *in vitro* enzyme-linked immunosorbent assay for the quantitative measurement of Human Insulin and Proinsulin in serum, plasma, cell culture supernatants.

This assay employs an antibody specific for Human Insulin coated on a 96-well plate. Standards and samples are pipetted into the wells and Insulin present in a sample is bound to the wells by the immobilized antibody. The wells are washed and biotinylated anti-Human Insulin antibody is added. After washing away unbound biotinylated antibody, HRP-conjugated streptavidin is pipetted to the wells. The wells are again washed, a TMB substrate solution is added to the wells and color develops in proportion to the amount of Insulin bound. The Stop Solution changes the color from blue to yellow, and the intensity of the color is measured at 450 nm.

This kit detects both insulin and proinsulin.

Get higher sensitivity in only 90 minutes with Human Insulin ELISA Kit (**ab278123**) from our SimpleStep ELISA[®] range.

特記事項

Optimization may be required with urine samples.

試験プラットフォーム

Microplate

製品の特性

保存方法

Store at -20°C. Please refer to protocols.

内容	1 x 96 tests
20X Wash Buffer	1 x 25ml
500X HRP-Streptavidin Concentrate	1 x 200µl
5X Assay Diluent B	1 x 15ml
Assay Diluent A	1 x 30ml
Biotinylated anti-Human Insulin	2 vials
Insulin Microplate (12 strips x 8 wells)	1 unit
Recombinant Human Insulin Standard (lyophilized)	2 vials
Stop Solution	1 x 8ml
TMB One-Step Substrate Reagent	1 x 12ml

機能

Insulin decreases blood glucose concentration. It increases cell permeability to monosaccharides, amino acids and fatty acids. It accelerates glycolysis, the pentose phosphate cycle, and glycogen synthesis in liver.

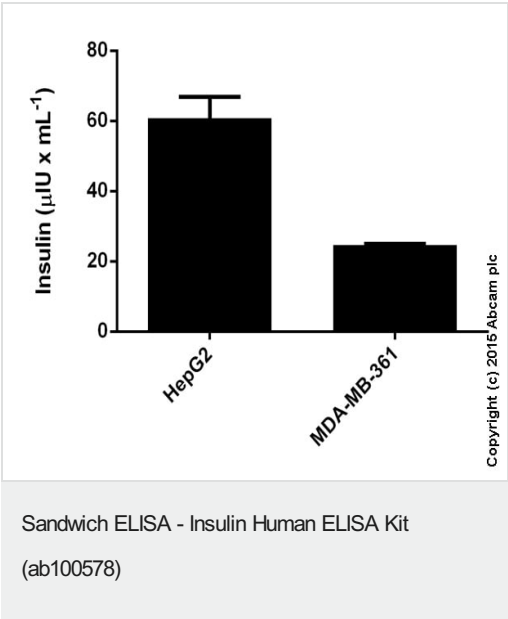
関連疾患

Defects in INS are the cause of familial hyperproinsulinemia (FHPRI) [MIM:176730].
Defects in INS are a cause of diabetes mellitus insulin-dependent type 2 (IDDM2) [MIM:125852]. IDDM2 is a multifactorial disorder of glucose homeostasis that is characterized by susceptibility to ketoacidosis in the absence of insulin therapy. Clinical features are polydipsia, polyphagia and polyuria which result from hyperglycemia-induced osmotic diuresis and secondary thirst. These derangements result in long-term complications that affect the eyes, kidneys, nerves, and blood vessels.
Defects in INS are a cause of diabetes mellitus permanent neonatal (PNDM) [MIM:606176]. PNDM is a rare form of diabetes distinct from childhood-onset autoimmune diabetes mellitus type 1. It is characterized by insulin-requiring hyperglycemia that is diagnosed within the first months of life. Permanent neonatal diabetes requires lifelong therapy.
Defects in INS are a cause of maturity-onset diabetes of the young type 10 (MODY10) [MIM:613370]. MODY10 is a form of diabetes that is characterized by an autosomal dominant mode of inheritance, onset in childhood or early adulthood (usually before 25 years of age), a primary defect in insulin secretion and frequent insulin-independence at the beginning of the disease.

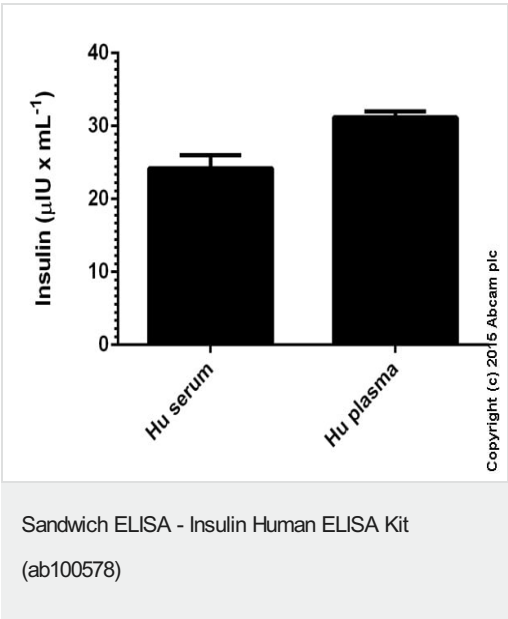
配列類似性

Belongs to the insulin family.

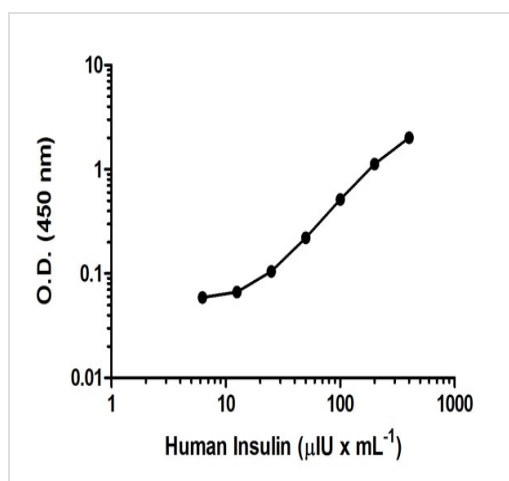
画像



Human Insulin measured in cell culture supernatants showing quantity (μIU) per mL of tested sample. Samples diluted 1-2 fold.

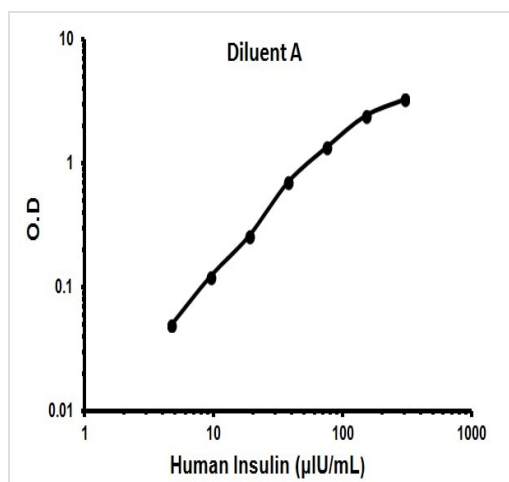


Human Insulin measured in biological fluids showing quantity (μIU) per mL of tested sample. Samples diluted 1-6 fold.



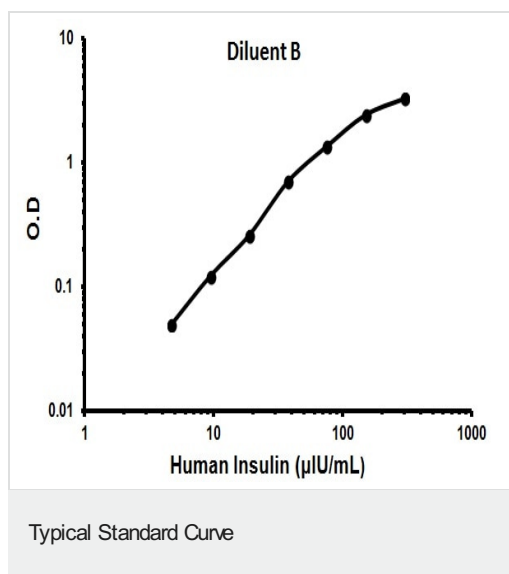
Human Insulin standard curve: mean of duplicates (+/- SD), performed in Diluent A

Sandwich ELISA - Insulin Human ELISA Kit
(ab100578)



Representative Standard Curve using ab100578.

Typical Standard Curve



Representative Standard Curve using ab100578.

Please note: All products are "FOR RESEARCH USE ONLY. NOT FOR USE IN DIAGNOSTIC PROCEDURES"

Our Abpromise to you: Quality guaranteed and expert technical support

- Replacement or refund for products not performing as stated on the datasheet
- Valid for 12 months from date of delivery
- Response to your inquiry within 24 hours
- We provide support in Chinese, English, French, German, Japanese and Spanish
- Extensive multi-media technical resources to help you
- We investigate all quality concerns to ensure our products perform to the highest standards

If the product does not perform as described on this datasheet, we will offer a refund or replacement. For full details of the Abpromise, please visit <https://www.abcam.co.jp/abpromise> or contact our technical team.

Terms and conditions

- Guarantee only valid for products bought direct from Abcam or one of our authorized distributors