

### Human IL-9 ELISA Kit ab100577

#### 画像数 2

#### 製品の概要

製品名	Human IL-9 ELISA Kit
検出方法	Colorimetric
サンプルの種類	Cell culture supernatant, Plasma
アッセイタイプ	Sandwich (quantitative)
検出感度	< 0.1 ng/ml
検出範囲	0.04 ng/ml - 30 ng/ml
添加回収試験	98 %

特定サンプルでの回収試験

サンプルの種類	平均 %	測定範囲
Cell culture supernatant	102.1	90% - 110%
Plasma	82.4	67% - 98%

ステップ Multiple steps standard assay

種交差性 交差種: Human

製品の概要 Abcam's IL-9 Human ELISA (Enzyme-Linked Immunosorbent Assay) kit is an *in vitro* enzyme-linked immunosorbent assay for the quantitative measurement of Human IL-9 in plasma and cell culture supernatants. (Human IL-9 concentration is pretty low in normal plasma, it may not be detected in this assay).

This assay employs an antibody specific for Human IL-9 coated on a 96-well plate. Standards and samples are pipetted into the wells and IL-9 present in a sample is bound to the wells by the immobilized antibody. The wells are washed and biotinylated anti-Human IL-9 antibody is added. After washing away unbound biotinylated antibody, HRP-conjugated streptavidin is pipetted to the wells. The wells are again washed, a TMB substrate solution is added to the wells and color develops in proportion to the amount of IL-9 bound. The Stop Solution changes the color from blue to yellow, and the intensity of the color is measured at 450 nm.

We have not been able to detect endogenous Human IL-9 in normal serum with ab100577, only in serum spiked with Human IL-9.

特記事項 Optimization may be required with urine samples.

The standard is affinity purified.

**試験プラットフォーム**

Microplate

**製品の特性**

**保存方法**

Store at -20°C. Please refer to protocols.

内容	1 x 96 tests
20X Wash Buffer	1 x 25ml
300X HRP-Streptavidin Concentrate	1 x 200µl
5X Assay Diluent B	1 x 15ml
Assay Diluent A	1 x 30ml
Biotinylated anti-Human IL-9	2 vials
IL-9 Microplate (12 x 8 wells)	1 unit
Recombinant Human IL-9 Standard (lyophilized)	2 vials
Stop Solution	1 x 8ml
TMB One-Step Substrate Reagent	1 x 12ml

**機能**

Supports IL-2 independent and IL-4 independent growth of helper T-cells.

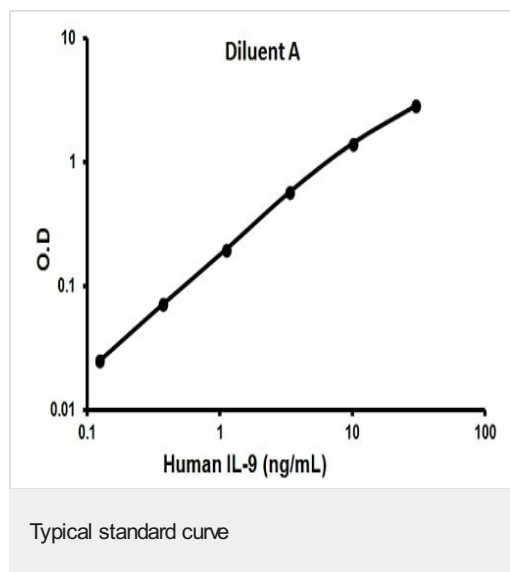
**配列類似性**

Belongs to the IL-7/IL-9 family.

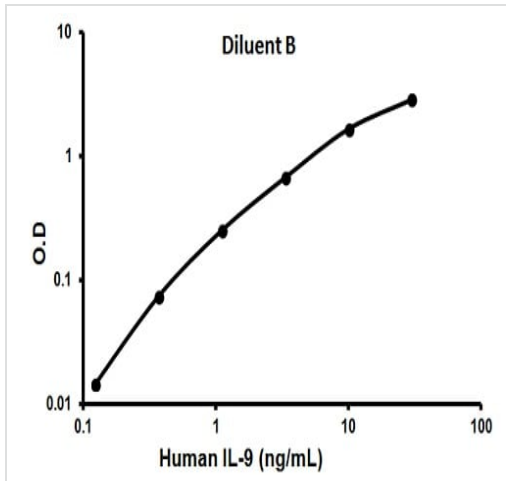
**細胞内局在**

Secreted.

**画像**



Representative standard curve using ab100577



Representative standard curve using ab100577

Typical standard curve

**Please note:** All products are "FOR RESEARCH USE ONLY. NOT FOR USE IN DIAGNOSTIC PROCEDURES"

### Our Abpromise to you: Quality guaranteed and expert technical support

- Replacement or refund for products not performing as stated on the datasheet
- Valid for 12 months from date of delivery
- Response to your inquiry within 24 hours
- We provide support in Chinese, English, French, German, Japanese and Spanish
- Extensive multi-media technical resources to help you
- We investigate all quality concerns to ensure our products perform to the highest standards

If the product does not perform as described on this datasheet, we will offer a refund or replacement. For full details of the Abpromise, please visit <https://www.abcam.co.jp/abpromise> or contact our technical team.

### Terms and conditions

- Guarantee only valid for products bought direct from Abcam or one of our authorized distributors