



Product datasheet

Human ICAM1 ELISA Kit (CD54) ab174445

SimpleStep ELISA

14 References 画像数 7

製品の概要

製品名	Human ICAM1 ELISA Kit (CD54)				
検出方法	Colorimetric				
再現性	Intra-Assay (同時再現性)				
	サンプル	N	平均値	SD	CV%
	Overall	6			6%
	Inter-Assay (日差再現性)				
	サンプル	N	平均値	SD	CV%
	Overall	24			7%
サンプルの種類	Cell culture supernatant, Serum, Cell culture extracts, Adherent cells, Hep Plasma, EDTA Plasma, Cit plasma				
アッセイタイプ	Sandwich (quantitative)				
検出感度	1.6 pg/ml				
検出範囲	39.06 pg/ml - 2500 pg/ml				
添加回収試験	特定サンプルでの回収試験				
	サンプルの種類		平均 %	測定範囲	
	Serum		103	99% - 110%	
	Plasma		113	96% - 126%	
	Cell culture media		98	91% - 102%	
	Extraction Buffer		87	82% - 97%	
全工程の試験時間	1h 30m				
ステップ	One step assay				

種交差性

交差種: Human

非交差種: Goat, Cow, Pig

製品の概要

Human ICAM-1 ELISA kit (CD54) (ab174445) is a single-wash 90 min sandwich ELISA designed for the quantitative measurement of ICAM-1 protein in human cell culture supernatant, plasma, serum and cell lysate samples. It uses our proprietary SimpleStep ELISA® technology. Quantitate human ICAM-1 with 1.6 pg/ml sensitivity.

SimpleStep ELISA® technology employs capture antibodies conjugated to an affinity tag that is recognized by the monoclonal antibody used to coat our SimpleStep ELISA® plates. This approach to sandwich ELISA allows the formation of the antibody-analyte sandwich complex in a single step, significantly reducing assay time. See the SimpleStep ELISA® protocol summary in the image section for further details. Our SimpleStep ELISA® technology provides several benefits:

- Single-wash protocol reduces assay time to 90 minutes or less
- High sensitivity, specificity and reproducibility from superior antibodies
- Fully validated in biological samples
- 96-wells plate breakable into 12 x 8 wells strips

A 384-well SimpleStep ELISA® microplate (**ab203359**) is available to use as an alternative to the 96-well microplate provided with SimpleStep ELISA® kits.

特記事項

ICAM1, is a cell surface glycoprotein typically expressed in endothelial cells and cells of the immune system. The extracellular portion of ICAM-1 forms five immunoglobulin like domains attached to a single hydrophobic transmembrane region and a short cytoplasmic tail. ICAM-1, binds to the Leukocyte Integrins LFA-1 (CD11a/CD18) and Mac-1 (CD11b/CD18) as well as to non integrin ligands such as CD43, fibrinogen, hyaluronan, Rhinoviruses and Plasmodium falciparum-infected erythrocytes. Binding to LFA-1 facilitates trans-endothelial leukocyte migration to areas of inflammation via promotion of endothelial apical cups assembly.

ICAM-1 expression increases in the vascular endothelium, macrophages and lymphocytes in response to cytokine stimulation (IL-1 and TNF). Furthermore, ligation of ICAM-1 up-regulates its own expression in a positive-feedback loop to maintain a pro-inflammatory environment conducive to leukocytes endothelial transmigration.

Soluble ICAM-1 is reported to be present in normal serum, cerebrospinal fluid, urine and bronchoalveolar lavage fluid. Elevated levels of soluble ICAM-1 have been associated with multiple organ failure, atherosclerosis, autoimmune disorders, diabetes, obesity, hypertension, liver disease as well as cancer, and several studies have correlated serum levels of sICAM-1 with the severity of these diseases.

Abcam has not and does not intend to apply for the REACH Authorisation of customers' uses of products that contain European Authorisation list (Annex XIV) substances.

It is the responsibility of our customers to check the necessity of application of REACH Authorisation, and any other relevant authorisations, for their intended uses.

試験プラットフォーム

Microplate

製品の特性

保存方法

Store at +4°C. Please refer to protocols.

内容	1 x 96 tests
10X Human ICAM-1 Capture Antibody	1 x 600μl
10X Human ICAM-1 Detector Antibody	1 x 600μl
10X Wash Buffer PT (ab206977)	1 x 20ml
50X Cell Extraction Enhancer Solution (ab193971)	1 x 1ml
5X Cell Extraction Buffer PTR (ab193970)	1 x 10ml
Antibody Diluent 4BI	1 x 6ml
Human ICAM-1 Lyophilized Recombinant Protein	2 vials
Plate Seals	1 unit
Sample Diluent NS (ab193972)	1 x 50ml
SimpleStep Pre-Coated 96-Well Microplate (ab206978)	1 unit
Stop Solution	1 x 12ml
TMB Development Solution	1 x 12ml

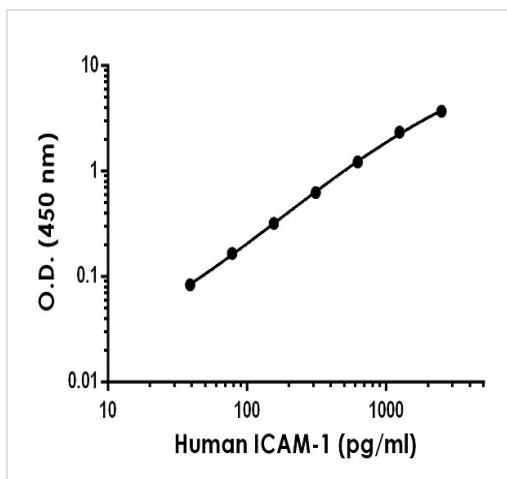
関連性

ICAM1 is a 85-110 kDa single chain type 1 integral membrane glycoprotein with an extracellular domain of five immunoglobulin superfamily repeats, a transmembrane region and a cytoplasmic domain. It shares considerable amino acid sequence homology with ICAM3 and with ICAM2. ICAM1 is expressed by activated endothelial cells. It is detected on cells of many other lineages (e.g. epithelial cells, fibroblasts, chondrocytes, B lymphocytes, T lymphocytes (low), monocytes, macrophages, dendritic cells and neutrophils), with lower levels that increase in inflammation. ICAM1 is also detected in some carcinoma and melanoma cells. Soluble ICAM1 is detectable in the plasma and is elevated in patients with various inflammatory syndromes. It is the receptor for rhinoviruses and malaria.

細胞内局在

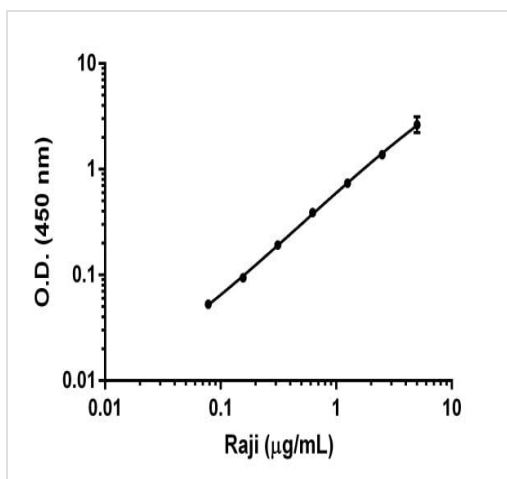
Membrane

画像



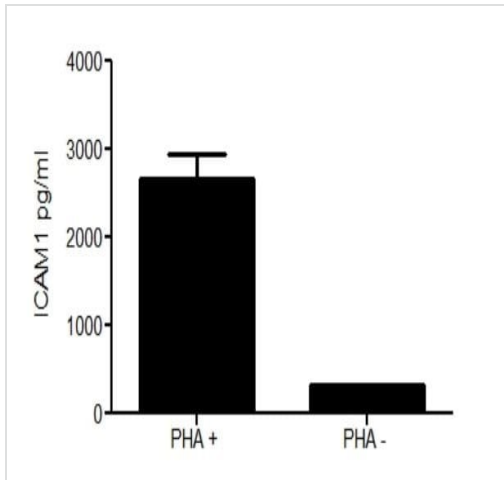
Background-subtracted data values (mean \pm SD) are graphed.

Example ICAM-1 standard curve



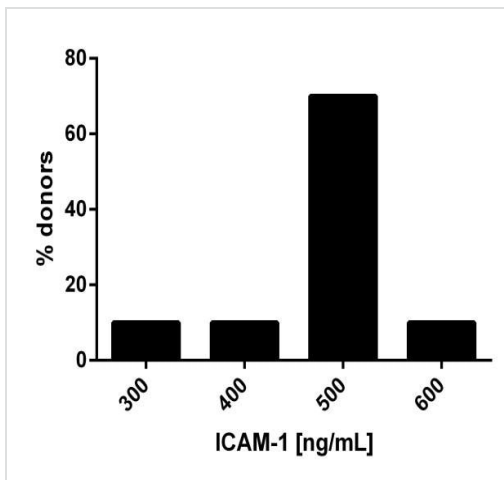
The curve was prepared by loading 5 µg/mL of Raji cell extracts, followed by a 1:2 titration series. Background-subtracted data values (mean \pm SD) are graphed.

Example of ICAM-1 dynamic range in Raji cell lysates.



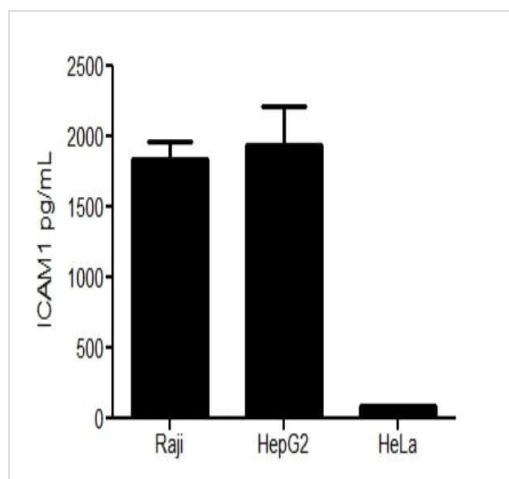
Specificity of ICAM-1 signal on stimulated and non stimulated media supernatants.

Human PBMCs were cultured in RPMI supplemented with 10% fetal calf serum, 2 mM L-glutamine, 100 U/mL penicillin, and 100 µg/mL streptomycin. Cells were cultured for 2 days at 37°C in the presence or absence of PHA. The concentrations of ICAM-1 were interpolated from the calibration curve and corrected for sample dilution. The mean ICAM-1 concentration was determined to be 320 pg/mL in unstimulated PBMC supernatants and 2,654 pg/mL in stimulated PBMC supernatants.



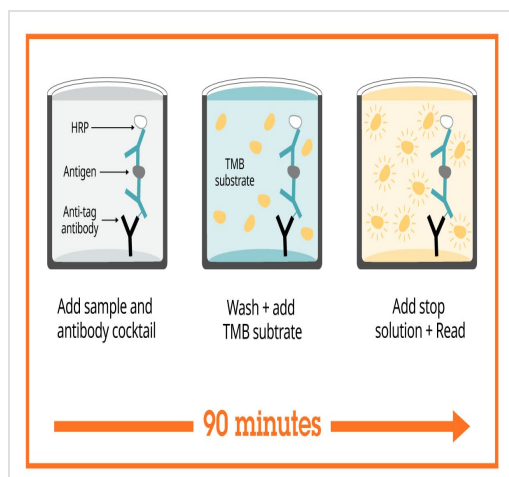
Frequency histogram of ICAM-1 levels in serum of individual normal healthy donors.

The levels of ICAM-1 in serum samples were tested from ten individual healthy donors. Levels were interpolated from the standard curve and corrected for sample dilution. The levels of ICAM-1 are shown for the percentage of individuals within each 100 ng/mL bin center of the distribution. The mean level of ICAM-1 was 469 ng/mL with a range of 347 to 629 ng/mL and a standard deviation of 77 ng/mL.



Comparison of ICAM-1 levels in three Human cell culture lysates.

The levels of ICAM-1 protein were assessed in three Human cell line lysates loaded at 2.5 µg/mL of protein. The raw OD 450 nm signal for each sample was interpolated from an ICAM1 standard curve.



Sandwich ELISA - Human ICAM1 ELISA Kit (CD54) (ab174445)

SimpleStep ELISA technology allows the formation of the antibody-antigen complex in one single step, reducing assay time to 90 minutes. Add samples or standards and antibody mix to wells all at once, incubate, wash, and add your final substrate. See protocol for a detailed step-by-step guide.

**Get more done with
SimpleStep ELISA**



Easy to use

Single-wash 90-minute protocol



Flexible

Matched antibody pairs available



Precision antibodies

High sensitivity, specificity and reproducibility



Scalable

Now in 10-pack and 384-well formats

To learn more about the advantages of SimpleStep ELISA® kits see [here](#).

Sandwich ELISA - Human ICAM1 ELISA Kit (CD54)
(ab174445)

Please note: All products are "FOR RESEARCH USE ONLY. NOT FOR USE IN DIAGNOSTIC PROCEDURES"

Our Abpromise to you: Quality guaranteed and expert technical support

- Replacement or refund for products not performing as stated on the datasheet
- Valid for 12 months from date of delivery
- Response to your inquiry within 24 hours
- We provide support in Chinese, English, French, German, Japanese and Spanish
- Extensive multi-media technical resources to help you
- We investigate all quality concerns to ensure our products perform to the highest standards

If the product does not perform as described on this datasheet, we will offer a refund or replacement. For full details of the Abpromise, please visit <https://www.abcam.co.jp/abpromise> or contact our technical team.

Terms and conditions

- Guarantee only valid for products bought direct from Abcam or one of our authorized distributors