

Human Hemopexin ELISA Kit (HPX) ab108860

2 References 画像数 2

製品の概要

製品名	Human Hemopexin ELISA Kit (HPX)			
検出方法	Colorimetric			
再現性	Intra-Assay (同時再現性)			
	サンプル	N	平均値	SD
	Overall			CV%
				5.3%
	Inter-Assay (日差再現性)			
	サンプル	N	平均値	SD
	Overall			CV%
				9.5%
サンプルの種類	Cell culture supernatant, Saliva, Milk, Urine, Cerebral Spinal Fluid			
アッセイタイプ	Sandwich (quantitative)			
検出感度	= 1.3 ng/ml			
検出範囲	12.5 ng/ml - 200 ng/ml			
添加回収試験	98 %			
全工程の試験時間	3h 30m			
ステップ	Multiple steps standard assay			
種交差性	交差種: Human			
製品の概要	Abcam's Hemopexin (HPX) Human <i>in vitro</i> ELISA (Enzyme-Linked Immunosorbent Assay) kit is designed for the quantitative measurement of Hemopexin levels in Human cell culture supernatants, milk, saliva and urine.			

A Hemopexin specific antibody has been precoated onto 96-well plates and blocked. Standards or test samples are added to the wells and subsequently a Hemopexin specific biotinylated detection antibody is added and then followed by washing with wash buffer. Streptavidin-Peroxidase Conjugate is added and unbound conjugates are washed away with wash buffer. TMB is then used to visualize Streptavidin-Peroxidase enzymatic reaction. TMB is catalyzed by Streptavidin-Peroxidase to produce a blue color product that changes into yellow after adding acidic stop solution. The density of yellow coloration is directly proportional to the amount of Hemopexin captured in plate.

The entire kit may be stored at -20°C for long term storage before reconstitution - Avoid repeated freeze-thaw cycles.

試験プラットフォーム

Microplate

製品の特性

保存方法

Store at -20°C. Please refer to protocols.

内容	1 x 96 tests
100X Streptavidin-Peroxidase Conjugate	1 x 80µl
10X Diluent N Concentrate	1 x 30ml
20X Wash Buffer Concentrate	2 x 30ml
50X Biotinylated Human Hemopexin Antibody	1 x 120µl
Chromogen Substrate	1 x 7ml
Hemopexin Microplate (12 x 8 well strips)	1 unit
Hemopexin Standard	1 vial
Sealing Tapes	3 units
Stop Solution	1 x 11ml

機能

Binds heme and transports it to the liver for breakdown and iron recovery, after which the free hemopexin returns to the circulation.

組織特異性

Expressed by the liver and secreted in plasma.

配列類似性

Belongs to the hemopexin family.

Contains 5 hemopexin-like domains.

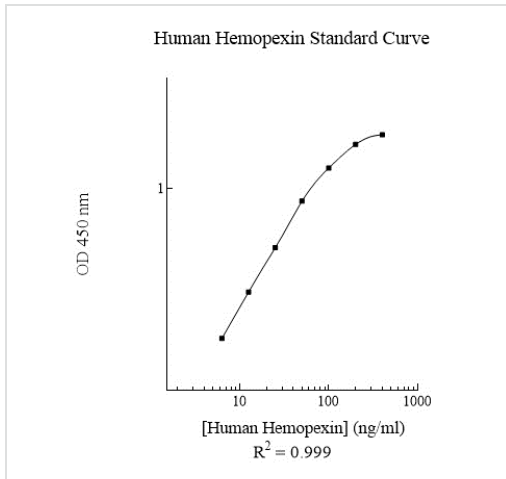
翻訳後修飾

N- and O-glycosylated. O-glycosylated with core 1 or possibly core 8 glycans.

細胞内局在

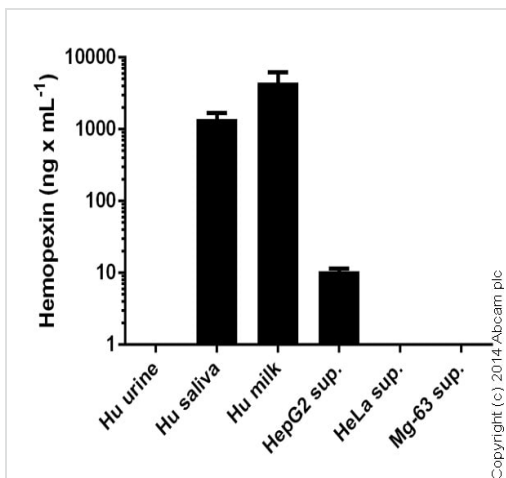
Secreted.

画像



Typical Standard Curve

Representative Standard Curve using ab108860.



Sandwich ELISA - Hemopexin (HPX) Human ELISA Kit (ab108860)

Hemopexin measured in biological fluids and cell culture supernatants showing quantity (ng) per mL of tested sample. Human saliva diluted 60-120 fold. Human milk diluted 300-600 fold. Human urine diluted 10 fold - below detection. Cell supernatants tested neat.

Please note: All products are "FOR RESEARCH USE ONLY. NOT FOR USE IN DIAGNOSTIC PROCEDURES"

Our Abpromise to you: Quality guaranteed and expert technical support

- Replacement or refund for products not performing as stated on the datasheet
- Valid for 12 months from date of delivery
- Response to your inquiry within 24 hours

- We provide support in Chinese, English, French, German, Japanese and Spanish
- Extensive multi-media technical resources to help you
- We investigate all quality concerns to ensure our products perform to the highest standards

If the product does not perform as described on this datasheet, we will offer a refund or replacement. For full details of the Abpromise, please visit <https://www.abcam.co.jp/abpromise> or contact our technical team.

Terms and conditions

- Guarantee only valid for products bought direct from Abcam or one of our authorized distributors