

Human Fibrinogen ELISA Kit ab108842

9 References [画像数 2](#)

製品の概要

製品名	Human Fibrinogen ELISA Kit										
検出方法	Colorimetric										
再現性	Intra-Assay (同時再現性)										
	<table border="1"> <thead> <tr> <th>サンプル</th> <th>N</th> <th>平均値</th> <th>SD</th> <th>CV%</th> </tr> </thead> <tbody> <tr> <td>Overall</td> <td></td> <td></td> <td></td> <td>5.6%</td> </tr> </tbody> </table>	サンプル	N	平均値	SD	CV%	Overall				5.6%
サンプル	N	平均値	SD	CV%							
Overall				5.6%							
	Inter-Assay (日差再現性)										
	<table border="1"> <thead> <tr> <th>サンプル</th> <th>N</th> <th>平均値</th> <th>SD</th> <th>CV%</th> </tr> </thead> <tbody> <tr> <td>Overall</td> <td></td> <td></td> <td></td> <td>9.5%</td> </tr> </tbody> </table>	サンプル	N	平均値	SD	CV%	Overall				9.5%
サンプル	N	平均値	SD	CV%							
Overall				9.5%							
サンプルの種類	Plasma										
アッセイタイプ	Competitive										
検出感度	= 0.33 µg/ml										
検出範囲	0.5 µg/ml - 15 µg/ml										
添加回収試験	98 %										
全工程の試験時間	3h 00m										
ステップ	Multiple steps standard assay										
種交差性	交差種: Human										
製品の概要	Human Fibrinogen <i>in vitro</i> competitive ELISA (Enzyme-Linked Immunosorbent Assay) kit is designed for the quantitative measurement of Fibrinogen levels in plasma.										

A Fibrinogen specific antibody has been precoated onto 96-well plates and blocked. Standards or test samples are added to the wells and subsequently biotinylated Fibrinogen is added and then followed by washing with wash buffer. Streptavidin-Peroxidase Complex is added and unbound conjugates are washed away with wash buffer. TMB is then used to visualize Streptavidin-Peroxidase enzymatic reaction. TMB is catalyzed by Streptavidin-Peroxidase to produce a blue color product that changes into yellow after adding acidic stop solution. The density of yellow coloration is inversely proportional to the amount of Fibrinogen captured in plate.

Get better reproducibility in only 90 minutes with Human Fibrinogen ELISA Kit ([ab208036](#)) from our SimpleStep ELISA® range.

The entire kit may be stored at -20°C for long term storage before reconstitution - Avoid repeated freeze-thaw cycles.

試験プラットフォーム

Microplate

製品の特性

保存方法

Store at -20°C. Please refer to protocols.

内容	1 x 96 tests
100X Streptavidin-Peroxidase Conjugate	1 x 80µl
10X Diluent N Concentrate	1 x 30ml
20X Wash Buffer Concentrate	1 x 30ml
3X Biotinylated Human Fibrinogen (Lyophilized)	1 vial
Chromogen Substrate	1 x 7ml
Fibrinogen Microplate (12 x 8 well strips)	1 unit
Fibrinogen Standard	1 vial
Sealing Tapes	3 units
Stop Solution	1 x 11ml

機能

Fibrinogen has a double function: yielding monomers that polymerize into fibrin and acting as a cofactor in platelet aggregation.

組織特異性

Plasma.

関連疾患

Defects in FGA are a cause of congenital afibrinogenemia (CAFBN) [MIM:202400]. This is a rare autosomal recessive disorder characterized by bleeding that varies from mild to severe and by complete absence or extremely low levels of plasma and platelet fibrinogen. Note=The majority of cases of afibrinogenemia are due to truncating mutations. Variations in position Arg-35 (the site of cleavage of fibrinopeptide a by thrombin) leads to alpha-dysfibrinogenemias.

Defects in FGA are a cause of amyloidosis type 8 (AMYL8) [MIM:105200]; also known as systemic non-neuropathic amyloidosis or Ostertag-type amyloidosis. AMYL8 is a hereditary generalized amyloidosis due to deposition of apolipoprotein A1, fibrinogen and lysozyme amyloids. Viscera are particularly affected. There is no involvement of the nervous system. Clinical features include renal amyloidosis resulting in nephrotic syndrome, arterial hypertension, hepatosplenomegaly, cholestasis, petechial skin rash.

配列類似性

Contains 1 fibrinogen C-terminal domain.

ドメイン

A long coiled coil structure formed by 3 polypeptide chains connects the central nodule to the C-terminal domains (distal nodules). The long C-terminal ends of the alpha chains fold back, contributing a fourth strand to the coiled coil structure.

翻訳後修飾

The alpha chain is not glycosylated.

Forms F13A-mediated cross-links between a glutamine and the epsilon-amino group of a lysine residue, forming fibronectin-fibrinogen heteropolymers.

About one-third of the alpha chains in the molecules in blood were found to be phosphorylated.

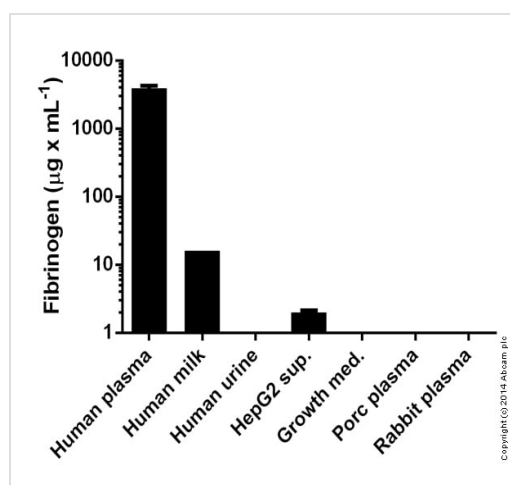
Conversion of fibrinogen to fibrin is triggered by thrombin, which cleaves fibrinopeptides A and B from alpha and beta chains, and thus exposes the N-terminal polymerization sites responsible for the formation of the soft clot. The soft clot is converted into the hard clot by factor XIIIa which catalyzes the epsilon-(gamma-glutamyl)lysine cross-linking between gamma chains (stronger) and between alpha chains (weaker) of different monomers.

Phosphorylation sites are present in the extracellular medium.

細胞内局在

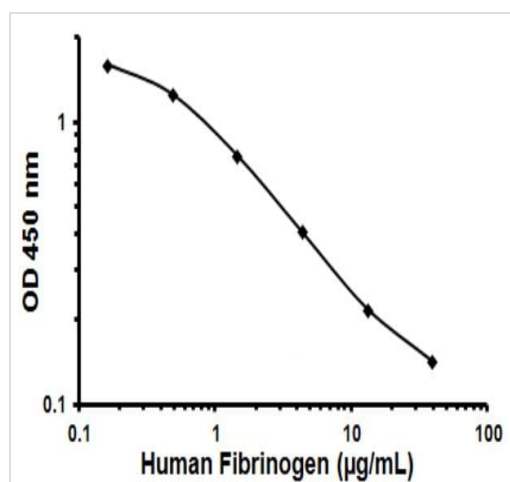
Secreted.

画像



Fibrinogen measured in various samples showing quantity (micrograms) per mL of tested sample

Sandwich ELISA - ab108842 Fibrinogen Human
ELISA Kit



Representative Standard Curve using ab108842.

Typical Standard Curve

Please note: All products are "FOR RESEARCH USE ONLY. NOT FOR USE IN DIAGNOSTIC PROCEDURES"

Our Abpromise to you: Quality guaranteed and expert technical support

- Replacement or refund for products not performing as stated on the datasheet
- Valid for 12 months from date of delivery
- Response to your inquiry within 24 hours

- We provide support in Chinese, English, French, German, Japanese and Spanish
- Extensive multi-media technical resources to help you
- We investigate all quality concerns to ensure our products perform to the highest standards

If the product does not perform as described on this datasheet, we will offer a refund or replacement. For full details of the Abpromise, please visit <https://www.abcam.co.jp/abpromise> or contact our technical team.

Terms and conditions

- Guarantee only valid for products bought direct from Abcam or one of our authorized distributors