

Human Factor B ELISA Kit ab137973

4 References 画像数 4

製品の概要

製品名	Human Factor B ELISA Kit			
検出方法	Colorimetric			
再現性	Intra-Assay (同時再現性)			
	サンプル	N	平均値	SD
	Overall			CV%
				5.3%
	Inter-Assay (日差再現性)			
	サンプル	N	平均値	SD
	Overall			CV%
				10.2%
サンプルの種類	Cell culture supernatant, Saliva, Milk, Serum, Plasma, Tissue, Cell Lysate, Cerebral Spinal Fluid			
アッセイタイプ	Sandwich (quantitative)			
検出感度	= 0.71 ng/ml			
検出範囲	2.188 ng/ml - 140 ng/ml			
添加回収試験	98 %			
全工程の試験時間	4h 00m			
ステップ	Multiple steps standard assay			
種交差性	交差種: Human			
製品の概要	Abcam's Factor B Human <i>in vitro</i> ELISA (Enzyme-Linked Immunosorbent Assay) kit is designed for the quantitative measurement of Human Factor B in plasma, serum, saliva, milk, and cell culture supernatants.			

A Factor B specific antibody has been precoated onto 96-well plates and blocked. Standards or test samples are added to the wells and subsequently a Factor B specific biotinylated detection antibody is added and then followed by washing with wash buffer. Streptavidin-Peroxidase Conjugate is added and unbound conjugates are washed away with wash buffer. TMB is then used to visualize Streptavidin-Peroxidase enzymatic reaction. TMB is catalyzed by Streptavidin-Peroxidase to produce a blue color product that changes into yellow after adding acidic stop solution. The density of yellow coloration is directly proportional to the amount of Factor B captured in plate.

The entire kit may be stored at -20°C for long term storage before reconstitution - Avoid repeated freeze-thaw cycles.

試験プラットフォーム

Microplate

製品の特性

保存方法

Store at -20°C. Please refer to protocols.

内容	1 x 96 tests
100X Streptavidin-Peroxidase Conjugate	1 x 80µl
10X Diluent M Concentrate	1 x 30ml
20X Wash Buffer Concentrate	2 x 30ml
50X Biotinylated Human Factor B Antibody	1 x 120µl
Chromogen Substrate	1 x 7ml
Factor B Microplate (12 x 8 well strips)	1 unit
Factor B Standard	1 vial
Sealing Tapes	3 units
Stop Solution	1 x 11ml

機能

Factor B which is part of the alternate pathway of the complement system is cleaved by factor D into 2 fragments: Ba and Bb. Bb, a serine protease, then combines with complement factor 3b to generate the C3 or C5 convertase. It has also been implicated in proliferation and differentiation of preactivated B-lymphocytes, rapid spreading of peripheral blood monocytes, stimulation of lymphocyte blastogenesis and lysis of erythrocytes. Ba inhibits the proliferation of preactivated B-lymphocytes.

関連疾患

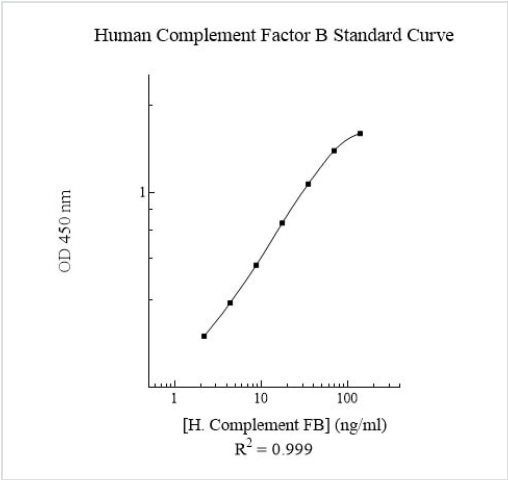
Defects in CFB are a cause of susceptibility to hemolytic uremic syndrome atypical type 4 (AHUS4) [MIM:612924]. An atypical form of hemolytic uremic syndrome. It is a complex genetic disease characterized by microangiopathic hemolytic anemia, thrombocytopenia, renal failure and absence of episodes of enterocolitis and diarrhea. In contrast to typical hemolytic uremic syndrome, atypical forms have a poorer prognosis, with higher death rates and frequent progression to end-stage renal disease. Note=Susceptibility to the development of atypical hemolytic uremic syndrome can be conferred by mutations in various components of or regulatory factors in the complement cascade system. Other genes may play a role in modifying the phenotype.

配列類似性

Belongs to the peptidase S1 family.
Contains 1 peptidase S1 domain.
Contains 3 Sushi (CCP/SCR) domains.
Contains 1 VWFA domain.

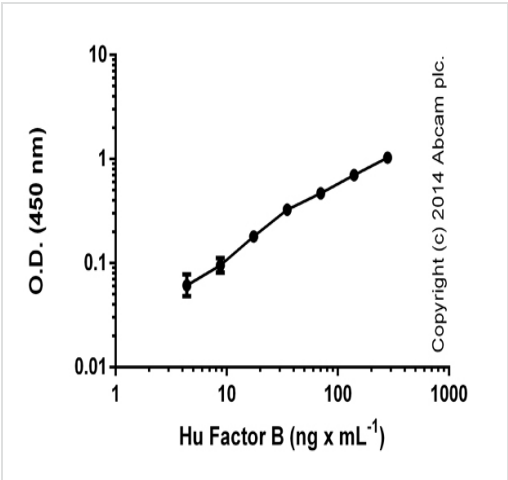
細胞内局在

Secreted.



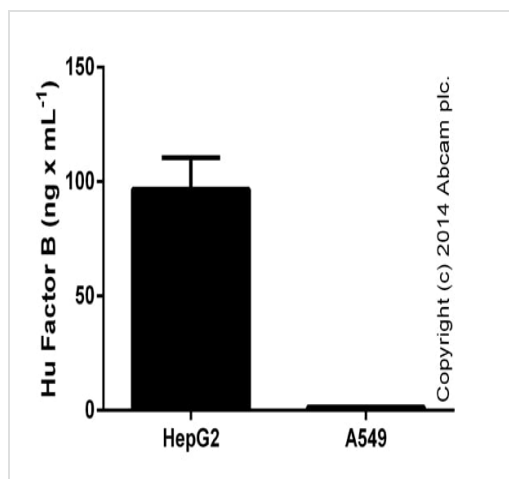
Human Complement Factor B typical standard curve

Representative Standard Curve using ab137973



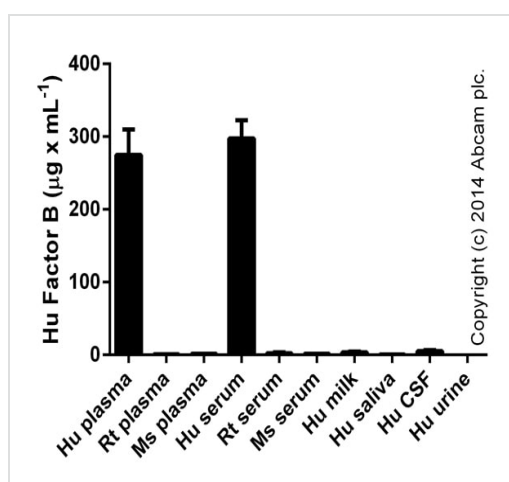
Standard curve with background signal subtracted (duplicates; +/- SD).

ELISA: Factor B Human ELISA Kit (ab137973)



Factor B measured in culture supernatants (dilution 1/1-1/30; duplicates +/- SD).

ELISA: Factor B Human ELISA Kit (ab137973)



Factor B in biological fluids (duplicates +/- SD). Tested dilution ranges: human plasma and serum at 1/1000-1/30000, others at 1/1-1/300.

ELISA: Factor B Human ELISA Kit (ab137973)

Please note: All products are "FOR RESEARCH USE ONLY. NOT FOR USE IN DIAGNOSTIC PROCEDURES"

Our Abpromise to you: Quality guaranteed and expert technical support

- Replacement or refund for products not performing as stated on the datasheet
- Valid for 12 months from date of delivery
- Response to your inquiry within 24 hours
- We provide support in Chinese, English, French, German, Japanese and Spanish
- Extensive multi-media technical resources to help you
- We investigate all quality concerns to ensure our products perform to the highest standards

If the product does not perform as described on this datasheet, we will offer a refund or replacement. For full details of the Abpromise, please visit <https://www.abcam.co.jp/abpromise> or contact our technical team.

Terms and conditions

- Guarantee only valid for products bought direct from Abcam or one of our authorized distributors