

Human EGFR ELISA Kit (ERBB) ab100505

[2 References](#) [画像数 4](#)

製品の概要

製品名	Human EGFR ELISA Kit (ERBB)
検出方法	Colorimetric
サンプルの種類	Cell culture supernatant, Serum, Plasma
アッセイタイプ	Sandwich (quantitative)
検出感度	< 4 pg/ml
検出範囲	2.74 pg/ml - 2000 pg/ml
添加回収試験	> 85 %

特定サンプルでの回収試験

サンプルの種類	平均 %	測定範囲
Cell culture supernatant	85.65	72% - 96%
Serum	105.4	94% - 116%
Plasma	107.2	96% - 119%

ステップ Multiple steps standard assay

種交差性 交差種: Human

製品の概要

Abcam's EGFR (ERBB) Human ELISA (Enzyme-Linked Immunosorbent Assay) kit is an *in vitro* enzyme-linked immunosorbent assay for the quantitative measurement of Human EGFR in serum, plasma, and cell culture supernatants.

This assay employs an antibody specific for Human EGFR coated on a 96-well plate. Standards and samples are pipetted into the wells and EGFR present in a sample is bound to the wells by the immobilized antibody. The wells are washed and biotinylated antiHuman EGFR antibody is added. After washing away unbound biotinylated antibody, HRP-conjugated streptavidin is pipetted to the wells. The wells are again washed, a TMB substrate solution is added to the wells and color develops in proportion to the amount of EGFR bound. The Stop Solution changes the color from blue to yellow, and the intensity of the color is measured at 450 nm.

Get higher sensitivity in only 90 minutes with Human soluble EGFR ELISA Kit ([ab193764](#)) from our SimpleStep ELISA® range.

特記事項 Optimisation may be required with urine samples.

試験プラットフォーム Microplate

製品の特性

保存方法 Store at -20°C. Please refer to protocols.

内容	1 x 96 tests
20X Wash Buffer	1 x 25ml
300X HRP-Streptavidin Concentrate	1 x 200µl
5X Assay Diluent B	1 x 15ml
Assay Diluent A	1 x 30ml
Biotinylated anti-Human EGFR	2 vials
EGFR Microplate (12 x 8 well strips)	1 unit
Recombinant Human EGFR Standard (lyophilized)	2 vials
Stop Solution	1 x 8ml
TMB One-Step Substrate Reagent	1 x 12ml

機能 Receptor tyrosine kinase binding ligands of the EGF family and activating several signaling cascades to convert extracellular cues into appropriate cellular responses. Known ligands include EGF, TGFA/TGF-alpha, amphiregulin, epigen/EPGN, BTC/betacellulin, epiregulin/EREG and HBEGF/heparin-binding EGF. Ligand binding triggers receptor homo- and/or heterodimerization and autophosphorylation on key cytoplasmic residues. The phosphorylated receptor recruits adapter proteins like GRB2 which in turn activates complex downstream signaling cascades. Activates at least 4 major downstream signaling cascades including the RAS-RAF-MEK-ERK, PI3 kinase-AKT, PLCgamma-PKC and STATs modules. May also activate the NF-kappa-B signaling cascade. Also directly phosphorylates other proteins like RGS16, activating its GTPase activity and probably coupling the EGF receptor signaling to the G protein-coupled receptor signaling. Also phosphorylates MUC1 and increases its interaction with SRC and CTNNB1/beta-catenin.

Isoform 2 may act as an antagonist of EGF action.

組織特異性 Ubiquitously expressed. Isoform 2 is also expressed in ovarian cancers.

関連疾患 Lung cancer

Inflammatory skin and bowel disease, neonatal, 2

配列類似性 Belongs to the protein kinase superfamily. Tyr protein kinase family. EGF receptor subfamily. Contains 1 protein kinase domain.

翻訳後修飾 Phosphorylation at Ser-695 is partial and occurs only if Thr-693 is phosphorylated.

Phosphorylation at Thr-678 and Thr-693 by PRKD1 inhibits EGF-induced MAPK8/JNK1

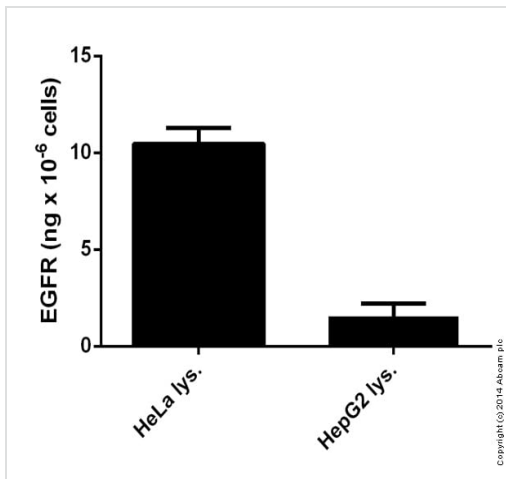
activation. Dephosphorylation by PTPRJ prevents endocytosis and stabilizes the receptor at the plasma membrane. Autophosphorylation at Tyr-1197 is stimulated by methylation at Arg-1199 and enhances interaction with PTPN6. Autophosphorylation at Tyr-1092 and/or Tyr-1110 recruits STAT3. Dephosphorylated by PTPN1 and PTPN2.

Monoubiquitinated and polyubiquitinated upon EGF stimulation; which does not affect tyrosine kinase activity or signaling capacity but may play a role in lysosomal targeting. Polyubiquitin linkage is mainly through 'Lys-63', but linkage through 'Lys-48', 'Lys-11' and 'Lys-29' also occurs. Deubiquitination by OTUD7B prevents degradation. Ubiquitinated by RNF115 and RNF126. Methylated. Methylation at Arg-1199 by PRMT5 stimulates phosphorylation at Tyr-1197.

細胞内局在

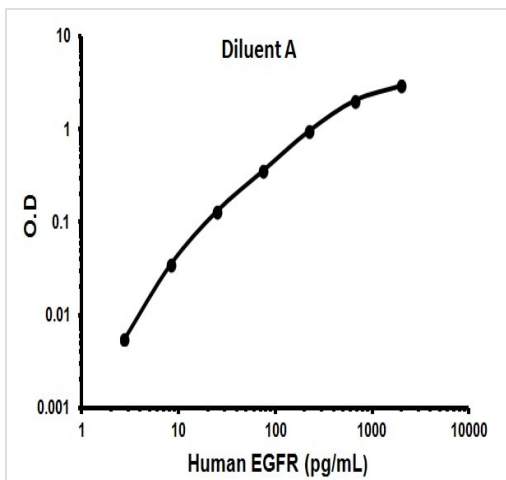
Secreted and Cell membrane. Endoplasmic reticulum membrane. Golgi apparatus membrane. Nucleus membrane. Endosome. Endosome membrane. Nucleus. In response to EGF, translocated from the cell membrane to the nucleus via Golgi and ER. Endocytosed upon activation by ligand. Colocalized with GPER1 in the nucleus of estrogen agonist-induced cancer-associated fibroblasts (CAF).

画像



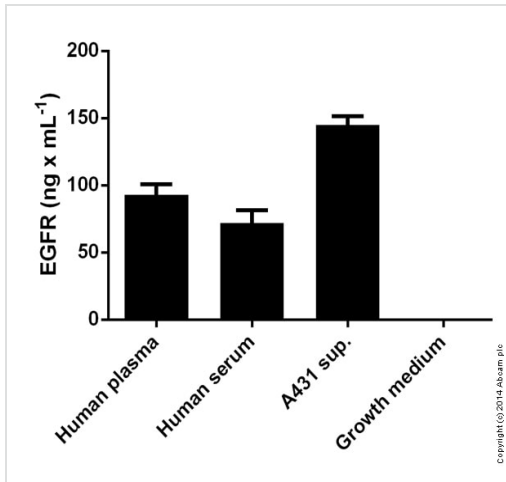
EGFR measured in cell lysates showing quantity (ng) per 1 million cells

Sandwich ELISA - ab100505 EGFR (ERBB) Human ELISA Kit



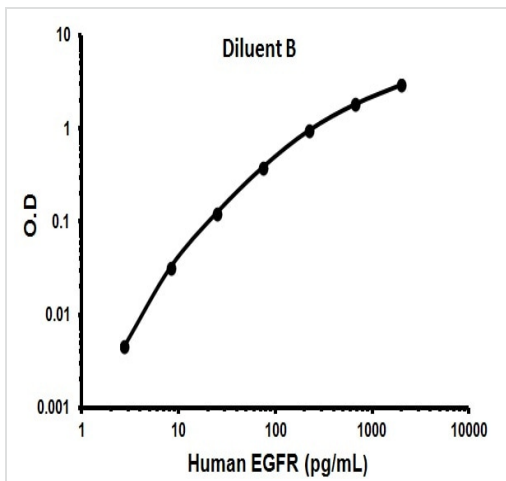
Representative Standard Curve using ab100505.

Typical Standard Curve



EGFR measured in various fluids showing quantity (ng) per mL of tested sample

Sandwich ELISA - ab100505 EGFR (ERBB) Human ELISA Kit



Representative Standard Curve using ab100505.

Typical Standard Curve

Please note: All products are "FOR RESEARCH USE ONLY. NOT FOR USE IN DIAGNOSTIC PROCEDURES"

Our Abpromise to you: Quality guaranteed and expert technical support

- Replacement or refund for products not performing as stated on the datasheet
- Valid for 12 months from date of delivery
- Response to your inquiry within 24 hours
- We provide support in Chinese, English, French, German, Japanese and Spanish
- Extensive multi-media technical resources to help you
- We investigate all quality concerns to ensure our products perform to the highest standards

If the product does not perform as described on this datasheet, we will offer a refund or replacement. For full details of the Abpromise, please visit <https://www.abcam.co.jp/abpromise> or contact our technical team.

Terms and conditions

- Guarantee only valid for products bought direct from Abcam or one of our authorized distributors