

Human Cytokeratin 8 ELISA Kit ab267810

リコンビナント SimpleStep ELISA

画像数 5

製品の概要

製品名 Human Cytokeratin 8 ELISA Kit

検出方法 Colorimetric

再現性 Intra-Assay (同時再現性)

サンプル	N	平均値	SD	CV%
Extract	8			3.7%

サンプルの種類 Tissue Extracts, Cell Lysate

アッセイタイプ Sandwich (quantitative)

検出感度 1.01 ng/ml

検出範囲 1.25 ng/ml - 80 ng/ml

添加回収試験

特定サンプルでの回収試験		
サンプルの種類	平均 %	測定範囲
Tissue Extracts	102	% - %
Cell Lysate	101	% - %

全工程の試験時間 1h 30m

ステップ One step assay

種交差性 交差種: Human

製品の概要 Human Cytokeratin 8 ELISA Kit (ab267810) is a single-wash 90 min sandwich ELISA designed for the quantitative measurement of Cytokeratin 8 protein in cell culture media, tissue extracts, and cell lysate. It uses our proprietary SimpleStep ELISA® technology. Quantitate Human Cytokeratin 8 with 1.01 ng/ml sensitivity.

SimpleStep ELISA® technology employs capture antibodies conjugated to an affinity tag that is recognized by the monoclonal antibody used to coat our SimpleStep ELISA® plates. This approach to sandwich ELISA allows the formation of the antibody-analyte sandwich complex in a single step, significantly reducing assay time. See the SimpleStep ELISA® protocol summary in

the image section for further details. Our SimpleStep ELISA® technology provides several benefits:

- Single-wash protocol reduces assay time to 90 minutes or less
- High sensitivity, specificity and reproducibility from superior antibodies
- Fully validated in biological samples
- 96-wells plate breakable into 12 x 8 wells strips

A 384-well SimpleStep ELISA® microplate (**ab203359**) is available to use as an alternative to the 96-well microplate provided with SimpleStep ELISA® kits.

特記事項

Keratin, type II cytoskeletal 8 is a major component of the intermediate filament cytoskeleton and is a marker for epithelial cells. Abnormal expression of Cytokeratin 8 is found in various forms of cancer, and Cytokeratin 8 has been used as a marker for circulating tumor cells.

Abcam has not and does not intend to apply for the REACH Authorisation of customers' uses of products that contain European Authorisation list (Annex XIV) substances. It is the responsibility of our customers to check the necessity of application of REACH Authorisation, and any other relevant authorisations, for their intended uses.

試験プラットフォーム

Pre-coated microplate (12 x 8 well strips)

製品の特性

保存方法

Store at +4°C. Please refer to protocols.

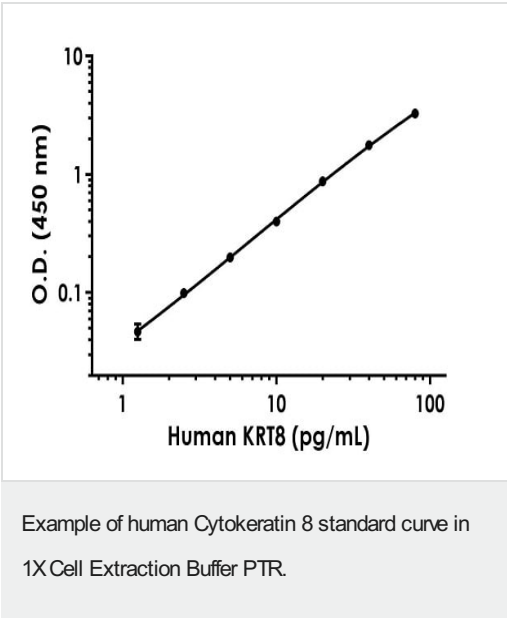
内容	1 x 96 tests
10X Human Cytokeratin 8 Capture Antibody	1 x 600µl
10X Human Cytokeratin 8 Detector Antibody	1 x 600µl
10X Wash Buffer PT (ab206977)	1 x 20ml
5X Cell Extraction Buffer PTR (ab193970)	1 x 10ml
Antibody Diluent CPR2	1 x 6ml
Human Cytokeratin 8 Lyophilized Recombinant Protein	2 vials
Plate Seals	1 unit
Sample Diluent NS (ab193972)	1 x 12ml
SimpleStep Pre-Coated 96-Well Microplate (ab206978)	1 unit
Stop Solution	1 x 12ml
TMB Development Solution	1 x 12ml

機能

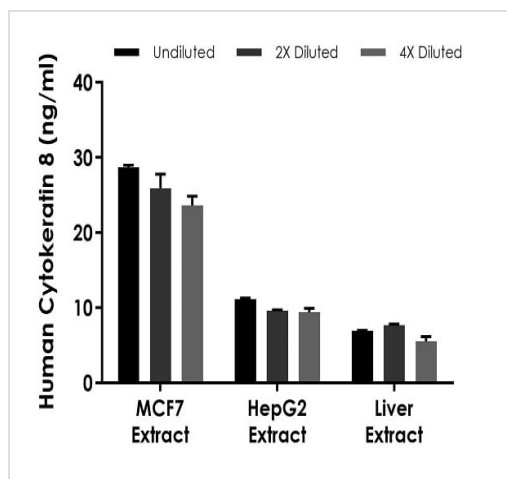
Together with KRT19, helps to link the contractile apparatus to dystrophin at the costameres of striated muscle.

組織特異性	Observed in muscle fibers accumulating in the costameres of myoplasm at the sarcolemma membrane in structures that contain dystrophin and spectrin. Expressed in gingival mucosa and hard palate of the oral cavity.
関連疾患	Cirrhosis
配列類似性	Belongs to the intermediate filament family.
翻訳後修飾	Phosphorylation on serine residues is enhanced during EGF stimulation and mitosis. Ser-74 phosphorylation plays an important role in keratin filament reorganization. O-glycosylated. O-GlcNAcylation at multiple sites increases solubility, and decreases stability by inducing proteasomal degradation. O-glycosylated (O-GlcNAcylated), in a cell cycle-dependent manner.
細胞内局在	Cytoplasm. Nucleus, nucleoplasm. Nucleus matrix.

画像

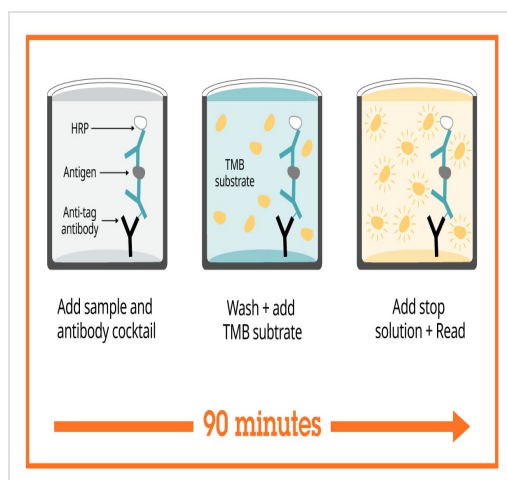


The Cytokeratin 8 standard curve was prepared as described in Section 10. Raw data values are shown in the table. Background-subtracted data values (mean +/- SD) are graphed.



Interpolated concentrations of native Cytokeratin 8 in human MCF7, HepG2, and liver homogenate extract samples based on 6.25 µg/mL, 31.25 µg/mL, and 100 µg/mL extract loads, respectively.

The concentrations of Cytokeratin 8 were measured in duplicate and interpolated from the Cytokeratin 8 standard curve and corrected for sample dilution. The interpolated dilution factor corrected values are plotted (mean \pm SD, $n=2$). The mean Cytokeratin 8 concentration was determined to be 26.10 ng/mL in MCF7 extract, 10.03 ng/ml in HepG2 extract, and 6.71 ng/ml in liver homogenate extract.



SimpleStep ELISA technology allows the formation of the antibody-antigen complex in one single step, reducing assay time to 90 minutes. Add samples or standards and antibody mix to wells all at once, incubate, wash, and add your final substrate. See protocol for a detailed step-by-step guide.

Sandwich ELISA - Human Cytokeratin 8 ELISA Kit (ab267810)

Powered by
recombinant antibodies



Research with confidence
Consistent and reproducible results



Long-term and scalable supply
Recombinant technology



Success from the first experiment
Confirmed specificity



Ethical standards compliant
Animal-free production

Sandwich ELISA - Human Cytokeratin 8 ELISA Kit
(ab267810)

To learn more about the advantages of recombinant antibodies see [here](#).

**Get more done with
SimpleStep ELISA**



Easy to use
Single-wash 90-minute protocol



Flexible
Matched antibody pairs available



Precision antibodies
High sensitivity, specificity and reproducibility



Scalable
Now in 10-pack and 384-well formats

Sandwich ELISA - Human Cytokeratin 8 ELISA Kit
(ab267810)

To learn more about the advantages of SimpleStep ELISA® kits see [here](#).

Please note: All products are "FOR RESEARCH USE ONLY. NOT FOR USE IN DIAGNOSTIC PROCEDURES"

Our Abpromise to you: Quality guaranteed and expert technical support

- Replacement or refund for products not performing as stated on the datasheet
- Valid for 12 months from date of delivery
- Response to your inquiry within 24 hours
- We provide support in Chinese, English, French, German, Japanese and Spanish
- Extensive multi-media technical resources to help you
- We investigate all quality concerns to ensure our products perform to the highest standards

If the product does not perform as described on this datasheet, we will offer a refund or replacement. For full details of the Abpromise, please visit <https://www.abcam.co.jp/abpromise> or contact our technical team.

Terms and conditions

- Guarantee only valid for products bought direct from Abcam or one of our authorized distributors