

Human CD70 ELISA Kit ab264621

リコンビナント SimpleStep ELISA®

画像数 5

製品の概要

製品名	Human CD70 ELISA Kit
検出方法	Colorimetric
再現性	Intra-Assay (同時再現性)

サンプル	N	平均値	SD	CV%
Extract	8			7.3%

サンプル	N	平均値	SD	CV%
Extract	3			8%

サンプルの種類	Cell culture extracts, Cell Lysate
アッセイタイプ	Sandwich (quantitative)
検出感度	0.1 ng/ml
検出範囲	0.28 ng/ml - 18 ng/ml
添加回収試験	特定サンプルでの回収試験

サンプルの種類	平均 %	測定範囲
Cell culture extracts	120	116% - 123%
Cell Lysate	123	121% - 126%

全工程の試験時間	1h 30m
ステップ	One step assay
種交差性	交差種: Human

製品の概要

Human CD70 ELISA Kit (ab264621) is a single-wash 90 min sandwich ELISA designed for the quantitative measurement of CD70 protein in cell lysate and cell culture extracts. It uses our proprietary SimpleStep ELISA® technology. Quantitate Human CD70 with 0.1 ng/ml sensitivity.

SimpleStep ELISA® technology employs capture antibodies conjugated to an affinity tag that is recognized by the monoclonal antibody used to coat our SimpleStep ELISA® plates. This approach to sandwich ELISA allows the formation of the antibody-analyte sandwich complex in a single step, significantly reducing assay time. See the SimpleStep ELISA® protocol summary in the image section for further details. Our SimpleStep ELISA® technology provides several benefits:

- Single-wash protocol reduces assay time to 90 minutes or less
- High sensitivity, specificity and reproducibility from superior antibodies
- Fully validated in biological samples
- 96-wells plate breakable into 12 x 8 wells strips

A 384-well SimpleStep ELISA® microplate (**ab203359**) is available to use as an alternative to the 96-well microplate provided with SimpleStep ELISA® kits.

#### 特記事項

CD70 is a cytokine which acts as a ligand to CD27. The binding of CD70 to CD27 induces the proliferation of co-stimulated T-cells and enhances cytolytic T-cell generation. CD70-CD27 pathway plays an important role in the generation and maintenance of T-cell immunity during antiviral response.

Abcam has not and does not intend to apply for the REACH Authorisation of customers' uses of products that contain European Authorisation list (Annex XIV) substances.

It is the responsibility of our customers to check the necessity of application of REACH Authorisation, and any other relevant authorisations, for their intended uses.

#### 試験プラットフォーム

Pre-coated microplate (12 x 8 well strips)

#### 製品の特性

#### 保存方法

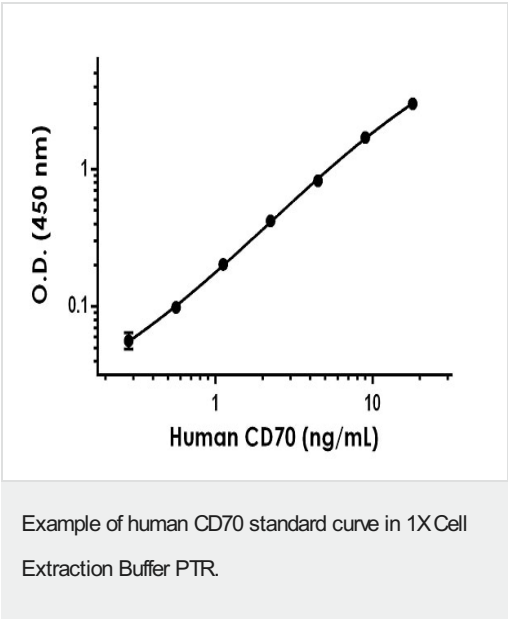
Store at +4°C. Please refer to protocols.

内容	1 x 96 tests
10X Human CD70 Capture Antibody	1 x 600µl
10X Human CD70 Detector Antibody	1 x 600µl
10X Wash Buffer PT (ab206977)	1 x 20ml
50X Cell Extraction Enhancer Solution (ab193971)	1 x 1ml
5X Cell Extraction Buffer PTR (ab193970)	1 x 10ml
Antibody Diluent 4BI	1 x 6ml
Human CD70 Lyophilized Recombinant Protein	2 vials
Plate Seals	1 unit
Sample Diluent NS (ab193972)	1 x 12ml
SimpleStep Pre-Coated 96-Well Microplate (ab206978)	1 unit

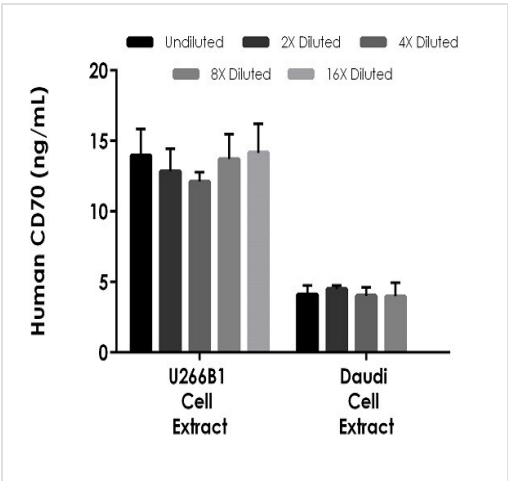
内容	1 x 96 tests
Stop Solution	1 x 12ml
TMB Development Solution	1 x 12ml

機能	Cytokine that binds to CD27. Plays a role in T-cell activation. Induces the proliferation of costimulated T-cells and enhances the generation of cytolytic T-cells.
配列類似性	Belongs to the tumor necrosis factor family.
細胞内局在	Membrane.

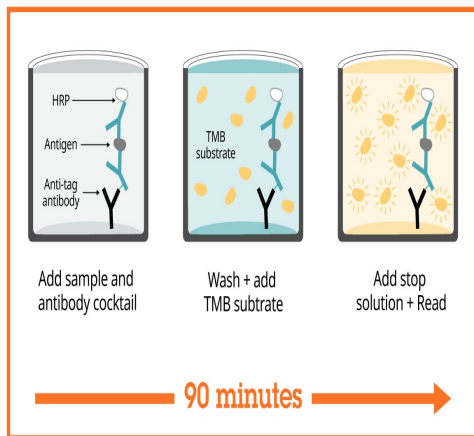
画像



The CD70 standard curve was prepared as described in Section 10. Raw data values are shown in the table. Background-subtracted data values (mean +/- SD) are graphed.



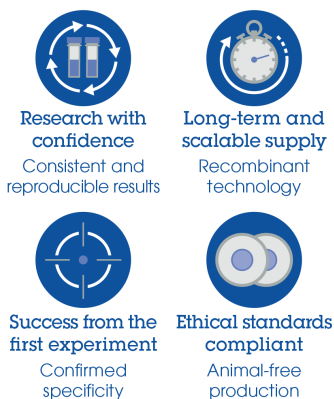
The concentrations of CD70 were measured in duplicate and interpolated from the CD70 standard curve and corrected for sample dilution. The interpolated dilution factor corrected values are plotted (mean +/- SD, n=2). The mean CD70 concentration was determined to be 13.35 ng/mL in U266B1 cell extract, 4.15 ng/mL in Daudi cell extract, and undetectable in PC-3 cell extract (data not shown).



Sandwich ELISA - Human CD70 ELISA Kit  
(ab264621)

SimpleStep ELISA technology allows the formation of the antibody-antigen complex in one single step, reducing assay time to 90 minutes. Add samples or standards and antibody mix to wells all at once, incubate, wash, and add your final substrate. See protocol for a detailed step-by-step guide.

#### Powered by recombinant antibodies



Sandwich ELISA - Human CD70 ELISA Kit  
(ab264621)

To learn more about the advantages of recombinant antibodies see [here](#).

#### Get more done with SimpleStep ELISA



Sandwich ELISA - Human CD70 ELISA Kit  
(ab264621)

To learn more about the advantages of SimpleStep ELISA<sup>®</sup> kits see [here](#).

**Please note:** All products are "FOR RESEARCH USE ONLY. NOT FOR USE IN DIAGNOSTIC PROCEDURES"

### **Our Abpromise to you: Quality guaranteed and expert technical support**

---

- Replacement or refund for products not performing as stated on the datasheet
- Valid for 12 months from date of delivery
- Response to your inquiry within 24 hours
  
- We provide support in Chinese, English, French, German, Japanese and Spanish
- Extensive multi-media technical resources to help you
- We investigate all quality concerns to ensure our products perform to the highest standards

If the product does not perform as described on this datasheet, we will offer a refund or replacement. For full details of the Abpromise, please visit <https://www.abcam.co.jp/abpromise> or contact our technical team.

### **Terms and conditions**

---

- Guarantee only valid for products bought direct from Abcam or one of our authorized distributors