

Human CD30 ELISA Kit ab236711

リコンビナント SimpleStep ELISA

1 References 画像数 7

製品の概要

製品名	Human CD30 ELISA Kit			
検出方法	Colorimetric			
再現性	Intra-Assay (同時再現性)			
	サンプル	N	平均値	SD
	Supernatant	5		CV%
				3.4%
	Inter-Assay (日差再現性)			
	サンプル	N	平均値	SD
	Supernatant	3		CV%
				2.9%
サンプルの種類	Cell culture supernatant, Serum, Hep Plasma, EDTA Plasma, Cit plasma			
アッセイタイプ	Sandwich (quantitative)			
検出感度	6.4 pg/ml			
検出範囲	28 pg/ml - 1800 pg/ml			
添加回収試験	特定サンプルでの回収試験			

サンプルの種類	平均 %	測定範囲
Cell culture supernatant	99	96% - 105%
Serum	90	90% - 91%
Cell culture media	87	85% - 88%
Hep Plasma	90	86% - 98%
EDTA Plasma	90	88% - 92%
Cit plasma	86	83% - 91%

全工程の試験時間	1h 30m
ステップ	One step assay
種交差性	交差種: Human
製品の概要	Human CD30 ELISA Kit (ab236711) is a single-wash 90 min sandwich ELISA designed for the quantitative measurement of CD30 protein in cit plasma, edta plasma, hep plasma, serum, and cell culture supernatant. It uses our proprietary SimpleStep ELISA® technology. Quantitate Human CD30 with 6.4 pg/ml sensitivity.

SimpleStep ELISA® technology employs capture antibodies conjugated to an affinity tag that is recognized by the monoclonal antibody used to coat our SimpleStep ELISA® plates. This approach to sandwich ELISA allows the formation of the antibody-analyte sandwich complex in a single step, significantly reducing assay time. See the SimpleStep ELISA® protocol summary in the image section for further details. Our SimpleStep ELISA® technology provides several benefits:

- Single-wash protocol reduces assay time to 90 minutes or less
- High sensitivity, specificity and reproducibility from superior antibodies
- Fully validated in biological samples
- 96-wells plate breakable into 12 x 8 wells strips

A 384-well SimpleStep ELISA® microplate (**ab203359**) is available to use as an alternative to the 96-well microplate provided with SimpleStep ELISA® kits.

試験プラットフォーム	Pre-coated microplate (12 x 8 well strips)
------------	--

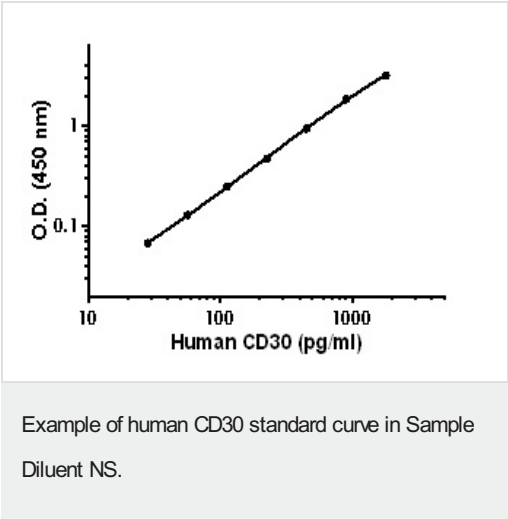
製品の特性

保存方法	Store at +4°C. Please refer to protocols.
------	---

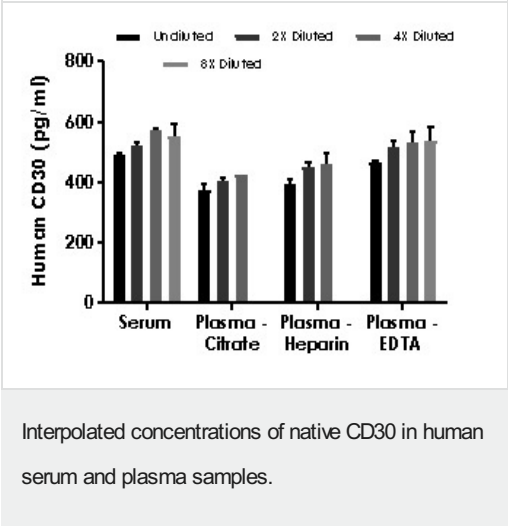
内容	1 x 96 tests	1 x 96 tests
10X Human CD30 Capture Antibody	1 x 600µl	1 x 600µl
10X Human CD30 Detector Antibody	1 x 600µl	1 x 600µl
10X Wash Buffer PT (ab206977)	1 x 20ml	1 x 20ml
Antibody Diluent CPI2	1 x 6ml	1 x 6ml
Human CD30 Lyophilized Recombinant Protein	2 vials	2 vials
Plate Seals	1 unit	1 unit
Sample Diluent NS (ab193972)	1 x 50ml	1 x 50ml
SimpleStep Pre-Coated 96-Well Microplate (ab206978)	1 unit	1 unit
Stop Solution	1 x 12ml	1 x 12ml
TMB Development Solution	1 x 12ml	1 x 12ml

機能	Receptor for TNFSF8/CD30L. May play a role in the regulation of cellular growth and transformation of activated lymphoblasts. Regulates gene expression through activation of NF-kappa-B.
配列類似性	Contains 6 TNFR-Cys repeats.
翻訳後修飾	Phosphorylated on serine and tyrosine residues.
細胞内局在	Cytoplasm and Cell membrane.

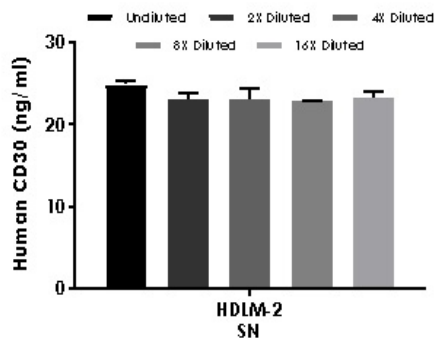
画像



The CD30 standard curve was prepared as described in Section 10. Raw data values are shown in the table. Background-subtracted data values (mean +/- SD) are graphed.

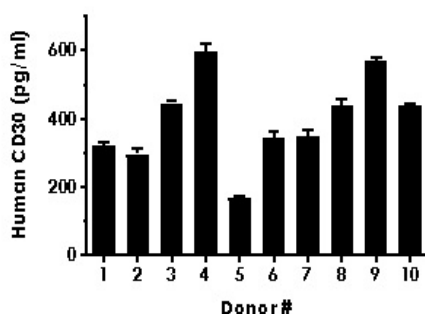


The concentrations of CD30 were measured in duplicates, interpolated from the CD30 standard curves and corrected for sample dilution. Undiluted samples are as follows: serum 50%, plasma (citrate) 50%, plasma (heparin) 50%, and plasma (EDTA) 50%. The interpolated dilution factor corrected values are plotted (mean +/- SD, n=2). The mean CD30 concentration was determined to be 535.6 pg/ml in serum, 395.3 pg/ml in plasma (citrate), 434.5 pg/ml in plasma (heparin), and 512.9 pg/ml in plasma (EDTA).



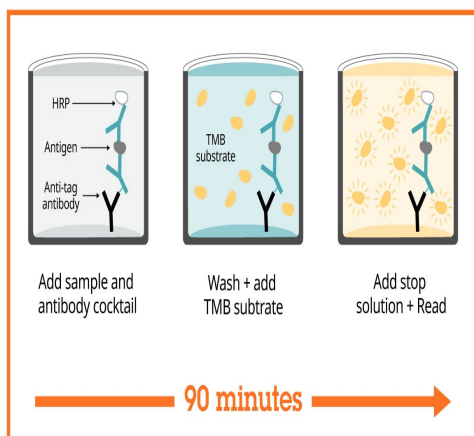
Interpolated concentrations of native CD30 in human cell culture supernatant samples.

The concentrations of CD30 were measured in duplicates, interpolated from the CD30 standard curves and corrected for sample dilution. Undiluted samples are as follows: HDLM-2 supernatant 6.3%. The interpolated dilution factor corrected values are plotted (mean \pm SD, $n=2$). The mean CD30 concentration was determined to be 23.1 ng/mL in HDLM-2 supernatant.



Serum from ten individual healthy human male donors was measured in duplicate.

Interpolated dilution factor corrected values are plotted (mean \pm SD, $n=2$). The mean CD30 concentration was determined to be 398.1 pg/mL with a range of 170.5 – 597.9 pg/mL.



Sandwich ELISA - Human CD30 ELISA Kit
(ab236711)

SimpleStep ELISA technology allows the formation of the antibody-antigen complex in one single step, reducing assay time to 90 minutes. Add samples or standards and antibody mix to wells all at once, incubate, wash, and add your final substrate. See protocol for a detailed step-by-step guide.

Powered by
recombinant antibodies



Research with confidence
Consistent and reproducible results



Long-term and scalable supply
Recombinant technology



Success from the first experiment
Confirmed specificity



Ethical standards compliant
Animal-free production

Sandwich ELISA - Human CD30 ELISA Kit
(ab236711)

To learn more about the advantages of recombinant antibodies see [here](#).

**Get more done with
SimpleStep ELISA**



Easy to use
Single-wash 90-minute protocol



Flexible
Matched antibody pairs available



Precision antibodies
High sensitivity, specificity and reproducibility



Scalable
Now in 10-pack and 384-well formats

Sandwich ELISA - Human CD30 ELISA Kit
(ab236711)

To learn more about the advantages of SimpleStep ELISA[®] kits see [here](#).

Please note: All products are "FOR RESEARCH USE ONLY. NOT FOR USE IN DIAGNOSTIC PROCEDURES"

Our Abpromise to you: Quality guaranteed and expert technical support

- Replacement or refund for products not performing as stated on the datasheet
- Valid for 12 months from date of delivery
- Response to your inquiry within 24 hours
- We provide support in Chinese, English, French, German, Japanese and Spanish
- Extensive multi-media technical resources to help you

- We investigate all quality concerns to ensure our products perform to the highest standards

If the product does not perform as described on this datasheet, we will offer a refund or replacement. For full details of the Abpromise, please visit <https://www.abcam.co.jp/abpromise> or contact our technical team.

Terms and conditions

- Guarantee only valid for products bought direct from Abcam or one of our authorized distributors