

### Human CD200R ELISA Kit (CD200R1) ab272196

リコンビナント SimpleStep ELISA

画像数 6

#### 製品の概要

製品名 Human CD200R ELISA Kit (CD200R1)

検出方法 Colorimetric

再現性 Intra-Assay (同時再現性)

サンプル	N	平均値	SD	CV%
Serum	8			7.5%

Inter-Assay (日差再現性)

サンプル	N	平均値	SD	CV%
Serum	3			7.7%

サンプルの種類 Serum, Cell Lysate, Hep Plasma, EDTA Plasma, Cit plasma

アッセイタイプ Sandwich (quantitative)

検出感度 11.89 pg/ml

検出範囲 46.88 pg/ml - 3000 pg/ml

添加回収試験 特定サンプルでの回収試験

サンプルの種類	平均 %	測定範囲
Serum	115	112% - 120%
Cell Lysate	99	90% - 116%
Hep Plasma	91	81% - 99%
EDTA Plasma	93	81% - 110%
Cit plasma	92	83% - 109%

全工程の試験時間 1h 30m

ステップ One step assay

## 種交差性

交差種: Human

## 製品の概要

Human CD200R ELISA kit (ab272196) is a single-wash 90 min sandwich ELISA designed for the quantitative measurement of CD200R protein in serum, plasma and cell and tissue culture extracts. It uses our proprietary SimpleStep ELISA® technology. Quantitate Human CD200R with 11.89 pg/mL sensitivity.

SimpleStep ELISA® technology employs capture antibodies conjugated to an affinity tag that is recognized by the monoclonal antibody used to coat our SimpleStep ELISA® plates. This approach to sandwich ELISA allows the formation of the antibody-analyte sandwich complex in a single step, significantly reducing assay time. See the SimpleStep ELISA® protocol summary in the image section for further details. Our SimpleStep ELISA® technology provides several benefits:

- Single-wash protocol reduces assay time to 90 minutes or less
- High sensitivity, specificity and reproducibility from superior antibodies
- Fully validated in biological samples
- 96-wells plate breakable into 12 x 8 wells strips

A 384-well SimpleStep ELISA® microplate (**ab203359**) is available to use as an alternative to the 96-well microplate provided with SimpleStep ELISA® kits.

## 特記事項

CD200R (CD200R1), is a transmembrane glycoprotein member of the immunoglobulin superfamily. CD200R acts as an inhibitory receptor for the CD200/OX-2 cell surface glycoprotein. CD200R is mainly expressed in myeloid cells and CD4+ T-cells and known to interact with CD200 in variety of cells including neurons, epithelial cells, endothelial cells, fibroblasts, and lymphoid cells. Activation of CD200R regulates the expression of proinflammatory molecules including TNF-alpha, interferons, and inducible nitric oxide synthase. Recent studies suggest that CD200R may prove useful in monitoring changes in bone metabolism. Mouse, rat and cow share 57%, 57% and 60% sequence homology with human CD200R.

Abcam has not and does not intend to apply for the REACH Authorisation of customers' uses of products that contain European Authorisation list (Annex XIV) substances.

It is the responsibility of our customers to check the necessity of application of REACH Authorisation, and any other relevant authorisations, for their intended uses.

## 試験プラットフォーム

Pre-coated microplate (12 x 8 well strips)

## 製品の特性

### 保存方法

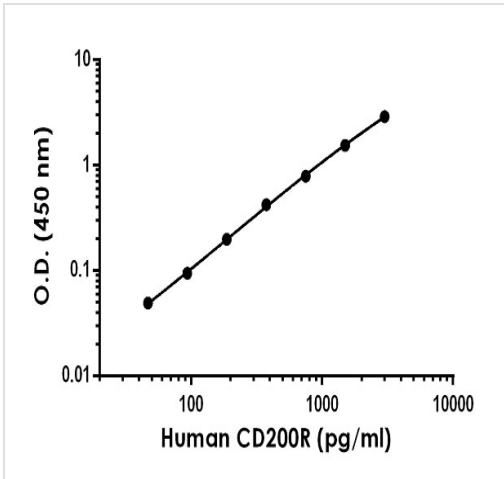
Store at +4°C. Please refer to protocols.

内容	1 x 96 tests
10X Human CD200R (CD200R1) Capture Antibody	1 x 600µl
10X Human CD200R (CD200R1) Detector Antibody	1 x 600µl

内容	1 x 96 tests
10X Wash Buffer PT (ab206977)	1 x 20ml
50X Cell Extraction Enhancer Solution (ab193971)	1 x 1ml
5X Cell Extraction Buffer PTR (ab193970)	1 x 10ml
Antibody Diluent 5BI	1 x 6ml
Human CD200R (CD200R1) Lyophilized Recombinant Protein	2 vials
Plate Seals	1 unit
Sample Diluent NS (ab193972)	1 x 50ml
SimpleStep Pre-Coated 96-Well Microplate (ab206978)	1 unit
Stop Solution	1 x 12ml
TMB Development Solution	1 x 12ml

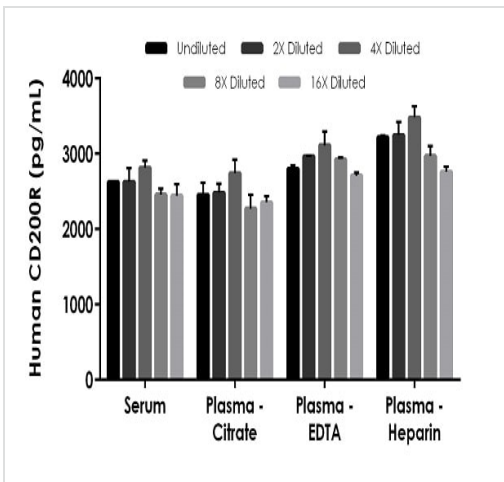
<b>機能</b>	Receptor for the CD200/OX2 cell surface glycoprotein. Also binds to HHV-8 K14 viral CD200 homolog with identical affinity and kinetics as the host CD200.
<b>組織特異性</b>	Expressed in granulocytes, monocytes, most T cells, neutrophils, basophils and a subset of NK, NKT and B cells (at protein level). Expressed in bone marrow, lymph nodes, spleen, lung, liver, spinal cord, kidney. Expressed in monocyte-derived dendritic and mast cells.
<b>配列類似性</b>	Belongs to the CD200R family. Contains 1 Ig-like C2-type (immunoglobulin-like) domain. Contains 1 Ig-like V-type (immunoglobulin-like) domain.
<b>翻訳後修飾</b>	The mature form of isoform 2 and/or isoform 4 starts at sequence position 27 of the corresponding isoform.
<b>細胞内局在</b>	Secreted and Cell membrane.

## 画像



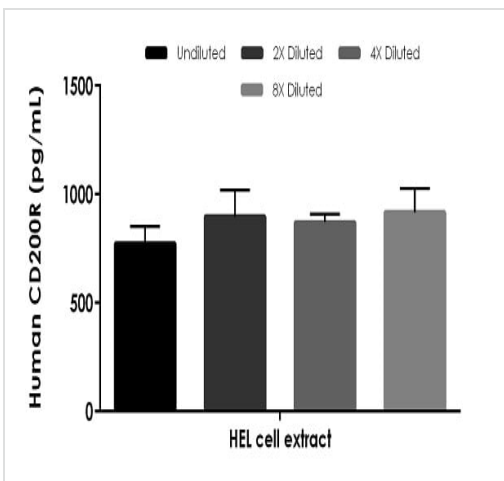
Example of human CD200R standard curve in Sample Diluent NS.

The CD200R standard curve was prepared as described in Section 10. Raw data values are shown in the table. Background-subtracted data values (mean +/- SD) are graphed.



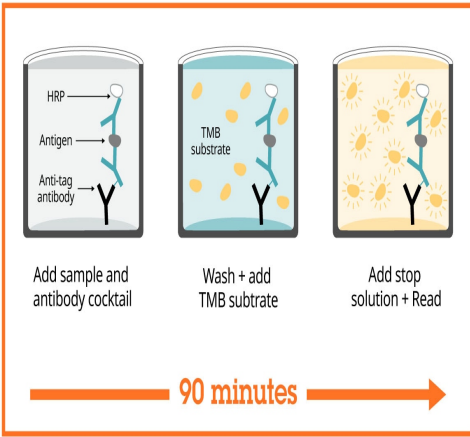
Interpolated concentrations of native CD200R in human serum, and plasma samples.

The concentrations of CD200R were measured in duplicates, interpolated from the CD200R standard curves and corrected for sample dilution. Undiluted samples are as follows: serum 50%, plasma (citrate) 50%, plasma (EDTA) 50%, and plasma (heparin) 50%. The interpolated dilution factor corrected values are plotted (mean +/- SD, n=2). The mean CD200R concentration was determined to be 2,595 pg/mL in serum, 2,460 pg/mL in plasma (citrate), 2,904 pg/mL in plasma (EDTA), and 3,137 pg/mL in plasma (heparin).



Interpolated concentrations of native CD200R in human HEL cell extract based on a 500 µg/mL extract load.

The concentrations of CD200R were measured in duplicate and interpolated from the CD200R standard curve and corrected for sample dilution. The interpolated dilution factor corrected values are plotted (mean +/- SD, n=2). The mean CD200R concentration was determined to be 817.1 pg/mL in HEL cell extract sample.



SimpleStep ELISA technology allows the formation of the antibody-antigen complex in one single step, reducing assay time to 90 minutes. Add samples or standards and antibody mix to wells all at once, incubate, wash, and add your final substrate. See protocol for a detailed step-by-step guide.

Sandwich ELISA - Human CD200R ELISA Kit  
(CD200R1) (ab272196)

Powered by  
recombinant antibodies

 <p><b>Research with confidence</b> Consistent and reproducible results</p>	 <p><b>Long-term and scalable supply</b> Recombinant technology</p>
 <p><b>Success from the first experiment</b> Confirmed specificity</p>	 <p><b>Ethical standards compliant</b> Animal-free production</p>

To learn more about the advantages of recombinant antibodies see [here](#).

Sandwich ELISA - Human CD200R ELISA Kit  
(CD200R1) (ab272196)

### Get more done with SimpleStep ELISA



**Easy to use**  
Single-wash 90-minute protocol



**Flexible**  
Matched antibody pairs available



**Precision antibodies**  
High sensitivity, specificity and reproducibility



**Scalable**  
Now in 10-pack and 384-well formats

To learn more about the advantages of SimpleStep ELISA<sup>®</sup> kits see [here](#).

Sandwich ELISA - Human CD200R ELISA Kit  
(CD200R1) (ab272196)

**Please note:** All products are "FOR RESEARCH USE ONLY. NOT FOR USE IN DIAGNOSTIC PROCEDURES"

### Our Abpromise to you: Quality guaranteed and expert technical support

---

- Replacement or refund for products not performing as stated on the datasheet
- Valid for 12 months from date of delivery
- Response to your inquiry within 24 hours
- We provide support in Chinese, English, French, German, Japanese and Spanish
- Extensive multi-media technical resources to help you
- We investigate all quality concerns to ensure our products perform to the highest standards

If the product does not perform as described on this datasheet, we will offer a refund or replacement. For full details of the Abpromise, please visit <https://www.abcam.co.jp/abpromise> or contact our technical team.

### Terms and conditions

---

- Guarantee only valid for products bought direct from Abcam or one of our authorized distributors