

Human CCL23 ELISA Kit ab216169

リコンビナント SimpleStep ELISA

画像数 6

製品の概要

製品名	Human CCL23 ELISA Kit			
検出方法	Colorimetric			
再現性	Intra-Assay (同時再現性)			
	サンプル	N	平均値	SD
	Serum	8		CV%
				8.4%
	Inter-Assay (日差再現性)			
	サンプル	N	平均値	SD
	Serum	3		CV%
				5.5%
サンプルの種類	Cell culture supernatant, Serum, Hep Plasma, EDTA Plasma, Cit plasma			
アッセイタイプ	Sandwich (quantitative)			
検出感度	1.54 pg/ml			
検出範囲	7.03 pg/ml - 450 pg/ml			
添加回収試験	特定サンプルでの回収試験			

サンプルの種類	平均 %	測定範囲
Cell culture supernatant	91	89% - 92%
Serum	106	98% - 117%
Other biological fluids	93	88% - 96%
Hep Plasma	98	88% - 106%
EDTA Plasma	101	98% - 106%
Cit plasma	105	93% - 111%

全工程の試験時間	1h 30m
ステップ	One step assay
種交差性	交差種: Human
製品の概要	<p>Human CCL23 ELISA Kit (ab216169) is a single-wash 90 min sandwich ELISA designed for the quantitative measurement of CCL23 protein in cell culture supernatant, cit plasma, edta plasma, hep plasma, and serum. It uses our proprietary SimpleStep ELISA® technology. Quantitate Human CCL23 with 1.54 pg/ml sensitivity.</p> <p>SimpleStep ELISA® technology employs capture antibodies conjugated to an affinity tag that is recognized by the monoclonal antibody used to coat our SimpleStep ELISA® plates. This approach to sandwich ELISA allows the formation of the antibody-analyte sandwich complex in a single step, significantly reducing assay time. See the SimpleStep ELISA® protocol summary in the image section for further details. Our SimpleStep ELISA® technology provides several benefits:</p> <ul style="list-style-type: none"> <li>- Single-wash protocol reduces assay time to 90 minutes or less</li> <li>- High sensitivity, specificity and reproducibility from superior antibodies</li> <li>- Fully validated in biological samples</li> <li>- 96-wells plate breakable into 12 x 8 wells strips</li> </ul> <p>A 384-well SimpleStep ELISA® microplate (<b>ab203359</b>) is available to use as an alternative to the 96-well microplate provided with SimpleStep ELISA® kits.</p>
特記事項	CCL23 (Macrophage inflammatory protein 3) is a chemokine involved in the recruitment of monocytes, neutrophils and resting T cells. CCL23 functions by inhibition myeloid progenitor cell proliferation. CCL23 is found at high levels in the synovial fluid of patients with rheumatoid arthritis.
試験プラットフォーム	Pre-coated microplate (12 x 8 well strips)

## 製品の特性

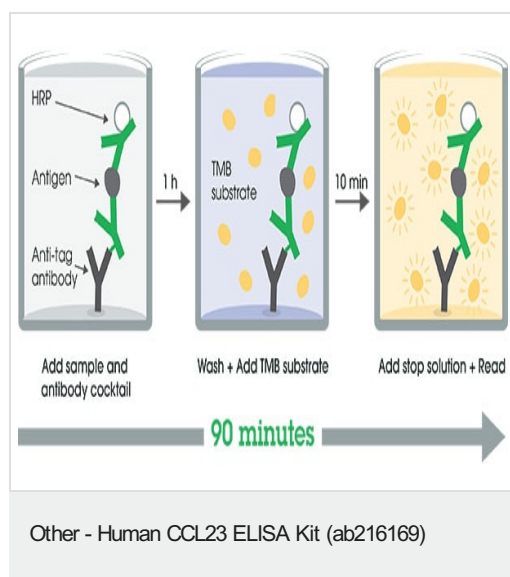
**保存方法** Store at +4°C. Please refer to protocols.

内容	1 x 96 tests
10X Human CCL23 Detector Antibody	1 x 600µl
10X Wash Buffer PT (ab206977)	1 x 20ml
Antibody Diluent 5BI	1 x 6ml
Human CCL23 Capture Antibody (Lyophilized)	1 vial
Human CCL23 Lyophilized Recombinant Protein	2 vials
Plate Seals	1 unit
Sample Diluent NS (ab193972)	1 x 50ml

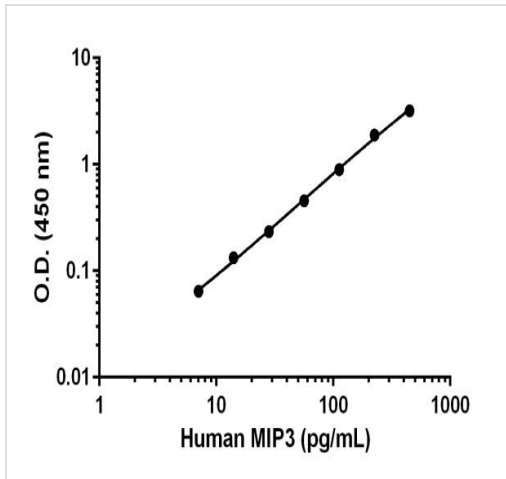
内容	1 x 96 tests
SimpleStep Pre-Coated 96-Well Microplate (ab206978)	1 unit
Stop Solution	1 x 12ml
TMB Development Solution	1 x 12ml

<b>機能</b>	Shows chemotactic activity for monocytes, resting T-lymphocytes, and neutrophils, but not for activated lymphocytes. Inhibits proliferation of myeloid progenitor cells in colony formation assays. This protein can bind heparin. Binds CCR1. CCL23(19-99), CCL23(22-99), CCL23(27-99), CCL23(30-99) are more potent chemoattractants than the small-inducible cytokine A23.
<b>組織特異性</b>	High levels in adult lung, liver, skeletal muscle and pancreas. Moderate levels in fetal liver, adult bone marrow and placenta. The short form is the major species and the longer form was detected only in very low abundance. CCL23(19-99), CCL23(22-99), CCL23(27-99), CCL23(30-99) are found in high levels in synovial fluids from rheumatoid patients.
<b>配列類似性</b>	Belongs to the intercrine beta (chemokine CC) family.
<b>細胞内局在</b>	Secreted.

## 画像

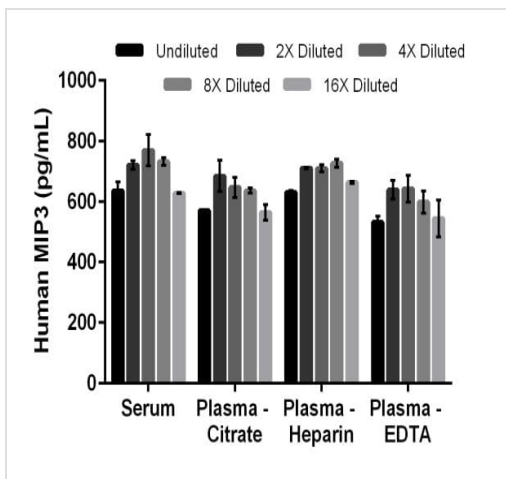


SimpleStep ELISA technology allows the formation of the antibody-antigen complex in one single step, reducing assay time to 90 minutes. Add samples or standards and antibody mix to wells all at once, incubate, wash, and add your final substrate. See protocol for a detailed step-by-step guide.



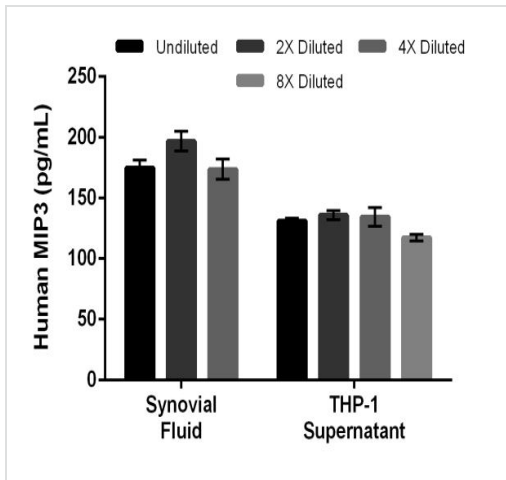
Background-subtracted data values (mean  $\pm$  SD) are graphed.

Example of human MIP3 standard curve in Sample Diluent NS.



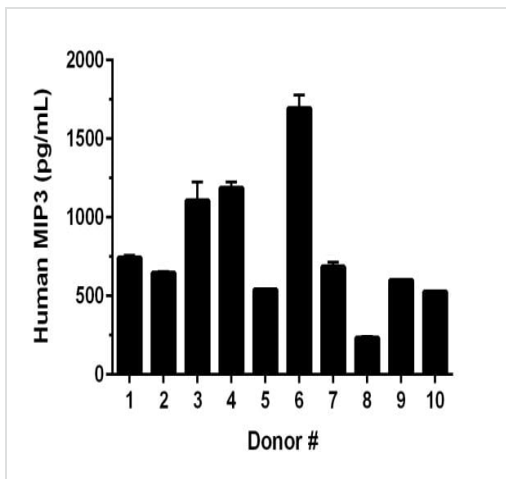
The concentrations of MIP3 were measured in duplicates, interpolated from the MIP3 standard curves and corrected for sample dilution. Undiluted samples are as follows: serum 50%, plasma (citrate) 50%, plasma (heparin) 50% and plasma (EDTA) 50%. The interpolated dilution factor corrected values are plotted (mean  $\pm$  SD,  $n=2$ ). The mean MIP3 concentration was determined to be 698 pg/mL in serum, 621 pg/mL in plasma (citrate), 689 pg/mL in plasma (heparin) and 592 pg/mL in plasma (EDTA).

Interpolated concentrations of native MIP3 in human serum and plasma samples.



Interpolated concentrations of native MIP3 in human synovial fluid and THP-1 cell culture supernatant samples

The concentrations of MIP3 were measured in duplicates, interpolated from the MIP3 standard curves and corrected for sample dilution. Undiluted samples are as follows: synovial fluid 25% and THP-1 supernatant 50%. The interpolated dilution factor corrected values are plotted (mean  $\pm$  SD, n=2). The mean MIP3 concentration was determined to be 182 pg/mL in synovial fluid and 130 pg/mL in THP-1 supernatant.



Serum from ten individual healthy human male donors was measured in duplicate.

Interpolated dilution factor corrected values are plotted (mean  $\pm$  SD, n=2). The mean MIP3 concentration was determined to be 797 pg/mL with a range of 229 – 1,754 pg/mL.

Powered by  
recombinant antibodies



**Research with confidence**  
Consistent and reproducible results



**Long-term and scalable supply**  
Recombinant technology



**Success from the first experiment**  
Confirmed specificity



**Ethical standards compliant**  
Animal-free production

Sandwich ELISA - Human CCL23 ELISA Kit  
(ab216169)

To learn more about the advantages of recombinant antibodies see [here](#).

**Please note:** All products are "FOR RESEARCH USE ONLY. NOT FOR USE IN DIAGNOSTIC PROCEDURES"

### Our Abpromise to you: Quality guaranteed and expert technical support

---

- Replacement or refund for products not performing as stated on the datasheet
- Valid for 12 months from date of delivery
- Response to your inquiry within 24 hours
- We provide support in Chinese, English, French, German, Japanese and Spanish
- Extensive multi-media technical resources to help you
- We investigate all quality concerns to ensure our products perform to the highest standards

If the product does not perform as described on this datasheet, we will offer a refund or replacement. For full details of the Abpromise, please visit <https://www.abcam.co.jp/abpromise> or contact our technical team.

### Terms and conditions

---

- Guarantee only valid for products bought direct from Abcam or one of our authorized distributors