

Human Arginase 1 ELISA Kit ab230930

リコンビナント SimpleStep ELISA

3 References 画像数 5

製品の概要

製品名	Human Arginase 1 ELISA Kit				
検出方法	Colorimetric				
再現性	Intra-Assay (同時再現性)				
	サンプル	N	平均値	SD	CV%
	Tissue	8			2.2%
	Inter-Assay (日差再現性)				
	サンプル	N	平均値	SD	CV%
	Tissue	3			4.4%
サンプルの種類	Tissue Extracts				
アッセイタイプ	Sandwich (quantitative)				
検出感度	17.77 pg/ml				
検出範囲	187.5 pg/ml - 12000 pg/ml				
添加回収試験	特定サンプルでの回収試験				
	サンプルの種類	平均 %		測定範囲	
	Tissue Extracts	103		99% - 107%	
全工程の試験時間	1h 30m				
ステップ	One step assay				
種交差性	交差種: Human				
製品の概要	Human Arginase 1 ELISA Kit (ab230930) is a single-wash 90 min sandwich ELISA designed for				

SimpleStep ELISA® technology employs capture antibodies conjugated to an affinity tag that is recognized by the monoclonal antibody used to coat our SimpleStep ELISA® plates. This

approach to sandwich ELISA allows the formation of the antibody-analyte sandwich complex in a single step, significantly reducing assay time. See the SimpleStep ELISA® protocol summary in the image section for further details. Our SimpleStep ELISA® technology provides several benefits:

- Single-wash protocol reduces assay time to 90 minutes or less
- High sensitivity, specificity and reproducibility from superior antibodies
- Fully validated in biological samples
- 96-wells plate breakable into 12 x 8 wells strips

A 384-well SimpleStep ELISA® microplate (**ab203359**) is available to use as an alternative to the 96-well microplate provided with SimpleStep ELISA® kits.

#### 特記事項

Abcam has not and does not intend to apply for the REACH Authorisation of customers' uses of products that contain European Authorisation list (Annex XIV) substances. It is the responsibility of our customers to check the necessity of application of REACH Authorisation, and any other relevant authorisations, for their intended uses.

#### 試験プラットフォーム

Pre-coated microplate (12 x 8 well strips)

#### 製品の特徴

#### 保存方法

Store at +4°C. Please refer to protocols.

内容	1 x 96 tests
10X Human Arginase 1 Capture Antibody	1 x 600µl
10X Human Arginase 1 Detector Antibody	1 x 600µl
10X Wash Buffer PT (ab206977)	1 x 20ml
50X Cell Extraction Enhancer Solution (ab193971)	1 x 1ml
5X Cell Extraction Buffer PTR (ab193970)	1 x 10ml
Antibody Diluent 4BI	1 x 6ml
Human Arginase 1 Lyophilized Recombinant Protein	2 vials
Plate Seals	1 unit
Sample Diluent NS (ab193972)	1 x 12ml
SimpleStep Pre-Coated 96-Well Microplate (ab206978)	1 unit
Stop Solution	1 x 12ml
TMB Development Solution	1 x 12ml

#### パスウェイ

Nitrogen metabolism; urea cycle; L-ornithine and urea from L-arginine: step 1/1.

#### 関連疾患

Defects in ARG1 are the cause of argininemia (ARGIN) [MIM:207800]; also known as

hyperargininemia. Argininemia is a rare autosomal recessive disorder of the urea cycle. Arginine is elevated in the blood and cerebrospinal fluid, and periodic hyperammonemia occurs. Clinical manifestations include developmental delay, seizures, mental retardation, hypotonia, ataxia, progressive spastic quadriplegia.

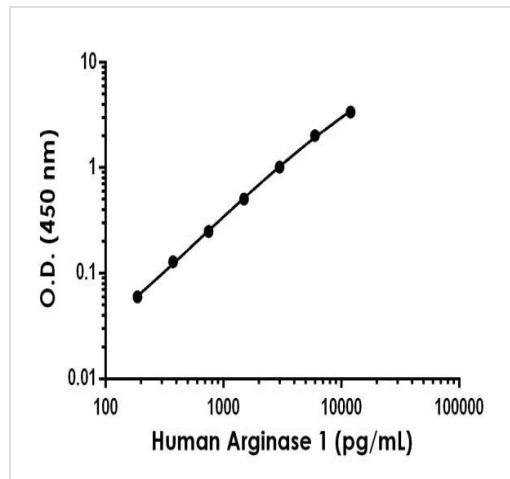
配列類似性

Belongs to the arginase family.

細胞内局在

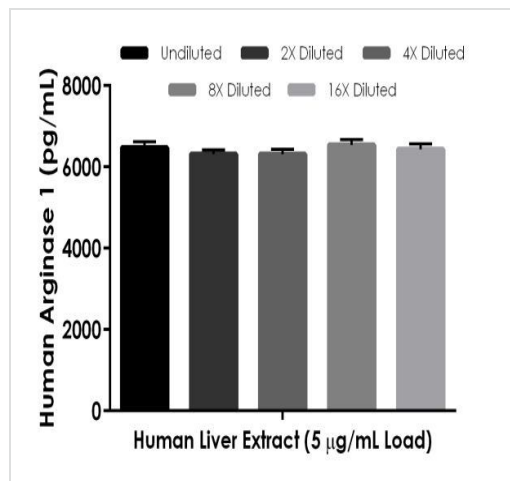
Cytoplasm.

## 画像



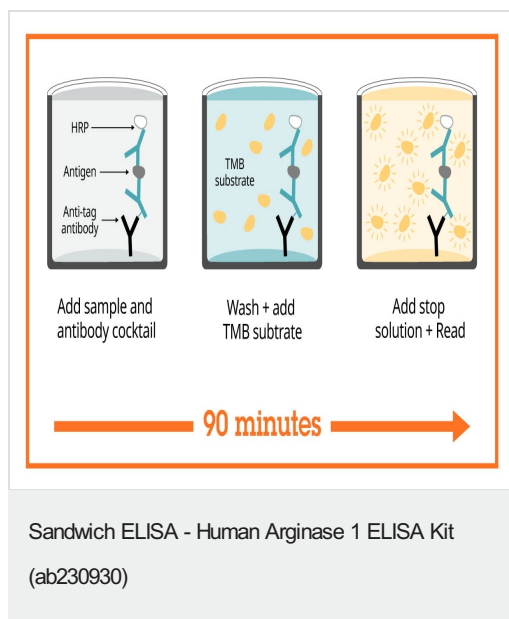
Background-subtracted data values (mean  $\pm$  SD) are graphed.

Example of human Arginase 1 standard curve in 1X Cell Extraction Buffer PTR.



The concentrations of Arginase 1 were measured in duplicate and interpolated from the Arginase 1 standard curve and corrected for sample dilution. The interpolated dilution factor corrected values are plotted (mean  $\pm$  SD,  $n=2$ ). The mean Arginase 1 concentration was determined to be 6383.5 pg/mL in 5  $\mu$ g /mL liver extract.

Interpolated concentrations of native Arginase 1 in human liver extract based on a 5  $\mu$ g/mL extract load.



SimpleStep ELISA technology allows the formation of the antibody-antigen complex in one single step, reducing assay time to 90 minutes. Add samples or standards and antibody mix to wells all at once, incubate, wash, and add your final substrate. See protocol for a detailed step-by-step guide.



To learn more about the advantages of recombinant antibodies see [here](#).

**Get more done with  
SimpleStep ELISA**



**Easy to use**

Single-wash 90-minute protocol



**Flexible**

Matched antibody pairs available



**Precision antibodies**

High sensitivity, specificity and reproducibility



**Scalable**

Now in 10-pack and 384-well formats

Sandwich ELISA - Human Arginase 1 ELISA Kit  
(ab230930)

To learn more about the advantages of SimpleStep ELISA® kits see [here](#).

**Please note:** All products are "FOR RESEARCH USE ONLY. NOT FOR USE IN DIAGNOSTIC PROCEDURES"

### Our Abpromise to you: Quality guaranteed and expert technical support

---

- Replacement or refund for products not performing as stated on the datasheet
- Valid for 12 months from date of delivery
- Response to your inquiry within 24 hours
- We provide support in Chinese, English, French, German, Japanese and Spanish
- Extensive multi-media technical resources to help you
- We investigate all quality concerns to ensure our products perform to the highest standards

If the product does not perform as described on this datasheet, we will offer a refund or replacement. For full details of the Abpromise, please visit <https://www.abcam.co.jp/abpromise> or contact our technical team.

### Terms and conditions

---

- Guarantee only valid for products bought direct from Abcam or one of our authorized distributors