

Human alpha 1 Antitrypsin ELISA Kit (SERPINA1) ab189579

SimpleStep ELISA

7 References 画像数 6

製品の概要

製品名	Human alpha 1 Antitrypsin ELISA Kit (SERPINA1)				
検出方法	Colorimetric				
再現性	Intra-Assay (同時再現性)				
サンプル		N	平均値	SD	CV%
Overall		5			3.9%
					Inter-Assay (日差再現性)
サンプル		N	平均値	SD	CV%
Overall		3			2.1%
サンプルの種類	Serum, Hep Plasma, EDTA Plasma, Cit plasma				
アッセイタイプ	Sandwich (quantitative)				
検出感度	13 ng/ml				
検出範囲	31.25 ng/ml - 2000 ng/ml				
添加回収試験	特定サンプルでの回収試験				
サンプルの種類			平均 %	測定範囲	
Serum			96	92% - 101%	
Hep Plasma			99	94% - 102%	
EDTA Plasma			77	70% - 87%	
Cit plasma			85	83% - 86%	
全工程の試験時間	1h 30m				
ステップ	One step assay				
種交差性	交差種: Human				

製品の概要

非交差種: Goat, Cow, Pig, Cynomolgus monkey, Macaque monkey

Human alpha 1 Antitrypsin ELISA Kit (SERPINA1) (ab189579) is a single-wash 90 min sandwich ELISA designed for the quantitative measurement of alpha 1 Antitrypsin (SERPINA1) protein in cit plasma, hep plasma, serum, and edta plasma. It uses our proprietary SimpleStep ELISA® technology. Quantitate Human alpha 1 Antitrypsin (SERPINA1) with 13 ng/ml sensitivity.

SimpleStep ELISA® technology employs capture antibodies conjugated to an affinity tag that is recognized by the monoclonal antibody used to coat our SimpleStep ELISA® plates. This approach to sandwich ELISA allows the formation of the antibody-analyte sandwich complex in a single step, significantly reducing assay time. See the SimpleStep ELISA® protocol summary in the image section for further details. Our SimpleStep ELISA® technology provides several benefits:

- Single-wash protocol reduces assay time to 90 minutes or less
- High sensitivity, specificity and reproducibility from superior antibodies
- Fully validated in biological samples
- 96-wells plate breakable into 12 x 8 wells strips

A 384-well SimpleStep ELISA® microplate (**ab203359**) is available to use as an alternative to the 96-well microplate provided with SimpleStep ELISA® kits.

ASSAY SPECIFICITY

This kit recognizes both native and recombinant human alpha 1 Antitrypsin protein in serum, plasma, and cell culture supernatant, cell and tissue extract samples only.

Normal human urine and saliva samples tested negative for this kit.

CROSS REACTIVITY

Human alpha 1 Anti-chymotrypsin protein and human PAI protein were prepared at 2,000 ng/mL and 1,000 ng/mL respectively and assayed for cross reactivity. No cross-reactivity was observed.

INTERFERENCE

Human alpha 1 Anti-chymotrypsin protein and human PAI protein were prepared at 2,000 ng/mL and 1,000 ng/mL respectively and assayed for and tested for interference. No interference with was observed.

SPECIES REACTIVITY

This kit recognizes human alpha 1 Antitrypsin protein.

Other species reactivity was determined by measuring alpha 1 Antitrypsin (1:10,000) serum samples of various species, interpolating the protein concentrations from the human standard curve, and expressing the interpolated concentrations as a percentage of the protein concentration in human serum assayed at the same dilution.

Reactivity < 3% was determined for the following species: Mouse, Rat, Hamster, Guinea Pig,

Rabbit, Dog, Goat, Pig and Cow.

CALIBRATION

This immunoassay is calibrated against a highly purified human alpha 1 Antitrypsin. The NIBSC/WHO unclassified purified human alpha 1 Antitrypsin preparation 05/162 was evaluated in this kit.

The dose response curve of the unclassified standard alpha 1 Antitrypsin parallels the SimpleStep standard curve. To convert sample values obtained with the SimpleStep Human alpha 1 Antitrypsin kit to approximate NIBSC 05/162 units, use the equation below.

$$\text{NIBSC (05/162) approximate value (ng/mL)} = 0.3649 \times \text{SimpleStep Human alpha 1 Antitrypsin value (ng/mL)}$$

特記事項

alpha 1 Antitrypsin (SERPINA1) is a serine protease inhibitor found in a variety of biological fluids. While it can inhibit trypsin, chymotrypsin, and plasminogen activator, it's main target is elastase. Alpha 1 antitrypsin plays a critical role in the lung by inhibiting the activity of elastase, produced by neutrophils during inflammatory responses. The aberrant form plays a role in coagulation and insulin induced NO synthesis. Alpha 1 antitrypsin deficiency results in emphysema and may also result in liver disease.

試験プラットフォーム

Microplate

製品の特徴

保存方法

Store at +4°C. Please refer to protocols.

内容	1 x 96 tests	10 x 96 tests
10X Human alpha 1 Antitrypsin Capture Antibody	1 x 600µl	10 x 600µl
10X Human alpha 1 Antitrypsin Detector Antibody	1 x 600µl	10 x 600µl
10X Wash Buffer PT (ab206977)	1 x 20ml	1 x 200ml
Antibody Diluent 4BI	1 x 6ml	10 x 6ml
Human alpha 1 Antitrypsin Lyophilized Purified Protein	2 vials	20 vials
Plate Seals	1 unit	10 units
Sample Diluent NS (ab193972)	1 x 50ml	2 x 250ml
SimpleStep Pre-Coated 96-Well Microplate (ab206978)	1 unit	10 units
Stop Solution	1 x 12ml	1 x 120ml
TMB Development Solution	1 x 12ml	1 x 120ml

機能

Inhibitor of serine proteases. Its primary target is elastase, but it also has a moderate affinity for plasmin and thrombin. Irreversibly inhibits trypsin, chymotrypsin and plasminogen activator. The

aberrant form inhibits insulin-induced NO synthesis in platelets, decreases coagulation time and has proteolytic activity against insulin and plasmin.
Short peptide from AAT: reversible chymotrypsin inhibitor. It also inhibits elastase, but not trypsin. Its major physiological function is the protection of the lower respiratory tract against proteolytic destruction by human leukocyte elastase (HLE).

組織特異性

Ubiquitous. Expressed in leukocytes and plasma.

関連疾患

Alpha-1-antitrypsin deficiency

配列類似性

Belongs to the serpin family.

ドメイン

The reactive center loop (RCL) extends out from the body of the protein and directs binding to the target protease. The protease cleaves the serpin at the reactive site within the RCL, establishing a covalent linkage between the carboxyl group of the serpin reactive site and the serine hydroxyl of the protease. The resulting inactive serpin-protease complex is highly stable.

翻訳後修飾

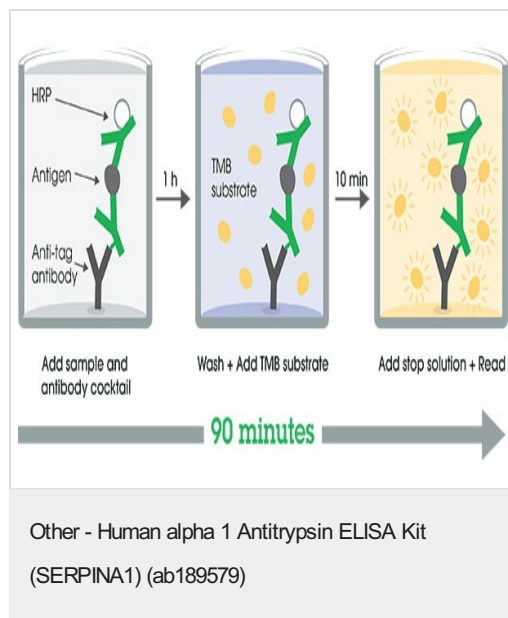
N-glycosylated. Differential glycosylation produces a number of isoforms. N-linked glycan at Asn-107 is alternatively di-antennary, tri-antennary or tetra-antennary. The glycan at Asn-70 is di-antennary with trace amounts of tri-antennary. Glycan at Asn-271 is exclusively di-antennary. Structure of glycans at Asn-70 and Asn-271 is Hex5HexNAc4. The structure of the antennae is Neu5Ac(alpha1-6)Gal(beta1-4)GlcNAc attached to the core structure Man(alpha1-6)[Man(alpha1-3)]Man(beta1-4)GlcNAc(beta1-4)GlcNAc. Some antennae are fucosylated, which forms a Lewis-X determinant.

Proteolytic processing may yield the truncated form that ranges from Asp-30 to Lys-418.

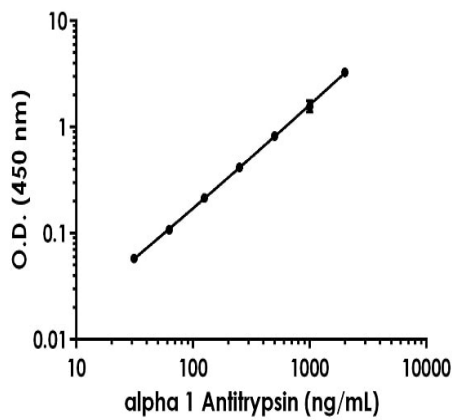
細胞内局在

Secreted. Endoplasmic reticulum. The S and Z allele are not secreted effectively and accumulate intracellularly in the endoplasmic reticulum and Secreted, extracellular space, extracellular matrix.

画像



SimpleStep ELISA technology allows the formation of the antibody-antigen complex in one single step, reducing assay time to 90 minutes. Add samples or standards and antibody mix to wells all at once, incubate, wash, and add your final substrate. See protocol for a detailed step-by-step guide.



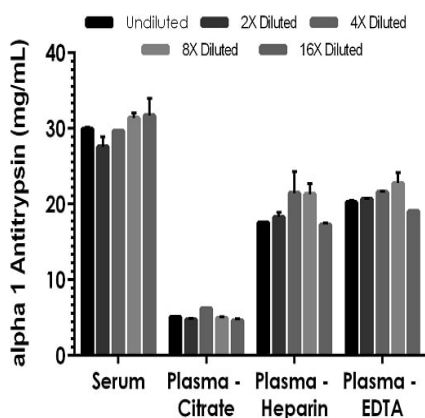
Example of alpha 1 Antitrypsin standard curve.

Background-subtracted data values (mean \pm SD) are graphed.

Concentration (ng/mL)	O.D 450 nm		Mean O.D
	1	2	
0	0.076	0.078	0.077
31.25	0.135	0.135	0.135
62.5	0.185	0.185	0.185
125	0.280	0.305	0.293
250	0.481	0.512	0.496
500	0.896	0.911	0.903
1,000	1.515	1.791	1.653
2,000	3.439	3.278	3.359

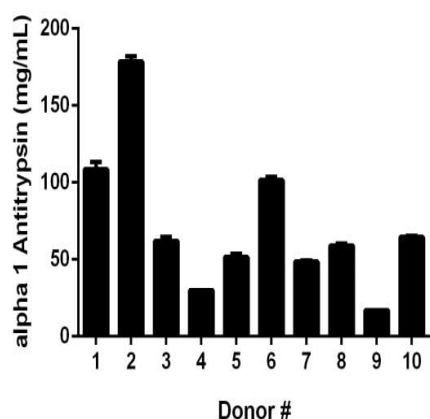
Standard curve

Example of human alpha 1 Antitrypsin standard curve in Sample Diluent NS. The alpha 1 Antitrypsin standard curve was prepared as described. Raw data values are shown in the table. Background-subtracted data values (mean \pm SD) are graphed.



Interpolated concentrations of native alpha 1 Antitrypsin in human serum and plasma samples.

The concentrations of alpha 1 Antitrypsin were measured in duplicates, interpolated from the alpha 1 Antitrypsin standard curves and corrected for sample dilution. Undiluted samples are as follows: serum 0.005%, plasma (citrate) 0.025%, plasma (heparin) 0.005%, and plasma (EDTA) 0.005%. The interpolated dilution factor corrected values are plotted (mean \pm SD, n=2). The mean alpha 1 Antitrypsin concentration was determined to be 30 mg/mL in serum, 5 mg/mL in plasma (citrate), 19 mg/mL in plasma (heparin) and 21 mg/mL in in plasma (EDTA).



Observed alpha 1 Antitrypsin levels in individual donor normal Human serum (n=10).

The mean alpha 1 Antitrypsin concentration was determined to be 72 mg/mL with a range of 17-181 mg/mL.

Dilution Factor	Interpolated value	0.005 % Human Serum	0.025 % Human Plasma (Citrate)	0.005% Human Plasma (EDTA)	0.005% Human Plasma (Heparin)
Undiluted	ng/mL	1,497	1,271	878	1,012
	% Expected value	100	100	100	100
2	ng/mL	689	595	457	517
	% Expected value	92	94	104	102
4	ng/mL	371	368	268	270
	% Expected value	99	122	122	107
8	ng/mL	196	155	133	142
	% Expected value	105	98	121	112
16	ng/mL	99	72	54	60
	% Expected value	106	91	98	94

Linearity of dilution.

Linearity of dilution is determined based on interpolated values from the standard curve. Linearity of dilution defines a sample concentration interval in which interpolated target concentrations are directly proportional to sample dilution.

Native alpha 1 Antitrypsin was measured in the following biological samples in a 2-fold dilution series. Sample dilutions are made in Sample Diluent NS.

Please note: All products are "FOR RESEARCH USE ONLY. NOT FOR USE IN DIAGNOSTIC PROCEDURES"

Our Abpromise to you: Quality guaranteed and expert technical support

- Replacement or refund for products not performing as stated on the datasheet
- Valid for 12 months from date of delivery
- Response to your inquiry within 24 hours
- We provide support in Chinese, English, French, German, Japanese and Spanish
- Extensive multi-media technical resources to help you
- We investigate all quality concerns to ensure our products perform to the highest standards

If the product does not perform as described on this datasheet, we will offer a refund or replacement. For full details of the Abpromise, please visit <https://www.abcam.co.jp/abpromise> or contact our technical team.

Terms and conditions

- Guarantee only valid for products bought direct from Abcam or one of our authorized distributors