

Human ACTH ELISA Kit (adrenocorticotrophic hormone)
ab267814

リコンビナント SimpleStep ELISA[®]

画像数 6

製品の概要

製品名 Human ACTH ELISA Kit (adrenocorticotrophic hormone)
検出方法 Colorimetric
再現性 Intra-Assay (同時再現性)

サンプル	N	平均値	SD	CV%
Serum	3			1.6%

Inter-Assay (日差再現性)

サンプル	N	平均値	SD	CV%
Serum	8			1.9%

サンプルの種類 Serum, Hep Plasma, EDTA Plasma, Cit plasma

アッセイタイプ Sandwich (quantitative)

検出感度 1.2 pg/ml

検出範囲 2.5 pg/ml - 160 pg/ml

添加回収試験 特定サンプルでの回収試験

サンプルの種類	平均 %	測定範囲
Serum	86	82% - 90%
Hep Plasma	84	82% - 85%
EDTA Plasma	96	94% - 98%
Cit plasma	88	87% - 89%

全工程の試験時間 1h 30m

ステップ One step assay

種交差性

交差種: Human

製品の概要

Human ACTH ELISA Kit (adrenocorticotrophic hormone) (ab267814) is a single-wash 90 min sandwich ELISA designed for the quantitative measurement of ACTH (adrenocorticotrophic hormone) protein in edta plasma, hep plasma, serum, and cit plasma. It uses our proprietary SimpleStep ELISA® technology. Quantitate Human ACTH (adrenocorticotrophic hormone) with 1.2 pg/ml sensitivity.

SimpleStep ELISA® technology employs capture antibodies conjugated to an affinity tag that is recognized by the monoclonal antibody used to coat our SimpleStep ELISA® plates. This approach to sandwich ELISA allows the formation of the antibody-analyte sandwich complex in a single step, significantly reducing assay time. See the SimpleStep ELISA® protocol summary in the image section for further details. Our SimpleStep ELISA® technology provides several benefits:

- Single-wash protocol reduces assay time to 90 minutes or less
- High sensitivity, specificity and reproducibility from superior antibodies
- Fully validated in biological samples
- 96-wells plate breakable into 12 x 8 wells strips

A 384-well SimpleStep ELISA® microplate (**ab203359**) is available to use as an alternative to the 96-well microplate provided with SimpleStep ELISA® kits.

特記事項

ACTH, adrenocorticotrophic hormone, is a peptide hormone cleavage product of the POMC protein produced by the pituitary gland. ACTH plays an important role in stress and circadian rhythm signaling. ACTH's primary action is on the adrenal cortex, where its binding induces the secretion of glucocorticoid steroid hormones.

Abcam has not and does not intend to apply for the REACH Authorisation of customers' uses of products that contain European Authorisation list (Annex XIV) substances. It is the responsibility of our customers to check the necessity of application of REACH Authorisation, and any other relevant authorisations, for their intended uses.

試験プラットフォーム

Pre-coated microplate (12 x 8 well strips)

製品の特性

保存方法

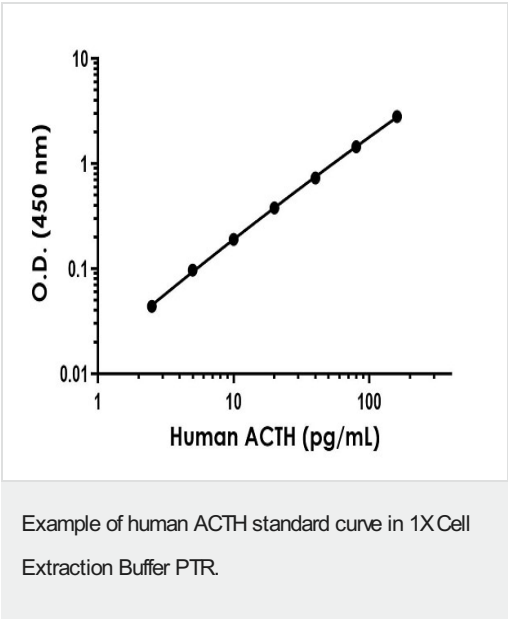
Store at +4°C. Please refer to protocols.

内容	1 x 96 tests
10X Human ACTH (adrenocorticotrophic hormone) Capture Antibody	1 x 600µl
10X Human ACTH (adrenocorticotrophic hormone) Detector Antibody	1 x 600µl
10X Wash Buffer PT (ab206977)	1 x 20ml
5X Cell Extraction Buffer PTR (ab193970)	1 x 10ml
Antibody Diluent 4BI	1 x 6ml
Human ACTH (adrenocorticotrophic hormone) Lyophilized Protein	2 vials

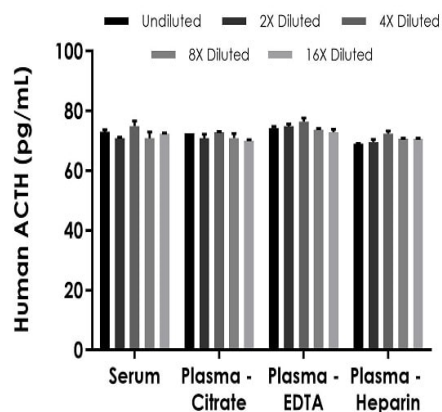
内容	1 x 96 tests
Plate Seals	1 unit
Sample Diluent NS (ab193972)	1 x 12ml
SimpleStep Pre-Coated 96-Well Microplate (ab206978)	1 unit
Stop Solution	1 x 12ml
TMB Development Solution	1 x 12ml

関連性	<p>ACTH occurs in cells of the anterior pituitary and in neurons in brain. It regulates the corticosteroid production in the adrenal cortex. Beta endorphin and Met enkephalin are endogenous opiates. MSH (melanocyte stimulating hormone) increases the pigmentation of skin by increasing melanin production in melanocytes.</p>
細胞内局在	<p>Secreted</p>

画像

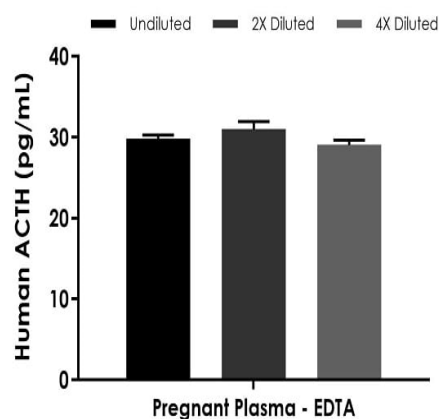


The ACTH standard curve was prepared as described in Section 10. Raw data values are shown in the table. Background-subtracted data values (mean +/- SD) are graphed.



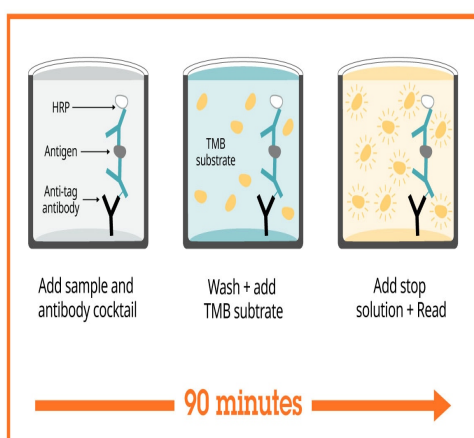
Interpolated concentrations of spike ACTH in human serum and plasma.

The concentrations of ACTH were measured in duplicates, interpolated from the ACTH standard curves and corrected for sample dilution. Undiluted samples are as follows: serum 25%, plasma (citrate) 25%, plasma (EDTA) 25%, and plasma (heparin) 25%.



Interpolated concentrations of native ACTH in human plasma (EDTA) (from late-term pregnant donors) samples.

The concentrations of ACTH were measured in duplicates, interpolated from the ACTH standard curves and corrected for sample dilution. Undiluted samples are as follows: pregnant plasma (EDTA) 25%. The interpolated dilution factor corrected values are plotted (mean \pm SD, $n=2$). The mean ACTH concentration was determined to be 30 pg/mL in plasma (EDTA) (from late-term pregnant donors).



SimpleStep ELISA technology allows the formation of the antibody-antigen complex in one single step, reducing assay time to 90 minutes. Add samples or standards and antibody mix to wells all at once, incubate, wash, and add your final substrate. See protocol for a detailed step-by-step guide.

Sandwich ELISA - Human ACTH ELISA Kit
(adrenocorticotrophic hormone) (ab267814)

Powered by
recombinant antibodies



Research with confidence
Consistent and reproducible results



Long-term and scalable supply
Recombinant technology



Success from the first experiment
Confirmed specificity



Ethical standards compliant
Animal-free production

Sandwich ELISA - Human ACTH ELISA Kit
(adrenocorticotrophic hormone) (ab267814)

To learn more about the advantages of recombinant antibodies see [here](#).

**Get more done with
SimpleStep ELISA**



Easy to use
Single-wash 90-minute protocol



Flexible
Matched antibody pairs available



Precision antibodies
High sensitivity, specificity and reproducibility



Scalable
Now in 10-pack and 384-well formats

Sandwich ELISA - Human ACTH ELISA Kit
(adrenocorticotrophic hormone) (ab267814)

To learn more about the advantages of SimpleStep ELISA[®] kits see [here](#).

Please note: All products are "FOR RESEARCH USE ONLY. NOT FOR USE IN DIAGNOSTIC PROCEDURES"

Our Abpromise to you: Quality guaranteed and expert technical support

- Replacement or refund for products not performing as stated on the datasheet
- Valid for 12 months from date of delivery
- Response to your inquiry within 24 hours
- We provide support in Chinese, English, French, German, Japanese and Spanish
- Extensive multi-media technical resources to help you
- We investigate all quality concerns to ensure our products perform to the highest standards

If the product does not perform as described on this datasheet, we will offer a refund or replacement. For full details of the Abpromise, please visit <https://www.abcam.co.jp/abpromise> or contact our technical team.

Terms and conditions

- Guarantee only valid for products bought direct from Abcam or one of our authorized distributors